



# STAUFF Connect

Metric tube connectors, assembly tools  
and accessories

---

Product Catalogue

Version  
10/2025



**Banjo Elbow (Medium-Pressure Version)**

FI-RSWND

182-185


**Whitworth Parallel Pipe Thread (BSPP) /  
External Metallic Sealing Ring**  
FI-RSWND-...-R-DK

182


**Metric Parallel Thread /  
External Metallic Sealing Ring**  
FI-RSWND-...-M-DK

183


**Whitworth Parallel Pipe Thread (BSPP) /  
Retaining Ring with Captive Seal**  
FI-RSWND-...-R-WD

184


**Metric Parallel Thread /  
Retaining Ring with Captive Seal**  
FI-RSWND-...-M-WD

185

**Banjo Elbow (High-Pressure Version)**

FI-RSW

186-189


**Whitworth Parallel Pipe Thread (BSPP) /  
External Metallic Sealing Ring**  
FI-RSW-...-R-DK

186


**Metric Parallel Thread /  
External Metallic Sealing Ring**  
FI-RSW-...-M-DK

187


**Whitworth Parallel Pipe Thread (BSPP) /  
Retaining Ring with Captive Seal**  
FI-RSW-...-R-WD

188


**Metric Parallel Thread /  
Retaining Ring with Captive Seal**  
FI-RSW-...-M-WD

189

**Banjo Tee (High-Pressure Version)**

FI-RST

190-193


**Whitworth Parallel Pipe Thread (BSPP) /  
External Metallic Sealing Ring**  
FI-RST-...-R-DK

190


**Metric Parallel Thread /  
External Metallic Sealing Ring**  
FI-RST-...-M-DK

191

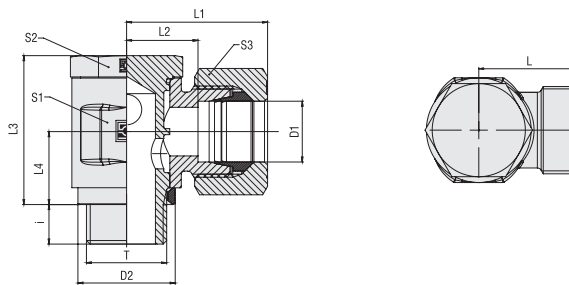

**Whitworth Parallel Pipe Thread (BSPP) /  
Retaining Ring with Captive Seal**  
FI-RST-...-R-WD

192


**Metric Parallel Thread /  
Retaining Ring with Captive Seal**  
FI-RST-...-M-WD

193

**Banjo Elbow (Medium-Pressure Version)**  
**Type FI-RSWND-...-R-DK • Series LL / L / S**



**Whitworth Parallel Pipe Thread (BSPP)**

**External Metallic Sealing Ring**

**Ordering Codes**

**\*FI-RSWND\*-10\*L\*R\*-DK\*-W3\*-MS**

\* Banjo Elbow (Medium-Pressure Version) **FI-RSWND**

\* Outside Tube Diameter D1 (in mm) **-10**

\* Series Extra-Light Series **LL**  
 Light Series **L**  
 Heavy Series **S**

\* Thread Type Whitworth Parallel Pipe Thread (BSPP) **R**

If required, please indicate special sizes, e.g. R1/8!

\* Seal Type External Metallic Sealing Ring **-DK**

\* Material Code Steel, zinc/nickel-plated **-W3**

Please contact STAUFF for alternative materials and surface finishings.

\* Assembling / Kitting Fitting body only **—**

Fitting body supplied with cutting ring and union nut **-MS**

Fitting body supplied with soft-sealing cutting ring and union nut **-MSV**

| Series | Tube OD<br>mm<br>D1 | PB<br>bar | Dimensions<br>mm |      |    |      |    |                 |      |      |    |    |    | Weight<br>kg ca.<br>per 100 | Ordering Codes <sup>3</sup> |
|--------|---------------------|-----------|------------------|------|----|------|----|-----------------|------|------|----|----|----|-----------------------------|-----------------------------|
|        |                     |           | Thread           | T    | D2 | i    | L  | L1 <sup>1</sup> | L2   | L3   | L4 | S1 | S2 |                             |                             |
| LL     | 4                   | 100       | G 1/8            | 13   | 6  | 15,5 | 21 | 11,5            | 21   | 10   | 14 | 14 | 10 | 2,85                        | FI-RSWND-04LLR-DK-W3        |
|        | 6                   | 100       | G 1/8            | 13   | 6  | 15,5 | 21 | 10              | 21   | 10   | 14 | 14 | 12 | 2,85                        | FI-RSWND-06LLR-DK-W3        |
|        | 8                   | 100       | G 1/8            | 13   | 6  | 16,5 | 23 | 11              | 21   | 10   | 14 | 14 | 14 | 2,93                        | FI-RSWND-08LLR-DK-W3        |
| L      | 6                   | 250       | G 1/8            | 13   | 6  | 18,5 | 25 | 11,5            | 21   | 10   | 14 | 14 | 14 | 3,15                        | FI-RSWND-06LR-DK-W3         |
|        | 8                   | 250       | G 1/4            | 17,7 | 10 | 20   | 26 | 13              | 26   | 12   | 17 | 19 | 17 | 5,85                        | FI-RSWND-08LR-DK-W3         |
|        | 10                  | 250       | G 1/4            | 17,7 | 9  | 22   | 30 | 15              | 27   | 13   | 19 | 19 | 19 | 6,95                        | FI-RSWND-10LR-DK-W3         |
|        | 10                  | 160       | G 3/8            | 22   | 9  | 23   | 31 | 16              | 32   | 15   | 22 | 22 | 19 | 10,11                       | FI-RSWND-10LR3/8-DK-W3      |
|        | 12                  | 160       | G 1/4            | 17,7 | 9  | 23   | 30 | 16              | 28   | 13   | 22 | 19 | 22 | 8,23                        | FI-RSWND-12LR1/4-DK-W3      |
|        | 12                  | 250       | G 3/8            | 22   | 9  | 23   | 31 | 16              | 32   | 15   | 22 | 22 | 22 | 6,77                        | FI-RSWND-12LR-DK-W3         |
|        | 12                  | 160       | G 1/2            | 26   | 11 | 26,5 | 34 | 19,5            | 37,5 | 18   | 27 | 27 | 22 | 16,42                       | FI-RSWND-12LR1/2-DK-W3      |
|        | 15                  | 160       | G 1/2            | 26   | 11 | 26,5 | 35 | 19,5            | 37,5 | 18   | 27 | 27 | 27 | 17,36                       | FI-RSWND-15LR-DK-W3         |
|        | 18                  | 160       | G 1/2            | 26   | 11 | 27   | 36 | 19,5            | 44,5 | 21,5 | 30 | 27 | 32 | 21,47                       | FI-RSWND-18LR-DK-W3         |
|        | 22                  | 160       | G 3/4            | 32   | 13 | 32   | 41 | 24,5            | 49   | 24   | 36 | 32 | 36 | 30,63                       | FI-RSWND-22LR-DK-W3         |
| S      | 6                   | 250       | G 1/4            | 17,7 | 10 | 21,5 | 29 | 14,5            | 26   | 12   | 17 | 19 | 17 | 6,23                        | FI-RSWND-06SR-DK-W3         |
|        | 8                   | 250       | G 1/4            | 17,7 | 9  | 23   | 29 | 16              | 27   | 13   | 19 | 19 | 19 | 7,47                        | FI-RSWND-08SR-DK-W3         |
|        | 10                  | 250       | G 3/8            | 22   | 9  | 23,5 | 32 | 16              | 32   | 15   | 22 | 22 | 22 | 10,92                       | FI-RSWND-10SR-DK-W3         |
|        | 12                  | 250       | G 3/8            | 22   | 9  | 26   | 34 | 18,5            | 37   | 18   | 24 | 24 | 24 | 14,87                       | FI-RSWND-12SR-DK-W3         |
|        | 14                  | 160       | G 1/2            | 26   | 11 | 28,5 | 39 | 20,5            | 37,5 | 18   | 27 | 27 | 27 | 18,58                       | FI-RSWND-14SR-DK-W3         |
|        | 16                  | 160       | G 1/2            | 26   | 11 | 30   | 40 | 21,5            | 44,5 | 21,5 | 30 | 27 | 30 | 22,48                       | FI-RSWND-16SR-DK-W3         |
|        | 20                  | 160       | G 3/4            | 32   | 13 | 34   | 45 | 23,5            | 49   | 24   | 36 | 32 | 36 | 32,20                       | FI-RSWND-20SR-DK-W3         |

<sup>1</sup> Approximate dimension in assembled condition.

<sup>2</sup> Weight excluding cutting ring and union nut.

<sup>3</sup> Standard scope of delivery: Fitting body only.

Port acc. to DIN 3852-2 (Form X) / ISO 1179-1

Male threaded studs were designed for female threaded ports in components made of steel. For applications with components made of softer mating materials (e.g. Aluminium), the use of connectors with additionally rolled male threads is recommended.

Please contact STAUFF prior to the assembly for further information.

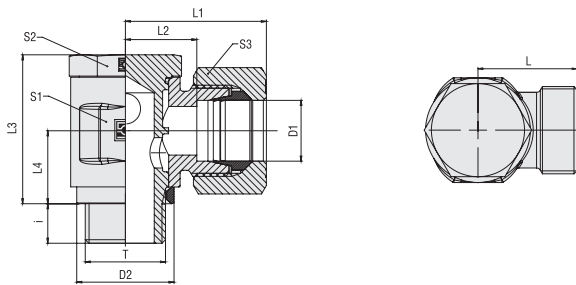
**Connecting Parts**

-  Cutting Ring  
Type **FI-DS** Page 28
-  Soft-Sealing Cutting Ring  
Type **FI-WDDS** Page 29
-  Support Sleeve  
Type **FI-VH** Page 31
-  STAUFF Form EVO Sealing Ring  
Type **FI-FD** Page 32
-  Union Nut  
Type **FI-M** Page 33
-  37° Flared Tube Fitting Set  
Type **FI-AB** Page 37

**Spare Parts / Accessories**

-  External Metallic Sealing Ring  
Type **FI-DKR** Page 244

## Banjo Elbow (Medium-Pressure Version) Type FI-RSWND-...-M-DK ■ Series LL / L / S


**External Metallic Sealing Ring**
**Metric Parallel Thread**

| Series | Tube OD<br>mm | PB<br>bar | Dimensions<br>mm |      |    |      |      |                 |      |      |    |    |    |       |                           | Weight<br>kg ca.<br>per 100 | Ordering Codes <sup>3</sup> |
|--------|---------------|-----------|------------------|------|----|------|------|-----------------|------|------|----|----|----|-------|---------------------------|-----------------------------|-----------------------------|
|        |               |           | Thread           | T    | D2 | i    | L    | L1 <sup>1</sup> | L2   | L3   | L4 | S1 | S2 | S3    |                           |                             |                             |
| LL     | 4             | 100       | M 8 x 1          | 10,8 | 6  | 15,5 | 21   | 11,5            | 17   | 8    | 14 | 12 | 10 | 2,66  | FI-RSWND-04LLM-DK-W3      |                             |                             |
|        | 6             | 100       | M 10 x 1         | 13   | 6  | 15,5 | 21   | 10              | 21   | 10   | 14 | 14 | 12 | 2,86  | FI-RSWND-06LLM-DK-W3      |                             |                             |
|        | 8             | 100       | M 10 x 1         | 13   | 6  | 16,5 | 23   | 11              | 21   | 10   | 14 | 14 | 14 | 2,94  | FI-RSWND-08LLM-DK-W3      |                             |                             |
| L      | 6             | 250       | M 10 x 1         | 13   | 6  | 18,5 | 26   | 11,5            | 21   | 10   | 14 | 14 | 14 | 3,16  | FI-RSWND-06LM-DK-W3       |                             |                             |
|        | 8             | 250       | M 12 x 1,5       | 17,8 | 9  | 20   | 28   | 13              | 25   | 12   | 17 | 17 | 17 | 5,02  | FI-RSWND-08LM-DK-W3       |                             |                             |
|        | 10            | 250       | M 14 x 1,5       | 17,8 | 9  | 22   | 30   | 15              | 27   | 13   | 19 | 19 | 19 | 7,02  | FI-RSWND-10LM-DK-W3       |                             |                             |
|        | 12            | 250       | M 16 x 1,5       | 21,5 | 9  | 23   | 31   | 16              | 32   | 15   | 22 | 22 | 22 | 6,63  | FI-RSWND-12LM-DK-W3       |                             |                             |
|        | 12            | 160       | M 18 x 1,5       | 23   | 9  | 25   | 33   | 18              | 37   | 18,5 | 24 | 24 | 22 | 12,70 | FI-RSWND-12LM18x1,5-DK-W3 |                             |                             |
|        | 15            | 160       | M 18 x 1,5       | 23   | 9  | 25   | 33   | 18              | 37   | 18   | 24 | 24 | 27 | 13,44 | FI-RSWND-15LM-DK-W3       |                             |                             |
|        | 18            | 160       | M 22 x 1,5       | 27   | 11 | 27   | 36   | 19,5            | 44,5 | 21,5 | 30 | 27 | 32 | 22,82 | FI-RSWND-18LM-DK-W3       |                             |                             |
|        | 22            | 160       | M 26 x 1,5       | 31   | 13 | 32   | 41   | 24,5            | 49   | 24   | 36 | 32 | 36 | 30,46 | FI-RSWND-22LM-DK-W3       |                             |                             |
|        | 22            | 250       | M 12 x 1,5       | 17,8 | 9  | 21,5 | 29   | 14,5            | 25   | 12   | 17 | 17 | 17 | 5,39  | FI-RSWND-06SM-DK-W3       |                             |                             |
| S      | 8             | 250       | M 14 x 1,5       | 17,8 | 9  | 23   | 31   | 16              | 27   | 13   | 19 | 19 | 19 | 7,54  | FI-RSWND-08SM-DK-W3       |                             |                             |
|        | 10            | 250       | M 16 x 1,5       | 21,5 | 9  | 23,5 | 32,5 | 16              | 32   | 15   | 22 | 22 | 22 | 10,78 | FI-RSWND-10SM-DK-W3       |                             |                             |
|        | 12            | 250       | M 18 x 1,5       | 23   | 9  | 25   | 34   | 17,5            | 37   | 18   | 24 | 24 | 24 | 13,70 | FI-RSWND-12SM-DK-W3       |                             |                             |
|        | 14            | 160       | M 20 x 1,5       | 26   | 11 | 28,5 | 38,5 | 20,5            | 37   | 18   | 27 | 27 | 27 | 17,94 | FI-RSWND-14SM-DK-W3       |                             |                             |
|        | 16            | 160       | M 22 x 1,5       | 27   | 11 | 30   | 40   | 21,5            | 44,5 | 21,5 | 30 | 27 | 30 | 23,83 | FI-RSWND-16SM-DK-W3       |                             |                             |
|        | 20            | 160       | M 27 x 2         | 32   | 13 | 34   | 45   | 23,5            | 49   | 24   | 36 | 32 | 36 | 33,34 | FI-RSWND-20SM-DK-W3       |                             |                             |

<sup>1</sup> Approximate dimension in assembled condition.

<sup>2</sup> Weight excluding cutting ring and union nut.

<sup>3</sup> Standard scope of delivery: Fitting body only.

Port acc. to DIN 3852-1 (Form X) / ISO 9974-1

Male threaded studs were designed for female threaded ports in components made of steel. For applications with components made of softer mating materials (e.g. Aluminium), the use of connectors with additionally rolled male threads is recommended.

Please contact STAUFF prior to the assembly for further information.

**Ordering Codes**
**\*FI-RSWND\*-10\*L\*M\*-DK\*-W3\*-MS**
**\* Banjo Elbow (Medium-Pressure Version) FI-RSWND**
**\* Outside Tube Diameter D1 (in mm) -10**
**\* Series** Extra-Light Series **LL**  
 Light Series **L**  
 Heavy Series **S**
**\* Thread Type** Metric Parallel Thread **M**

If required, please indicate special sizes, e.g. M12x1.5!

**\* Seal Type** External Metallic Sealing Ring **-DK**
**\* Material Code** Steel, zinc/nickel-plated **-W3**

Please contact STAUFF for alternative materials and surface finishings.

**\* Assembling / Kitting** Fitting body only **—**

 Fitting body supplied with cutting ring and union nut **-MS**

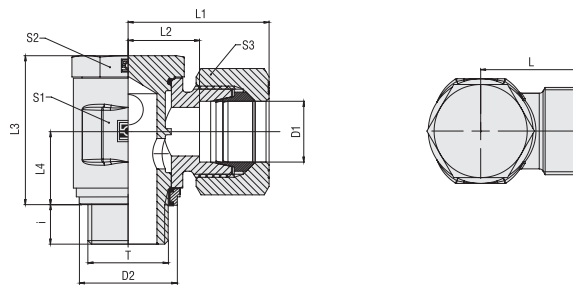
 Fitting body supplied with soft-sealing cutting ring and union nut **-MSV**
**Connecting Parts**

|  |   |         |
|--|---|---------|
|  | Cutting Ring<br>Type <b>FI-DS</b>                 | Page 28 |
|  | Soft-Sealing Cutting Ring<br>Type <b>FI-WDDS</b>  | Page 29 |
|  | Support Sleeve<br>Type <b>FI-VH</b>               | Page 31 |
|  | STAUFF Form EVO Sealing Ring<br>Type <b>FI-FD</b> | Page 32 |
|  | Union Nut<br>Type <b>FI-M</b>                     | Page 33 |
|  | 37° Flared Tube Fitting Set<br>Type <b>FI-AB</b>  | Page 37 |

**Spare Parts / Accessories**

|  |  |          |
|--|--|----------|
|  | External Metallic Sealing Ring<br>Type <b>FI-DKR</b> | Page 244 |
|--|--|----------|

**Banjo Elbow (Medium-Pressure Version)**  
**Type FI-RSWND-...-R-WD ■ Series LL / L / S**



**Whitworth Parallel Pipe Thread (BSPP)**

**Retaining Ring with Captive Seal**

**Ordering Codes**

- \*FI-RSWND\*-10\*L\*R\*-WD\*-B\*-W3\*-MS**
- \* Banjo Elbow (Medium-Pressure Version) FI-RSWND**
- \* Outside Tube Diameter D1 (in mm) -10**
- \* Series**
  - Extra-Light Series **LL**
  - Light Series **L**
  - Heavy Series **S**
- \* Thread Type**
  - Whitworth Parallel Pipe Thread (BSPP) **R**
- If required, please indicate special sizes, e.g. R1/8!
- \* Seal Type** Retaining Ring with Captive Seal **-WD**
- \* Seal Material**
  - NBR (Buna-N®) **-B**
  - FKM (Viton®) **-V**
- \* Material Code** Steel, zinc/nickel-plated **-W3**
- Please contact STAUFF for alternative materials and surface finishings.
- \* Assembling / Kitting**
  - Fitting body only **—**
  - Fitting body supplied with cutting ring and union nut **-MS**
  - Fitting body supplied with soft-sealing cutting ring and union nut **-MSV**

| Series | Tube OD<br>mm<br>D1 | PB<br>bar | Dimensions<br>mm |      |     |      |    |                 |      |      |    |    |    | Weight<br>kg ca.<br>per 100 | Ordering Codes <sup>3</sup> |
|--------|---------------------|-----------|------------------|------|-----|------|----|-----------------|------|------|----|----|----|-----------------------------|-----------------------------|
|        |                     |           | Thread           | T    | D2  | i    | L  | L1 <sup>1</sup> | L2   | L3   | L4 | S1 | S2 |                             |                             |
| LL     | 6                   | 100       | G 1/8            | 14,9 | 6   | 15,5 | 24 | 10              | 21   | 10   | 14 | 14 | 14 | 2,70                        | FI-RSWND-06LLR-WD-B-W3      |
|        | 8                   | 100       | G 1/8            | 14,9 | 6   | 16,5 | 26 | 11              | 21   | 10   | 14 | 14 | 14 | 2,80                        | FI-RSWND-08LLR-WD-B-W3      |
| L      | 6                   | 250       | G 1/8            | 14,9 | 6   | 18,5 | 25 | 11,5            | 21   | 10   | 14 | 14 | 14 | 3,07                        | FI-RSWND-06LR-WD-B-W3       |
|        | 8                   | 250       | G 1/4            | 18,8 | 10  | 20   | 26 | 13              | 26   | 12   | 17 | 19 | 17 | 5,97                        | FI-RSWND-08LR-WD-B-W3       |
|        | 10                  | 250       | G 1/4            | 18,8 | 9   | 22   | 30 | 15              | 27   | 13   | 19 | 19 | 19 | 7,60                        | FI-RSWND-10LR-WD-B-W3       |
|        | 10                  | 250       | G 3/8            | 22,8 | 8   | 23   | 31 | 16              | 33   | 15   | 22 | 22 | 19 | 9,95                        | FI-RSWND-10LR3/8-WD-B-W3    |
|        | 12                  | 250       | G 1/4            | 18,8 | 9,5 | 16   | 30 | 16              | 28,2 | 13   | 22 | 19 | 22 | 8,27                        | FI-RSWND-12LR1/4-WD-B-W3    |
|        | 12                  | 250       | G 3/8            | 22,8 | 9   | 23   | 31 | 16              | 32   | 15   | 22 | 22 | 22 | 10,45                       | FI-RSWND-12LR-WD-B-W3       |
|        | 15                  | 160       | G 1/2            | 27,9 | 11  | 26,5 | 35 | 19,5            | 37,5 | 18   | 27 | 27 | 27 | 18,00                       | FI-RSWND-15LR-WD-B-W3       |
|        | 18                  | 250       | G 1/2            | 27,9 | 11  | 27   | 36 | 19,5            | 44,5 | 21,5 | 30 | 27 | 32 | 22,31                       | FI-RSWND-18LR-WD-B-W3       |
|        | 22                  | 160       | G 3/4            | 32,9 | 13  | 32   | 41 | 24,5            | 49   | 24   | 36 | 32 | 36 | 31,05                       | FI-RSWND-22LR-WD-B-W3       |
|        | 22                  | 250       | G 1/4            | 18,8 | 10  | 21,5 | 29 | 14,5            | 26   | 12   | 17 | 19 | 17 | 6,34                        | FI-RSWND-06SR-WD-B-W3       |
| S      | 8                   | 250       | G 1/4            | 18,8 | 9   | 23   | 29 | 16              | 27   | 13   | 19 | 19 | 19 | 7,60                        | FI-RSWND-08SR-WD-B-W3       |
|        | 10                  | 250       | G 3/8            | 22,8 | 9   | 23,5 | 32 | 16              | 32   | 15   | 22 | 22 | 22 | 10,89                       | FI-RSWND-10SR-WD-B-W3       |
|        | 12                  | 250       | G 3/8            | 22,8 | 9   | 26   | 34 | 18,5            | 37   | 18   | 24 | 24 | 24 | 14,51                       | FI-RSWND-12SR-WD-B-W3       |
|        | 14                  | 160       | G 1/2            | 27,9 | 11  | 28,5 | 39 | 20,5            | 37,5 | 18   | 27 | 27 | 27 | 18,77                       | FI-RSWND-14SR-WD-B-W3       |
|        | 16                  | 160       | G 1/2            | 27,9 | 11  | 30   | 40 | 21,5            | 44,5 | 21,5 | 30 | 27 | 30 | 23,32                       | FI-RSWND-16SR-WD-B-W3       |
|        | 20                  | 160       | G 3/4            | 32,9 | 13  | 34   | 45 | 23,5            | 49   | 24   | 36 | 32 | 36 | 32,63                       | FI-RSWND-20SR-WD-B-W3       |

<sup>1</sup> Approximate dimension in assembled condition.

<sup>2</sup> Weight excluding cutting ring and union nut.

<sup>3</sup> Standard scope of delivery: Fitting body only.

Standard seal material is NBR (Buna-N®).

Port acc. to DIN 3852-2 (Form X) / ISO 1179-1



Male threaded studs were designed for female threaded ports in components made of steel. For applications with components made of softer mating materials (e.g. Aluminium), the use of connectors with additionally rolled male threads is recommended.

Please contact STAUFF prior to the assembly for further information.

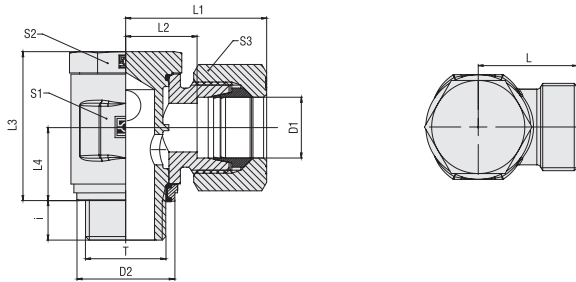
**Connecting Parts**

-  Cutting Ring  
Type **FI-DS** Page 28
-  Soft-Sealing Cutting Ring  
Type **FI-WDDS** Page 29
-  Support Sleeve  
Type **FI-VH** Page 31
-  STAUFF Form EVO Sealing Ring  
Type **FI-FD** Page 32
-  Union Nut  
Type **FI-M** Page 33
-  37° Flared Tube Fitting Set  
Type **FI-AB** Page 37

**Spare Parts / Accessories**

-  Retaining Ring with Captive Seal  
Type **FI-DIR** Page 245
-  O-Ring  
Type **O-RING** Page 239

## Banjo Elbow (Medium-Pressure Version) Type FI-RSWND-...-M-WD ■ Series LL / L / S


**Retaining Ring with Captive Seal**
**Metric Parallel Thread**

| Series | Tube OD<br>mm | PB<br>bar | Dimensions<br>mm |      |    |      |      |                 |      |      |    |    |    |       |                             | Weight<br>kg ca.<br>per 100 | Ordering Codes <sup>3</sup> |
|--------|---------------|-----------|------------------|------|----|------|------|-----------------|------|------|----|----|----|-------|-----------------------------|-----------------------------|-----------------------------|
|        |               |           | Thread           | T    | D2 | i    | L    | L1 <sup>1</sup> | L2   | L3   | L4 | S1 | S2 | S3    |                             |                             |                             |
| LL     | 6             | 100       | M 10 x 1         | 14,9 | 6  | 15,5 | 24   | 10              | 21   | 10   | 14 | 14 | 14 | 2,70  | FI-RSWND-06LLM-WD-B-W3      |                             |                             |
|        | 8             | 100       | M 10 x 1         | 14,9 | 6  | 16,5 | 26   | 11              | 21   | 10   | 14 | 14 | 14 | 2,80  | FI-RSWND-08LLM-WD-B-W3      |                             |                             |
| L      | 6             | 250       | M 10 x 1         | 14,9 | 6  | 18,5 | 26   | 11,5            | 21   | 10   | 14 | 14 | 14 | 3,10  | FI-RSWND-06LM-WD-B-W3       |                             |                             |
|        | 8             | 250       | M 12 x 1,5       | 17,8 | 9  | 20   | 28   | 13              | 25   | 12   | 17 | 17 | 17 | 5,20  | FI-RSWND-08LM-WD-B-W3       |                             |                             |
|        | 10            | 250       | M 14 x 1,5       | 19,9 | 9  | 22   | 30   | 15              | 27   | 13   | 19 | 19 | 19 | 7,31  | FI-RSWND-10LM-WD-B-W3       |                             |                             |
|        | 12            | 250       | M 16 x 1,5       | 22,8 | 9  | 23   | 31   | 16              | 32   | 15   | 22 | 22 | 22 | 10,27 | FI-RSWND-12LM-WD-B-W3       |                             |                             |
|        | 12            | 250       | M 18 x 1,5       | 24,9 | 9  | 25   | 33   | 18              | 37   | 19   | 24 | 24 | 24 | 12,66 | FI-RSWND-12LM18x1.5-WD-B-W3 |                             |                             |
|        | 15            | 250       | M 18 x 1,5       | 24,9 | 9  | 25   | 33   | 18              | 37   | 18   | 24 | 24 | 27 | 13,86 | FI-RSWND-15LM-WD-B-W3       |                             |                             |
|        | 18            | 250       | M 22 x 1,5       | 27,9 | 11 | 27   | 36   | 19,5            | 44,5 | 21,5 | 30 | 27 | 32 | 22,65 | FI-RSWND-18LM-WD-B-W3       |                             |                             |
| S      | 22            | 160       | M 26 x 1,5       | 32,5 | 13 | 32   | 41   | 24,5            | 49   | 24   | 36 | 32 | 36 | 30,84 | FI-RSWND-22LM-WD-B-W3       |                             |                             |
|        | 6             | 250       | M 12 x 1,5       | 17,8 | 9  | 21,5 | 29   | 14,5            | 25   | 12   | 17 | 17 | 17 | 5,57  | FI-RSWND-06SM-WD-B-W3       |                             |                             |
|        | 8             | 250       | M 14 x 1,5       | 19,9 | 9  | 23   | 31   | 16              | 27   | 13   | 19 | 19 | 19 | 7,82  | FI-RSWND-08SM-WD-B-W3       |                             |                             |
|        | 10            | 250       | M 16 x 1,5       | 22,8 | 9  | 23,5 | 32,5 | 16              | 32   | 15   | 22 | 22 | 22 | 10,71 | FI-RSWND-10SM-WD-B-W3       |                             |                             |
|        | 12            | 250       | M 18 x 1,5       | 24,9 | 9  | 25   | 34   | 17,5            | 37   | 18   | 24 | 24 | 24 | 14,12 | FI-RSWND-12SM-WD-B-W3       |                             |                             |
|        | 16            | 160       | M 22 x 1,5       | 27,9 | 11 | 30   | 40   | 21,5            | 44,5 | 21,5 | 30 | 27 | 30 | 23,66 | FI-RSWND-16SM-WD-B-W3       |                             |                             |
|        | 20            | 160       | M 27 x 2         | 32,9 | 13 | 34   | 45   | 23,5            | 49   | 24   | 36 | 32 | 36 | 33,01 | FI-RSWND-20SM-WD-B-W3       |                             |                             |

<sup>1</sup> Approximate dimension in assembled condition.

<sup>2</sup> Weight excluding cutting ring and union nut.

<sup>3</sup> Standard scope of delivery: Fitting body only.

Standard seal material is NBR (Buna-N®).

Port acc. to DIN 3852-1 (Form X) / ISO 9974-1

Male threaded studs were designed for female threaded ports in components made of steel. For applications with components made of softer mating materials (e.g. Aluminium), the use of connectors with additionally rolled male threads is recommended.

Please contact STAUFF prior to the assembly for further information.

**Ordering Codes**
**\*FI-RSWND\*-10\*L\*M\*-WD\*-B\*-W3\*-MS**

 \* Banjo Elbow (Medium-Pressure Version) **FI-RSWND**

 \* Outside Tube Diameter D1 (in mm) **-10**

 \* Series **LL**  
 Extra-Light Series  
**L**  
 Light Series  
**S**  
 Heavy Series

 \* Thread Type **M**  
 Metric Parallel Thread

If required, please indicate special sizes, e.g. M12x1.5!

 \* Seal Type **-WD**  
 Retaining Ring with Captive Seal

 \* Seal Material **-B**  
 NBR (Buna-N®)  
**-V**  
 FKM (Viton®)

 \* Material Code **-W3**  
 Steel, zinc/nickel-plated

Please contact STAUFF for alternative materials and surface finishings.

 \* Assembling / Kitting **—**  
 Fitting body only

**-MS**  
 Fitting body supplied with cutting ring and union nut

**-MSV**  
 Fitting body supplied with soft-sealing cutting ring and union nut

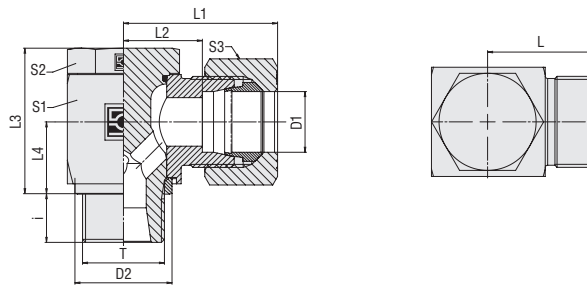
**Connecting Parts**

|  |   |         |
|--|---|---------|
|  | Cutting Ring<br>Type <b>FI-DS</b>                 | Page 28 |
|  | Soft-Sealing Cutting Ring<br>Type <b>FI-WDDS</b>  | Page 29 |
|  | Support Sleeve<br>Type <b>FI-VH</b>               | Page 31 |
|  | STAUFF Form EVO Sealing Ring<br>Type <b>FI-FD</b> | Page 32 |
|  | Union Nut<br>Type <b>FI-M</b>                     | Page 33 |
|  | 37° Flared Tube Fitting Set<br>Type <b>FI-AB</b>  | Page 37 |

**Spare Parts / Accessories**

|  |  |          |
|--|--|----------|
|  | Retaining Ring with Captive Seal<br>Type <b>FI-DIR</b> | Page 245 |
|  | O-Ring<br>Type <b>O-RING</b>                           | Page 239 |

**Banjo Elbow (High-Pressure Version)**  
Type FI-RSW-...-R-DK ■ Series L / S



**Whitworth Parallel Pipe Thread (BSPP)**

**External Metallic Sealing Ring**

**Ordering Codes**

**\*FI-RSW\*-10\*L\*R\*-DK\*-B\*-W3\*-MS**

\* Banjo Elbow (High-Pressure Version) **FI-RSW**

\* Outside Tube Diameter D1 (in mm) **-10**

\* Series Light Series **L**  
Heavy Series **S**

\* Thread Type Whitworth Parallel Pipe Thread (BSPP) **R**

If required, please indicate special sizes, e.g. R1/8!

\* Seal Type External Metallic Sealing Ring **-DK**

\* Seal Material NBR (Buna-N®) **-B**  
FKM (Viton®) **-V**

\* Material Code Steel, zinc/nickel-plated **-W3**

Please contact STAUFF for alternative materials and surface finishings.

\* Assembling / Kitting Fitting body only **—**

Fitting body supplied with cutting ring and union nut **-MS**

Fitting body supplied with soft-sealing cutting ring and union nut **-MSV**

| Series | Tube OD<br>mm<br>D1 | PB<br>bar | Dimensions<br>mm |      |    |      |      |                 |      |      |    |    |    | Weight<br>kg ca.<br>per 100 | Ordering Codes <sup>3</sup> |
|--------|---------------------|-----------|------------------|------|----|------|------|-----------------|------|------|----|----|----|-----------------------------|-----------------------------|
|        |                     |           | Thread           | T    | D2 | i    | L    | L1 <sup>1</sup> | L2   | L3   | L4 | S1 | S2 |                             |                             |
| L      | 6                   | 500       | G 1/8            | 13   | 8  | 20   | 28   | 13              | 21   | 10,5 | 14 | 14 | 14 | 3,61                        | FI-RSW-06LR-DK-B-W3         |
|        | 6                   | 500       | G 1/4            | 17,7 | 10 | 22   | 30,5 | 15              | 27,5 | 13,3 | 19 | 19 | 14 | 7,86                        | FI-RSW-06LR1/4-DK-B-W3      |
|        | 8                   | 500       | G 1/4            | 17,7 | 10 | 21   | 29   | 14              | 27   | 13,5 | 19 | 19 | 17 | 7,93                        | FI-RSW-08LR-DK-B-W3         |
|        | 10                  | 500       | G 1/4            | 17,7 | 10 | 22   | 30   | 15              | 27   | 13,5 | 19 | 19 | 19 | 8,15                        | FI-RSW-10LR-DK-B-W3         |
|        | 12                  | 400       | G 1/4            | 17,7 | 10 | 22   | 35   | 15              | 30,5 | 15,3 | 27 | 22 | 19 | 9,92                        | FI-RSW-12LR1/4-DK-B-W3      |
|        | 12                  | 400       | G 3/8            | 22   | 12 | 24,5 | 32,5 | 17,5            | 32,5 | 16   | 24 | 22 | 22 | 13,75                       | FI-RSW-12LR-DK-B-W3         |
|        | 15                  | 400       | G 1/2            | 26   | 14 | 27   | 35   | 21              | 43   | 19,5 | 30 | 27 | 27 | 25,80                       | FI-RSW-15LR-DK-B-W3         |
|        | 18                  | 400       | G 1/2            | 26   | 12 | 28   | 37   | 20,5            | 43   | 21,5 | 30 | 27 | 32 | 26,56                       | FI-RSW-18LR-DK-B-W3         |
|        | 22                  | 250       | G 3/4            | 32   | 16 | 34,5 | 43,5 | 27              | 48   | 24   | 36 | 32 | 36 | 43,25                       | FI-RSW-22LR-DK-B-W3         |
|        | 28                  | 250       | G 1              | 39   | 18 | 39   | 48   | 31,5            | 59   | 30,5 | 46 | 41 | 41 | 83,60                       | FI-RSW-28LR-DK-B-W3         |
|        | 35                  | 250       | G 1 1/4          | 49   | 20 | 46   | 57   | 35,5            | 70   | 35,5 | 55 | 50 | 50 | 140,80                      | FI-RSW-35LR-DK-B-W3         |
|        | 42                  | 250       | G 1 1/2          | 55   | 22 | 51   | 63   | 40              | 80   | 40,5 | 65 | 55 | 60 | 211,80                      | FI-RSW-42LR-DK-B-W3         |
| S      | 6                   | 500       | G 1/4            | 17,8 | 10 | 23   | 31   | 16              | 27   | 13,5 | 19 | 19 | 17 | 8,36                        | FI-RSW-06SR-DK-B-W3         |
|        | 8                   | 500       | G 1/4            | 17,8 | 10 | 23   | 31   | 16              | 27   | 13,5 | 19 | 19 | 19 | 8,62                        | FI-RSW-08SR-DK-B-W3         |
|        | 10                  | 500       | G 3/8            | 22   | 10 | 25,5 | 34,5 | 18              | 32,5 | 16   | 24 | 22 | 22 | 14,57                       | FI-RSW-10SR-DK-B-W3         |
|        | 12                  | 400       | G 3/8            | 22   | 10 | 25,5 | 36   | 18              | 32,5 | 16   | 24 | 22 | 24 | 14,59                       | FI-RSW-12SR-DK-B-W3         |
|        | 14                  | 400       | G 1/2            | 26   | 14 | 30   | 40   | 22              | 41   | 19,5 | 30 | 27 | 27 | 26,55                       | FI-RSW-14SR-DK-B-W3         |
|        | 16                  | 400       | G 1/2            | 26   | 12 | 30   | 40   | 21,5            | 43   | 21,5 | 30 | 27 | 30 | 26,86                       | FI-RSW-16SR-DK-B-W3         |
|        | 20                  | 315       | G 3/4            | 32   | 16 | 36,5 | 47,5 | 26              | 48   | 24   | 36 | 32 | 36 | 44,88                       | FI-RSW-20SR-DK-B-W3         |
|        | 25                  | 250       | G 1              | 39   | 18 | 43   | 55   | 31              | 59   | 30,5 | 46 | 41 | 46 | 87,00                       | FI-RSW-25SR-DK-B-W3         |
|        | 30                  | 250       | G 1 1/4          | 49   | 20 | 50   | 63   | 36,5            | 70   | 35,5 | 55 | 50 | 50 | 145,00                      | FI-RSW-30SR-DK-B-W3         |
|        | 38                  | 250       | G 1 1/2          | 55   | 22 | 57   | 72   | 41              | 80   | 40,5 | 65 | 55 | 60 | 223,40                      | FI-RSW-38SR-DK-B-W3         |

<sup>1</sup> Approximate dimension in assembled condition.

<sup>2</sup> Weight excluding cutting ring and union nut.

<sup>3</sup> Standard scope of delivery: Fitting body only.

Port acc. to DIN 3852-2 (Form X) / ISO 1179-1

Male threaded studs were designed for female threaded ports in components made of steel. For applications with components made of softer mating materials (e.g. Aluminium), the use of connectors with additionally rolled male threads is recommended.

Please contact STAUFF prior to the assembly for further information.

Standard seal material is NBR (Buna-N®).



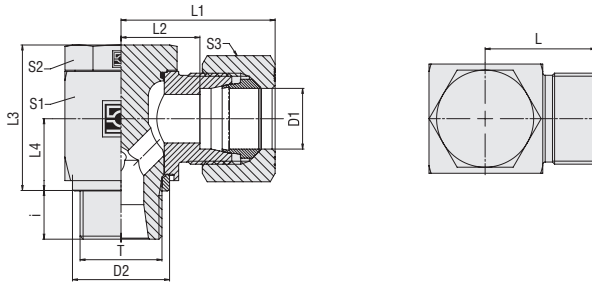
For use with aggressive media and/or at elevated temperatures, please remove the o-ring from the groove located on the banjo bolt prior to installation.

**Connecting Parts**

-  Cutting Ring  
Type **FI-DS** Page 28
-  Soft-Sealing Cutting Ring  
Type **FI-WDDS** Page 29
-  Support Sleeve  
Type **FI-VH** Page 31
-  STAUFF Form EVO Sealing Ring  
Type **FI-FD** Page 32
-  Union Nut  
Type **FI-M** Page 33
-  37° Flared Tube Fitting Set  
Type **FI-AB** Page 37

**Spare Parts / Accessories**

-  External Metallic Sealing Ring  
Type **FI-DKR** Page 245
-  O-Ring  
Type **O-RING** Page 239

**Banjo Elbow (High-Pressure Version)  
Type FI-RSW-...-M-DK ■ Series L / S**

**External Metallic Sealing Ring**
**Metric Parallel Thread**

| Series | Tube OD<br>mm | PB<br>bar | Dimensions<br>mm |         |      |      |      |                 |      |      |      |    |    | Weight<br>kg ca.<br>per 100 | Ordering Codes <sup>3</sup> |                     |
|--------|---------------|-----------|------------------|---------|------|------|------|-----------------|------|------|------|----|----|-----------------------------|-----------------------------|---------------------|
|        |               |           | Thread           | T       | D2   | i    | L    | L1 <sup>1</sup> | L2   | L3   | L4   | S1 | S2 |                             |                             | S3                  |
| L      | 6             | 500       | M10x1            | 13      | 8    | 20   | 28   | 13              | 21   | 10   | 14   | 14 | 14 | 3,66                        | FI-RSW-06LM-DK-B-W3         |                     |
|        | 8             | 500       | M12x1,5          | 17,7    | 10   | 21   | 29   | 14              | 27   | 13,5 | 19   | 19 | 17 | 7,70                        | FI-RSW-08LM-DK-B-W3         |                     |
|        | 10            | 500       | M14x1,5          | 17,7    | 10   | 22   | 30   | 15              | 27   | 13,5 | 19   | 19 | 19 | 8,21                        | FI-RSW-10LM-DK-B-W3         |                     |
|        | 12            | 400       | M16x1,5          | 21      | 10   | 24,5 | 32,5 | 17,5            | 32,5 | 16   | 24   | 22 | 22 | 13,72                       | FI-RSW-12LM-DK-B-W3         |                     |
|        | 12            | 315       | M18x1,5          | 23      | 10   | 22   | 35   | 15              | 30,5 | 15,3 | 27   | 22 | 19 | 18,48                       | FI-RSW-12LM18x1,5-DK-B-W3   |                     |
|        | 15            | 400       | M18x1,5          | 23      | 10   | 27   | 35   | 20              | 37   | 18,5 | 27   | 24 | 27 | 17,73                       | FI-RSW-15LM-DK-B-W3         |                     |
|        | 18            | 400       | M22x1,5          | 27      | 12   | 28   | 37   | 20,5            | 43   | 21,5 | 30   | 27 | 32 | 27,01                       | FI-RSW-18LM-DK-B-W3         |                     |
|        | 22            | 250       | M26x1,5          | 31      | 16   | 34,5 | 43,5 | 27              | 48   | 24   | 36   | 32 | 36 | 42,27                       | FI-RSW-22LM-DK-B-W3         |                     |
|        | 28            | 250       | M33x2            | 39      | 18   | 39   | 48   | 31,5            | 59   | 30,5 | 46   | 41 | 41 | 83,30                       | FI-RSW-28LM-DK-B-W3         |                     |
|        | 35            | 250       | M42x2            | 49      | 20   | 46   | 57   | 35,5            | 70   | 35,5 | 55   | 50 | 50 | 146,51                      | FI-RSW-35LM-DK-B-W3         |                     |
|        | 42            | 250       | M48x2            | 55      | 22   | 51   | 63   | 40              | 80   | 40,5 | 65   | 55 | 60 | 226,97                      | FI-RSW-42LM-DK-B-W3         |                     |
|        | S             | 6         | 500              | M12x1,5 | 17,7 | 10   | 23   | 31              | 16   | 27   | 13,5 | 19 | 19 | 17                          | 10,09                       | FI-RSW-06SM-DK-B-W3 |
|        |               | 8         | 500              | M14x1,5 | 17,7 | 10   | 23   | 31              | 16   | 27   | 13,5 | 19 | 19 | 19                          | 8,69                        | FI-RSW-08SM-DK-B-W3 |
|        |               | 10        | 500              | M16x1,5 | 21   | 10   | 25,5 | 34,5            | 18   | 32,5 | 16   | 24 | 22 | 22                          | 14,46                       | FI-RSW-10SM-DK-B-W3 |
| 12     |               | 400       | M18x1,5          | 23      | 10   | 27   | 36   | 19,5            | 37   | 18,5 | 27   | 24 | 24 | 19,33                       | FI-RSW-12SM-DK-B-W3         |                     |
| 14     |               | 400       | M20x1,5          | 25      | 12   | 30   | 40   | 22              | 41   | 19,5 | 30   | 27 | 27 | 28,76                       | FI-RSW-14SM-DK-B-W3         |                     |
| 16     |               | 400       | M22x1,5          | 27      | 12   | 30   | 40   | 21,5            | 43   | 21,5 | 30   | 27 | 30 | 27,40                       | FI-RSW-16SM-DK-B-W3         |                     |
| 20     |               | 315       | M27x2            | 32      | 16   | 36,5 | 47,5 | 26              | 48   | 24   | 36   | 32 | 36 | 45,17                       | FI-RSW-20SM-DK-B-W3         |                     |
| 25     |               | 250       | M33x2            | 39      | 18   | 43   | 55   | 31              | 59   | 30,5 | 46   | 41 | 46 | 30,63                       | FI-RSW-25SM-DK-B-W3         |                     |
| 30     |               | 250       | M42x2            | 49      | 20   | 50   | 63   | 36,5            | 70   | 35,5 | 55   | 50 | 50 | 149,83                      | FI-RSW-30SM-DK-B-W3         |                     |
| 38     |               | 250       | M48x2            | 55      | 22   | 57   | 72   | 41              | 80   | 40,5 | 65   | 55 | 60 | 236,07                      | FI-RSW-38SM-DK-B-W3         |                     |

<sup>1</sup> Approximate dimension in assembled condition.

<sup>2</sup> Weight excluding cutting ring and union nut.

<sup>3</sup> Standard scope of delivery: Fitting body only.

Standard seal material is NBR (Buna-N®).



For use with aggressive media and/or at elevated temperatures, please remove the o-ring from the groove located on the banjo bolt prior to installation.

Port acc. to DIN 3852-1 (Form X) / ISO 9974-1

Male threaded studs were designed for female threaded ports in components made of steel. For applications with components made of softer mating materials (e.g. Aluminium), the use of connectors with additionally rolled male threads is recommended.

Please contact STAUFF prior to the assembly for further information.

**Ordering Codes**
**\*FI-RSW\*-10\*L\*M\*-DK\*-B\*-W3\*-MS**

 \* Banjo Elbow (High-Pressure Version) **FI-RSW**

 \* Outside Tube Diameter D1 (in mm) **-10**

 \* Series Light Series **L**  
Heavy Series **S**

 \* Thread Type Metric Parallel Thread **M**

If required, please indicate special sizes, e.g. M12x1.5!

 \* Seal Type External Metallic Sealing Ring **-DK**

 \* Seal Material NBR (Buna-N®) **-B**  
FKM (Viton®) **-V**

 \* Material Code Steel, zinc/nickel-plated **-W3**

Please contact STAUFF for alternative materials and surface finishings.

 \* Assembling / Kitting Fitting body only **—**

 Fitting body supplied with cutting ring and union nut **-MS**

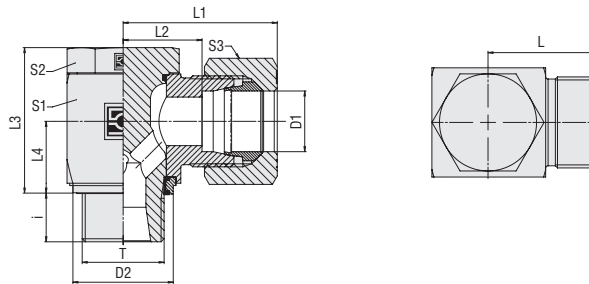
 Fitting body supplied with soft-sealing cutting ring and union nut **-MSV**
**Connecting Parts**

|  |   |         |
|--|---|---------|
|  | Cutting Ring<br>Type <b>FI-DS</b>                 | Page 28 |
|  | Soft-Sealing Cutting Ring<br>Type <b>FI-WDDS</b>  | Page 29 |
|  | Support Sleeve<br>Type <b>FI-VH</b>               | Page 31 |
|  | STAUFF Form EVO Sealing Ring<br>Type <b>FI-FD</b> | Page 32 |
|  | Union Nut<br>Type <b>FI-M</b>                     | Page 33 |
|  | 37° Flared Tube Fitting Set<br>Type <b>FI-AB</b>  | Page 37 |

**Spare Parts / Accessories**

|  |  |          |
|--|--|----------|
|  | External Metallic Sealing Ring<br>Type <b>FI-DKR</b> | Page 245 |
|  | O-Ring<br>Type <b>O-RING</b>                         | Page 239 |

**Banjo Elbow (High-Pressure Version)**  
**Type FI-RSW-...-R-WD ■ Series L / S**



Whitworth Parallel Pipe Thread (BSPP)

Retaining Ring with Captive Seal

**Ordering Codes**

**\*FI-RSW\*-10\*L\*R\*-WD\*-B\*-W3\*-MS**

\* Banjo Elbow (High-Pressure Version) **FI-RSW**

\* Outside Tube Diameter D1 (in mm) **-10**

\* Series Light Series **L**  
 Heavy Series **S**

\* Thread Type Whitworth Parallel Pipe Thread (BSPP) **R**

If required, please indicate special sizes, e.g. R1/8!

\* Seal Type Retaining Ring with Captive Seal **-WD**

\* Seal Material NBR (Buna-N®) **-B**  
 FKM (Viton®) **-V**

\* Material Code Steel, zinc/nickel-plated **-W3**

Please contact STAUFF for alternative materials and surface finishings.

\* Assembling / Kitting Fitting body only **—**

Fitting body supplied with cutting ring and union nut **-MS**

Fitting body supplied with soft-sealing cutting ring and union nut **-MSV**

| Series | Tube OD<br>mm<br>D1 | PB<br>bar | Dimensions<br>mm |      |    |      |      |                 |      |      |    |    |    | Weight<br>kg ca.<br>per 100 | Ordering Codes <sup>3</sup> |
|--------|---------------------|-----------|------------------|------|----|------|------|-----------------|------|------|----|----|----|-----------------------------|-----------------------------|
|        |                     |           | Thread           | T    | D2 | i    | L    | L1 <sup>1</sup> | L2   | L3   | L4 | S1 | S2 |                             |                             |
| L      | 6                   | 500       | G 1/8            | 14,9 | 8  | 20   | 28   | 13              | 21   | 10,5 | 14 | 14 | 14 | 3,65                        | FI-RSW-06LR-WD-B-W3         |
|        | 6                   | 500       | G 1/4            | 18,8 | 10 | 22   | 28   | 15              | 27,7 | 13,5 | 19 | 19 | 14 | 7,88                        | FI-RSW-06LR1/4-WD-B-W3      |
|        | 8                   | 500       | G 1/4            | 18,8 | 10 | 21   | 29   | 14              | 27   | 13,5 | 19 | 19 | 17 | 7,92                        | FI-RSW-08LR-WD-B-W3         |
|        | 10                  | 500       | G 1/4            | 18,8 | 10 | 22   | 30   | 15              | 27   | 13,5 | 19 | 19 | 19 | 8,16                        | FI-RSW-10LR-WD-B-W3         |
|        | 12                  | 400       | G 1/4            | 18,8 | 10 | 22   | 31   | 15              | 30,7 | 15,5 | 22 | 19 | 22 | 10,06                       | FI-RSW-12LR1/4-WD-B-W3      |
|        | 12                  | 400       | G 3/8            | 22,8 | 12 | 24,5 | 32,5 | 17,5            | 32,5 | 16   | 24 | 22 | 22 | 13,94                       | FI-RSW-12LR-WD-B-W3         |
|        | 15                  | 400       | G 1/2            | 27,9 | 14 | 27   | 35   | 21              | 43   | 19,5 | 30 | 27 | 27 | 26,03                       | FI-RSW-15LR-WD-B-W3         |
|        | 18                  | 400       | G 1/2            | 27,9 | 12 | 28   | 37   | 20,5            | 43   | 21,5 | 30 | 27 | 32 | 26,75                       | FI-RSW-18LR-WD-B-W3         |
|        | 22                  | 250       | G 3/4            | 32,9 | 16 | 34,5 | 43,5 | 27              | 48   | 24   | 36 | 32 | 36 | 42,37                       | FI-RSW-22LR-WD-B-W3         |
|        | 28                  | 250       | G 1              | 40,9 | 18 | 39   | 48   | 31,5            | 59   | 30,5 | 46 | 41 | 41 | 84,00                       | FI-RSW-28LR-WD-B-W3         |
|        | 35                  | 250       | G 1 1/4          | 50,9 | 20 | 46   | 57   | 35,5            | 70   | 35,5 | 55 | 50 | 50 | 140,00                      | FI-RSW-35LR-WD-B-W3         |
|        | 42                  | 250       | G 1 1/2          | 55,9 | 22 | 51   | 63   | 40              | 80   | 40,5 | 65 | 55 | 60 | 214,30                      | FI-RSW-42LR-WD-B-W3         |
| S      | 6                   | 500       | G 1/4            | 18,8 | 10 | 23   | 31   | 16              | 27   | 13,5 | 19 | 19 | 17 | 8,36                        | FI-RSW-06SR-WD-B-W3         |
|        | 8                   | 500       | G 1/4            | 18,8 | 10 | 23   | 31   | 16              | 27   | 13,5 | 19 | 19 | 19 | 8,63                        | FI-RSW-08SR-WD-B-W3         |
|        | 10                  | 500       | G 3/8            | 22,8 | 10 | 25,5 | 34,5 | 18              | 32,5 | 16   | 24 | 22 | 22 | 14,36                       | FI-RSW-10SR-WD-B-W3         |
|        | 12                  | 400       | G 3/8            | 22,8 | 10 | 25,5 | 36   | 18              | 32,5 | 16   | 24 | 22 | 24 | 14,86                       | FI-RSW-12SR-WD-B-W3         |
|        | 14                  | 400       | G 1/2            | 27,9 | 14 | 30   | 40   | 22              | 41   | 19,5 | 30 | 27 | 27 | 26,74                       | FI-RSW-14SR-WD-B-W3         |
|        | 16                  | 400       | G 1/2            | 27,9 | 12 | 30   | 40   | 21,5            | 43   | 21,5 | 30 | 27 | 30 | 27,23                       | FI-RSW-16SR-WD-B-W3         |
|        | 20                  | 315       | G 3/4            | 32,9 | 16 | 36,5 | 47,5 | 26              | 48   | 24   | 36 | 32 | 36 | 44,33                       | FI-RSW-20SR-WD-B-W3         |
|        | 25                  | 250       | G 1              | 40,9 | 18 | 43   | 55   | 31              | 59   | 30,5 | 46 | 41 | 46 | 86,90                       | FI-RSW-25SR-WD-B-W3         |
|        | 30                  | 250       | G 1 1/4          | 50,9 | 20 | 50   | 63   | 36,5            | 70   | 35,5 | 55 | 50 | 50 | 144,70                      | FI-RSW-30SR-WD-B-W3         |
|        | 38                  | 250       | G 1 1/2          | 55,9 | 22 | 57   | 72   | 41              | 80   | 40,5 | 65 | 55 | 60 | 223,60                      | FI-RSW-38SR-WD-B-W3         |

<sup>1</sup> Approximate dimension in assembled condition.

<sup>2</sup> Weight excluding cutting ring and union nut.

<sup>3</sup> Standard scope of delivery: Fitting body only.

Port acc. to DIN 3852-2 (Form X) / ISO 1179-1

Male threaded studs were designed for female threaded ports in components made of steel. For applications with components made of softer mating materials (e.g. Aluminium), the use of connectors with additionally rolled male threads is recommended.



Please contact STAUFF prior to the assembly for further information.

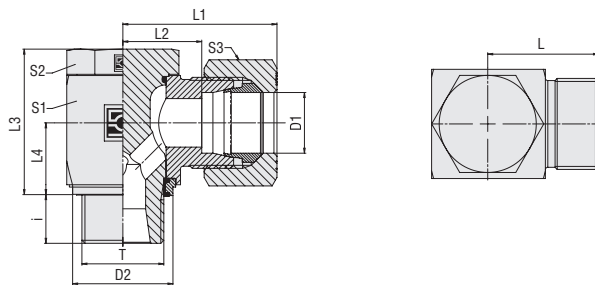
Standard seal material is NBR (Buna-N®).

**Connecting Parts**

-  Cutting Ring  
Type **FI-DS** Page 28
-  Soft-Sealing Cutting Ring  
Type **FI-WDDS** Page 29
-  Support Sleeve  
Type **FI-VH** Page 31
-  STAUFF Form EVO Sealing Ring  
Type **FI-FD** Page 32
-  Union Nut  
Type **FI-M** Page 33
-  37° Flared Tube Fitting Set  
Type **FI-AB** Page 37

**Spare Parts / Accessories**

-  Retaining Ring with Captive Seal  
Type **FI-DIR** Page 245
-  O-Ring  
Type **O-RING** Page 239


**Banjo Elbow (High-Pressure Version)  
Type FI-RSW-...-M-WD ■ Series L / S**

**Retaining Ring with Captive Seal**
**Metric Parallel Thread**

| Series | Tube OD<br>mm | PB<br>bar | Dimensions<br>mm |         |      |      |      |                 |      |      |      |    |    |        |                           | Weight<br>kg ca.<br>per 100 | Ordering Codes <sup>3</sup> |
|--------|---------------|-----------|------------------|---------|------|------|------|-----------------|------|------|------|----|----|--------|---------------------------|-----------------------------|-----------------------------|
|        |               |           | Thread           | T       | D2   | i    | L    | L1 <sup>1</sup> | L2   | L3   | L4   | S1 | S2 | S3     |                           |                             |                             |
| L      | 6             | 500       | M10x1            | 14,9    | 8    | 20   | 28   | 13              | 21   | 10   | 14   | 14 | 14 | 3,68   | FI-RSW-06LM-WD-B-W3       |                             |                             |
|        | 8             | 500       | M12x1,5          | 17,8    | 10   | 21   | 29   | 14              | 27   | 13,5 | 19   | 19 | 17 | 7,68   | FI-RSW-08LM-WD-B-W3       |                             |                             |
|        | 10            | 500       | M14x1,5          | 19,9    | 10   | 22   | 30   | 15              | 27   | 13,5 | 19   | 19 | 19 | 8,28   | FI-RSW-10LM-WD-B-W3       |                             |                             |
|        | 12            | 400       | M16x1,5          | 22,8    | 10   | 24,5 | 32,5 | 17,5            | 32,5 | 16   | 24   | 22 | 22 | 13,60  | FI-RSW-12LM-WD-B-W3       |                             |                             |
|        | 12            | 400       | M18x1,5          | 24,5    | 10   | 26   | 32,5 | 19              | 37,8 | 13,6 | 27   | 24 | 22 | 18,73  | FI-RSW-12LM18x1,5-WD-B-W3 |                             |                             |
|        | 15            | 400       | M18x1,5          | 24,9    | 10   | 27   | 35   | 20              | 37   | 18,5 | 27   | 24 | 27 | 19,21  | FI-RSW-15LM-WD-B-W3       |                             |                             |
|        | 18            | 400       | M22x1,5          | 27,9    | 12   | 28   | 37   | 20,5            | 43   | 21,5 | 30   | 27 | 32 | 27,12  | FI-RSW-18LM-WD-B-W3       |                             |                             |
|        | 22            | 250       | M26x1,5          | 32,5    | 16   | 34,5 | 43,5 | 27              | 48   | 24   | 36   | 32 | 36 | 42,64  | FI-RSW-22LM-WD-B-W3       |                             |                             |
|        | 28            | 250       | M33x2            | 40,9    | 18   | 39   | 48   | 31,5            | 59   | 30,5 | 46   | 41 | 41 | 95,43  | FI-RSW-28LM-WD-B-W3       |                             |                             |
|        | 35            | 250       | M42x2            | 50,9    | 20   | 46   | 57   | 35,5            | 70   | 35,5 | 55   | 50 | 50 | 146,83 | FI-RSW-35LM-WD-B-W3       |                             |                             |
|        | 42            | 250       | M48x2            | 55,9    | 22   | 51   | 63   | 40              | 80   | 40,5 | 65   | 55 | 60 | 221,72 | FI-RSW-42LM-WD-B-W3       |                             |                             |
|        | S             | 6         | 500              | M12x1,5 | 17,8 | 10   | 23   | 31              | 16   | 27   | 13,5 | 19 | 19 | 17     | 8,10                      | FI-RSW-06SM-WD-B-W3         |                             |
|        |               | 8         | 500              | M14x1,5 | 19,9 | 10   | 23   | 31              | 16   | 27   | 13,5 | 19 | 19 | 19     | 8,80                      | FI-RSW-08SM-WD-B-W3         |                             |
|        |               | 10        | 500              | M16x1,5 | 22,8 | 10   | 25,5 | 34,5            | 18   | 32,5 | 16   | 24 | 22 | 22     | 14,19                     | FI-RSW-10SM-WD-B-W3         |                             |
| 12     |               | 400       | M18x1,5          | 24,9    | 10   | 27   | 36   | 19,5            | 37   | 18,5 | 27   | 24 | 24 | 19,53  | FI-RSW-12SM-WD-B-W3       |                             |                             |
| 14     |               | 400       | M20x1,5          | 27,5    | 12   | 30   | 40   | 22              | 41   | 19,5 | 30   | 27 | 27 | 29,38  | FI-RSW-14SM-WD-B-W3       |                             |                             |
| 16     |               | 400       | M22x1,5          | 27,9    | 12   | 30   | 40   | 21,5            | 43   | 21,5 | 30   | 27 | 30 | 27,53  | FI-RSW-16SM-WD-B-W3       |                             |                             |
| 20     |               | 315       | M27x2            | 32,9    | 16   | 36,5 | 47,5 | 26              | 48   | 24   | 36   | 32 | 36 | 44,30  | FI-RSW-20SM-WD-B-W3       |                             |                             |
| 25     |               | 250       | M33x2            | 40,9    | 18   | 43   | 55   | 31              | 59   | 30,5 | 46   | 41 | 46 | 224,50 | FI-RSW-25SM-WD-B-W3       |                             |                             |
| 30     |               | 250       | M42x2            | 50,9    | 20   | 50   | 63   | 36,5            | 70   | 35,5 | 55   | 50 | 50 | 150,16 | FI-RSW-30SM-WD-B-W3       |                             |                             |
| 38     |               | 250       | M48x2            | 55,9    | 22   | 57   | 72   | 41              | 80   | 40,5 | 65   | 55 | 60 | 224,90 | FI-RSW-38SM-WD-B-W3       |                             |                             |

<sup>1</sup> Approximate dimension in assembled condition.

<sup>2</sup> Weight excluding cutting ring and union nut.

<sup>3</sup> Standard scope of delivery: Fitting body only.

Standard seal material is NBR (Buna-N®).

Port acc. to DIN 3852-1 (Form X) / ISO 9974-1

Male threaded studs were designed for female threaded ports in components made of steel. For applications with components made of softer mating materials (e.g. Aluminium), the use of connectors with additionally rolled male threads is recommended.

Please contact STAUFF prior to the assembly for further information.

**Ordering Codes**
**\*FI-RSW\*-10\*L\*M\*-WD\*-B\*-W3\*-MS**

 \* Banjo Elbow (High-Pressure Version) **FI-RSW**

 \* Outside Tube Diameter D1 (in mm) **-10**

 \* Series Light Series **L**  
 Heavy Series **S**

 \* Thread Type Metric Parallel Thread **M**

If required, please indicate special sizes, e.g. M12x1.5!

 \* Seal Type Retaining Ring with Captive Seal **-WD**

 \* Seal Material NBR (Buna-N®) **-B**  
 FKM (Viton®) **-V**

 \* Material Code Steel, zinc/nickel-plated **-W3**

Please contact STAUFF for alternative materials and surface finishings.

 \* Assembling / Kitting Fitting body only **—**

 Fitting body supplied with cutting ring and union nut **-MS**

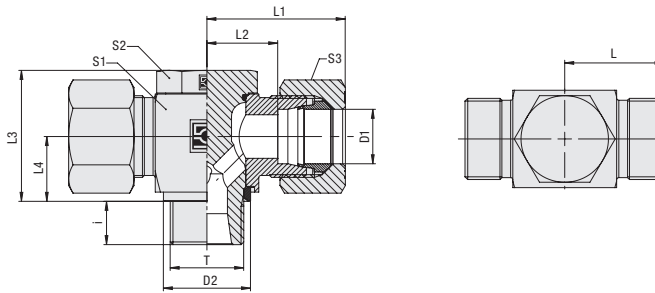
 Fitting body supplied with soft-sealing cutting ring and union nut **-MSV**
**Connecting Parts**

|  |   |         |
|--|---|---------|
|  | Cutting Ring<br>Type <b>FI-DS</b>                 | Page 28 |
|  | Soft-Sealing Cutting Ring<br>Type <b>FI-WDDS</b>  | Page 29 |
|  | Support Sleeve<br>Type <b>FI-VH</b>               | Page 31 |
|  | STAUFF Form EVO Sealing Ring<br>Type <b>FI-FD</b> | Page 32 |
|  | Union Nut<br>Type <b>FI-M</b>                     | Page 33 |
|  | 37° Flared Tube Fitting Set<br>Type <b>FI-AB</b>  | Page 37 |

**Spare Parts / Accessories**

|  |  |          |
|--|--|----------|
|  | Retaining Ring with Captive Seal<br>Type <b>FI-DIR</b> | Page 245 |
|  | O-Ring<br>Type <b>O-RING</b>                           | Page 239 |

**Banjo Tee (High-Pressure Version)**  
**Type FI-RST-...-R-DK ▪ Series L / S**



**Whitworth Parallel Pipe Thread (BSPP)**

**External Metallic Sealing Ring**

**Ordering Codes**

**\*FI-RST\*-10\*L\*R\*-DK\*-B\*-W3\*-MS**

\* Banjo Tee (High-Pressure Version) **FI-RST**

\* Outside Tube Diameter D1 (in mm) **-10**

\* Series Light Series **L**  
 Heavy Series **S**

\* Thread Type Whitworth Parallel Pipe Thread (BSPP) **R**

If required, please indicate special sizes, e.g. R1/8!

\* Seal Type External Metallic Sealing Ring **-DK**

\* Seal Material NBR (Buna-N®) **-B**  
 FKM (Viton®) **-V**

\* Material Code Steel, zinc/nickel-plated **-W3**

Please contact STAUFF for alternative materials and surface finishings.

\* Assembling / Kitting Fitting body only **—**

Fitting body supplied with cutting ring and union nut **-MS**

Fitting body supplied with soft-sealing cutting ring and union nut **-MSV**

| Series | Tube OD<br>mm<br>D1 | PB<br>bar | Dimensions<br>mm |      |    |      |      |                 |      |      |    |    |    | Weight<br>kg ca.<br>per 100 | Ordering Codes <sup>3</sup> |
|--------|---------------------|-----------|------------------|------|----|------|------|-----------------|------|------|----|----|----|-----------------------------|-----------------------------|
|        |                     |           | Thread           | T    | D2 | i    | L    | L1 <sup>1</sup> | L2   | L3   | L4 | S1 | S2 |                             |                             |
| L      | 6                   | 500       | G 1/8            | 13   | 8  | 20   | 28   | 13              | 21   | 10,5 | 14 | 14 | 14 | 4,57                        | FI-RST-06LR-DK-B-W3         |
|        | 8                   | 500       | G 1/4            | 17,7 | 10 | 21   | 29   | 14              | 27   | 13,5 | 19 | 19 | 17 | 8,60                        | FI-RST-08LR-DK-B-W3         |
|        | 10                  | 500       | G 1/4            | 17,7 | 10 | 22   | 30   | 15              | 27   | 13,5 | 19 | 19 | 19 | 8,93                        | FI-RST-10LR-DK-B-W3         |
|        | 12                  | 400       | G 3/8            | 22   | 12 | 24,5 | 32,5 | 17,5            | 32,5 | 16   | 24 | 22 | 22 | 15,04                       | FI-RST-12LR-DK-B-W3         |
|        | 15                  | 400       | G 1/2            | 26   | 14 | 28   | 35   | 21              | 43   | 19,5 | 30 | 27 | 27 | 30,15                       | FI-RST-15LR-DK-B-W3         |
|        | 18                  | 400       | G 1/2            | 26   | 12 | 28   | 37   | 20,5            | 43   | 21,5 | 30 | 27 | 32 | 31,25                       | FI-RST-18LR-DK-B-W3         |
|        | 22                  | 250       | G 3/4            | 32   | 16 | 34,5 | 43,5 | 27              | 48   | 24   | 36 | 32 | 36 | 46,23                       | FI-RST-22LR-DK-B-W3         |
|        | 28                  | 250       | G 1              | 39   | 18 | 39   | 48   | 31,5            | 59   | 30,5 | 46 | 41 | 41 | 80,19                       | FI-RST-28LR-DK-B-W3         |
|        | 35                  | 250       | G 1 1/4          | 49   | 20 | 46   | 57   | 35,5            | 70   | 35,5 | 55 | 50 | 50 | 145,46                      | FI-RST-35LR-DK-B-W3         |
|        | 42                  | 250       | G 1 1/2          | 55   | 22 | 51   | 63   | 40              | 80   | 40,5 | 65 | 55 | 60 | 217,14                      | FI-RST-42LR-DK-B-W3         |
| S      | 6                   | 500       | G 1/4            | 17,7 | 10 | 23   | 31   | 16              | 27   | 13,5 | 19 | 19 | 17 | 9,48                        | FI-RST-06SR-DK-B-W3         |
|        | 8                   | 500       | G 1/4            | 17,7 | 10 | 23   | 31   | 16              | 27   | 13,5 | 19 | 19 | 19 | 9,97                        | FI-RST-08SR-DK-B-W3         |
|        | 10                  | 500       | G 3/8            | 22   | 10 | 25,5 | 34,5 | 18              | 32,5 | 16   | 24 | 22 | 22 | 19,10                       | FI-RST-10SR-DK-B-W3         |
|        | 12                  | 400       | G 3/8            | 22   | 10 | 27   | 36   | 18              | 32,5 | 16   | 24 | 22 | 24 | 16,38                       | FI-RST-12SR-DK-B-W3         |
|        | 14                  | 400       | G 1/2            | 26   | 14 | 30   | 40   | 22              | 41   | 19,5 | 30 | 27 | 27 | 91,00                       | FI-RST-14SR-DK-B-W3         |
|        | 16                  | 400       | G 1/2            | 26   | 12 | 30   | 40   | 21,5            | 43   | 21,5 | 30 | 27 | 30 | 31,85                       | FI-RST-16SR-DK-B-W3         |
|        | 20                  | 315       | G 3/4            | 32   | 16 | 36,5 | 47,5 | 26              | 48   | 24   | 36 | 32 | 36 | 48,45                       | FI-RST-20SR-DK-B-W3         |
|        | 25                  | 250       | G 1              | 39   | 18 | 43   | 55   | 31              | 59   | 30,5 | 46 | 41 | 46 | 93,55                       | FI-RST-25SR-DK-B-W3         |
|        | 30                  | 250       | G 1 1/4          | 49   | 20 | 50   | 63   | 36,5            | 70   | 35,5 | 55 | 50 | 50 | 153,59                      | FI-RST-30SR-DK-B-W3         |
|        | 38                  | 250       | G 1 1/2          | 55   | 22 | 57   | 72   | 41              | 80   | 40,5 | 65 | 55 | 60 | 236,22                      | FI-RST-38SR-DK-B-W3         |

<sup>1</sup> Approximate dimension in assembled condition.

<sup>2</sup> Weight excluding cutting ring and union nut.

<sup>3</sup> Standard scope of delivery: Fitting body only.

Port acc. to DIN 3852-2 (Form X) / ISO 1179-1

Male threaded studs were designed for female threaded ports in components made of steel. For applications with components made of softer mating materials (e.g. Aluminium), the use of connectors with additionally rolled male threads is recommended.

Please contact STAUFF prior to the assembly for further information.



For use with aggressive media and/or at elevated temperatures, please remove the o-ring from the groove located on the banjo bolt prior to installation.

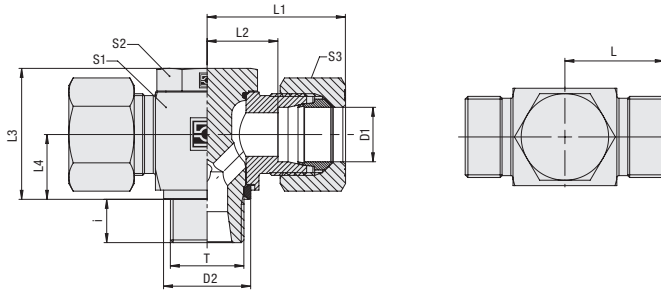
Standard seal material is NBR (Buna-N®).

**Connecting Parts**

-  Cutting Ring  
Type **FI-DS** Page 28
-  Soft-Sealing Cutting Ring  
Type **FI-WDDS** Page 29
-  Support Sleeve  
Type **FI-VH** Page 31
-  STAUFF Form EVO Sealing Ring  
Type **FI-FD** Page 32
-  Union Nut  
Type **FI-M** Page 33
-  37° Flared Tube Fitting Set  
Type **FI-AB** Page 37

**Spare Parts / Accessories**

-  External Metallic Sealing Ring  
Type **FI-DKR** Page 245
-  O-Ring  
Type **O-RING** Page 239


**Banjo Tee (High-Pressure Version)  
Type FI-RST-...-M-DK ■ Series L / S**

**External Metallic Sealing Ring**
**Metric Parallel Thread**

| Series | Tube OD<br>mm | PB<br>bar | Dimensions<br>mm |      |    |      |      |                 |      |      |    |    |    |        |                     | Weight<br>kg ca.<br>per 100 | Ordering Codes <sup>3</sup> |
|--------|---------------|-----------|------------------|------|----|------|------|-----------------|------|------|----|----|----|--------|---------------------|-----------------------------|-----------------------------|
|        |               |           | Thread           | T    | D2 | i    | L    | L1 <sup>1</sup> | L2   | L3   | L4 | S1 | S2 | S3     |                     |                             |                             |
| L      | 6             | 500       | M10x1            | 13   | 8  | 20   | 28   | 13              | 21   | 10   | 14 | 14 | 14 | 4,59   | FI-RST-06LM-DK-B-W3 |                             |                             |
|        | 8             | 500       | M12x1,5          | 17,7 | 10 | 21   | 29   | 14              | 27   | 13,5 | 19 | 19 | 17 | 9,66   | FI-RST-08LM-DK-B-W3 |                             |                             |
|        | 10            | 500       | M14x1,5          | 17,7 | 10 | 22   | 30   | 15              | 27   | 13,5 | 19 | 19 | 19 | 11,05  | FI-RST-10LM-DK-B-W3 |                             |                             |
|        | 12            | 400       | M16x1,5          | 21   | 10 | 24,5 | 32,5 | 17,5            | 32,5 | 16   | 24 | 22 | 22 | 14,71  | FI-RST-12LM-DK-B-W3 |                             |                             |
|        | 15            | 400       | M18x1,5          | 23   | 10 | 27   | 35   | 20              | 37   | 18,5 | 27 | 24 | 27 | 10,80  | FI-RST-15LM-DK-B-W3 |                             |                             |
|        | 18            | 400       | M22x1,5          | 27   | 12 | 28   | 37   | 20,5            | 43   | 21,5 | 30 | 27 | 32 | 31,81  | FI-RST-18LM-DK-B-W3 |                             |                             |
|        | 22            | 250       | M26x1,5          | 31   | 16 | 34,5 | 43,5 | 27              | 48   | 24   | 36 | 32 | 36 | 44,90  | FI-RST-22LM-DK-B-W3 |                             |                             |
|        | 28            | 250       | M33x2            | 39   | 18 | 39   | 48   | 31,5            | 59   | 30,5 | 46 | 41 | 41 | 85,11  | FI-RST-28LM-DK-B-W3 |                             |                             |
|        | 35            | 250       | M42x2            | 49   | 20 | 46   | 57   | 35,5            | 70   | 35,5 | 55 | 50 | 50 | 145,36 | FI-RST-35LM-DK-B-W3 |                             |                             |
|        | 42            | 250       | M48x2            | 55   | 22 | 51   | 63   | 40              | 80   | 40,5 | 65 | 55 | 60 | 218,24 | FI-RST-42LM-DK-B-W3 |                             |                             |
| S      | 6             | 500       | M12x1,5          | 17,7 | 10 | 23   | 31   | 16              | 27   | 13,5 | 19 | 19 | 17 | 11,23  | FI-RST-06SM-DK-B-W3 |                             |                             |
|        | 8             | 500       | M14x1,5          | 17,7 | 10 | 23   | 31   | 16              | 27   | 13,5 | 19 | 19 | 19 | 12,02  | FI-RST-08SM-DK-B-W3 |                             |                             |
|        | 10            | 500       | M16x1,5          | 21   | 10 | 25,5 | 34,5 | 18              | 32,5 | 16   | 24 | 22 | 22 | 19,01  | FI-RST-10SM-DK-B-W3 |                             |                             |
|        | 12            | 400       | M18x1,5          | 23   | 10 | 27   | 36   | 19,5            | 37   | 18,5 | 27 | 24 | 24 | 21,32  | FI-RST-12SM-DK-B-W3 |                             |                             |
|        | 14            | 400       | M20x1,5          | 25   | 12 | 30   | 40   | 22              | 41   | 19,5 | 30 | 27 | 27 | 30,96  | FI-RST-14SM-DK-B-W3 |                             |                             |
|        | 16            | 400       | M22x1,5          | 27   | 12 | 30   | 40   | 21,5            | 43   | 21,5 | 30 | 27 | 30 | 32,41  | FI-RST-16SM-DK-B-W3 |                             |                             |
|        | 20            | 315       | M27x2            | 32   | 16 | 36,5 | 47,5 | 26              | 48   | 24   | 36 | 32 | 36 | 16,50  | FI-RST-20SM-DK-B-W3 |                             |                             |
|        | 25            | 250       | M33x2            | 39   | 18 | 43   | 55   | 31              | 59   | 30,5 | 46 | 41 | 46 | 93,47  | FI-RST-25SM-DK-B-W3 |                             |                             |
|        | 30            | 250       | M42x2            | 49   | 20 | 50   | 63   | 36,5            | 70   | 35,5 | 55 | 50 | 50 | 153,16 | FI-RST-30SM-DK-B-W3 |                             |                             |
|        | 38            | 250       | M48x2            | 55   | 22 | 57   | 72   | 41              | 80   | 40,5 | 65 | 55 | 60 | 237,04 | FI-RST-38SM-DK-B-W3 |                             |                             |

<sup>1</sup> Approximate dimension in assembled condition.

<sup>2</sup> Weight excluding cutting ring and union nut.

<sup>3</sup> Standard scope of delivery: Fitting body only.

Standard seal material is NBR (Buna-N®).



For use with aggressive media and/or at elevated temperatures, please remove the o-ring from the groove located on the banjo bolt prior to installation.

Port acc. to DIN 3852-1 (Form X) / ISO 9974-1

Male threaded studs were designed for female threaded ports in components made of steel. For applications with components made of softer mating materials (e.g. Aluminium), the use of connectors with additionally rolled male threads is recommended.

Please contact STAUFF prior to the assembly for further information.

**Ordering Codes**
**\*FI-RST\*-10\*L\*M\*-DK\*-B\*-W3\*-MS**

 \* Banjo Tee (High-Pressure Version) **FI-RST**

 \* Outside Tube Diameter D1 (in mm) **-10**

 \* Series Light Series **L**  
Heavy Series **S**

 \* Thread Type Metric Parallel Thread **M**

If required, please indicate special sizes, e.g. M12x1.5!

 \* Seal Type External Metallic Sealing Ring **-DK**

 \* Seal Material NBR (Buna-N®) **-B**  
FKM (Viton®) **-V**

 \* Material Code Steel, zinc/nickel-plated **-W3**

Please contact STAUFF for alternative materials and surface finishings.

 \* Assembling / Kitting Fitting body only **—**

 Fitting body supplied with cutting ring and union nut **-MS**

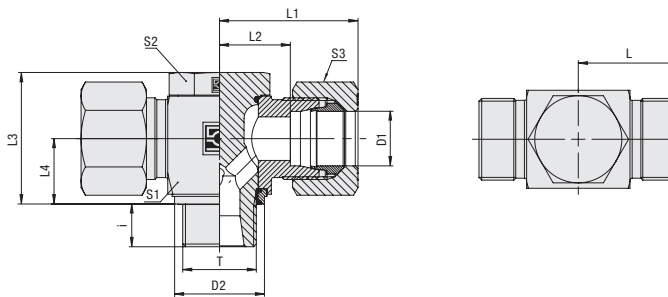
 Fitting body supplied with soft-sealing cutting ring and union nut **-MSV**
**Connecting Parts**

|  |   |         |
|--|---|---------|
|  | Cutting Ring<br>Type <b>FI-DS</b>                 | Page 28 |
|  | Soft-Sealing Cutting Ring<br>Type <b>FI-WDDS</b>  | Page 29 |
|  | Support Sleeve<br>Type <b>FI-VH</b>               | Page 31 |
|  | STAUFF Form EVO Sealing Ring<br>Type <b>FI-FD</b> | Page 32 |
|  | Union Nut<br>Type <b>FI-M</b>                     | Page 33 |
|  | 37° Flared Tube Fitting Set<br>Type <b>FI-AB</b>  | Page 37 |

**Spare Parts / Accessories**

|  |  |          |
|--|--|----------|
|  | External Metallic Sealing Ring<br>Type <b>FI-DKR</b> | Page 245 |
|  | O-Ring<br>Type <b>O-RING</b>                         | Page 239 |

## Banjo Tee (High-Pressure Version) Type FI-RST-...-R-WD • Series L / S



### Ordering Codes

**\*FI-RST\*-10\*L\*R\*-WD\*-B\*-W3\*-MS**

\* Banjo Tee (High-Pressure Version) **FI-RST**

\* Outside Tube Diameter D1 (in mm) **-10**

\* Series Light Series **L**  
Heavy Series **S**

\* Thread Type Whitworth Parallel Pipe Thread (BSPP) **R**

If required, please indicate special sizes, e.g. R1/8!

\* Seal Type Retaining Ring with Captive Seal **-WD**

\* Seal Material NBR (Buna-N®) **-B**  
FKM (Viton®) **-V**

\* Material Code Steel, zinc/nickel-plated **-W3**

Please contact STAUFF for alternative materials and surface finishings.

\* Assembling / Kitting Fitting body only **-**

Fitting body supplied with cutting ring and union nut **-MS**

Fitting body supplied with soft-sealing cutting ring and union nut **-MSV**

### Whitworth Parallel Pipe Thread (BSPP)

### Retaining Ring with Captive Seal

| Series | Tube OD<br>mm<br>D1 | PB<br>bar | Dimensions<br>mm |      |    |      |      |                 |      |      |    |    |    | Weight<br>kg ca.<br>per 100 | Ordering Codes <sup>3</sup> |
|--------|---------------------|-----------|------------------|------|----|------|------|-----------------|------|------|----|----|----|-----------------------------|-----------------------------|
|        |                     |           | Thread           | T    | D2 | i    | L    | L1 <sup>1</sup> | L2   | L3   | L4 | S1 | S2 |                             |                             |
| L      | 6                   | 500       | G 1/8            | 14,9 | 8  | 20   | 28   | 13              | 21   | 10,5 | 14 | 14 | 14 | 4,31                        | FI-RST-06LR-WD-B-W3         |
|        | 8                   | 500       | G 1/4            | 18,8 | 10 | 21   | 29   | 14              | 27   | 13,5 | 19 | 19 | 17 | 8,60                        | FI-RST-08LR-WD-B-W3         |
|        | 10                  | 500       | G 1/4            | 18,8 | 10 | 22   | 30   | 15              | 27   | 13,5 | 19 | 19 | 19 | 8,92                        | FI-RST-10LR-WD-B-W3         |
|        | 12                  | 400       | G 3/8            | 22,8 | 12 | 24,5 | 32,5 | 17,5            | 32,5 | 16   | 24 | 22 | 22 | 14,78                       | FI-RST-12LR-WD-B-W3         |
|        | 15                  | 400       | G 1/2            | 27,9 | 14 | 28   | 35   | 21              | 43   | 19,5 | 30 | 27 | 27 | 27,43                       | FI-RST-15LR-WD-B-W3         |
|        | 18                  | 400       | G 1/2            | 27,9 | 12 | 28   | 37   | 20,5            | 43   | 21,5 | 30 | 27 | 32 | 1,52                        | FI-RST-18LR-WD-B-W3         |
|        | 22                  | 250       | G 3/4            | 32,9 | 16 | 34,5 | 43,5 | 27              | 48   | 24   | 36 | 32 | 36 | 45,42                       | FI-RST-22LR-WD-B-W3         |
|        | 28                  | 250       | G 1              | 40,9 | 18 | 39   | 48   | 31,5            | 59   | 30,5 | 46 | 41 | 41 | 85,48                       | FI-RST-28LR-WD-B-W3         |
|        | 35                  | 250       | G 1 1/4          | 50,9 | 20 | 46   | 57   | 35,5            | 70   | 35,5 | 55 | 50 | 50 | 145,79                      | FI-RST-35LR-WD-B-W3         |
|        | 42                  | 250       | G 1 1/2          | 55,9 | 22 | 51   | 63   | 40              | 80   | 40,5 | 65 | 55 | 60 | 217,42                      | FI-RST-42LR-WD-B-W3         |
| S      | 6                   | 500       | G 1/4            | 18,8 | 10 | 23   | 31   | 16              | 27   | 13,5 | 19 | 19 | 17 | 9,30                        | FI-RST-06SR-WD-B-W3         |
|        | 8                   | 500       | G 1/4            | 18,8 | 10 | 23   | 31   | 16              | 27   | 13,5 | 19 | 19 | 19 | 9,97                        | FI-RST-08SR-WD-B-W3         |
|        | 10                  | 500       | G 3/8            | 22,8 | 10 | 25,5 | 34,5 | 18              | 32,5 | 16   | 24 | 22 | 22 | 19,08                       | FI-RST-10SR-WD-B-W3         |
|        | 12                  | 400       | G 3/8            | 22,8 | 10 | 27   | 36   | 18              | 32,5 | 16   | 24 | 22 | 24 | 16,36                       | FI-RST-12SR-WD-B-W3         |
|        | 14                  | 400       | G 1/2            | 27,9 | 14 | 30   | 40   | 22              | 41   | 19,5 | 30 | 27 | 27 | 31,86                       | FI-RST-14SR-WD-B-W3         |
|        | 16                  | 400       | G 1/2            | 27,9 | 12 | 30   | 40   | 21,5            | 43   | 21,5 | 30 | 27 | 30 | 29,20                       | FI-RST-16SR-WD-B-W3         |
|        | 20                  | 315       | G 3/4            | 32,9 | 16 | 36,5 | 47,5 | 26              | 48   | 24   | 36 | 32 | 36 | 48,66                       | FI-RST-20SR-WD-B-W3         |
|        | 25                  | 250       | G 1              | 40,9 | 18 | 43   | 55   | 31              | 59   | 30,5 | 46 | 41 | 46 | 93,55                       | FI-RST-25SR-WD-B-W3         |
|        | 30                  | 250       | G 1 1/4          | 50,9 | 20 | 50   | 63   | 36,5            | 70   | 35,5 | 55 | 50 | 50 | 153,59                      | FI-RST-30SR-WD-B-W3         |
|        | 38                  | 250       | G 1 1/2          | 55,9 | 22 | 57   | 72   | 41              | 80   | 40,5 | 65 | 55 | 60 | 236,22                      | FI-RST-38SR-WD-B-W3         |

<sup>1</sup> Approximate dimension in assembled condition.

<sup>2</sup> Weight excluding cutting ring and union nut.

<sup>3</sup> Standard scope of delivery: Fitting body only.

Standard seal material is NBR (Buna-N®).

Port acc. to DIN 3852-2 (Form X) / ISO 1179-1

Male threaded studs were designed for female threaded ports in components made of steel. For applications with components made of softer mating materials (e.g. Aluminium), the use of connectors with additionally rolled male threads is recommended.

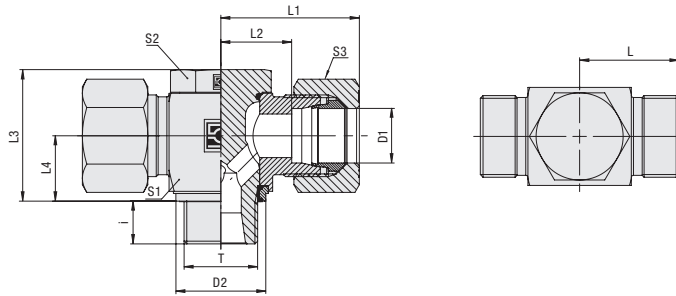
Please contact STAUFF prior to the assembly for further information.

### Connecting Parts

|  |   |         |
|--|---|---------|
|  | Cutting Ring<br>Type <b>FI-DS</b>                 | Page 28 |
|  | Soft-Sealing Cutting Ring<br>Type <b>FI-WDDS</b>  | Page 29 |
|  | Support Sleeve<br>Type <b>FI-VH</b>               | Page 31 |
|  | STAUFF Form EVO Sealing Ring<br>Type <b>FI-FD</b> | Page 32 |
|  | Union Nut<br>Type <b>FI-M</b>                     | Page 33 |
|  | 37° Flared Tube Fitting Set<br>Type <b>FI-AB</b>  | Page 37 |

### Spare Parts / Accessories

|  |  |          |
|--|--|----------|
|  | Retaining Ring with Captive Seal<br>Type <b>FI-DIR</b> | Page 245 |
|  | O-Ring<br>Type <b>O-RING</b>                           | Page 239 |


**Banjo Tee (High-Pressure Version)  
Type FI-RST-...-M-WD ■ Series L / S**

**Retaining Ring with Captive Seal**
**Metric Parallel Thread**

| Series | Tube OD<br>mm | PB<br>bar | Dimensions<br>mm |      |    |      |      |                 |      |      |    |    |    | Weight<br>kg ca.<br>per 100 | Ordering Codes <sup>3</sup> |
|--------|---------------|-----------|------------------|------|----|------|------|-----------------|------|------|----|----|----|-----------------------------|-----------------------------|
|        |               |           | Thread           | T    | D2 | i    | L    | L1 <sup>1</sup> | L2   | L3   | L4 | S1 | S2 |                             |                             |
| L      | 6             | 500       | M10x1            | 14,9 | 8  | 20   | 28   | 13              | 21   | 10   | 14 | 14 | 14 | 5,83                        | FI-RST-06LM-WD-B-W3         |
|        | 8             | 500       | M12x1,5          | 17,8 | 10 | 21   | 29   | 14              | 27   | 13,5 | 19 | 19 | 17 | 9,66                        | FI-RST-08LM-WD-B-W3         |
|        | 10            | 500       | M14x1,5          | 19,9 | 10 | 22   | 30   | 15              | 27   | 13,5 | 19 | 19 | 19 | 13,25                       | FI-RST-10LM-WD-B-W3         |
|        | 12            | 400       | M16x1,5          | 22,8 | 10 | 24,5 | 32,5 | 17,5            | 32,5 | 16   | 24 | 22 | 22 | 14,78                       | FI-RST-12LM-WD-B-W3         |
|        | 15            | 400       | M18x1,5          | 24,9 | 10 | 27   | 35   | 20              | 37   | 18,5 | 27 | 24 | 27 | 23,90                       | FI-RST-15LM-WD-B-W3         |
|        | 18            | 400       | M22x1,5          | 27,9 | 12 | 28   | 37   | 20,5            | 43   | 21,5 | 30 | 27 | 32 | 29,91                       | FI-RST-18LM-WD-B-W3         |
|        | 22            | 250       | M26x1,5          | 32,5 | 16 | 34,5 | 43,5 | 27              | 48   | 24   | 36 | 32 | 36 | 42,56                       | FI-RST-22LM-WD-B-W3         |
|        | 28            | 250       | M33x2            | 40,9 | 18 | 39   | 48   | 31,5            | 59   | 30,5 | 46 | 41 | 41 | 95,43                       | FI-RST-28LM-WD-B-W3         |
|        | 35            | 250       | M42x2            | 50,9 | 20 | 46   | 57   | 35,5            | 70   | 35,5 | 55 | 50 | 50 | 145,36                      | FI-RST-35LM-WD-B-W3         |
|        | 42            | 250       | M48x2            | 55,9 | 22 | 51   | 63   | 40              | 80   | 40,5 | 65 | 55 | 60 | 221,72                      | FI-RST-42LM-WD-B-W3         |
| S      | 6             | 500       | M12x1,5          | 17,8 | 10 | 23   | 31   | 16              | 27   | 13,5 | 19 | 19 | 17 | 10,08                       | FI-RST-06SM-WD-B-W3         |
|        | 8             | 500       | M14x1,5          | 19,9 | 10 | 23   | 31   | 16              | 27   | 13,5 | 19 | 19 | 19 | 10,12                       | FI-RST-08SM-WD-B-W3         |
|        | 10            | 500       | M16x1,5          | 22,8 | 10 | 25,5 | 34,5 | 18              | 32,5 | 16   | 24 | 22 | 22 | 14,18                       | FI-RST-10SM-WD-B-W3         |
|        | 12            | 400       | M18x1,5          | 24,9 | 10 | 27   | 36   | 19,5            | 37   | 18,5 | 27 | 24 | 24 | 19,66                       | FI-RST-12SM-WD-B-W3         |
|        | 14            | 400       | M20x1,5          | 27,5 | 12 | 30   | 40   | 22              | 41   | 19,5 | 30 | 27 | 27 | 29,38                       | FI-RST-14SM-WD-B-W3         |
|        | 16            | 400       | M22x1,5          | 27,9 | 12 | 30   | 40   | 21,5            | 43   | 21,5 | 30 | 27 | 30 | 35,10                       | FI-RST-16SM-WD-B-W3         |
|        | 20            | 315       | M27x2            | 32,9 | 16 | 36,5 | 47,5 | 26              | 48   | 24   | 36 | 32 | 36 | 45,86                       | FI-RST-20SM-WD-B-W3         |
|        | 25            | 250       | M33x2            | 40,9 | 18 | 43   | 55   | 31              | 59   | 30,5 | 46 | 41 | 46 | 82,57                       | FI-RST-25SM-WD-B-W3         |
|        | 30            | 250       | M42x2            | 50,9 | 20 | 50   | 63   | 36,5            | 70   | 35,5 | 55 | 50 | 50 | 150,16                      | FI-RST-30SM-WD-B-W3         |
|        | 38            | 250       | M48x2            | 55,9 | 22 | 57   | 72   | 41              | 80   | 40,5 | 65 | 55 | 60 | 236,35                      | FI-RST-38SM-WD-B-W3         |

<sup>1</sup> Approximate dimension in assembled condition.

<sup>2</sup> Weight excluding cutting ring and union nut.

<sup>3</sup> Standard scope of delivery: Fitting body only.

Standard seal material is NBR (Buna-N®).

Port acc. to DIN 3852-1 (Form X) / ISO 9974-1

Male threaded studs were designed for female threaded ports in components made of steel. For applications with components made of softer mating materials (e.g. Aluminium), the use of connectors with additionally rolled male threads is recommended.

Please contact STAUFF prior to the assembly for further information.

**Ordering Codes**
**\*FI-RST\*-10\*L\*M\*-WD\*-B\*-W3\*-MS**

|   |  |
|---|--|
| * Banjo Tee (High-Pressure Version)                                     | <b>FI-RST</b>  |
| * Outside Tube Diameter D1 (in mm)                                      | <b>-10</b>   |
| * Series  | Light Series <b>L</b><br>Heavy Series <b>S</b>   |
| * Thread Type   | Metric Parallel Thread <b>M</b>  |
| If required, please indicate special sizes, e.g. M12x1.5!               |  |
| * Seal Type   | Retaining Ring with Captive Seal <b>-WD</b>  |
| * Seal Material   | NBR (Buna-N®) <b>-B</b><br>FKM (Viton®) <b>-V</b>  |
| * Material Code   | Steel, zinc/nickel-plated <b>-W3</b>   |
| Please contact STAUFF for alternative materials and surface finishings. |  |
| * Assembling / Kitting  | Fitting body only <b>—</b><br>Fitting body supplied with cutting ring and union nut <b>-MS</b><br>Fitting body supplied with soft-sealing cutting ring and union nut <b>-MSV</b> |

**Connecting Parts**

|  |   |         |
|--|---|---------|
|  | Cutting Ring<br>Type <b>FI-DS</b>                 | Page 28 |
|  | Soft-Sealing Cutting Ring<br>Type <b>FI-WDDS</b>  | Page 29 |
|  | Support Sleeve<br>Type <b>FI-VH</b>               | Page 31 |
|  | STAUFF Form EVO Sealing Ring<br>Type <b>FI-FD</b> | Page 32 |
|  | Union Nut<br>Type <b>FI-M</b>                     | Page 33 |
|  | 37° Flared Tube Fitting Set<br>Type <b>FI-AB</b>  | Page 37 |

**Spare Parts / Accessories**

|  |  |          |
|--|--|----------|
|  | Retaining Ring with Captive Seal<br>Type <b>FI-DIR</b> | Page 245 |
|  | O-Ring<br>Type <b>O-RING</b>                           | Page 239 |