



STAUFF Connect

Metric tube connectors, assembly tools
and accessories

Product Catalogue

Version
10/2025



**Straight Bulkhead Fitting**

FI-GS

108

**Elbow Bulkhead Fittings**

FI-WS

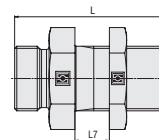
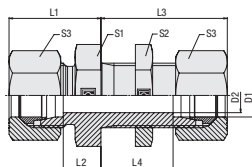
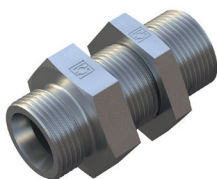
109

**Straight Bulkhead Weld Fitting**

FI-ES

110

Straight Bulkhead Fitting
Type FI-GS ▪ Series L / S



E

Ordering Codes

***FI-GS*-10*L*-W3*-MS**

* Straight Bulkhead Fitting		FI-GS
* Outside Tube Diameter D1 (in mm)		-10
* Series	Light Series	L
	Heavy Series	S
* Material Code	Steel, zinc/nickel-plated	-W3
Please contact STAUFF for alternative materials and surface finishings.		
* Assembling / Kitting	Fitting body only	—
	Fitting body supplied with hexagon lock nut	-SKM
	Fitting body supplied with cutting rings and union nuts	-MS
	Fitting body supplied with soft-sealing cutting rings and union nuts	-MSV

Series	Tube OD mm D1	PN bar	Dimensions mm										Weight kg ca. per 100	Ordering Codes ³
			D2	L	L1 ¹	L2	L3 ¹	L4	L7 max	S1	S2	S3		
L	6	500	4	48	22	7	42	27	16	17	17	14	3,85	FI-GS-06L-W3-SKM
	8	500	6	49	23	8	42	27	16	19	19	17	4,93	FI-GS-08L-W3-SKM
	10	500	8	52	25	10	43	28	16	22	22	19	6,76	FI-GS-10L-W3-SKM
	12	400	10	53	25	10	44	29	16	24	24	22	7,81	FI-GS-12L-W3-SKM
	15	400	12	57	27	12	46	31	16	27	30	27	12,89	FI-GS-15L-W3-SKM
	18	400	15	61	30	13,5	49	32,5	16	32	36	32	19,87	FI-GS-18L-W3-SKM
	22	250	19	66	33	16,5	51	34,5	16	36	41	36	25,19	FI-GS-22L-W3-SKM
	28	250	24	69	35	18,5	52	35,5	16	41	46	41	34,12	FI-GS-28L-W3-SKM
	35	250	30	76	40	18,5	58	36,5	16	50	55	50	55,40	FI-GS-35L-W3-SKM
	42	250	36	77	42	19	59	36	16	60	65	60	75,30	FI-GS-42L-W3-SKM
S	6	800	4	55	27	12	44	29	16	19	19	17	6,50	FI-GS-06S-W3-SKM
	8	800	5	56	28	13	44	29	16	22	22	19	8,84	FI-GS-08S-W3-SKM
	10	800	7	59	31	14,5	46	29,5	16	24	24	22	11,18	FI-GS-10S-W3-SKM
	12	630	8	60	31	14,5	47	30,5	16	27	27	24	14,00	FI-GS-12S-W3-SKM
	14	630	10	65	35	17	50	32	16	30	30	27	18,17	FI-GS-14S-W3-SKM
	16	630	12	65	35	16,5	50	31,5	16	32	32	30	20,12	FI-GS-16S-W3-SKM
	20	420	16	72	39	17,5	55	33,5	16	41	41	36	34,45	FI-GS-20S-W3-SKM
	25	420	20	79	44	20	59	35	16	46	46	46	49,56	FI-GS-25S-W3-SKM
	30	420	25	86	48	21,5	64	37,5	16	50	50	50	64,90	FI-GS-30S-W3-SKM
	38	420	32	91	53	22	68	37	16	65	65	60	108,30	FI-GS-38S-W3-SKM

¹ Approximate dimension in assembled condition.
² Weight excluding lock nut, cutting rings and union nuts.
³ Standard scope of delivery: Fitting body with hexagon lock nut.

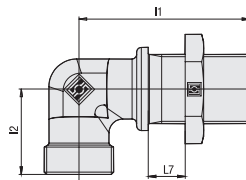
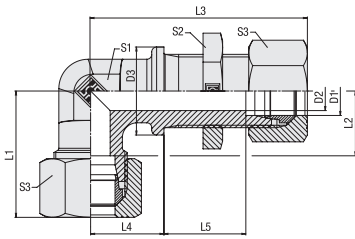
Connecting Parts

	Cutting Ring Type FI-DS	Page 28
	Soft-Sealing Cutting Ring Type FI-WDDS	Page 29
	Support Sleeve Type FI-VH	Page 31
	STAUFF Form EVO Sealing Ring Type FI-FD	Page 32
	Union Nut Type FI-M	Page 33
	37° Flared Tube Fitting Set Type FI-AB	Page 37

Spare Parts / Accessories

	Hexagon Lock Nut Type FI-SKM	Page 237
--	--	----------

Elbow Bulkhead Fittings
Type FI-WS • Series L / S



Series	Tube OD mm D1	PN bar	Dimensions mm													Weight kg ca. per 100	Ordering Codes ³
			D2	L	i1	i2	L1 ¹	L2	L3 ¹	L4	L5	L7 _{max}	S1	S2	S3		
L	6	500	4	17	48	19	27	12	56	14	27	16	12	17	14	4,88	FI-WS-06L-W3-SKM
	8	500	6	19	51	21	29	14	59	17	27	16	12	19	17	6,11	FI-WS-08L-W3-SKM
	10	500	8	22	53	22	30	15	61	18	28	16	14	22	19	7,89	FI-WS-10L-W3-SKM
	12	400	10	24	56	24	32	17	64	20	29	16	17	24	22	9,65	FI-WS-12L-W3-SKM
	15	400	12	27	61	28	36	21	69	23	31	16	19	30	27	16,31	FI-WS-15L-W3-SKM
	18	400	15	32	64	31	40	23,5	73	24	32,5	16	24	36	32	23,82	FI-WS-18L-W3-SKM
	22	250	19	36	72	35	44	27,5	81	30	34,5	16	27	41	36	30,41	FI-WS-22L-W3-SKM
	28	250	24	42	77	38	47	30,5	86	34	35,5	16	36	46	41	45,92	FI-WS-28L-W3-SKM
	35	250	30	50	86	45	56	34,5	97	39	36,5	16	41	55	50	75,00	FI-WS-35L-W3-SKM
	42	250	36	60	90	51	63	40	102	43	36	16	50	65	60	107,00	FI-WS-42L-W3-SKM
S	6	800	4	19	53	23	31	16	61	17	29	16	12	19	17	7,34	FI-WS-06S-W3-SKM
	8	800	5	22	54	24	32	17	62	18	29	16	14	22	19	10,16	FI-WS-08S-W3-SKM
	10	800	7	24	57	25	34	17,5	66	20	29,5	16	17	24	22	12,59	FI-WS-10S-W3-SKM
	12	630	8	27	59	29	38	21,5	68	21	30,5	16	17	27	24	16,05	FI-WS-12S-W3-SKM
	14	630	10	27	63	30	40	22	73	23	32	16	19	30	27	19,62	FI-WS-14S-W3-SKM
	16	630	12	30	64	33	43	24,5	74	24	31,5	16	24	32	30	24,14	FI-WS-16S-W3-SKM
	20	400	16	36	74	37	48	26,5	85	30	33,5	16	27	41	36	38,01	FI-WS-20S-W3-SKM
	25	400	20	42	81	42	54	30	93	34	35	16	36	46	46	61,10	FI-WS-25S-W3-SKM
	30	400	25	50	90	49	62	35,5	103	39	37,5	16	41	50	50	91,00	FI-WS-30S-W3-SKM
	38	400	32	60	96	57	72	41	112	43	37	16	50	65	60	138,90	FI-WS-38S-W3-SKM

¹ Approximate dimension in assembled condition.

² Weight excluding cutting rings and union nuts.

³ Standard scope of delivery: Fitting body only.

Ordering Codes

FI-WS-10*L*-W3*-MS

* Elbow Bulkhead Fitting	FI-WS
* Outside Tube Diameter D1 (in mm)	-10
* Series	Light Series L Heavy Series S
* Material Code	Steel, zinc/nickel-plated -W3
Please contact STAUFF for alternative materials and surface finishings.	
* Assembling / Kitting	Fitting body only —
	Fitting body supplied with hexagon lock nut -SKM
	Fitting body supplied with cutting rings and union nuts -MS
	Fitting body supplied with soft-sealing cutting rings and union nuts -MSV

Connecting Parts

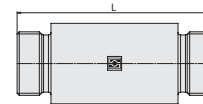
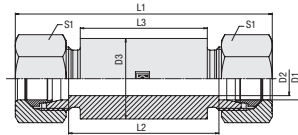
	Cutting Ring Type FI-DS	Page 28
	Soft-Sealing Cutting Ring Type FI-WDDS	Page 29
	Support Sleeve Type FI-VH	Page 31
	STAUFF Form EVO Sealing Ring Type FI-FD	Page 32
	Union Nut Type FI-M	Page 33
	37° Flared Tube Fitting Set Type FI-AB	Page 37

Spare Parts / Accessories

	Hexagon Lock Nut Type FI-SKM	Page 237
--	---------------------------------	----------

E

Straight Bulkhead Weld Fitting Type FI-ES ▪ Series L / S



E

Ordering Codes

FI-ES-10*L*-W159*-MS

* Straight Bulkhead Weld Fitting	FI-ES
* Outside Tube Diameter D1 (in mm)	-10
* Series	Light Series L Heavy Series S
* Material Code	Steel, phosphated -W2 Fitting body: Steel, phosphated -W159 Connecting parts: Steel, zinc/nickel-plated
Please contact STAUFF for alternative materials and surface finishings.	
* Assembling / Kitting	Fitting body only — Fitting body supplied with cutting rings and union nuts -MS Fitting body supplied with soft-sealing cutting rings and union nuts -MSV

Series	Tube OD mm D1	PN bar	Dimensions mm							Weight kg ca. per 100	Ordering Codes ³
			D2	D3	L	L1 ¹	L2	L3	S1		
L	6	500	4	18	70	85	56	50	14	10,33	FI-ES-06L-W2
	8	500	6	20	70	85	56	50	17	12,21	FI-ES-08L-W2
	10	500	8	22	72	87	58	50	19	14,30	FI-ES-10L-W2
	12	400	10	25	72	87	58	50	22	17,75	FI-ES-12L-W2
	15	400	12	28	84	100	70	60	27	26,69	FI-ES-15L-W2
	18	400	15	32	84	101	69	60	32	33,60	FI-ES-18L-W2
	22	250	19	36	88	105	73	60	36	39,92	FI-ES-22L-W2
	28	250	24	40	88	106	73	60	41	45,18	FI-ES-28L-W2
	35	250	30	50	92	114	71	60	50	72,80	FI-ES-35L-W2
	42	250	36	60	92	115	70	60	60	100,60	FI-ES-42L-W2
S	6	800	4	20	74	89	60	50	17	13,56	FI-ES-06S-W2
	8	800	5	22	74	89	60	50	19	16,35	FI-ES-08S-W2
	10	800	7	25	74	91	59	50	22	20,24	FI-ES-10S-W2
	12	630	8	28	74	91	59	50	24	25,17	FI-ES-12S-W2
	14	630	10	30	88	107	72	60	27	33,72	FI-ES-14S-W2
	16	630	12	35	88	107	71	60	30	44,42	FI-ES-16S-W2
	20	420	16	38	92	114	71	60	36	51,50	FI-ES-20S-W2
	25	420	20	45	96	120	72	60	46	72,50	FI-ES-25S-W2
	30	420	25	50	100	126	73	60	50	87,80	FI-ES-30S-W2
	38	420	32	60	104	133	72	60	60	125,30	FI-ES-38S-W2

¹ Approximate dimension in assembled condition.

² Weight excluding cutting rings and union nuts.

³ Standard scope of delivery: Fitting body only.

Connecting Parts

	Cutting Ring Type FI-DS	Page 28
	Soft-Sealing Cutting Ring Type FI-WDDS	Page 29
	Support Sleeve Type FI-VH	Page 31
	STAUFF Form EVO Sealing Ring Type FI-FD	Page 32
	Union Nut Type FI-M	Page 33
	37° Flared Tube Fitting Set Type FI-AB	Page 37

