



# STAUFF Connect






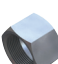


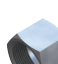
Metric tube connectors, assembly tools  
and accessories

---

Product Catalogue

Version  
10/2025

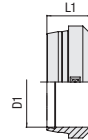


	<b>Double Edge Cutting Ring</b> FI-DS	28
	<b>Soft-Sealing Cutting Ring</b> FI-WDDS	29
	<b>Soft-Sealing Cutting Ring (Stainless Steel)</b> FI-WDDS-W5	30
	<b>Support Sleeve</b> FI-VH	31
	<b>STAUFF Form EVO Sealing Ring</b> FI-FD	32
	<b>Union Nut</b> FI-M	33
	<b>24°/37° Flared Cone Adaptor with O-Rings</b> FI-BA	34
	<b>Support Sleeve for 37° Flared Tube Fittings</b> FI-BH	35
	<b>Union Nut for 37° Flared Tube Fittings</b> FI-BM	36
	<b>37° Flared Tube Fitting Set</b> FI-AB	37

### Cutting Ring

Type FI-S (Single-Edge) ▪ Series LL

Type FI-DS (Double-Edge) ▪ Series L / S



B

#### Ordering Codes

**\*FI-DS\*-15\*L\*-W3**

\* Cutting Ring            Single-Edge Version            **FI-S**  
    Double-Edge Version            **FI-DS**

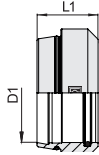
\* Outside Tube Diameter D1 (in mm)            **-15**

\* Series            Extra-Light Series            **LL**  
    Light Series            **L**  
    Heavy Series            **S**

\* Material Code            Steel, zinc/nickel-plated            **-W3**

Please contact STAUFF for alternative materials and surface finishings.

Series	Tube OD	PN	Dimensions		Weight	Ordering Codes		
	mm		mm	mm		kg ca.	Double-Edge	Single-Edge
	D1	bar	L1		per 100	Cutting Ring	Cutting Ring	
LL	4	100	6		0,04		FI-S-04LL-W3	
	6	100	7		0,08		FI-S-06LL-W3	
	8	100	7		0,1		FI-S-08LL-W3	
	10	100	7		0,12		FI-S-10LL-W3	
	12	100	7,5		0,15		FI-S-12LL-W3	
L	6	500	9,5		0,21	FI-DS-06L/S-W3		
	8	500	9,5		0,26	FI-DS-08L/S-W3		
	10	500	10		0,34	FI-DS-10L/S-W3		
	12	400	10		0,44	FI-DS-12L/S-W3		
	15	400	10		0,54	FI-DS-15L-W3		
	18	400	10		0,71	FI-DS-18L-W3		
	22	250	11,5		1,01	FI-DS-22L-W3		
	28	250	11,5		1,23	FI-DS-28L-W3		
	35	250	13,5		2,35	FI-DS-35L-W3		
	42	250	13,5		2,69	FI-DS-42L-W3		
	S	6	800	9,5		0,21	FI-DS-06L/S-W3	
		8	800	9,5		0,26	FI-DS-08L/S-W3	
10		800	10		0,34	FI-DS-10L/S-W3		
12		630	10		0,44	FI-DS-12L/S-W3		
14		630	10,5		0,63	FI-DS-14S-W3		
16		630	10,5		0,69	FI-DS-16S-W3		
20		420	12,5		1,26	FI-DS-20S-W3		
25		420	12,5		1,52	FI-DS-25S-W3		
30		420	13,5		2,06	FI-DS-30S-W3		
38		420	13,5		2,54	FI-DS-38S-W3		

Soft-Sealing Cutting Ring  
 Type FI-WDDS • Series L / S


B

Series	Tube OD mm	PN bar	Dimensions mm		Weight kgca. per 100	Ordering Codes
			D1	L1		Soft-Sealing Cutting Ring
L	6	500	8,8		0,19	FI-WDDS-06L/S-V-W3
	8	500	8,8		0,24	FI-WDDS-08L/S-V-W3
	10	500	9,8		0,35	FI-WDDS-10L/S-V-W3
	12	400	9,8		0,41	FI-WDDS-12L/S-V-W3
	15	400	10,2		0,66	FI-WDDS-15L-V-W3
	18	400	10,2		0,82	FI-WDDS-18L-V-W3
	22	250	11,5		1,06	FI-WDDS-22L-V-W3
	28	250	11,5		1,28	FI-WDDS-28L-V-W3
	35	250	13,5		2,36	FI-WDDS-35L-V-W3
	42	250	13,5		2,75	FI-WDDS-42L-V-W3
S	6	800	8,8		0,19	FI-WDDS-06L/S-V-W3
	8	800	8,8		0,24	FI-WDDS-08L/S-V-W3
	10	800	9,8		0,35	FI-WDDS-10L/S-V-W3
	12	630	9,8		0,41	FI-WDDS-12L/S-V-W3
	14	630	10,2		0,73	FI-WDDS-14S-V-W3
	16	630	10,3		0,83	FI-WDDS-16S-V-W3
	20	420	12,5		1,28	FI-WDDS-20S-V-W3
	25	420	12,5		1,58	FI-WDDS-25S-V-W3
	30	420	13,5		2,41	FI-WDDS-30S-V-W3
	38	420	13,5		3,00	FI-WDDS-38S-V-W3

## Ordering Codes

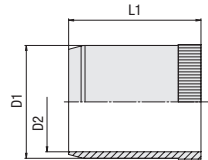
**\*FI-WDDS\*-15\*L\*-V\*-W3**

* Soft-Sealing Cutting Ring		FI-WDDS
* Outside Tube Diameter D1 (in mm)		-15
* Series	Light Series	L
	Heavy Series	S
* Seal Material	FKM (Viton®)	-V
* Material Code	Steel, zinc/nickel-plated	-W3

Please contact STAUFF for alternative materials and surface finishings.

Standard seal material is FKM (Viton®).



Support Sleeve  
Type FI-VH


B

Dimensions mm for Tube	D1	D2	L1	Weight kg ca. per 100	Ordering Codes
6 x 0,5	5	3,6	12,5	0,09	FI-VH-6x0.5-W69
6 x 0,75	4,5	3,1	12,5	0,08	FI-VH-6x0.75-W69
6 x 1	4	2,6	15,5	0,08	FI-VH-6x1-W69
8 x 0,75	6,5	5,1	12,5	0,12	FI-VH-8x0.75-W69
8 x 1	6	4,6	15,5	0,13	FI-VH-8x1-W69
10 x 0,75	8,5	7,1	16,5	0,21	FI-VH-10x0.75-W69
10 x 1	8	6,6	16,5	0,19	FI-VH-10x1-W69
10 x 1,5	7	5,6	17	0,17	FI-VH-10x1.5-W69
12 x 0,75	10,5	9,3	16,5	0,24	FI-VH-12x0.75-W69
12 x 1	10	8,6	16,5	0,24	FI-VH-12x1-W69
12 x 1,5	9	7,6	16,5	0,22	FI-VH-12x1.5-W69
14 x 1	12	10,2	18	0,42	FI-VH-14x1-W69
15 x 1	13	11,2	17	0,43	FI-VH-15x1-W69
15 x 1,5	12	10,2	17	0,38	FI-VH-15x1.5-W69
18 x 1	16	14,2	17,5	0,57	FI-VH-18x1-W69
18 x 1,5	15	13,2	17,5	0,52	FI-VH-18x1.5-W69
20 x 1	18	16,2	22	0,80	FI-VH-20x1-W69
22 x 1	20	18,2	18	0,74	FI-VH-22x1-W69
22 x 1,5	19	17,2	18	0,71	FI-VH-22x1.5-W69
25 x 1	23	21,2	23,5	1,13	FI-VH-25x1-W69
25 x 1,5	22	20,2	23,5	1,06	FI-VH-25x1.5-W69
28 x 1	26	24,2	23,5	1,28	FI-VH-28x1-W69
28 x 1,5	25	23,2	23,5	1,20	FI-VH-28x1.5-W69
28 x 2	24	22,2	23,5	1,18	FI-VH-28x2-W69
35 x 1	33	30,8	23,5	1,99	FI-VH-35x1-W69
35 x 1,5	32	29,8	23,5	1,94	FI-VH-35x1.5-W69
35 x 2	31	28,8	23,5	1,84	FI-VH-35x2-W69
42 x 1,5	39	36,8	23,5	2,18	FI-VH-42x1.5-W69
42 x 2	38	35,8	23,5	2,22	FI-VH-42x2-W69

## Ordering Codes

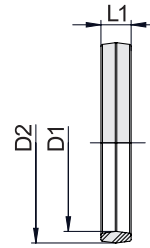
**\*FI-VH\*-10\*x1.5\*-W69**

* Support Sleeve	FI-VH
* Outside Tube Diameter (in mm)	-10
* Wall Thickness (in mm)	x1.5
* Material Code	Brass -W69

Please contact STAUFF for alternative materials and surface finishings.

**STAUFF Form EVO Sealing Ring**  
**Type FI-FD • Series L / S**

**B**



**Ordering Codes**

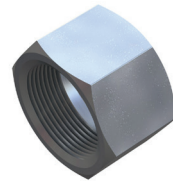
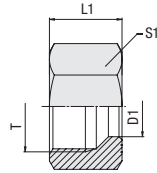
**\*FI-FD\*-15\*L\*-V90**

- \* STAUFF Form EVO Sealing Ring **FI-FD**
- \* Outside Tube Diameter D1 (in mm) **-15**
- \* Series **L**  
**S**
- Light Series
- Heavy Series
- \* Seal Material **-V90**  
**FKM (Viton®) 90 Shore**

Please contact STAUFF for alternative materials and surface finishings.

Series	Tube OD	PN	Dimensions		Weight	Ordering Codes
	mm		mm	mm		
	D1	bar	D2	L1	per 100	
<b>L</b>	6	500	7,8	2,6	0,01	FI-FD-06L/S-V90
	8	500	9,8	2,6	0,01	FI-FD-08L/S-V90
	10	500	12	2,8	0,02	FI-FD-10L/S-V90
	12	400	14	2,8	0,02	FI-FD-12L/S-V90
	15	400	17	2,8	0,03	FI-FD-15L-V90
	18	400	20	2,8	0,03	FI-FD-18L-V90
	22	250	24	2,8	0,04	FI-FD-22L-V90
	28	250	30	2,8	0,05	FI-FD-28L-V90
	35	250	37,8	3,4	0,10	FI-FD-35L-V90
	42	250	44,8	3,4	0,12	FI-FD-42L-V90
<b>S</b>	6	800	7,8	2,6	0,01	FI-FD-06L/S-V90
	8	800	9,8	2,6	0,01	FI-FD-08L/S-V90
	10	800	12	2,8	0,02	FI-FD-10L/S-V90
	12	630	14	2,8	0,02	FI-FD-12L/S-V90
	16	630	18	2,8	0,03	FI-FD-16S-V90
	20	420	22,6	3,4	0,05	FI-FD-20S-V90
	25	420	27,6	3,4	0,07	FI-FD-25S-V90
	30	420	32,8	3,4	0,09	FI-FD-30S-V90
	38	420	40,8	3,4	0,11	FI-FD-38S-V90

Standard seal material is FKM (Viton®).

Union Nut  
 Type FI-M ▪ Series LL / L / S


B

Series	Tube OD mm	PN bar	Dimensions mm			Weight kg ca. per 100	Ordering Codes
			Thread T	L1	S1		
LL	4	100	M 8 x 1	11	10	0,40	FI-M-04LL-W3
	6	100	M 10 x 1	11,5	12	0,50	FI-M-06LL-W3
	8	100	M 12 x 1	12	14	0,70	FI-M-08LL-W3
	10	100	M 14 x 1	12,5	17	1,10	FI-M-10LL-W3
	12	100	M 16 x 1	13	19	1,30	FI-M-12LL-W3
L	6	500	M 12 x 1,5	14,5	14	0,90	FI-M-06L-W3
	8	500	M 14 x 1,5	14,5	17	1,40	FI-M-08L-W3
	10	500	M 16 x 1,5	15,5	19	1,70	FI-M-10L-W3
	12	400	M 18 x 1,5	15,5	22	2,40	FI-M-12L-W3
	15	400	M 22 x 1,5	17	27	4,10	FI-M-15L-W3
	18	400	M 26 x 1,5	18	32	6,00	FI-M-18L-W3
	22	250	M 30 x 2	20	36	8,00	FI-M-22L-W3
	28	250	M 36 x 2	22	41	14,20	FI-M-28L-W3
	35	250	M 45 x 2	25	50	19,80	FI-M-35L-W3
	42	250	M 52 x 2	25	60	22,00	FI-M-42L-W3
	S	6	800	M 14 x 1,5	16,5	17	1,70
8		800	M 16 x 1,5	16,5	19	2,00	FI-M-08S-W3
10		800	M 18 x 1,5	17,5	22	3,00	FI-M-10S-W3
12		630	M 20 x 1,5	17,5	24	3,40	FI-M-12S-W3
14		630	M 22 x 1,5	20,5	27	5,20	FI-M-14S-W3
16		630	M 24 x 1,5	20,5	30	6,50	FI-M-16S-W3
20		420	M 30 x 2	24	36	10,10	FI-M-20S-W3
25		420	M 36 x 2	27	46	19,80	FI-M-25S-W3
30		420	M 42 x 2	29	50	21,60	FI-M-30S-W3
38		420	M52 x 2	32,5	60	31,40	FI-M-38S-W3

## Ordering Codes

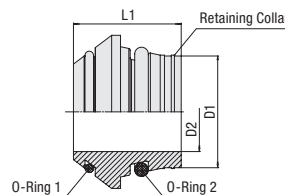
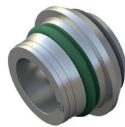
**\*FI-M\*-15\*L\*-W3**

* Union Nut		FI-M
* Outside Tube Diameter D1 (in mm)		-15
* Series	Extra-Light Series	LL
	Light Series	L
	Heavy Series	S
* Material Code	Steel, zinc/nickel-plated	-W3

Please contact STAUFF for alternative materials and surface finishings.

Union Nut: DIN 3870

**24°/37° Flared Cone Adaptor with O-Rings**  
**Type FI-BA ▪ Series L / S**



B

**Ordering Codes**

**\*FI-BA\*-10\*L\*-V\*-W3**

\* 24°/37° Flared Cone Adaptor with O-Rings **FI-BA**

\* Outside Tube Diameter D1 (in mm) **-10**

\* Series Light Series **L**  
 Heavy Series **S**

\* Seal Material FKM (Viton®) **-V**

\* Material Code Steel, zinc/nickel-plated **-W3**

Please contact STAUFF for alternative materials and surface finishings.

**Spare Parts / Accessories**

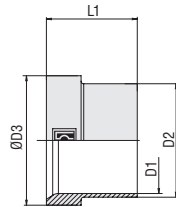


O-Ring  
 Type **O-RING**

Page 240

Series	Tube OD PN		Dimensions				Weight kg ca. per 100	Ordering Codes
	mm D1	bar	mm D2	L1	O-Ring 1	O-Ring 2		
L	6	500	3	11,5	4,4 x 0,8	4,5 x 1,5	0,28	FI-BA-06L/S-V-W3
	8	500	5	12	6,0 x 0,8	6,5 x 1,5	0,40	FI-BA-08L/S-V-W3
	10	500	6	12,5	7,5 x 0,8	8,5 x 1,5	0,65	FI-BA-10L/S-V-W3
	12	400	8	12,5	9,5 x 0,8	10,0 x 1,5	0,80	FI-BA-12L/S-V-W3
	15	400	11	12,5	12,5 x 0,8	12,5 x 2,0	1,05	FI-BA-15L-V-W3
	18	400	14	13	15,0 x 1,0	16,0 x 2,0	1,26	FI-BA-18L-V-W3
	22	250	17	14,2	18,0 x 1,0	20,0 x 2,0	2,01	FI-BA-22L-V-W3
	28	250	23	14,7	23,0 x 1,0	26,0 x 2,0	2,82	FI-BA-28L-V-W3
	35	250	28	18,5	30,0 x 1,0	32,0 x 2,5	5,86	FI-BA-35L-V-W3
	42	250	35	20,5	37,0 x 1,0	38,0 x 2,5	4,40	FI-BA-42L-V-W3
S	6	630	3	11,5	4,4 x 0,8	4,5 x 1,5	0,28	FI-BA-06L/S-V-W3
	8	630	5	12	6,0 x 0,8	6,5 x 1,5	0,40	FI-BA-08L/S-V-W3
	10	630	6	12,5	7,5 x 0,8	8,5 x 1,5	0,65	FI-BA-10L/S-V-W3
	12	630	8	12,5	9,5 x 0,8	10,0 x 1,5	0,80	FI-BA-12L/S-V-W3
	14	630	9	14	11,0 x 1,0	12,0 x 2,0	1,20	FI-BA-14S-V-W3
	16	630	11	15	12,5 x 1,0	14,0 x 2,0	1,50	FI-BA-16S-V-W3
	20	400	14	18,5	16,0 x 1,0	17,3 x 2,4	2,73	FI-BA-20S-V-W3
	25	400	19	20	20,0 x 1,0	22,3 x 2,4	3,78	FI-BA-25S-V-W3
	30	400	23	22	25,0 x 1,0	27,3 x 2,4	3,82	FI-BA-30S-V-W3
	38	400	30	26	31,47 x 1,78	35,0 x 2,5	9,15	FI-BA-38S-V-W3

Standard seal material is FKM (Viton®).  
 Flared Cone Adaptor with O-Rings: DIN 3949



## Support Sleeve for 37° Flared Tube Fittings Type FI-BH ■ Series L / S



B

Series	Tube OD		Dimensions			Weight kg ca. per 100	Ordering Codes
	mm	bar	mm	D3	L1		
	D1		D2				
L	6	500	7,6	10,2	10	0,21	FI-BH-06L/S-W3
	8	500	9,3	12,2	11	0,25	FI-BH-08L/S-W3
	10	500	11,5	14,2	12	0,37	FI-BH-10L/S-W3
	12	400	13,6	16,2	12,5	0,46	FI-BH-12L/S-W3
	15	400	17,5	20,2	13,5	0,89	FI-BH-15L-W3
	18	400	21	24,2	14	1,40	FI-BH-18L-W3
	22	250	24,2	27,8	17,5	1,59	FI-BH-22L-W3
	28	250	30,2	33,8	16,5	1,99	FI-BH-28L-W3
	35	250	38	42,7	18,5	3,70	FI-BH-35L-W3
	42	250	45	49,7	20,5	4,94	FI-BH-42L-W3
	S	6	630	7,6	10,2	10	0,21
8		630	9,3	12,2	11	0,25	FI-BH-08L/S-W3
10		630	11,5	14,2	12	0,37	FI-BH-10L/S-W3
12		630	13,6	16,2	12,5	0,46	FI-BH-12L/S-W3
14		630	17,5	20,2	14	1,20	FI-BH-14S-W3
16		630	18,5	22	16,5	1,25	FI-BH-16S-W3
20		400	24,2	27,8	17	2,39	FI-BH-20S-W3
25		400	28,5	32,8	19,5	2,98	FI-BH-25S-W3
30		400	34	39	21	4,50	FI-BH-30S-W3
38		400	42	48,5	26	7,34	FI-BH-38S-W3

### Ordering Codes

#### \*FI-BH\*-15\*L\*-W3

\* Support Sleeve for 37° Flared Tube Fittings **FI-BH**

\* Outside Tube Diameter D1 (in mm) **-15**

\* Series Light Series **L**  
Heavy Series **S**

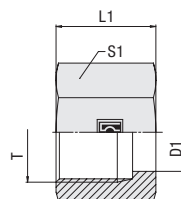
\* Material Code Steel, zinc/nickel-plated **-W3**

Please contact STAUFF for alternative materials and surface finishings.

Support Sleeve: DIN 3949

**Union Nut for 37° Flared Tube Fittings  
Type FI-BM ▪ Series L / S**

B



**Ordering Codes**

**\*FI-BM\*-15\*L\*-W3**

\* Union Nut for 37° Flared Tube Fittings

\* Outside Tube Diameter D1 (in mm)

\* Series  
Light Series  
Heavy Series

\* Material Code Steel, zinc/nickel-plated

Please contact STAUFF for alternative materials and surface finishings.

**FI-BM**

**-15**

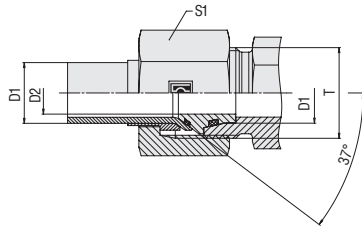
**L**

**S**

**-W3**

Series	Tube OD mm	PN bar	Dimensions mm				Weight kg ca. per 100	Ordering Codes
			Thread T	D1	L1	S1		
L	6	500	M 12 x 1,5	7,8	17	14	1,07	FI-BM-06L-W3
	8	500	M 14 x 1,5	9,5	18	17	1,82	FI-BM-08L-W3
	10	500	M 16 x 1,5	11,7	19,5	19	2,35	FI-BM-10L-W3
	12	400	M 18 x 1,5	13,8	20,5	22	3,36	FI-BM-12L-W3
	15	400	M 22 x 1,5	17,7	23	27	5,31	FI-BM-14S/15L-W3
	18	400	M 26 x 1,5	21,2	23	32	7,22	FI-BM-18L-W3
	22	250	M 30 x 2	24,4	27,5	36	10,60	FI-BM-20S/22L-W3
	28	250	M 36 x 2	30,4	27,5	41	11,47	FI-BM-28L-W3
	35	250	M 45 x 2	38,3	30	50	16,27	FI-BM-35L-W3
	42	250	M 52 x 2	45,3	34	60	30,39	FI-BM-42L-W3
	S	6	630	M 14 x 1,5	7,8	18	17	2,03
8		630	M 16 x 1,5	9,5	19	19	2,52	FI-BM-08S-W3
10		630	M 18 x 1,5	11,7	20,5	22	3,58	FI-BM-10S-W3
12		630	M 20 x 1,5	13,8	21	24	4,11	FI-BM-12S-W3
14		630	M 22 x 1,5	17,7	23	27	5,38	FI-BM-14S/15L-W3
16		630	M 24 x 1,5	18,7	26,5	30	7,87	FI-BM-16S-W3
20		400	M 30 x 2	24,4	27,5	36	10,61	FI-BM-20S/22L-W3
25		400	M 36 x 2	28,7	30,5	46	22,19	FI-BM-25S-W3
30		400	M 42 x 2	34,2	32	50	23,20	FI-BM-30S-W3
38		400	M 52 x 2	42,3	38	60	35,40	FI-BM-38S-W3

Union Nut for 37° Flared Tube Fittings: DIN 3949

**37° Flared Tube Fitting Set**  
**Type FI-AB ■ Series L / S**

**B**

Series	Tube OD		Dimensions mm	D2	S1	Weight kg ca. per 100	Ordering Codes	
	mm	bar						
	D1		Thread T					
L	6	500	M 12 x 1,5	3	14	1,74	FI-AB-06L-V-W3	
	8	500	M 14 x 1,5	5	17	2,50	FI-AB-08L-V-W3	
	10	500	M 16 x 1,5	6	19	3,38	FI-AB-10L-V-W3	
	12	400	M 18 x 1,5	8	22	4,83	FI-AB-12L-V-W3	
	15	400	M 22 x 1,5	11	27	4,66	FI-AB-15L-V-W3	
	18	400	M 26 x 1,5	14	32	10,11	FI-AB-18L-V-W3	
	22	250	M 30 x 2	17	36	14,25	FI-AB-22L-V-W3	
	28	250	M 36 x 2	23	41	16,47	FI-AB-28L-V-W3	
	35	250	M 45 x 2	28	50	25,86	FI-AB-35L-V-W3	
	42	250	M 52 x 2	35	60	42,85	FI-AB-42L-V-W3	
	S	6	630	M 14 x 1,5	3	17	2,51	FI-AB-06S-V-W3
		8	630	M 16 x 1,5	5	19	3,39	FI-AB-08S-V-W3
10		630	M 18 x 1,5	6	22	4,77	FI-AB-10S-V-W3	
12		630	M 20 x 1,5	8	24	5,63	FI-AB-12S-V-W3	
14		630	M 22 x 1,5	9	27	7,77	FI-AB-14S-V-W3	
16		630	M 24 x 1,5	11	30	10,88	FI-AB-16S-V-W3	
20		400	M 30 x 2	14	36	15,90	FI-AB-20S-V-W3	
25		400	M 36 x 2	19	46	29,34	FI-AB-25S-V-W3	
30		400	M 42 x 2	23	50	33,64	FI-AB-30S-V-W3	
38		400	M 52 x 2	30	60	52,40	FI-AB-38S-V-W3	

**Ordering Codes**
**\*FI-AB\*-15\*L\*-V\*-W3**

\* 37° Flared Tube Fitting Set

**FI-AB**

\* Outside Tube Diameter D1 (in mm)

**-15**

\* Series

Light Series

**L**

Heavy Series

**S**

\* Seal Material

FKM (Viton®)

**-V**

\* Material Code

Steel, zinc/nickel-plated

**-W3**

Please contact STAUFF for alternative materials and surface finishings.

**Spare Parts / Accessories**


O-Ring

 Type **O-RING**

Page 240

Standard seal material is FKM (Viton®).