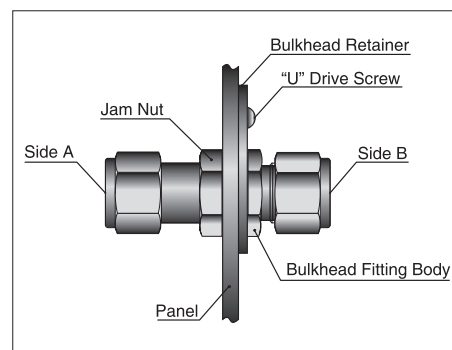
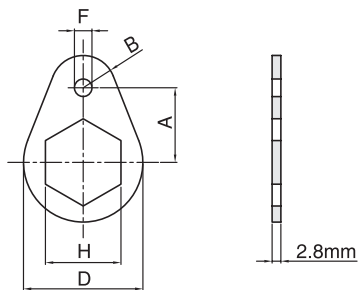


Bulkhead Retainer

SBR

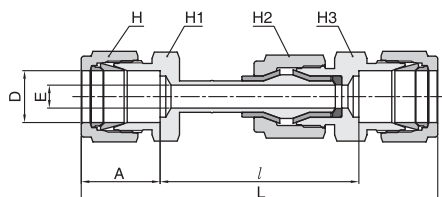


Connects fractional Tube

Part No.	S-LOK Fitting Size		A	B	D	H	F	Drill Hole Dia.	"U" Drive Screw	Drill No.
	In	mm								
SBR-1	1/16	-	9.52	3.97	15.9	7.93	3.97	3.05	6-3/8	31
SBR-2	1/8	-	12.7	5.56	20.6	12.7	3.97	3.05	6-3/8	31
SBR-3	3/16	3, 4	14.28	6.35	23.8	14.28	3.97	3.05	6-3/8	31
SBR-4	1/4	6	15.87	7.14	25.4	15.87	3.97	3.05	6-3/8	31
SBR-5	5/16	-	17.46	7.93	28.6	17.46	3.97	3.05	6-3/8	31
SBR-8M	-	8	17.46	7.93	28.6	18	3.97	3.05	6-3/8	31
SBR-6	3/8	-	19.05	8.73	31.8	19.05	3.97	3.05	6-3/8	31
SBR-10M	-	10	23.81	10.32	38.1	22	5.56	3.66	10-1/2	27
SBR-8	1/2	12	23.81	10.32	38.1	23.81	5.56	3.66	10-1/2	27
SBR-10	5/8	15, 16	25.4	10.32	41.2	26.98	5.56	3.66	10-1/2	27
SBR-12	3/4	18	26.98	11.91	46	30.16	5.56	3.66	10-1/2	27
SBR-14	7/8	-	30.2	13.49	52.4	34.93	5.56	3.66	10-1/2	27
SBR-16	1	-	32.54	13.49	58.7	41.27	5.56	3.66	10-1/2	27

Dielectric Fitting

SEU



Connects fractional Tube or Pipe

Part No.	Tube O.D. D		Pipe Thread NPT	E min	A	L	ℓ	H		H1		H2		H3	
	in	mm						in	mm	in	mm	in	mm	in	mm
SEU-4	1/4	6.35	-	4.8	15.24	95.8	65.3	9/16	14.28	1/2	12.7	7/8	22.22	13/16	30.16
SEU-6	3/8	9.52	-	7.1	16.76	99.7	65.9	11/16	17.46	5/8	15.87	7/8	22.22	13/16	30.16
SEU-6-4N	3/8	9.52	1/4	7.1	16.76	94.5	-	11/16	17.46	5/8	15.87	7/8	22.22	13/16	30.16
SEU-8	1/2	12.7	-	7.1	22.86	106	60.3	7/8	22.22	13/16	20.64	7/8	22.22	13/16	30.16
SEU-10M	-	10	-	7.1	17.2	101.5	67.3	-	19	-	18	-	22	-	22
SEU-12M	-	12	-	7.1	22.8	106.3	60.4	-	22	-	22	-	22	-	22

Technical Data & Dimensions

- Electrical resistance of insulators at 70°F (20°C): 10 x 106 at 10V (dc)
- Pressure Rating : 5,000psig (344 barg)
- Temperature Rating : -40 to 200°F (-40 to 93°C)