



# STAUFF Connect

Metric tube connectors, assembly tools  
and accessories

---

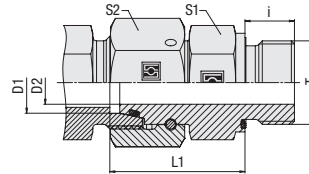
Product Catalogue

Version  
10/2025



	<b>Straight Male Stud Fitting with 24° Taper / O-Ring</b> FI-EGED	134-137
	<b>Whitworth Parallel Pipe Thread (BSPP) / Profile Sealing Ring</b> FI-EGED-...-R-WD	134
	<b>Metric Parallel Thread / Profile Sealing Ring</b> FI-EGED-...-M-WD	136
	<b>NPT Thread</b> FI-EGED-...-N	137
	<b>Straight Fitting with 24° Taper / O-Ring</b> FI-SNV	138
	<b>Straight Reducer with 24° Taper / O-Ring</b> FI-SNV	140
	<b>Straight Reducer for Tube Ends with 24° Taper / O-Ring</b> FI-REDS	144
	<b>Distance Adaptors with 24° Taper / O-Ring</b> FI-REDS	148
	<b>Adjustable Elbow (90°) with 24° Taper / O-Ring</b> FI-EWD	150
	<b>Adjustable Elbow (45°) with 24° Taper / O-Ring</b> FI-EVD	151
	<b>Adjustable Branch Tee with 24° Taper / O-Ring</b> FI-ETD	152
	<b>Adjustable Barrel Tee with 24° Taper / O-Ring</b> FI-ELD	153

**Straight Male Stud Fitting with 24° Taper / O-Ring  
Type FI-EGED-...-R-WD ▪ Series L**



**Whitworth Parallel Pipe Thread (BSPP)**

**Profile Sealing Ring**

**Ordering Codes**

**\*FI-EGED\*-10\*L\*R\*-WD\*-BV\*-W3\*-DKO**

\* Straight Male Stud Fitting with 24° Taper / O-Ring (DKO) **FI-EGED**

\* Outside Tube Diameter D1 (in mm) **-10**

\* Series Light Series (page 134) **L**  
Heavy Series (page 135) **S**

\* Thread Type Whitworth Parallel Pipe Thread (BSPP) **R**

If required, please indicate special sizes, e.g. R3/8!

\* Seal Type Profile Sealing Ring **-WD**

\* Seal Material Male Stud: NBR (Buna-N®) **-BV**  
24° Taper: FKM (Viton®)  
FKM (Viton®) **-V**

\* Material Code Steel, zinc/nickel-plated **-W3**

Please contact STAUFF for alternative materials and surface finishings.

\* Assembling / Kitting Fitting body supplied with swivel nut and O-ring **-DKO**

Series	Tube OD mm D1	PN bar	Dimensions mm						Torque N-m Thread T	Weight kg ca. per 100	Ordering Codes
			Thread T	D2	i	L1	S1	S2			
L	6	500	G 1/8	2,5	8	24,5	14	14	18	3,74	FI-EGED-06LR-WD-BV-W3-DKO
	6	500	G 1/4	2,5	12	27,5	19	14	35	5,42	FI-EGED-06LR1/4-WD-BV-W3-DKO
	8	500	G 1/8	4	8	25,5	14	17	18	3,96	FI-EGED-08LR1/8-WD-BV-W3-DKO
	8	500	G 1/4	4	12	29,5	19	17	35	5,23	FI-EGED-08LR-WD-BV-W3-DKO
	8	400	G 3/8	5	12	28,5	22	17	70	7,16	FI-EGED-08LR3/8-WD-BV-W3-DKO
	10	500	G 1/4	6	12	27,5	19	19	35	5,68	FI-EGED-10LR-WD-BV-W3-DKO
	10	400	G 3/8	6,5	12	34,5	22	19	70	7,69	FI-EGED-10LR3/8-WD-BV-W3-DKO
	10	400	G 1/2	6,5	14	36	27	19	90	13,5	FI-EGED-10LR1/2-WD-BV-W3-DKO
	12	500	G 1/4	6	12	28	19	22	35	7,02	FI-EGED-12LR1/4-WD-BV-W3-DKO
	12	400	G 3/8	8	12	34	22	22	70	9,78	FI-EGED-12LR-WD-BV-W3-DKO
	12	400	G 1/2	8	14	29,5	27	22	90	11,71	FI-EGED-12LR1/2-WD-BV-W3-DKO
	15	400	G 3/8	9	12	31,5	22	27	70	10,74	FI-EGED-15LR3/8-WD-BV-W3-DKO
	15	400	G 1/2	10	14	32	27	27	90	13,70	FI-EGED-15LR-WD-BV-W3-DKO
	15	250	G 3/4	11	16	31	32	27	180	14,89	FI-EGED-15LR3/4-WD-BV-W3-DKO
	18	400	G 1/2	13	14	31,5	27	32	90	14,86	FI-EGED-18LR-WD-BV-W3-DKO
	18	250	G 3/4	13	16	31	32	32	180	17,92	FI-EGED-18LR3/4-WD-BV-W3-DKO
	22	250	G 1/2	17	14	34,5	32	36	90	19	FI-EGED-22LR1/2-WD-BV-W3-DKO
	22	250	G 3/4	17	16	32,5	32	36	180	20,98	FI-EGED-22LR-WD-BV-W3-DKO
	22	250	G 1	17	18	34,5	41	36	310	31,66	FI-EGED-22LR1-WD-BV-W3-DKO
	28	250	G 3/4	23	16	35	36	41	180	22,99	FI-EGED-28LR3/4-WD-BV-W3-DKO
	28	250	G 1	22	18	35	41	41	310	22,78	FI-EGED-28LR-WD-BV-W3-DKO
	35	250	G 1 1/4	28	20	42,5	50	50	450	51,00	FI-EGED-35LR-WD-BV-W3-DKO
	35	250	G 1 1/2	28	22	46,5	55	50	540	61,3	FI-EGED-35LR1-1/2-WD-BV-W3-DKO
	42	250	G 1 1/4	35	20	47	55	60	450	62,8	FI-EGED-42LR1-1/4-WD-BV-W3-DKO
	42	250	G 1 1/2	34	22	46,5	55	60	540	68,60	FI-EGED-42LR-WD-BV-W3-DKO

**Spare Parts / Accessories**



O-Ring  
Type **O-RING** Page 239



Profile Sealing Ring  
Type **WDG** Page 238

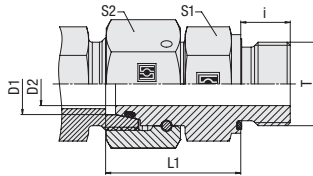
Standard seal material: See Ordering Code BV.

Male threaded studs were designed for female threaded ports in components made of steel. For applications with components made of softer mating materials (e.g. Aluminium), the use of connectors with additionally rolled male threads is recommended.

Please contact STAUFF prior to the assembly for further information.

Male stud acc. to ISO 1179-2 (Type E)  
Port acc. to ISO 1179-1

Torque recommendations for Steel mating material.

**Straight Male Stud Fitting with 24° Taper / O-Ring  
Type FI-EGED-...-R-WD ■ Series S**

**Whitworth Parallel Pipe Thread (BSPP)**
**Profile Sealing Ring**

Series	Tube OD mm D1	PN bar	Dimensions mm							Torque N-m Thread T	Weight kg ca. per 100	Ordering Codes
			Thread T	D2	i	L1	S1	S2				
S	6	800	G 1/4	2,5	12	27	19	17	55	5,55	FI-EGED-06SR-WD-BV-W3-DKO	
	8	800	G 1/4	4	12	29,5	19	19	55	6,52	FI-EGED-08SR-WD-BV-W3-DKO	
	8	800	G 3/8	4	12	32	22	19	80	8,25	FI-EGED-08SR3/8-WD-BV-W3-DKO	
	10	800	G 1/4	6	12	29,5	19	22	55	7,19	FI-EGED-10SR1/4-WD-BV-W3-DKO	
	10	800	G 3/8	6	12	32	22	22	80	9,63	FI-EGED-10SR-WD-BV-W3-DKO	
	12	630	G 1/4	5	12	33	19	24	55	9,05	FI-EGED-12SR1/4-WD-BV-W3-DKO	
	12	630	G 3/8	8	12	34	22	24	80	7,03	FI-EGED-12SR-WD-BV-W3-DKO	
	12	630	G 1/2	8	14	36	27	24	115	6,36	FI-EGED-12SR1/2-WD-BV-W3-DKO	
	14	630	G 1/2	9	14	37	27	27	115	14,39	FI-EGED-14SR-WD-BV-W3-DKO	
	16	630	G 3/8	8	12	37,5	27	30	80	16,88	FI-EGED-16SR3/8-WD-BV-W3-DKO	
	16	630	G 1/2	11	14	37	27	30	115	17,03	FI-EGED-16SR-WD-BV-W3-DKO	
	16	420	G 3/4	11	16	39,5	32	30	180	23,9	FI-EGED-16SR3/4-WD-BV-W3-DKO	
	20	420	G 1/2	12	14	40,5	27	36	115	22,47	FI-EGED-20SR1/2-WD-BV-W3-DKO	
	20	420	G 3/4	14	16	43	32	36	180	27,34	FI-EGED-20SR-WD-BV-W3-DKO	
	25	420	G 3/4	17	16	49	36	46	180	42,11	FI-EGED-25SR3/4-WD-BV-W3-DKO	
	25	420	G 1	18	18	48	41	46	310	50,20	FI-EGED-25SR-WD-BV-W3-DKO	
	30	420	G 1	20	18	50,5	41	50	310	54,7	FI-EGED-30SR1-WD-BV-W3-DKO	
	30	420	G 1 1/4	23	20	51	50	50	450	70,40	FI-EGED-30SR-WD-BV-W3-DKO	
	30	420	G 1 1/2	22	22	53,5	55	50	540	83,5	FI-EGED-30SR1-1/2-WD-BV-W3-DKO	
	38	420	G 1 1/4	30	20	56	55	60	450	92,4	FI-EGED-38SR1-1/4-WD-BV-W3-DKO	
38	420	G 1 1/2	30	22	60	55	60	540	93,50	FI-EGED-38SR-WD-BV-W3-DKO		

Standard seal material: See Ordering Code BV.

Male threaded studs were designed for female threaded ports in components made of steel. For applications with components made of softer mating materials (e.g. Aluminium), the use of connectors with additionally rolled male threads is recommended.

Please contact STAUFF prior to the assembly for further information.

Male stud acc. to ISO 1179-2 (Type E)  
Port acc. to ISO 1179-1

Torque recommendations for Steel mating material.

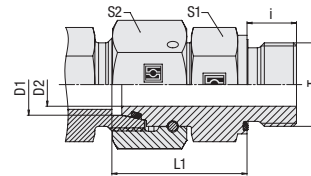
**Ordering Codes**
**\*FI-EGED\*-10\*S\*R\*-WD\*-BV\*-W3\*-DKO**

- \* Straight Male Stud Fitting with 24° Taper / O-Ring (DKO) FI-EGED
- \* Outside Tube Diameter D1 (in mm) -10
- \* Series L  
S
  - Light Series (page 134)
  - Heavy Series (page 135)
- \* Thread Type R
  - Whitworth Parallel Pipe Thread (BSPP)
- If required, please indicate special sizes, e.g. R3/8!
- \* Seal Type -WD
  - Profile Sealing Ring
- \* Seal Material -BV  
-V
  - Male Stud: NBR (Buna-N®)
  - 24° Taper: FKM (Viton®)
  - FKM (Viton®)
- \* Material Code -W3
  - Steel, zinc/nickel-plated
- Please contact STAUFF for alternative materials and surface finishings.
- \* Assembling / Kitting -DKO
  - Fitting body supplied with swivel nut and O-ring

**Spare Parts / Accessories**

- O-Ring  
Type **O-RING** Page 239
- Profile Sealing Ring  
Type **WDG** Page 238

**Straight Male Stud Fitting with 24° Taper / O-Ring**  
**Type FI-EGED-...-M-WD ▪ Series L / S**



**Profile Sealing Ring**

**Metric Parallel Thread**

**Ordering Codes**

**\*FI-EGED\*-10\*L\*M\*-WD\*-BV\*-W3\*-DKO**

\* Straight Male Stud Fitting with 24° Taper / O-Ring (DKO) **FI-EGED**

\* Outside Tube Diameter D1 (in mm) **-10**

\* Series Light Series **L**  
 Heavy Series **S**

\* Thread Type Metric Parallel Thread **M**

If required, please indicate special sizes, e.g. M12x1.5!

\* Seal Type Profile Sealing Ring **-WD**

\* Seal Material Male Stud: NBR (Buna-N®) **-BV**  
 24° Taper: FKM (Viton®) **-V**  
 FKM (Viton®)

\* Material Code Steel, zinc/nickel-plated **-W3**

Please contact STAUFF for alternative materials and surface finishings.

\* Assembling / Kitting Fitting body supplied with swivel nut and O-ring **-DKO**

Series	Tube OD mm D1	PN bar	Dimensions mm						Torque N-m Thread T	Weight kg ca. per 100	Ordering Codes	
			Thread T	D2	i	L1	S1	S2				
L	6	500	M10x1	2,5	8	24,5	14	14	18	3,76	FI-EGED-06LM-WD-BV-W3-DKO	
	8	500	M12x1,5	4	12	26,5	17	17	25	4,64	FI-EGED-08LM-WD-BV-W3-DKO	
	10	500	M14x1,5	6	12	27,5	19	19	45	5,97	FI-EGED-10LM-WD-BV-W3-DKO	
	12	400	M16x1,5	8	12	30,5	22	22	55	9,58	FI-EGED-12LM-WD-BV-W3-DKO	
	12	400	M18x1,5	8	12	31	24	22	70	9,78	FI-EGED-12LM18x1.5-WD-BV-W3-DKO	
	12	400	M22x1,5	8	14	29	27	22	125	10,12	FI-EGED-12LM22x1.5-WD-BV-W3-DKO	
	15	400	M18x1,5	10	12	31,5	24	27	70	12,62	FI-EGED-15LM-WD-BV-W3-DKO	
	15	400	M22x1,5	11	14	34	27	27	125	14,26	FI-EGED-15LM22x1.5-WD-BV-W3-DKO	
	18	400	M22x1,5	13	14	31,5	27	32	125	15,28	FI-EGED-18LM-WD-BV-W3-DKO	
	22	250	M26x1,5	17	16	32,5	32	36	180	20,75	FI-EGED-22LM-WD-BV-W3-DKO	
	28	250	M33x2	22	18	35	41	41	310	28,61	FI-EGED-28LM-WD-BV-W3-DKO	
	35	250	M42x2	28	20	42,5	50	50	450	52,30	FI-EGED-35LM-WD-BV-W3-DKO	
	42	250	M48x2	34	22	46,5	55	60	540	72,56	FI-EGED-42LM-WD-BV-W3-DKO	
	S	6	800	M12x1,5	2,5	12	27	17	17	35	4,88	FI-EGED-06SM-WD-BV-W3-DKO
		8	800	M14x1,5	4	12	29,5	19	19	55	6,59	FI-EGED-08SM-WD-BV-W3-DKO
10		800	M16x1,5	6	12	32	22	22	70	9,34	FI-EGED-10SM-WD-BV-W3-DKO	
12		630	M18x1,5	8	12	34	24	24	90	10,44	FI-EGED-12SM-WD-BV-W3-DKO	
14		630	M20x1,5	9	14	36,5	27	27	125	16,00	FI-EGED-14SM-WD-BV-W3-DKO	
16		630	M22x1,5	11	14	37	27	30	135	17,32	FI-EGED-16SM-WD-BV-W3-DKO	
20		420	M27x2	14	16	43	32	36	180	27,99	FI-EGED-20SM-WD-BV-W3-DKO	
25		420	M33x2	18	18	48	41	46	310	50,00	FI-EGED-25SM-WD-BV-W3-DKO	
30		420	M42x2	23	20	51	50	50	450	70,30	FI-EGED-30SM-WD-BV-W3-DKO	
38		420	M48x2	30	22	60	55	60	540	94,50	FI-EGED-38SM-WD-BV-W3-DKO	

**Spare Parts / Accessories**



O-Ring  
 Type **O-RING** Page 239



Profile Sealing Ring  
 Type **WDG** Page 238

Standard seal material: See Ordering Code BV.

Male threaded studs were designed for female threaded ports in components made of steel. For applications with components made of softer mating materials (e.g. Aluminium), the use of connectors with additionally rolled male threads is recommended.

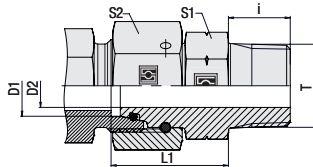
Please contact STAUFF prior to the assembly for further information.

Male stud acc. to ISO 9974-2 (Type E)

Port acc. to ISO 9974-1

Torque recommendations for Steel mating material.

**Straight Male Stud Fitting with 24° Taper / O-Ring  
Type FI-EGED-...-N • Series L / S**



NPT Thread

Series	Tube OD mm	PN bar	Dimensions mm							Weight kg ca. per 100	Ordering Codes
			Thread T	D2	i	L1	S1	S2			
L	6	315	1/8 NPT	3	10	33	14	14	3,75	FI-EGED-06L1/8N-V-W3-DKO	
	8	315	1/4 NPT	5	15	41,5	14	17	4,53	FI-EGED-08L1/4N-V-W3-DKO	
	10	315	1/4 NPT	6,5	15	41,5	17	19	5,34	FI-EGED-10L1/4N-V-W3-DKO	
	12	315	3/8 NPT	8	15	46	19	22	8,42	FI-EGED-12L3/8N-V-W3-DKO	
	15	315	1/2 NPT	11	20	50	22	27	12,06	FI-EGED-15L1/2N-V-W3-DKO	
	18	315	1/2 NPT	12	20	48	27	32	15,73	FI-EGED-18L1/2N-V-W3-DKO	
	22	160	3/4 NPT	17	20	51	30	36	20,22	FI-EGED-22L3/4N-V-W3-DKO	
	28	160	1 NPT	23	25	60	41	41	29,5	FI-EGED-28L1N-V-W3-DKO	
	35	160	1 1/4 NPT	28	26	66,5	50	50	53,2	FI-EGED-35L1-1/4N-V-W3-DKO	
	42	160	1 1/2 NPT	35	26	70	55	60	69,45	FI-EGED-42L1-1/2N-V-W3-DKO	
S	6	630	1/4 NPT	3	15	42	17	17	4,2	FI-EGED-06S1/4N-V-W3-DKO	
	8	630	1/4 NPT	4	15	43	17	19	5,94	FI-EGED-08S1/4N-V-W3-DKO	
	10	630	3/8 NPT	6,5	15	44,5	19	22	8,42	FI-EGED-10S3/8N-V-W3-DKO	
	12	630	3/8 NPT	8	15	47	19	24	9,34	FI-EGED-12S3/8N-V-W3-DKO	
	14	630	1/2 NPT	9	20	54	24	27	15,1	FI-EGED-14S1/2N-V-W3-DKO	
	16	400	1/2 NPT	11	20	54	24	27	15,63	FI-EGED-16S1/2N-V-W3-DKO	
	20	400	3/4 NPT	14	20	57	30	36	25,5	FI-EGED-20S3/4N-V-W3-DKO	
	25	400	1 NPT	18	25	67	36	46	44,71	FI-EGED-25S1N-V-W3-DKO	
	30	400	1 1/4 NPT	22	26	71	50	50	72,11	FI-EGED-30S1-1/4N-V-W3-DKO	
	38	315	1 1/2 NPT	30	26	79	55	60	95	FI-EGED-38S1-1/2N-V-W3-DKO	

**Ordering Codes**

**\*FI-EGED\*-10\*L\*1/4\*N\*-V\*-W3\*-DKO**

- \* Straight Male Stud Fitting with 24° Taper / O-Ring (DKO) FI-EGED
- \* Outside Tube Diameter D1 (in mm) -10
- \* Series Light Series L  
Heavy Series S
- \* Thread Size acc. to dimension table 1/4
- Please always indicate thread sizes, e.g. 1/4!
- \* Thread Type NPT Thread N
- \* Seal Material FKM (Viton®) -V
- \* Material Code Steel, zinc/nickel-plated -W3
- Please contact STAUFF for alternative materials and surface finishings.
- \* Assembling / Kitting Fitting body supplied with swivel nut and O-ring -DKO

Standard seal material: See Ordering Code V.

Male threaded studs were designed for female threaded ports in components made of steel. For applications with components made of softer mating materials (e.g. Aluminium), the use of connectors with additionally rolled male threads is recommended.

Please contact STAUFF prior to the assembly for further information.

Male stud acc. to ANSI/ASME B1.20.1-1983  
Port acc. to ANSI/ASME B1.20.1-1983

Suitable liquid / plastic sealant required.

Torque recommendations for Steel mating material.

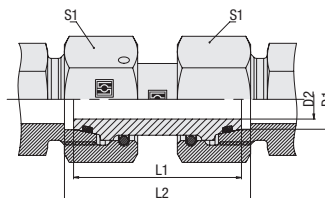
**Spare Parts / Accessories**



O-Ring  
Type **O-RING**

Page 239

**Straight Fitting with 24° Taper / O-Ring  
Type FI-SNV • Series L**



**Ordering Codes**

**\*FI-SNV\*-10\*L\*-V\*-W3\*-DKO**

- \* Straight Fitting with 24° Taper / O-Ring (DKO) **FI-SNV**
- \* Outside Tube Diameter D1 (in mm) **-10**
- \* Series **L**  
Light Series (page 138) **S**  
Heavy Series (page 139)
- \* Seal Material **-V**  
FKM (Viton®)
- \* Material Code **-W3**  
Steel, zinc/nickel-plated
- Please contact STAUFF for alternative materials and surface finishings.
- \* Assembling / Kitting **-DKO**  
Fitting body supplied with swivel nuts and O-rings
- \* Total length **-GLA**  
dimension see table **-GLB**  
dimension see table

**Spare Parts / Accessories**

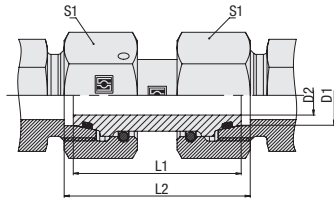


O-Ring  
Type **O-RING**

Page 239

Series	Tube OD mm D1	PN bar	Dimensions mm				Weight kg ca. per 100	Ordering Codes
			D2	L1	L2	S1		
L	6	500	3	30,8	33,5	14	2,81	FI-SNV-06L-V-W3-DKO-GLB
	6	500	3	34	36,7	14	3,82	FI-SNV-06L-V-W3-DKO
	6	500	3	36,3	39	14	2,99	FI-SNV-06L-V-W3-DKO-GLA
	8	500	5	30,8	33,5	17	4,19	FI-SNV-08L-V-W3-DKO-GLB
	8	500	5	34	36,7	17	4,29	FI-SNV-08L-V-W3-DKO
	8	500	5	36,8	39,5	17	4,45	FI-SNV-08L-V-W3-DKO-GLA
	10	500	6	32,2	34	19	5,56	FI-SNV-10L-V-W3-DKO-GLB
	10	500	6	36	37,8	19	5,78	FI-SNV-10L-V-W3-DKO
	10	500	6	37,7	39,5	19	6	FI-SNV-10L-V-W3-DKO-GLA
	12	400	8	32,2	34	22	7,5	FI-SNV-12L-V-W3-DKO-GLB
	12	400	8	36	37,8	22	7	FI-SNV-12L-V-W3-DKO
	12	400	8	39,5	41,3	22	8,04	FI-SNV-12L-V-W3-DKO-GLA
	15	400	11	39	40,8	27	12,58	FI-SNV-15L-V-W3-DKO
	15	400	11	40,7	42,5	27	12,62	FI-SNV-15L-V-W3-DKO-GLA
	18	400	13	36,2	39	32	17	FI-SNV-18L-V-W3-DKO-GLB
	18	400	13	40,5	43,3	32	17,59	FI-SNV-18L-V-W3-DKO
	18	400	13	42,2	45	32	18,16	FI-SNV-18L-V-W3-DKO-GLA
	22	250	17	41,2	44	36	24,12	FI-SNV-22L-V-W3-DKO-GLB
	22	250	17	45	47,8	36	24,91	FI-SNV-22L-V-W3-DKO
	22	250	17	46,7	49,5	36	25,4	FI-SNV-22L-V-W3-DKO-GLA
	28	250	23	46	48,8	41	27,4	FI-SNV-28L-V-W3-DKO
	28	250	23	48,7	51,5	41	28,57	FI-SNV-28L-V-W3-DKO-GLA
	35	250	28	46	52	50	43,36	FI-SNV-35L-V-W3-DKO-GLB
	35	250	28	53	59	50	45,98	FI-SNV-35L-V-W3-DKO
35	250	28	55	61	50	47,1	FI-SNV-35L-V-W3-DKO-GLA	
42	250	35	53	60	60	69,5	FI-SNV-42L-V-W3-DKO	
42	250	34	55,5	62,5	60	71,5	FI-SNV-42L-V-W3-DKO-GLA	

Standard seal material is FKM (Viton®).

**Straight Fitting with 24° Taper / O-Ring  
Type FI-SNV ▪ Series S**


Series	Tube OD	PN	Dimensions				Weight	Ordering Codes
	mm		bar	mm	L1	L2		
S	D1		D2					
	6	800	3	30,3	33	17	4,21	FI-SNV-06S-V-W3-DKO-GLB
	6	800	3	37	39,7	17	4,52	FI-SNV-06S-V-W3-DKO
	6	800	3	37,8	40,5	17	0,46	FI-SNV-06S-V-W3-DKO-GLA
	8	800	4	31,3	34	19	5,63	FI-SNV-08S-V-W3-DKO-GLB
	8	800	4	37	39,7	19	6,03	FI-SNV-08S-V-W3-DKO
	8	800	4	37,8	40,5	19	6,13	FI-SNV-08S-V-W3-DKO-GLA
	10	800	6	32,2	35	22	7,63	FI-SNV-10S-V-W3-DKO-GLB
	10	800	6	41	43,8	22	8,39	FI-SNV-10S-V-W3-DKO
	12	630	8	35,2	38	24	6,52	FI-SNV-12S-V-W3-DKO-GLB
	12	630	8	42	44,8	24	10,51	FI-SNV-12S-V-W3-DKO
	14	630	9	37,2	41	27	2,9	FI-SNV-14S-V-W3-DKO-GLB
	14	630	9	45	48,8	27	13,9	FI-SNV-14S-V-W3-DKO
	16	630	10	37,2	42	30	16,09	FI-SNV-16S-V-W3-DKO-GLB
	16	630	10	46	50,8	30	17,57	FI-SNV-16S-V-W3-DKO
	20	420	13	42	48	36	26,3	FI-SNV-20S-V-W3-DKO-GLB
	20	420	13	55	61	36	24,36	FI-SNV-20S-V-W3-DKO
	25	420	18	45,5	54,4	46	45,05	FI-SNV-25S-V-W3-DKO-GLB
	25	420	18	56,5	65,4	46	50,1	FI-SNV-25S-V-W3-DKO-GLA
	25	420	18	58	67	46	49,45	FI-SNV-25S-V-W3-DKO
	30	420	20	50	62	50	57,2	FI-SNV-30S-V-W3-DKO-GLB
	30	420	20	62	74	50	61,4	FI-SNV-30S-V-W3-DKO
	38	420	30	50	67	60	74,2	FI-SNV-38S-V-W3-DKO-GLB
	38	420	30	67	84	60	86,7	FI-SNV-38S-V-W3-DKO

Standard seal material is FKM (Viton®).

**Ordering Codes**
**\*FI-SNV\*-10\*S\*-V\*-W3\*-DKO**

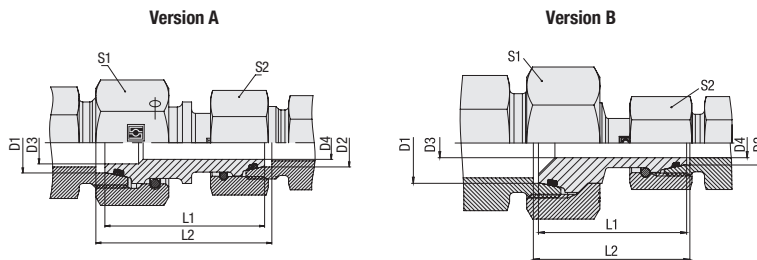
- \* Straight Fitting with 24° Taper / O-Ring (DKO) FI-SNV
  - \* Outside Tube Diameter D1 (in mm) -10
  - \* Series L  
S  
Light Series (page 138)  
Heavy Series (page 139)
  - \* Seal Material -V  
FKM (Viton®)
  - \* Material Code -W3  
Steel, zinc/nickel-plated
- Please contact STAUFF for alternative materials and surface finishings.
- \* Assembling / Kitting -DKO  
Fitting body supplied with swivel nuts and O-rings
  - \* Total length -GLA  
-GLB  
dimension see table  
dimension see table

**Spare Parts / Accessories**


O-Ring  
Type **O-RING**

Page 239

**Straight Reducer with 24° Taper / O-Ring  
Type FI-SNV • Series L**



**Ordering Codes**

**\*FI-SNV\*-10/\*08\*L\*-V\*-W3\*-DKO**

- \* Straight Reducer with 24° Taper / O-Ring (DKO) **FI-SNV**
- \* Outside Tube Diameter D1 (in mm) **-10**
- \* Outside Tube Diameter D2 (in mm) **08**
- \* Series **L**  
 Light Series (pages 140/141)  
 Heavy Series (page 142) **S**
- \* Seal Material **-V**  
 FKM (Viton®)
- \* Material Code **-W3**  
 Steel, zinc/nickel-plated
- Please contact STAUFF for alternative materials and surface finishings.
- \* Assembling / Kitting **-DKO**  
 Fitting body supplied with swivel nuts and O-rings
- \* Total length **-GLB**  
 dimension see table

Series	Tube OD		PN bar	Dimensions						Version	Weight kg ca. per 100	Ordering Codes
	mm D1	mm D2		mm D3	mm D4	mm L1	mm L2	mm S1	mm S2			
L	8 L	6 L	500	3	3	34	36,7	17	14	A	4,72	FI-SNV-08/06L-V-W3-DKO
	10 L	6 L	500	3	3	35	37,3	19	14	A	5,50	FI-SNV-10/06L-V-W3-DKO
	10 L	8 L	500	5	5	35	37,3	19	17	A	5,21	FI-SNV-10/08L-V-W3-DKO
	12 L	6 L	400	3	3	35	37,3	22	14	B	18,04	FI-SNV-12/06L-V-W3-DKO
	12 L	8 L	400	5	5	36	38,3	22	17	B	6,22	FI-SNV-12/08L-V-W3-DKO
	12 L	10 L	400	6,5	6,5	36,5	38,3	22	19	A	6,96	FI-SNV-12/10L-V-W3-DKO
	12 L	12 S	400	8	8	39	41,3	24	22	B	9,42	FI-SNV-12L/12S-V-W3-DKO
	15 L	8 L	400	5	5	36,5	38,8	27	17	B	1,96	FI-SNV-15/08L-V-W3-DKO
	15 L	10 L	400	6,5	6,5	37,5	39,3	27	19	B	4,40	FI-SNV-15/10L-V-W3-DKO
	15 L	12 L	400	8	8	37	38,8	27	22	B	11,06	FI-SNV-15/12L-V-W3-DKO-GLB
	15 L	12 L	400	8	8	44	45,8	27	22	A	11,69	FI-SNV-15/12L-V-W3-DKO
	18 L	10 L	400	6,5	6,5	38	40,3	32	19	B	12,68	FI-SNV-18/10L-V-W3-DKO
	18 L	12 L	400	8	8	38	40,3	32	22	B	13,51	FI-SNV-18/12L-V-W3-DKO
	18 L	15 L	400	11	11	42,5	44,8	32	27	A	15,38	FI-SNV-18/15L-V-W3-DKO-GLB
	18 L	15 L	400	11	11	45	47,3	32	27	A	16,60	FI-SNV-18/15L-V-W3-DKO
	18 L	16 S	400	11	11	43,5	47,3	32	30	A	17,95	FI-SNV-18L/16S-V-W3-DKO

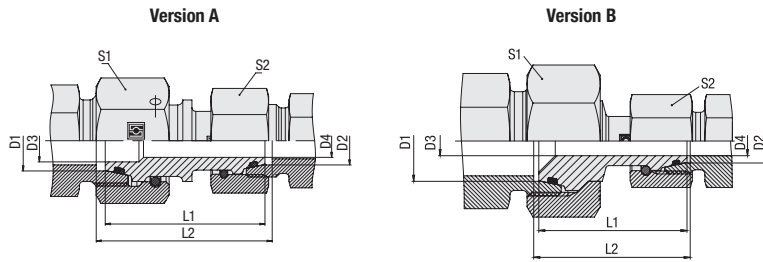
Standard seal material is FKM (Viton®).

**Spare Parts / Accessories**



O-Ring  
Type **O-RING**

Page 239



## Straight Reducer with 24° Taper / O-Ring Type FI-SNV - Series L



Series	Tube OD mm		PN bar	Dimensions mm						Version	Weight kg ca. per 100	Ordering Codes
	D1	D2		D3	D4	L1	L2	S1	S2			
L	22 L	12 L	250	8	8	40,5	42,8	36	22	B	17,52	FI-SNV-22/12L-V-W3-DKO
	22 L	15 L	250	11	11	42	44,3	36	27	B	19,83	FI-SNV-22/15L-V-W3-DKO
	22 L	18 L	250	13	13	45	47,8	36	32	A	23,35	FI-SNV-22/18L-V-W3-DKO
	22 L	20 S	250	14	14	50	54,4	36	36	A	27,82	FI-SNV-22L/20S-V-W3-DKO
	28 L	15 L	250	11	11	43	45,3	41	27	B	23,86	FI-SNV-28/15L-V-W3-DKO
	28 L	18 L	250	13	13	45	47,8	41	32	B	26,44	FI-SNV-28/18L-V-W3-DKO
	28 L	22 L	250	17	17	46	48,8	41	36	B	28,93	FI-SNV-28/22L-V-W3-DKO
	28 L	25 S	250	18	18	52,5	58,4	41	46	A	41,48	FI-SNV-28L/25S-V-W3-DKO
	35 L	18 L	250	13	13	48	52,4	50	32	B	39,52	FI-SNV-35/18L-V-W3-DKO
	35 L	22 L	250	17	17	49,5	53,9	50	36	B	41,34	FI-SNV-35/22L-V-W3-DKO
	35 L	28 L	250	23	23	50	54,4	50	41	B	40,71	FI-SNV-35/28L-V-W3-DKO
	35 L	30 S	250	22	22	61	70	50	50	A	59,77	FI-SNV-35L/30S-V-W3-DKO
	42 L	22 L	250	17	17	49,5	54,4	60	36	B	56,50	FI-SNV-42/22L-V-W3-DKO
	42 L	28 L	250	23	23	50	54,9	60	41	B	56,10	FI-SNV-42/28L-V-W3-DKO
	42 L	35 L	250	28	28	53	59,5	60	50	B	60,70	FI-SNV-42/35L-V-W3-DKO
	42 L	38 S	250	30	30	55	67	60	60	A	78,2	FI-SNV-42L/38S-V-W3-DKO

Standard seal material is FKM (Viton®).

### Ordering Codes

#### \*FI-SNV\*-10/\*08\*L\*-V\*-W3\*-DKO

- \* Straight Reducer with 24° Taper / O-Ring (DKO) FI-SNV
  - \* Outside Tube Diameter D1 (in mm) -10
  - \* Outside Tube Diameter D2 (in mm) 08
  - \* Series Light Series (pages 140/141) L  
Heavy Series (page 142) S
  - \* Seal Material FKM (Viton®) -V
  - \* Material Code Steel, zinc/nickel-plated -W3
- Please contact STAUFF for alternative materials and surface finishings.
- \* Assembling / Kitting Fitting body supplied with swivel nuts and O-rings -DKO

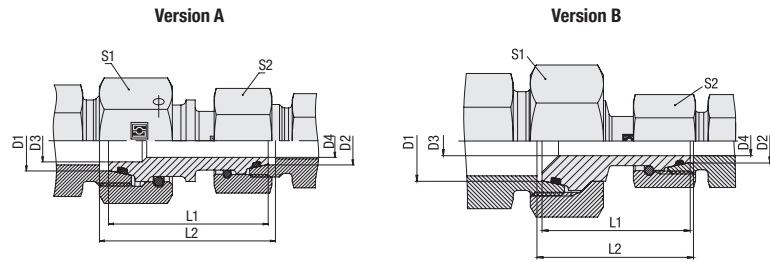
### Spare Parts / Accessories



O-Ring  
Type **O-RING**

Page 239

### Straight Reducer with 24° Taper / O-Ring Type FI-SNV ▪ Series S



#### Ordering Codes

**\*FI-SNV\*-10/\*08\*S\*-V\*-W3\*-DKO**

- \* Straight Reducer with 24° Taper / O-Ring (DKO) **FI-SNV**
- \* Outside Tube Diameter D1 (in mm) **-10**
- \* Outside Tube Diameter D2 (in mm) **08**
- \* Series **L**  
Light Series (pages 140/141)  
**S**  
Heavy Series (page 142)
- \* Seal Material **-V**  
FKM (Viton®)
- \* Material Code **-W3**  
Steel, zinc/nickel-plated
- Please contact STAUFF for alternative materials and surface finishings.
- \* Assembling / Kitting **-DKO**  
Fitting body supplied with swivel nuts and O-rings
- \* Total length **-GLB**  
dimension see table

#### Spare Parts / Accessories

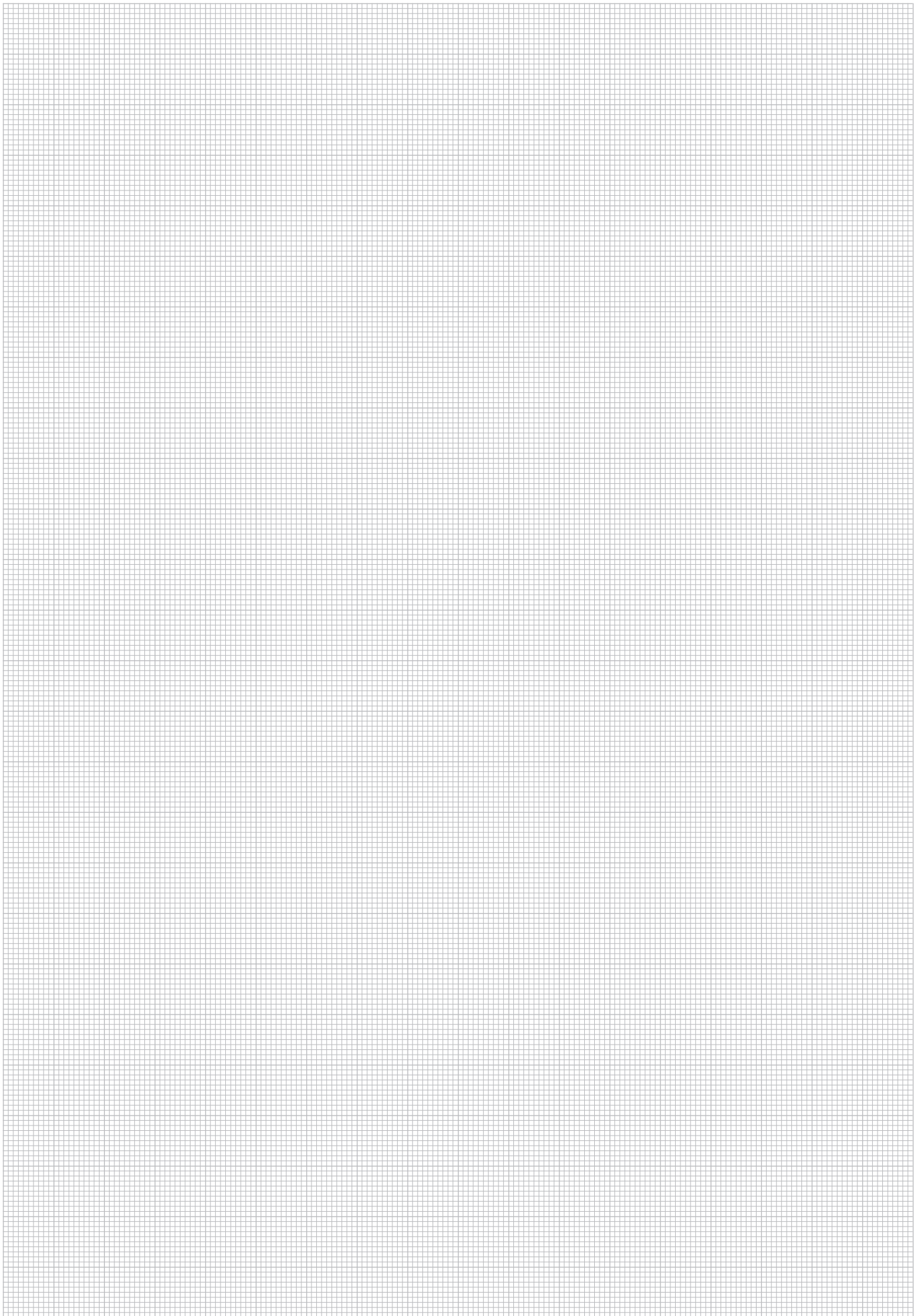


O-Ring  
Type **O-RING**

Page 239

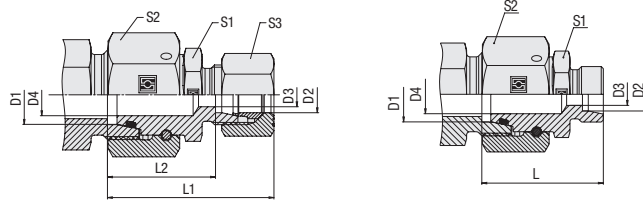
Series	Tube OD mm		PN bar	Dimensions mm						Version	Weight kg ca. per 100	Ordering Codes
	D1	D2		D3	D4	L1	L2	S1	S2			
S	6S	6L	500	3	3	35,5	38,2	17	14	A	3,70	FI-SNV-06S/06L-V-W3-DKO
	8 S	6S	800	3	3	37	39,7	19	17	A	5,43	FI-SNV-08/06S-V-W3-DKO
	8 S	8 L	500	4	4	35,5	38,2	17	19	A	5,27	FI-SNV-08S/08L-V-W3-DKO
	10 S	6 S	800	3	3	40,5	43,2	22	17	A	6,30	FI-SNV-10/06S-V-W3-DKO
	10 S	8 S	800	4	4	39	41,7	22	19	A	7,60	FI-SNV-10/08S-V-W3-DKO
	10 S	10 L	500	6,5	6,5	38,5	40,8	22	19	A	6,98	FI-SNV-10S/10L-V-W3-DKO
	12 S	6 S	630	3	3	39	41,7	24	17	B	7,79	FI-SNV-12/06S-V-W3-DKO
	12 S	8 S	630	4	4	44	46,7	24	19	A	9,42	FI-SNV-12/08S-V-W3-DKO
	12 S	10 S	630	6,5	6,5	41,5	44,3	24	22	A	9,73	FI-SNV-12/10S-V-W3-DKO
	16 S	10 S	630	6,5	6,5	43,5	47,3	30	22	B	14,11	FI-SNV-16/10S-V-W3-DKO
	16 S	12 S	630	8	8	47,5	51,3	30	24	A	15,32	FI-SNV-16/12S-V-W3-DKO
	16 S	15 L	400	11	11	42,5	45,8	30	27	A	14,66	FI-SNV-16S/15L-V-W3-DKO
	20 S	12 S	400	8	8	48,5	52,9	36	24	B	21,90	FI-SNV-20/12S-V-W3-DKO
	20 S	16 S	400	11	11	52,5	57,9	36	30	A	24,68	FI-SNV-20/16S-V-W3-DKO
	20 S	18 L	400	13	13	47,5	51,9	36	32	A	23,43	FI-SNV-20S/18L-V-W3-DKO
	25 S	16 S	400	11	11	52	58,9	46	30	A	34,02	FI-SNV-25/16S-V-W3-DKO
	25 S	18 L	400	13	13	41,5	47,5	46	32	B	36,2	FI-SNV-25S/18L-V-W3-DKO-GLB
	25 S	18 L	400	13	13	50	56,3	46	32		38,4	FI-SNV-25S/18L-V-W3-DKO
	25 S	20 S	400	14	14	58	65,5	46	36	A	39,77	FI-SNV-25/20S-V-W3-DKO
	25 S	22 L	250	17	17	57	62,9	46	36	A	39,15	FI-SNV-25S/22L-V-W3-DKO
30 S	16 S	400	11	11	54	62,4	50	30	B	47,00	FI-SNV-30/16S-V-W3-DKO	
30 S	20 S	400	14	14	58,5	67,5	50	36	B	51,00	FI-SNV-30/20S-V-W3-DKO	
30 S	25 S	400	17	17	60	70,5	50	46	A	56,80	FI-SNV-30/25S-V-W3-DKO	
30 S	28 L	250	22	22	59	66,4	50	41	A	45,5	FI-SNV-30S/28L-V-W3-DKO	
38 S	20 S	400	14	14	61	72,5	60	36	B	71,30	FI-SNV-38/20S-V-W3-DKO	
38 S	25 S	400	17	17	62,5	75,5	60	46	B	80,70	FI-SNV-38/25S-V-W3-DKO	
38 S	30 S	400	22	22	64,5	79	60	50	A	76,90	FI-SNV-38/30S-V-W3-DKO	
38 S	35 L	250	28	28	62	73,5	60	50	A	69,86	FI-SNV-38S/35L-V-W3-DKO	

Standard seal material is FKM (Viton®).



H

**Straight Reducer for Tube Ends with 24° Taper / O-Ring  
Type FI-RESDS • Series L**



**Ordering Codes**

**\*FI-RESDS\*-10/\*08\*L\*-V\*-W3\*-DKO\*-MS**

\* Straight Reducer for Tube Ends with 24° Taper / O-Ring (DKO) **FI-RESDS**

\* Outside Tube Diameter D1 (in mm) **-10**

\* Outside Tube Diameter D2 (in mm) **08**

\* Series Light Series (pages 144/145) **L**  
Heavy Series (pages 146/147) **S**

\* Seal Material FKM (Viton®) **-V**

\* Material Code Steel, zinc/nickel-plated **-W3**

Please contact STAUFF for alternative materials and surface finishings.

\* Assembling / Kitting Fitting body supplied with swivel nut and O-ring **-DKO**

Fitting body supplied with cutting ring and union nut **-MS**

Fitting body supplied with soft-sealing cutting ring and union nut **-MSV**

Series	Tube OD		PN bar	Dimensions								Weight kg ca. per 100	Ordering Codes <sup>3</sup>
	mm D1	mm D2		mm D3	mm D4	mm L	mm L1 <sup>1</sup>	mm L2	mm S1	mm S2	mm S3		
L	8	6	500	4	4	30,5	38,5	23,5	12	17	14	3,01	FI-RESDS-08/06L-V-W3-DKO
	10	6	500	4	4	32	40	25	14	19	14	3,80	FI-RESDS-10/06L-V-W3-DKO
	10	8	500	6	6	32	40	25	14	19	17	3,99	FI-RESDS-10/08L-V-W3-DKO
	10	12	400	10	6,5	34	45	27	19	19	22	5,01	FI-RESDS-10/12L-V-W3-DKO
	12	6	400	4	4	32	40	25	17	22	14	5,69	FI-RESDS-12/06L-V-W3-DKO
	12	8	400	6	6	32	40	25	17	22	17	5,53	FI-RESDS-12/08L-V-W3-DKO
	12	10	400	8	8	33	41	26	17	22	19	5,33	FI-RESDS-12/10L-V-W3-DKO
	12	15	400	12	8	34,5	44	27,5	24	22	27	7,16	FI-RESDS-12/15L-V-W3-DKO
	15	6	400	4	11	35,5	43,5	28,5	22	27	14	8,83	FI-RESDS-15/06L-V-W3-DKO
	15	8	400	6	11	35,5	44	28,5	22	27	17	9,08	FI-RESDS-15/08L-V-W3-DKO
	15	10	400	8	8	36,5	44,5	29,5	22	27	19	9,61	FI-RESDS-15/10L-V-W3-DKO
	15	12	400	10	10	36,5	44,5	29,5	22	27	22	9,25	FI-RESDS-15/12L-V-W3-DKO
	18	6	400	4	13	35	43	28	24	32	14	11,07	FI-RESDS-18/06L-V-W3-DKO
	18	8	400	6	13	35	43	28	24	32	17	7,57	FI-RESDS-18/08L-V-W3-DKO
	18	10	400	8	8	36	44	29	24	32	19	12,64	FI-RESDS-18/10L-V-W3-DKO
	18	12	400	10	10	36	44	29	24	32	22	12,24	FI-RESDS-18/12L-V-W3-DKO
	18	15	400	12	12	37	45	30	24	32	27	12,27	FI-RESDS-18/15L-V-W3-DKO
	22	6	250	4	17	39	47	32	27	36	14	16,34	FI-RESDS-22/06L-V-W3-DKO
	22	8	250	6	17	39	48	32	27	36	17	16,27	FI-RESDS-22/08L-V-W3-DKO
	22	10	250	8	17	40	49	33	27	36	19	16,33	FI-RESDS-22/10L-V-W3-DKO
	22	12	250	10	17	40	49	33	27	36	22	16,30	FI-RESDS-22/12L-V-W3-DKO
	22	15	250	12	12	41	50	34	27	36	27	19,01	FI-RESDS-22/15L-V-W3-DKO
22	18	250	15	15	41	50	33,5	27	36	32	18,13	FI-RESDS-22/18L-V-W3-DKO	
L / S	22	20	250	16	16	47,5	60	37	36	32	36	22,22	FI-RESDS-22L/20S-V-W3-DKO
	28	6	250	4	23	41	49	34	36	41	14	22,90	FI-RESDS-28/06L-V-W3-DKO
	28	8	250	6	23	41	50	34	36	41	17	20,95	FI-RESDS-28/08L-V-W3-DKO
	28	10	250	8	23	42	51	35	36	41	19	21,74	FI-RESDS-28/10L-V-W3-DKO
	28	12	250	10	23	42	51	35	36	41	22	10,22	FI-RESDS-28/12L-V-W3-DKO
	28	15	250	12	23	43	52	36	36	41	27	18,85	FI-RESDS-28/15L-V-W3-DKO
	28	18	250	15	23	43	52	35,5	36	41	32	22,50	FI-RESDS-28/18L-V-W3-DKO
	28	22	250	19	23	45	54	37,5	36	41	36	22,80	FI-RESDS-28/22L-V-W3-DKO

<sup>1</sup> Approximate dimension in assembled condition.

<sup>2</sup> Weight excluding cutting ring and union nut.

<sup>3</sup> Standard scope of delivery: Fitting body only.

Standard seal material is FKM (Viton®).

**Connecting Parts**



Cutting Ring  
Type **FI-DS** Page 28



Soft-Sealing Cutting Ring  
Type **FI-WDDS** Page 29



Support Sleeve  
Type **FI-VH** Page 31



STAUFF Form EVO Sealing Ring  
Type **FI-FD** Page 32



Union Nut  
Type **FI-M** Page 33

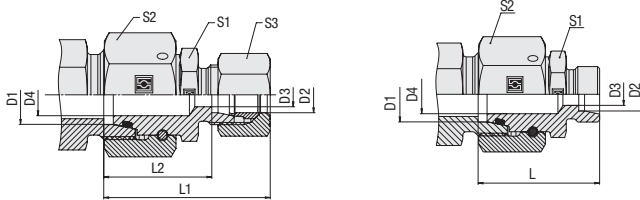


37° Flared Tube Fitting Set  
Type **FI-AB** Page 37

**Spare Parts / Accessories**



O-Ring  
Type **O-RING** Page 239

Straight Reducer for Tube Ends with 24° Taper / O-Ring  
 Type FI-RESDS • Series L


Series	Tube OD mm		PN bar	Dimensions mm							Weight kg ca. per 100	Ordering Codes <sup>3</sup>	
	D1	D2		D3	D4	L	L1 <sup>1</sup>	L2	S1	S2			S3
L	35	6	250	4	28	44	52,5	37	46	50	14	7,82	FI-RESDS-35/06L-V-W3-DKO
	35	8	250	6	28	44	52,5	37	46	50	17	35,43	FI-RESDS-35/08L-V-W3-DKO
	35	10	250	8	28	45	53,5	38	46	50	19	35,35	FI-RESDS-35/10L-V-W3-DKO
	35	12	250	10	28	45	56	38	46	50	22	33,34	FI-RESDS-35/12L-V-W3-DKO
	35	15	250	12	28	46	55,5	39	46	50	27	15,22	FI-RESDS-35/15L-V-W3-DKO
	35	18	250	15	28	46	57	38,5	46	50	32	34,32	FI-RESDS-35/18L-V-W3-DKO
	35	22	250	19	28	48	59	40,5	46	50	36	34,80	FI-RESDS-35/22L-V-W3-DKO
	35	28	250	24	24	48	59	40,5	46	50	41	38,10	FI-RESDS-35/28L-V-W3-DKO
	42	6	250	4	35	47,5	56	40,5	50	60	14	52,66	FI-RESDS-42/06L-V-W3-DKO
	42	8	250	6	35	47,5	59,5	40,5	50	60	17	52,58	FI-RESDS-42/08L-V-W3-DKO
	42	10	250	8	35	48,5	60,5	41,5	50	60	19	52,58	FI-RESDS-42/10L-V-W3-DKO
	42	12	250	10	35	48,5	60,5	41,5	50	60	22	52,60	FI-RESDS-42/12L-V-W3-DKO
	42	15	250	12	35	49,5	61,5	42,5	50	60	27	52,30	FI-RESDS-42/15L-V-W3-DKO
	42	18	250	15	35	49,5	61,5	42	50	60	32	52,00	FI-RESDS-42/18L-V-W3-DKO
	42	22	250	19	35	51,5	63,5	44	50	60	36	50,10	FI-RESDS-42/22L-V-W3-DKO
42	28	250	24	35	51,5	63,5	44	50	60	41	50,19	FI-RESDS-42/28L-V-W3-DKO	
42	35	250	30	30	53,5	65,5	43	50	60	50	55,90	FI-RESDS-42/35L-V-W3-DKO	

<sup>1</sup> Approximate dimension in assembled condition.

<sup>2</sup> Weight excluding cutting ring and union nut.

<sup>3</sup> Standard scope of delivery: Fitting body only.

Standard seal material is FKM (Viton®).

## Ordering Codes

**\*FI-RESDS\*-10/\*08\*L\*-V\*-W3\*-DKO\*-MS**

\* Straight Reducer for Tube Ends with 24° Taper / O-Ring (DKO) **FI-RESDS**

\* Outside Tube Diameter D1 (in mm) **-10**

\* Outside Tube Diameter D2 (in mm) **08**

\* Series Light Series (pages 144/145) **L**  
 Heavy Series (pages 146/147) **S**

\* Seal Material FKM (Viton®) **-V**

\* Material Code Steel, zinc/nickel-plated **-W3**

Please contact STAUFF for alternative materials and surface finishings.

\* Assembling / Kitting Fitting body supplied with swivel nut and O-ring **-DKO**

Fitting body supplied with cutting ring and union nut **-MS**

Fitting body supplied with soft-sealing cutting ring and union nut **-MSV**

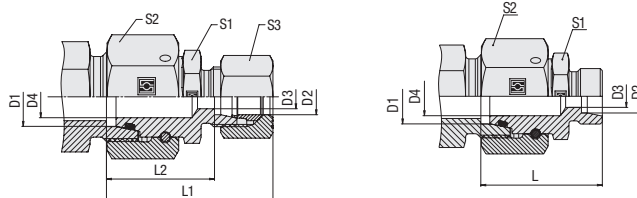
## Connecting Parts

	Cutting Ring Type <b>FI-DS</b>	Page 28
	Soft-Sealing Cutting Ring Type <b>FI-WDDS</b>	Page 29
	Support Sleeve Type <b>FI-VH</b>	Page 31
	STAUFF Form EVO Sealing Ring Type <b>FI-FD</b>	Page 32
	Union Nut Type <b>FI-M</b>	Page 33
	37° Flared Tube Fitting Set Type <b>FI-AB</b>	Page 37

## Spare Parts / Accessories

	O-Ring Type <b>O-RING</b>	Page 239
--	------------------------------	----------

## Straight Reducer for Tube Ends with 24° Taper / O-Ring Type FI-REDSO • Series S



### Ordering Codes

**\*FI-REDSO\*-10/\*08\*S\*-V\*-W3\*-DKO\*-MS**

\* Straight Reducer for Tube Ends with 24° Taper / O-Ring (DKO) **FI-REDSO**

\* Outside Tube Diameter D1 (in mm) **-10**

\* Outside Tube Diameter D2 (in mm) **08**

\* Series Light Series (pages 144/145) **L**  
Heavy Series (pages 146/147) **S**

\* Seal Material FKM (Viton®) **-V**

\* Material Code Steel, zinc/nickel-plated **-W3**

Please contact STAUFF for alternative materials and surface finishings.

\* Assembling / Kitting Fitting body supplied with swivel nut and O-ring **-DKO**

Fitting body supplied with cutting ring and union nut **-MS**

Fitting body supplied with soft-sealing cutting ring and union nut **-MSV**

Series	Tube OD mm		PN bar	Dimensions mm								Weight kg ca. per 100	Ordering Codes <sup>3</sup>
	D1	D2		D3	D4	L	L <sup>1</sup>	L2	S1	S2	S3		
S	8	6	800	4	4	34	42	27	14	19	17	4,46	FI-REDSO-08/06S-V-W3-DKO
	10	6	800	4	4	34,5	42,5	27,5	17	22	17	5,93	FI-REDSO-10/06S-V-W3-DKO
	10	8	800	5	5	34,5	42,5	27,5	17	22	19	6,07	FI-REDSO-10/08S-V-W3-DKO
	12	6	630	4	4	37	48	30	19	24	17	7,96	FI-REDSO-12/06S-V-W3-DKO
	12	8	630	5	5	37	48	30	19	24	19	8,04	FI-REDSO-12/08S-V-W3-DKO
	12	10	630	7	7	37	48	29,5	19	24	22	7,90	FI-REDSO-12/10S-V-W3-DKO
	14	6	630	4	4	38,5	47	31,5	22	27	17	10,46	FI-REDSO-14/06S-V-W3-DKO
	14	8	630	5	5	38,5	47	31,5	22	27	19	10,53	FI-REDSO-14/08S-V-W3-DKO
	14	10	630	7	7	37,5	47	30	22	27	22	10,12	FI-REDSO-14/10S-V-W3-DKO
	14	12	630	8	8	38,5	49	31	22	27	24	10,44	FI-REDSO-14/12S-V-W3-DKO
	16	6	630	4	11	39	49	32	22	30	17	10,79	FI-REDSO-16/06S-V-W3-DKO
	16	8	630	5	11	39	49	31,5	22	30	19	11,04	FI-REDSO-16/08S-V-W3-DKO
	16	10	630	7	7	39	49	31,5	22	30	22	7,67	FI-REDSO-16/10S-V-W3-DKO
	16	12	630	8	8	39	49	31,5	22	30	24	12,07	FI-REDSO-16/12S-V-W3-DKO
S / L	16	14	630	10	10	41	52	33	24	30	27	12,64	FI-REDSO-16/14S-V-W3-DKO
	16	15	400	11	11	39	48	31,5	24	30	27	11,66	FI-REDSO-16S/15L-V-W3-DKO
	20	6	420	4	14	43	54	36	27	36	17	17,16	FI-REDSO-20/06S-V-W3-DKO
	20	8	420	5	14	43	54	36	27	36	19	17,61	FI-REDSO-20/08S-V-W3-DKO
	20	10	420	7	14	43	54	35,5	27	36	22	17,49	FI-REDSO-20/10S-V-W3-DKO
	20	12	420	8	14	43	54	35,5	27	36	24	17,76	FI-REDSO-20/12S-V-W3-DKO
S / L	20	14	420	10	14	45	56,5	37	27	36	27	19,83	FI-REDSO-20/14S-V-W3-DKO
	20	15	400	12	12	43	52,5	35,5	27	36	30	18,38	FI-REDSO-20S/15L-V-W3-DKO
S / L	20	16	420	12	12	45	56	36,5	27	36	30	19,34	FI-REDSO-20/16S-V-W3-DKO
	20	18	400	14	14	43	53	35,5	27	36	32	18,10	FI-REDSO-20S/18L-V-W3-DKO

<sup>1</sup> Approximate dimension in assembled condition.

<sup>2</sup> Weight excluding cutting ring and union nut.

<sup>3</sup> Standard scope of delivery: Fitting body only.

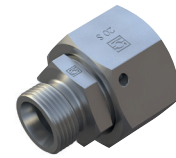
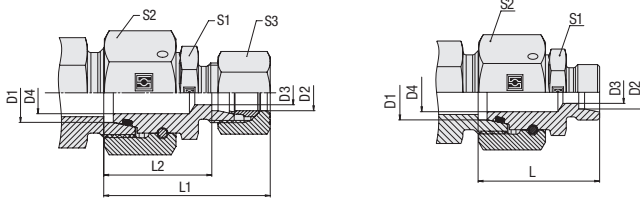
Standard seal material is FKM (Viton®).

### Connecting Parts

	Cutting Ring Type <b>FI-DS</b>	Page 28
	Soft-Sealing Cutting Ring Type <b>FI-WDDS</b>	Page 29
	Support Sleeve Type <b>FI-VH</b>	Page 31
	STAUFF Form EVO Sealing Ring Type <b>FI-FD</b>	Page 32
	Union Nut Type <b>FI-M</b>	Page 33
	37° Flared Tube Fitting Set Type <b>FI-AB</b>	Page 37

### Spare Parts / Accessories

	O-Ring Type <b>O-RING</b>	Page 239
--	------------------------------	----------

**Straight Reducer for Tube Ends with 24° Taper / O-Ring  
Type FI-RESDS ▪ Series S**


Series	Tube OD mm		PN bar	Dimensions mm									Weight kg ca. per 100	Ordering Codes <sup>3</sup>
	D1	D2		D3	D4	L	L1 <sup>1</sup>	L2	S1	S2	S3			
S	25	6	420	4	18	45,5	57,5	38,5	36	46	17	29,87	FI-RESDS-25/06S-V-W3-DKO	
	25	8	420	5	18	45,5	57,5	38,5	36	46	19	30,39	FI-RESDS-25/08S-V-W3-DKO	
	25	10	420	7	18	45,5	57,5	38,5	36	46	22	16,95	FI-RESDS-25/10S-V-W3-DKO	
	25	12	420	8	18	45,5	57,5	38,5	36	46	24	30,41	FI-RESDS-25/12S-V-W3-DKO	
	25	14	420	10	18	47,5	59	39,5	36	46	27	30,95	FI-RESDS-25/14S-V-W3-DKO	
S / L	25	16	420	12	18	47,5	59,5	39	36	46	30	30,29	FI-RESDS-25/16S-V-W3-DKO	
	25	18	400	15	18	45,5	55,5	38	36	46	32	30,54	FI-RESDS-25S/18L-V-W3-DKO	
	25	20	420	16	16	49,5	61,5	39	36	46	36	32,97	FI-RESDS-25/20S-V-W3-DKO	
	30	6	420	4	22	51	64	44	41	50	17	37,93	FI-RESDS-30/06S-V-W3-DKO	
	30	8	420	5	22	51	64	44	41	50	19	31,17	FI-RESDS-30/08S-V-W3-DKO	
	30	10	420	7	22	51	64	43,5	41	50	22	38,28	FI-RESDS-30/10S-V-W3-DKO	
	30	12	420	8	22	51	64	43,5	41	50	24	38,65	FI-RESDS-30/12S-V-W3-DKO	
	30	14	420	10	22	53	64,5	45	41	50	27	38,88	FI-RESDS-30/14S-V-W3-DKO	
	30	16	420	12	22	53	66	44,5	41	50	30	38,59	FI-RESDS-30/16S-V-W3-DKO	
	30	20	420	16	22	55	58	44,5	41	50	36	39,86	FI-RESDS-30/20S-V-W3-DKO	
	30	25	420	20	20	57	70	45	41	50	46	42,96	FI-RESDS-30/25S-V-W3-DKO	
	38	6	420	4	30	54,5	69,5	47,5	50	60	17	55,50	FI-RESDS-38/06S-V-W3-DKO	
	38	8	420	5	30	54,5	69,5	47,5	50	60	19	55,50	FI-RESDS-38/08S-V-W3-DKO	
	38	10	420	7	30	54,5	69,5	47	50	60	22	56,40	FI-RESDS-38/10S-V-W3-DKO	
	38	12	420	8	30	54,5	69,5	47	50	60	24	55,50	FI-RESDS-38/12S-V-W3-DKO	
	38	14	420	10	30	56,5	68	48,5	50	60	27	62,87	FI-RESDS-38/14S-V-W3-DKO	
	38	16	420	12	30	56,5	71,5	48	50	60	30	55,80	FI-RESDS-38/16S-V-W3-DKO	
	38	20	420	16	30	58,5	73,5	48	50	60	36	57,40	FI-RESDS-38/20S-V-W3-DKO	
	38	25	420	20	30	60,5	75,5	48,5	50	60	46	59,30	FI-RESDS-38/25S-V-W3-DKO	
	38	30	420	25	25	62,5	77,5	49	50	60	50	63,70	FI-RESDS-38/30S-V-W3-DKO	

<sup>1</sup> Approximate dimension in assembled condition.

<sup>2</sup> Weight excluding cutting ring and union nut.

<sup>3</sup> Standard scope of delivery: Fitting body only.

Standard seal material is FKM (Viton®).

**Ordering Codes**
**\*FI-RESDS\*-10/\*08\*S\*-V\*-W3\*-DKO\*-MS**

 \* Straight Reducer for Tube Ends with 24° Taper / O-Ring (DKO) **FI-RESDS**

 \* Outside Tube Diameter D1 (in mm) **-10**

 \* Outside Tube Diameter D2 (in mm) **08**

 \* Series Light Series (pages 144/145) **L**  
 Heavy Series (pages 146/147) **S**

 \* Seal Material FKM (Viton®) **-V**

 \* Material Code Steel, zinc/nickel-plated **-W3**

Please contact STAUFF for alternative materials and surface finishings.

 \* Assembling / Kitting Fitting body supplied with swivel nut and O-ring **-DKO**

 Fitting body supplied with cutting ring and union nut **-MS**

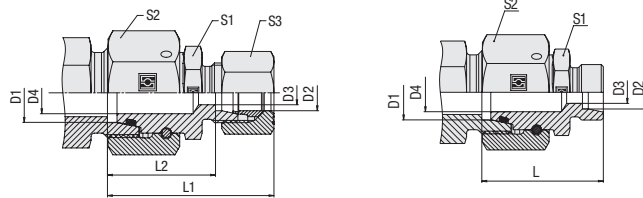
 Fitting body supplied with soft-sealing cutting ring and union nut **-MSV**
**Connecting Parts**

	Cutting Ring Type <b>FI-DS</b>	Page 28
	Soft-Sealing Cutting Ring Type <b>FI-WDDS</b>	Page 29
	Support Sleeve Type <b>FI-VH</b>	Page 31
	STAUFF Form EVO Sealing Ring Type <b>FI-FD</b>	Page 32
	Union Nut Type <b>FI-M</b>	Page 33
	37° Flared Tube Fitting Set Type <b>FI-AB</b>	Page 37

**Spare Parts / Accessories**

	O-Ring Type <b>O-RING</b>	Page 239
--	------------------------------	----------

## Distance Adaptors with 24° Taper / O-Ring Type FI-RESDS • Series L / S



### Ordering Codes

**\*FI-RESDS\*-08\*L\*-V\*-W3\*-DKO\*-MS**

\* Distance Adaptors with 24° Taper / O-Ring (DKO) **FI-RESDS**

\* Outside Tube Diameter D1/D2 (in mm) **-08**

\* Series Light Series **L**  
Heavy Series **S**

\* Seal Material FKM (Viton®) **-V**

\* Material Code Steel, zinc/nickel-plated **-W3**

Please contact STAUFF for alternative materials and surface finishings.

\* Assembling / Kitting Fitting body supplied with swivel nut and O-ring **-DKO**

Fitting body supplied with cutting ring and union nut **-MS**

Fitting body supplied with soft-sealing cutting ring and union nut **-MSV**

Series	Tube OD mm		PN bar	Dimensions mm								Weight kg ca. per 100	Ordering Codes <sup>3</sup>
	D1	D2		D3	D4	L	L <sup>1</sup>	L2	S1	S2	S3		
L	6	6	500	3	3	43	51	36	12	14	14	4,33	FI-RESDS-06L-V-W3-DKO
	8	8	500	5	5	43	51	36	14	17	17	4,63	FI-RESDS-08L-V-W3-DKO
	10	10	500	6,5	6,5	43	51	36	17	19	19	6,15	FI-RESDS-10L-V-W3-DKO
	12	12	400	8	8	43	52	36	19	22	22	7,85	FI-RESDS-12L-V-W3-DKO
	15	15	400	11	11	43	52	36	24	27	27	12,05	FI-RESDS-15L-V-W3-DKO
	18	18	400	13	13	43,5	53	36	27	32	32	15,61	FI-RESDS-18L-V-W3-DKO
	22	22	250	17	17	47,5	58,5	40	32	36	36	21,63	FI-RESDS-22L-V-W3-DKO
	28	28	250	23	23	47,5	58,5	40	41	41	41	27,45	FI-RESDS-28L-V-W3-DKO
	35	35	250	24	24	60,5	73,5	50	46	50	50	53,4	FI-RESDS-35L-V-W3-DKO
	42	42	250	35	35	71	84,5	60	55	60	60	77,7	FI-RESDS-42L-V-W3-DKO
S	6	6	800	3	3	43	51	36	14	17	17	4,91	FI-RESDS-06S-V-W3-DKO
	8	8	800	4	4	43	51	36	17	19	19	6,64	FI-RESDS-08S-V-W3-DKO
	10	10	800	6,5	6,5	43,5	53	36	19	22	22	8,18	FI-RESDS-10S-V-W3-DKO
	12	12	630	8	8	43,5	54	36	22	24	24	10,28	FI-RESDS-12S-V-W3-DKO
	14	14	630	9	9	48	59	40	24	27	27	13,75	FI-RESDS-14S-V-W3-DKO
	16	16	630	11	11	48,5	60	40	27	30	30	16,53	FI-RESDS-16S-V-W3-DKO
	20	20	420	14	14	56,5	69	46	32	36	36	26,97	FI-RESDS-20S-V-W3-DKO
	25	25	420	18	18	62	75	50	41	46	46	46,37	FI-RESDS-25S-V-W3-DKO
	30	30	420	22	22	69,5	84,5	56	46	50	50	60	FI-RESDS-30S-V-W3-DKO
	38	38	420	32	32	76	93	60	55	60	60	82,5	FI-RESDS-38S-V-W3-DKO

<sup>1</sup> Approximate dimension in assembled condition.

<sup>2</sup> Weight excluding cutting ring and union nut.

<sup>3</sup> Standard scope of delivery: Fitting body only.

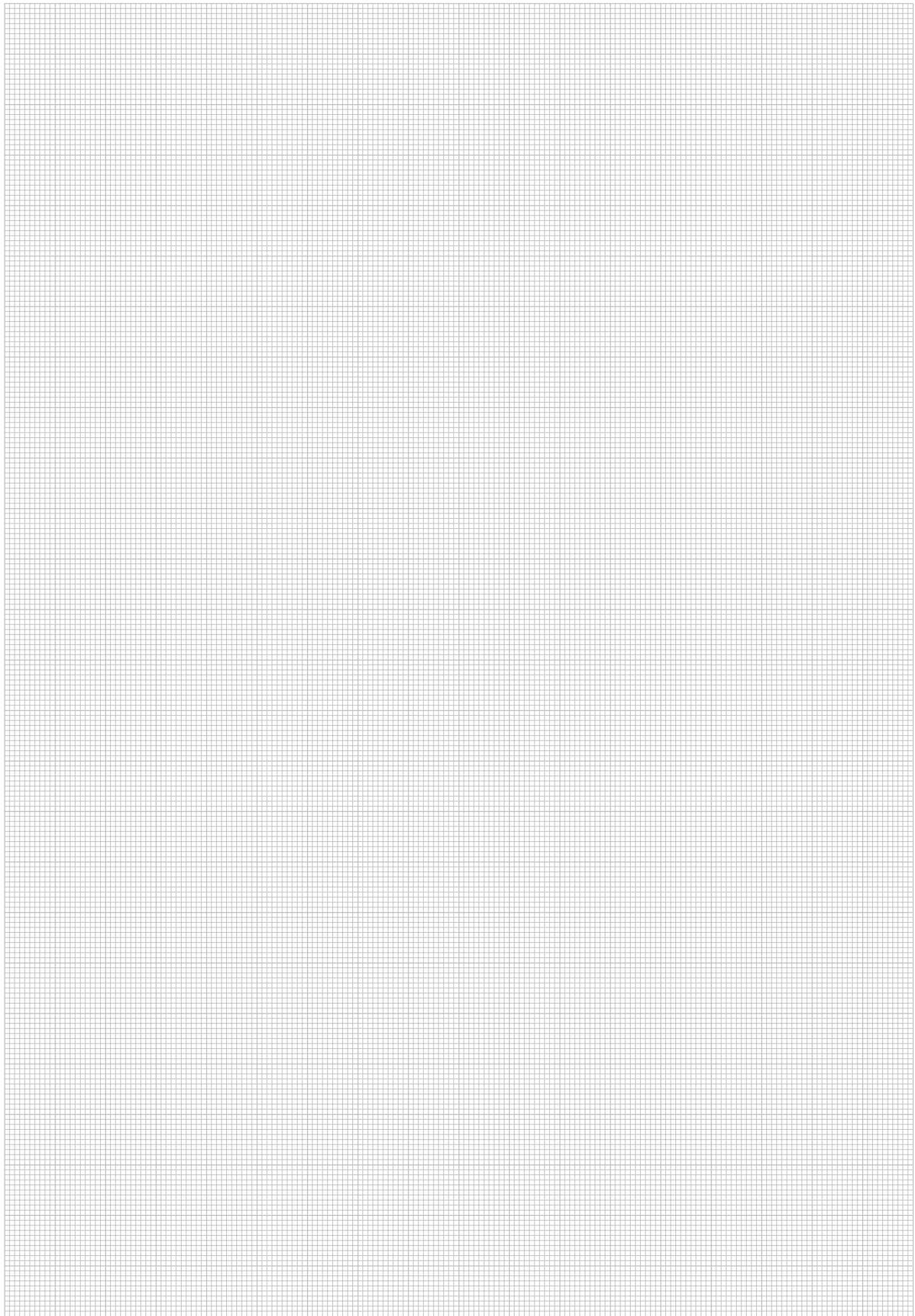
Standard seal material is FKM (Viton®).

### Connecting Parts

	Cutting Ring Type <b>FI-DS</b>	Page 28
	Soft-Sealing Cutting Ring Type <b>FI-WDDS</b>	Page 29
	Support Sleeve Type <b>FI-VH</b>	Page 31
	STAUFF Form EVO Sealing Ring Type <b>FI-FD</b>	Page 32
	Union Nut Type <b>FI-M</b>	Page 33
	37° Flared Tube Fitting Set Type <b>FI-AB</b>	Page 37

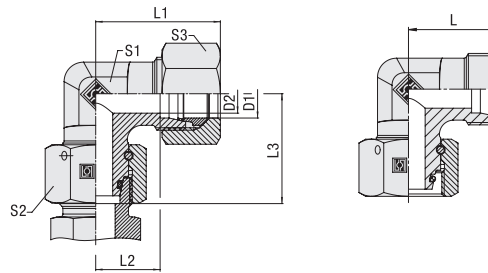
### Spare Parts / Accessories

	O-Ring Type <b>O-RING</b>	Page 239
--	------------------------------	----------



H

**Adjustable Elbow (90°) with 24° Taper / O-Ring**  
**Type FI-EWD ▪ Series L / S**



**Ordering Codes**

**\*FI-EWD\*-10\*L\*-V\*-W3\*-DKO\*-MS**

- \* Adjustable Elbow (90°) with 24° Taper / O-Ring (DKO) **FI-EWD**
- \* Outside Tube Diameter D1 (in mm) **-10**
- \* Series **L**  
**S**
- \* Seal Material **-V**  
**-MSV**
- \* Material Code **-W3**
- Please contact STAUFF for alternative materials and surface finishings.
- \* Assembling / Kitting **-DKO**  
**-MS**  
**-MSV**

Series	Tube OD mm D1	PN bar	Dimensions mm								Weight kg ca. per 100	Ordering Codes <sup>3</sup>
			D2	L	L1 <sup>1</sup>	L2	L3	S1	S2	S3		
L	6	500	4	19	27	12	26	12	14	14	4,00	FI-EWD-06L-V-W3-DKO
	8	500	6	21	29	14	27,5	12	17	17	4,03	FI-EWD-08L-V-W3-DKO
	10	500	8	22	30	15	29	14	19	19	5,36	FI-EWD-10L-V-W3-DKO
	12	400	10	24	32	17	29,5	17	22	22	7,60	FI-EWD-12L-V-W3-DKO
	15	400	12	28	36	21	32,5	19	27	27	12,50	FI-EWD-15L-V-W3-DKO
	18	400	15	31	40	23,5	35,5	24	32	32	18,23	FI-EWD-18L-V-W3-DKO
	22	400	19	35	44	27,5	38,5	27	36	36	24,57	FI-EWD-22L-V-W3-DKO
	28	250	24	38	47	30,5	41,5	36	41	41	34,95	FI-EWD-28L-V-W3-DKO
	35	250	30	45	56	34,5	51	41	50	50	56,50	FI-EWD-35L-V-W3-DKO
	42	250	36	51	63	40	56	50	60	60	85,10	FI-EWD-42L-V-W3-DKO
S	6	800	4	23	31	16	27	12	17	17	4,67	FI-EWD-06S-V-W3-DKO
	8	800	5	24	32	17	27,5	14	19	19	6,29	FI-EWD-08S-V-W3-DKO
	10	800	7	25	34	17,5	30	17	22	22	8,58	FI-EWD-10S-V-W3-DKO
	12	630	8	29	38	21,5	31	17	24	24	11,02	FI-EWD-12S-V-W3-DKO
	14	630	10	30	40	22	35	19	27	27	14,34	FI-EWD-14S-V-W3-DKO
	16	630	12	33	43	24,5	36,5	24	30	30	19,26	FI-EWD-16S-V-W3-DKO
	20	420	16	37	48	26,5	44,5	27	36	36	29,86	FI-EWD-20S-V-W3-DKO
	25	420	20	42	54	30	50	36	46	46	53,20	FI-EWD-25S-V-W3-DKO
	30	420	25	49	62	35,5	55	41	50	50	72,50	FI-EWD-30S-V-W3-DKO
	38	420	32	57	72	41	63	50	60	60	109,40	FI-EWD-38S-V-W3-DKO

<sup>1</sup> Approximate dimension in assembled condition.  
<sup>2</sup> Weight excluding cutting ring and union nut.  
<sup>3</sup> Standard scope of delivery: Fitting body only.



Typical application with a Straight Male Stud Fitting FI-GE-...

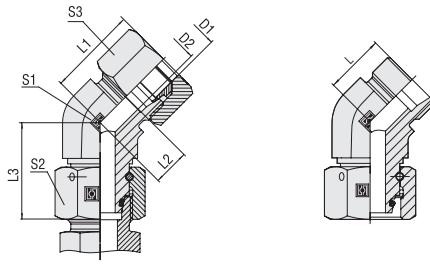
Standard seal material is FKM (Viton®).

**Connecting Parts**

- Cutting Ring  
Type **FI-DS** Page 28
- Soft-Sealing Cutting Ring  
Type **FI-WDDS** Page 29
- Support Sleeve  
Type **FI-VH** Page 31
- STAUFF Form EVO Sealing Ring  
Type **FI-FD** Page 32
- Union Nut  
Type **FI-M** Page 33
- 37° Flared Tube Fitting Set  
Type **FI-AB** Page 37

**Spare Parts / Accessories**

- O-Ring  
Type **O-RING** Page 239

**Adjustable Elbow (45°) with 24° Taper / O-Ring  
Type FI-EVD • Series L / S**


Series	Tube OD mm	PN bar	Dimensions mm									Weight kg ca. per 100	Ordering Codes <sup>3</sup>
			D2	L	L1 <sup>1</sup>	L2	L3	S1	S2	S3			
L	6	500	4	16	24	9	26	14	14	14	4,63	FI-EVD-06L-V-W3-DK0	
	8	500	6	19	27	12	27,5	14	17	17	4,72	FI-EVD-08L-V-W3-DK0	
	10	500	8	19	27	12	29	19	19	19	7,56	FI-EVD-10L-V-W3-DK0	
	12	400	10	21	29	14	29,5	19	22	22	8,66	FI-EVD-12L-V-W3-DK0	
	15	400	12	24	32	17	32,5	22	27	27	12,96	FI-EVD-15L-V-W3-DK0	
	18	400	15	24	33	17	35,5	27	32	32	20,64	FI-EVD-18L-V-W3-DK0	
	22	400	19	26	35	19	38,5	30	36	36	26,41	FI-EVD-22L-V-W3-DK0	
	28	250	24	30,5	40	23	41,5	36	41	41	34,69	FI-EVD-28L-V-W3-DK0	
	35	250	30	37	48	27	51	50	50	50	79,60	FI-EVD-35L-V-W3-DK0	
	42	250	36	37	49	26	56	50	60	60	83,20	FI-EVD-42L-V-W3-DK0	
S	6	630	4	16	24	9	27	14	17	17	4,90	FI-EVD-06S-V-W3-DK0	
	8	630	5	19	27	12	27,5	19	19	19	5,17	FI-EVD-08S-V-W3-DK0	
	10	630	7	21	30	13	30	19	22	22	9,44	FI-EVD-10S-V-W3-DK0	
	12	630	8	24	33	17	31	22	24	24	12,90	FI-EVD-12S-V-W3-DK0	
	14	400	10	24	34	16	33,5	22	27	27	14,4	FI-EVD-14S-V-W3-DK0	
	16	400	12	24	34	16	36,5	27	30	30	16,76	FI-EVD-16S-V-W3-DK0	
	20	400	16	26,5	37,5	16	44,5	30	36	36	30,72	FI-EVD-20S-V-W3-DK0	
	25	400	20	30,5	42,5	19	50	36	46	46	50,10	FI-EVD-25S-V-W3-DK0	
	30	400	25	37	50	24	55	50	50	50	92,90	FI-EVD-30S-V-W3-DK0	
	38	315	32	37	52	21	63	50	60	60	98,50	FI-EVD-38S-V-W3-DK0	

<sup>1</sup> Approximate dimension in assembled condition.

<sup>2</sup> Weight excluding cutting ring and union nut.

<sup>3</sup> Standard scope of delivery: Fitting body only.

Standard seal material is FKM (Viton®).



Typical application with a  
Straight Male Stud Fitting FI-GE-...

**Ordering Codes**
**\*FI-EVD\*-10\*L\*-V\*-W3\*-DK0\*-MS**

- \* Adjustable Elbow (45°)  
with 24° Taper / O-Ring (DKO) FI-EVD
  - \* Outside Tube Diameter D1 (in mm) -10
  - \* Series L  
S
  - \* Seal Material FKM (Viton®) -V
  - \* Material Code Steel, zinc/nickel-plated -W3
- Please contact STAUFF for alternative materials and surface finishings.
- \* Assembling / Kitting -DK0
  - Fitting body supplied with swivel nut and O-ring
  - Fitting body supplied with cutting ring and union nut -MS
  - Fitting body supplied with soft-sealing cutting ring and union nut -MSV

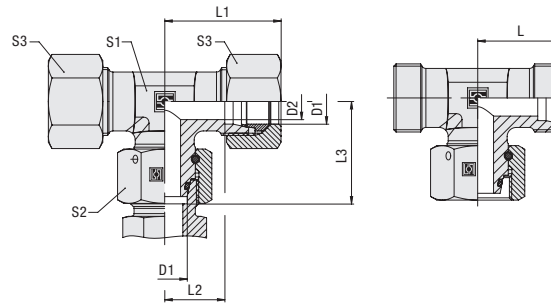
**Connecting Parts**

- Cutting Ring  
Type **FI-DS** Page 28
- Soft-Sealing Cutting Ring  
Type **FI-WDDS** Page 29
- Support Sleeve  
Type **FI-VH** Page 31
- STAUFF Form EVO Sealing Ring  
Type **FI-FD** Page 32
- Union Nut  
Type **FI-M** Page 33
- 37° Flared Tube Fitting Set  
Type **FI-AB** Page 37

**Spare Parts / Accessories**

- O-Ring  
Type **O-RING** Page 239

**Adjustable Branch Tee with 24° Taper / O-Ring (DKO)**  
**Type FI-ETD ▪ Series L / S**



**Ordering Codes**

**\*FI-ETD\*-10\*L\*-V\*-W3\*-DKO\*-MS**

- \* Adjustable Branch Tee with 24° Taper / O-Ring (DKO) **FI-ETD**
  - \* Outside Tube Diameter D1 (in mm) **-10**
  - \* Series **L**  
**S**
  - \* Seal Material **-V**  
**-MS**  
**-MSV**
  - \* Material Code **-W3**
  - \* Assembling / Kitting **-DKO**  
**-MS**  
**-MSV**
- Please contact STAUFF for alternative materials and surface finishings.
- Fitting body supplied with swivel nut and O-ring
- Fitting body supplied with cutting ring and union nut
- Fitting body supplied with soft-sealing cutting ring and union nut

Series	Tube OD mm D1	PN bar	Dimensions mm								Weight kg ca. per 100	Ordering Codes <sup>3</sup>	
			D2	L	L1 <sup>1</sup>	L2	L3	S1	S2	S3			
L	6	500	4	19	27	12	26	12	14	14	3,02	FI-ETD-06L-V-W3-DKO	
	8	500	6	21	29	14	27,5	12	17	17	4,82	FI-ETD-08L-V-W3-DKO	
	10	500	8	22	30	15	29	14	19	19	6,27	FI-ETD-10L-V-W3-DKO	
	12	400	10	24	32	17	29,5	17	22	22	8,73	FI-ETD-12L-V-W3-DKO	
	15	400	12	28	36	21	32,5	19	27	27	14,55	FI-ETD-15L-V-W3-DKO	
	18	400	15	31	40	23,5	35,5	24	32	32	20,89	FI-ETD-18L-V-W3-DKO	
	22	400	19	35	44	27,5	38,5	27	36	36	28,27	FI-ETD-22L-V-W3-DKO	
	28	250	24	38	47	30,5	41,5	36	41	41	39,85	FI-ETD-28L-V-W3-DKO	
	35	250	30	45	56	34,5	51	41	50	50	64,20	FI-ETD-35L-V-W3-DKO	
	42	250	36	51	63	40	56	50	60	60	94,90	FI-ETD-42L-V-W3-DKO	
	S	6	800	4	23	31	16	27	12	17	17	5,99	FI-ETD-06S-V-W3-DKO
		8	800	5	24	32	17	27,5	14	19	19	7,80	FI-ETD-08S-V-W3-DKO
10		800	7	25	34	17,5	30	17	22	22	10,60	FI-ETD-10S-V-W3-DKO	
12		630	8	29	38	21,5	31	17	24	24	13,63	FI-ETD-12S-V-W3-DKO	
14		630	10	30	40	22	35	19	27	27	17,37	FI-ETD-14S-V-W3-DKO	
16		630	12	33	43	24,5	36,5	24	30	30	22,95	FI-ETD-16S-V-W3-DKO	
20		420	16	37	48	26,5	44,5	27	36	36	35,51	FI-ETD-20S-V-W3-DKO	
25		420	20	42	54	30	50	36	46	46	62,40	FI-ETD-25S-V-W3-DKO	
30		420	25	49	62	35,5	55	41	50	50	85,60	FI-ETD-30S-V-W3-DKO	
38		420	32	57	72	41	63	50	60	60	128,10	FI-ETD-38S-V-W3-DKO	

<sup>1</sup> Approximate dimension in assembled condition.  
<sup>2</sup> Weight excluding cutting ring and union nut.  
<sup>3</sup> Standard scope of delivery: Fitting body only.



Typical application with a Straight Male Stud Fitting FI-GE-...

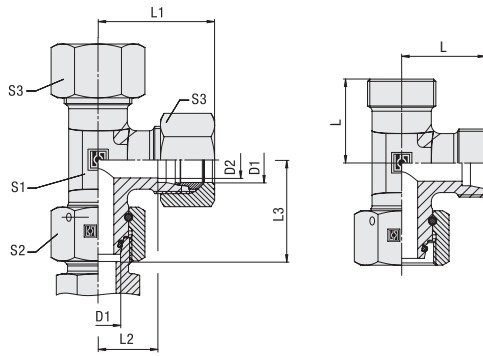
Standard seal material is FKM (Viton®).

**Connecting Parts**

- Cutting Ring  
Type **FI-DS** Page 28
- Soft-Sealing Cutting Ring  
Type **FI-WDDS** Page 29
- Support Sleeve  
Type **FI-VH** Page 31
- STAUFF Form EVO Sealing Ring  
Type **FI-FD** Page 32
- Union Nut  
Type **FI-M** Page 33
- 37° Flared Tube Fitting Set  
Type **FI-AB** Page 37

**Spare Parts / Accessories**

- O-Ring  
Type **O-RING** Page 239


**Adjustable Barrel Tee with 24° Taper / O-Ring (DKO)  
Type FI-ELD • Series L / S**


Series	Tube OD mm	PN bar	Dimensions mm							Weight kg ca. per 100	Ordering Codes <sup>3</sup>	
			D1	D2	L	L <sup>1</sup>	L2	L3	S1			S2
L	6	500	4	19	27	12	26	12	14	14	4,79	FI-ELD-06L-V-W3-DKO
	8	500	6	21	29	14	27,5	12	17	17	4,88	FI-ELD-08L-V-W3-DKO
	10	500	8	22	30	15	29	14	19	19	6,45	FI-ELD-10L-V-W3-DKO
	12	400	10	24	32	17	29,5	17	22	22	8,58	FI-ELD-12L-V-W3-DKO
	15	400	12	28	36	21	32,5	19	27	27	14,60	FI-ELD-15L-V-W3-DKO
	18	400	15	31	40	23,5	35,5	24	32	32	20,83	FI-ELD-18L-V-W3-DKO
	22	400	19	35	44	27,5	38,5	27	36	36	28,02	FI-ELD-22L-V-W3-DKO
	28	250	24	38	47	30,5	41,5	36	41	41	39,66	FI-ELD-28L-V-W3-DKO
	35	250	30	45	56	34,5	51	41	50	50	64,60	FI-ELD-35L-V-W3-DKO
	42	250	36	51	63	40	56	50	60	60	94,70	FI-ELD-42L-V-W3-DKO
S	6	800	4	23	31	16	27	12	17	17	6,04	FI-ELD-06S-V-W3-DKO
	8	800	5	24	32	17	27,5	14	19	19	8,14	FI-ELD-08S-V-W3-DKO
	10	800	7	25	34	17,5	30	17	22	22	10,53	FI-ELD-10S-V-W3-DKO
	12	630	8	29	38	21,5	31	17	24	24	13,80	FI-ELD-12S-V-W3-DKO
	14	630	10	30	40	22	35	19	27	27	20,27	FI-ELD-14S-V-W3-DKO
	16	630	12	33	43	24,5	36,5	24	30	30	23,13	FI-ELD-16S-V-W3-DKO
	20	420	16	37	48	26,5	44,5	27	36	36	35,53	FI-ELD-20S-V-W3-DKO
	25	420	20	42	54	30	50	36	46	46	61,90	FI-ELD-25S-V-W3-DKO
	30	420	25	49	62	35,5	55	41	50	50	85,10	FI-ELD-30S-V-W3-DKO
	38	420	32	57	72	41	63	50	60	60	128,00	FI-ELD-38S-V-W3-DKO

**Ordering Codes**
**\*FI-ELD\*-10\*L\*-V\*-W3\*-DKO\*-MS**

- \* Adjustable Barrel Tee with 24° Taper / O-Ring (DKO) FI-ELD
  - \* Outside Tube Diameter D1 (in mm) -10
  - \* Series L  
S
  - \* Seal Material FKM (Viton®) -V
  - \* Material Code Steel, zinc/nickel-plated -W3
- Please contact STAUFF for alternative materials and surface finishings.
- \* Assembling / Kitting -DKO
  - Fitting body supplied with swivel nut and O-ring
  - Fitting body supplied with cutting ring and union nut -MS
  - Fitting body supplied with soft-sealing cutting ring and union nut -MSV

<sup>1</sup> Approximate dimension in assembled condition.

<sup>2</sup> Weight excluding cutting ring and union nut.

<sup>3</sup> Standard scope of delivery: Fitting body only.

Standard seal material is FKM (Viton®).



Typical application with a Straight Male Stud Fitting FI-GE-...

**Connecting Parts**

- Cutting Ring  
Type **FI-DS** Page 28
- Soft-Sealing Cutting Ring  
Type **FI-WDDS** Page 29
- Support Sleeve  
Type **FI-VH** Page 31
- STAUFF Form EVO Sealing Ring  
Type **FI-FD** Page 32
- Union Nut  
Type **FI-M** Page 33
- 37° Flared Tube Fitting Set  
Type **FI-AB** Page 37

**Spare Parts / Accessories**

- O-Ring  
Type **O-RING** Page 239