

# STAUFF Clamps

Fastening systems for pipes, tubes, hoses,  
cables and other industrial components

---

Product Catalogue

Version  
10/2025





**Flat Steel U-Bolt  
with Plastic Pipe Saddle (Short) and U-Profile**  
FB / RUK

150



**Round Steel U-Bolt  
with Plastic Pipe Saddle (Short)**  
RB / RUK

152



**Round Steel U-Bolt  
with Plastic Pipe Saddle (Long)**  
RB / RUL

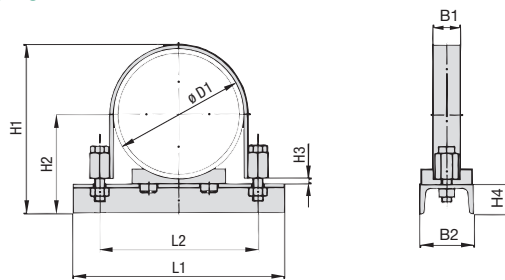
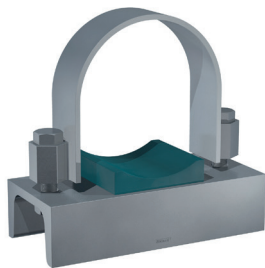
154



**Round Steel U-Bolt (DIN 3570, Type A)  
without Plastic Pipe Saddle**  
RBD

156

**Flat Steel U-Bolt with Plastic Pipe Saddle (Short) and U-Profile**  
**Type FB+RUK (To be used as Fixed Point Clamps only)**



**Flat Steel U-Bolt (type FB) with Plastic Pipe Saddle (type RUK), U-Profile and Hexagon Head Bolts**

**Ordering Codes**

**Clamp Assembly \*FB+RUK-\*48.3-\*PP-\*W56**

One clamp assembly is consisting of one Flat Steel U-Bolt (type FB), one Plastic Pipe Saddle (type RUK), one U-Profile (to DIN 1026) with two Nuts (to DIN EN ISO 4032) and two Hexagon Head Bolts (to DIN EN ISO 4014 / 4017).

- \* Clamp Assembly (as listed above) **FB+RUK**
- \* Exact outside diameter Ø D1 (mm) **48.3**
- \* Material of Pipe Saddle (see below) **PP**
- \* Material code Carbon Steel, uncoated **W1**  
 Carbon Steel, zinc-plated, blue-chromated **W33**  
 Stainless Steel V4A **W56**  
 1.4401 / 1.4571 (AISI 316 / 316 Ti)

Please note: The U-Profile (to DIN 1026) is made of Carbon Steel, uncoated.  
 Flat Steel U-Bolt and Bolts made of Stainless Steel V4A.

Please note: All items are supplied assembled.

**Standard Materials for Plastic Pipe Saddles**



**Polypropylene**  
 Colour: Green  
 Material code: **PP**



**Polyamide**  
 Colour: Black  
 Material code: **PA**

See pages 178 / 179 for material properties and technical information.

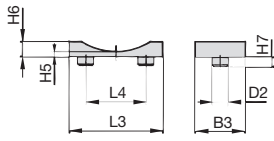
Alternative materials are available upon request. Please contact STAUFF for further information.

**Applications**

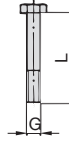
- Standing or hanging installation of pipes and tubes on beams, profiles and consoles
- Design with two threaded ends allows for ideal adaptation to suit the exact outer diameter of the pipe or tube

Diameter Nominal DN	Outside Diameter Pipe / Tube Ø D1 (mm) (in)		Nominal Bore Pipe (in)	Dimensions (mm/in)						U-Profile (DIN 1026) B2 x H4
	Flat Steel U-Bolt (Type FB)									
				L1	L2	H1	H2	H3	B1	
40	48,3	1.93	1-1/2	100	76	95	67	5	20 x 3	50 x 38
				3.94	2.99	3.74	2.64	.20	.78 x .12	1.97 x 1.50
50	57	2.28	2	115	85	103	71,5	5	20 x 3	50 x 38
				4.53	3.35	4.06	2.81	.20	.78 x .12	1.97 x 1.50
65	60,3	2.41	2	115	88	106	73,2	5	20 x 3	50 x 38
				4.53	3.46	4.17	2.88	.20	.78 x .12	1.97 x 1.50
80	76,1	3.04	2-1/2	132	104	122	81	5	20 x 3	50 x 38
				5.20	4.09	4.80	3.19	.20	.78 x .12	1.97 x 1.50
100	88,9	3.56	3	160	121	146	97,5	8	40 x 4	80 x 45
				6.30	4.76	5.75	3.84	.31	1.57 x .16	3.15 x 1.77
125	108	4.32	4	170	140	165	107	8	40 x 4	80 x 45
				6.69	5.51	6.50	4.21	.31	1.57 x .16	3.15 x 1.77
150	114,3	4.57	4	180	147	171	110	8	40 x 4	80 x 45
				7.09	5.79	6.73	4.33	.31	1.57 x .16	3.15 x 1.77
175	133	5.32	5	210	165	190	119,5	8	40 x 4	80 x 45
				8.27	6.50	7.48	4.70	.31	1.57 x .16	3.15 x 1.77
200	139,7	5.59	5	210	172	197	123	8	40 x 4	80 x 45
				8.27	6.77	7.76	4.84	.31	1.57 x .16	3.15 x 1.77
250	159	6.36	6	265	201	220	132,5	8	40 x 6	80 x 45
				1.43	7.91	8.66	5.22	.31	1.57 x .24	3.15 x 1.77
300	168,3	6.73	6	275	211	230	137	8	40 x 6	80 x 45
				1.83	8.31	9.06	5.39	.31	1.57 x .24	3.15 x 1.77
350	193,7	7.75	8	305	236	255	150	8	40 x 6	80 x 45
				12.01	9.29	1.04	5.91	.31	1.57 x .24	3.15 x 1.77
400	216	8.64	8	320	258	277	161	8	40 x 6	80 x 45
				12.60	10.16	1.91	6.34	.31	1.57 x .24	3.15 x 1.77
450	219,1	8.76	8	320	261	280	162,5	8	40 x 6	80 x 45
				12.60	1.28	11.02	6.40	.31	1.57 x .24	3.15 x 1.77
500	267	10.68	10	380	324	328	186,5	8	40 x 8	80 x 45
				14.96	12.76	12.91	7.34	.31	1.57 x .31	3.15 x 1.77
550	273	10.92	10	385	330	334	189,5	8	40 x 8	80 x 45
				15.16	12.99	13.15	7.46	.31	1.57 x .31	3.15 x 1.77
600	318	12.72	12	440	375	382	212	8	40 x 8	80 x 45
				17.32	14.76	15.04	8.35	.31	1.57 x .31	3.15 x 1.77
650	323,9	12.96	12	450	381	390	215	8	40 x 8	80 x 45
				17.72	15.00	15.35	8.46	.31	1.57 x .31	3.15 x 1.77
700	355,6	14.22	14	480	417,5	421	235	12	60 x 8	100 x 50
				18.90	16.44	16.57	9.25	.47	2.36 x .31	3.94 x 1.97
750	368	14.72	14	490	430	434	242	12	60 x 8	100 x 50
				19.29	16.93	17.09	9.53	.47	2.36 x .31	3.94 x 1.97
800	406,4	16.26	16	550	468,5	472	261	12	60 x 8	100 x 50
				21.65	18.44	18.58	10.28	.47	2.36 x .31	3.94 x 1.97
850	419	16.76	16	550	481	485	267,5	12	60 x 8	100 x 50
				21.65	18.94	19.09	10.53	.47	2.36 x .31	3.94 x 1.97
900	457	18.28	18	585	519	523	286,5	12	60 x 8	100 x 50
				23.03	20.43	20.59	11.28	.47	2.36 x .31	3.94 x 1.97
950	508	20.32	20	630	570	574	312	12	60 x 8	100 x 50
				24.80	22.44	22.60	12.28	.47	2.36 x .31	3.94 x 1.97
1000	521	20.84	20	640	583	587	319	12	60 x 8	100 x 50
				25.20	22.96	23.11	12.56	.47	2.36 x .31	3.94 x 1.97

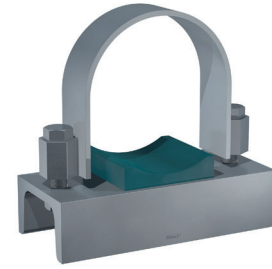
Alternative materials and surface finishings are available upon request. Contact STAUFF for further information.

**Flat Steel U-Bolt with Plastic Pipe Saddle (Short) and U-Profile  
(To be used as Fixed Point Clamps only) Type FB+RUK**

**Plastic Pipe Saddle (type RUK)**

(For size DN 40, dimension L4 is staggered by 90°)


**Hexagon Head Bolt AS**

(according to DIN EN ISO 4014 / 4017)



Diameter Nominal DN	Outside Diameter Pipe / Tube Ø D1 (mm) (in)		Nominal Bore Pipe (in)	Dimensions (mm/in)							Hexagon Head Bolt (DIN EN ISO 4014 / 4017) Thread G x L
	Plastic Pipe Saddle (type RUK)			L3	L4	B3	D2	H5	H6	H7	
40	48,3	1.93	1-1/2	24	25	35	8	5	8	5	M10 x 40
				.94	.98	1.38	.31	.20	.31	.20	
50	57	2.28	2	38	25	50	10	5	10	6	M10 x 40
				1.50	.98	1.97	.39	.20	.39	.24	
65	76,1	3.04	2-1/2	38	25	50	10	5	10	6	M10 x 40
				1.50	.98	1.97	.39	.20	.39	.24	
80	88,9	3.56	3	75	40	70	15	8	17	10	M 12 x 55
				2.95	1.57	2.76	.59	.31	.67	.39	
100	108	4.32	4	75	40	70	15	8	17	10	M 12 x 55
				2.95	1.57	2.76	.59	.31	.67	.39	
125	133	5.32	5	75	40	70	15	8	17	10	M 12 x 55
				2.95	1.57	2.76	.59	.31	.67	.39	
150	159	6.36	6	140	90	75	25	8	26	10	M 16 x 75
				5.51	3.54	2.95	.98	.31	1.02	.39	
175	193,7	7.75	8	140	90	75	25	8	26	10	M 16 x 75
				5.51	3.54	2.95	.98	.31	1.02	.39	
200	216	8.64	10	140	90	75	25	8	26	10	M 16 x 75
				5.51	3.54	2.95	.98	.31	1.02	.39	
250	273	10.92	12	140	90	75	25	8	26	10	M 20 x 80
				5.51	3.54	2.95	.98	.31	1.02	.39	
300	318	12.72	14	220	150	75	30	8	32	10	M 20 x 80
				8.66	5.91	2.95	1.18	.31	1.26	.39	
350	355,6	14.22	16	220	150	75	30	8	32	10	M 24 x 100
				8.66	5.91	2.95	1.18	.31	1.26	.39	
400	406,4	16.26	18	220	150	75	30	8	32	10	M 24 x 100
				8.66	5.91	2.95	1.18	.31	1.26	.39	
500	508	20.32	20	220	150	75	30	8	32	10	M 24 x 100
				8.66	5.91	2.95	1.18	.31	1.26	.39	
	521	20.84		220	150	75	30	8	32	10	M 24 x 100
				8.66	5.91	2.95	1.18	.31	1.26	.39	

Alternative materials and surface finishings are available upon request. Contact STAUFF for further information.

**Ordering Codes**
**Flat Steel U-Bolt** \*FB-\*A-48.3-\*W1

- \* Flat Steel U-Bolt **FB**
- \* Exact outside diameter Ø D1 (mm) **A-48.3**
- \* Material code Carbon Steel, uncoated **W1**
- Carbon Steel, zinc-plated, blue-chromated **W32**
- Stainless Steel V4A **W5**
- 1.4401 / 1.4571 (AISI 316 / 316 Ti)

**only Plastic Pipe Saddle** \*RUK-\*48.3-\*PP

- \* Plastic Pipe Saddle (Short) **RUK**
- \* Exact outside diameter Ø D1 (mm) **48.3**
- \* Material of Pipe Saddle (see below) **PP**

Please note: All items are supplied assembled.

**Standard Materials for Plastic Pipe Saddles**
**Polypropylene**  
 Colour: Green  
 Material code: **PP**
**Polyamide**  
 Colour: Black  
 Material code: **PA**

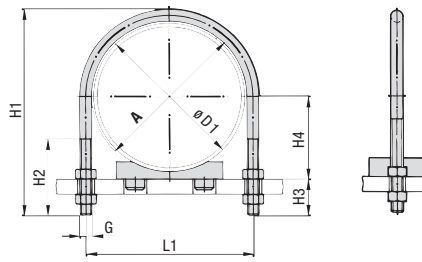
See pages 178 / 179 for material properties and technical information.

Alternative materials are available upon request. Please contact STAUFF for further information.

**Applications**

- Standing or hanging installation of pipes and tubes on beams, profiles and consoles
- Design with two threaded ends allows for ideal adaptation to suit the exact outer diameter of the pipe or tube

## Round Steel U-Bolt with Plastic Pipe Saddle (Short) Type RB+RUK



Round Steel U-Bolt (type RB) with Plastic Pipe Saddle (type RUK)

### Ordering Codes

#### Clamp Assembly \*RB+RUK-\*48.3-\*PP-\*W1

One clamp assembly is consisting of one Round Steel U-Bolt (type RB), one Plastic Pipe Saddle (type RUK) and four Nuts (to DIN EN ISO 4032).

- \* Clamp Assembly (as listed above) **RB+RUK**
- \* Exact outside diameter Ø D1 (mm) **48.3**
- \* Material of Pipe Saddle (see below) **PP**
- \* Material code Carbon Steel, uncoated **W1**  
Carbon Steel, zinc-plated, blue-chromated **W32**  
Stainless Steel V4A 1.4401 / 1.4571 (AISI 316 / 316 Ti) **W5**

Please note: All items are supplied non-assembled.

### Standard Materials for Plastic Pipe Saddles

**Polypropylene**  
Colour: Green  
Material code: **PP**

**Polyamide**  
Colour: Black  
Material code: **PA**

See pages 178 / 179 for material properties and technical information.

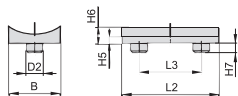
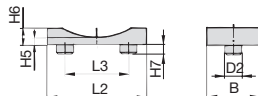
Alternative materials are available upon request. Please contact STAUFF for further information.

### Applications

- Standing or hanging installation of pipes and tubes on beams, profiles and consoles
- Design with two threaded ends allows for ideal adaptation to suit the exact outer diameter of the pipe or tube

Diameter Nominal DN	Outside Diameter Pipe / Tube Ø D1 (mm) (in)		Nominal Bore Pipe (in)	Dimensions (mm/in)						
	Round Steel U-Bolt (Type RB)			A	L1	H1	H2	H3	H4	Thread G
20	25	.98	3/4	30	40	73,5	41	30	17,5	M10
	26,9	1.06		1.18	1.57	2.89	1.61	1.18	.69	
25	30	1.18	1	38	48	81	48	30	20	M10
	33,7	1.33		1.50	1.89	3.19	1.89	1.18	.79	
32	38	1.50	1-1/4	46	56	89	48	30	24	M10
	42,4	1.69		1.81	2.20	3.50	1.89	1.18	.94	
40	44,5	1.76	1-1/2	52	62	100	55	35	27,2	M10
	48,3	1.90		2.05	2.44	3.94	2.17	1.38	1.07	
50	57	2.28	2	64	76	118	63	39	33,5	M12
	60,3	2.41		2.52	2.99	4.65	2.48	1.54	1.32	
65	76,1	3.04	2-1/2	82	94	135	77	39	43	M12
	80	3.56		3	3.23	3.70	5.31	3.03	1.54	
100	108	4.32	4	94	106	152	82	41	52,5	M12
	114,3	4.57		4.72	4.17	5.98	3.23	1.61	2.07	
125	133	5.32	5	120	136	190	105	49	62	M16
	139,7	5.59		5.83	5.35	7.48	4.13	1.93	2.44	
150	159	6.36	6	148	164	217	105	49	74,5	M16
	168,3	6.73		6.93	6.46	8.54	4.13	1.93	2.93	
175	193,7	7.75	8	176	192	247	105	51	87,5	M16
	200	8.64		7.96	7.56	9.72	4.13	2.01	3.44	
200	216	8.64	8	176	192	247	105	51	92	M16
	219,1	8.76		8.98	7.56	9.72	4.13	2.01	3.62	
250	267	10.68	10	202	218	273	105	51	105	M16
	273	10.92		11.10	8.58	10.75	4.13	2.01	4.13	
300	318	12.72	12	228	248	311	125	59	116	M20
	323,9	12.96		13.07	9.76	12.24	4.92	2.32	4.57	
350	355,6	14.22	14	228	248	311	125	59	117,5	M20
	368	14.72		14.88	9.76	12.24	4.92	2.32	4.63	
400	406,4	16.26	16	282	303	364	125	59	141,5	M20
	419	16.76		16.85	11.93	14.33	4.92	2.32	5.57	
500	508	20.32	20	332	302	364	125	59	144,5	M20
	521	20.84		20.87	11.89	14.33	4.92	2.32	5.69	
350	355,6	14.22	14	378	352	418	125	62	167	M20
	368	14.72		14.88	13.86	16.46	4.92	2.44	6.57	
400	406,4	16.26	16	428	402	475	145	70	186	M24
	419	16.76		16.85	15.83	18.70	5.71	2.76	7.32	
500	508	20.32	20	530	402	475	145	70	192	M24
	521	20.84		20.87	15.83	18.70	5.71	2.76	7.56	
500	508	20.32	20	530	452	526	145	70	211	M24
	521	20.84		20.87	17.80	20.71	5.71	2.76	8.31	
500	508	20.32	20	530	452	526	145	70	217,5	M24
	521	20.84		20.87	17.80	20.71	5.71	2.76	8.56	
500	508	20.32	20	530	554	627	145	70	262	M24
	521	20.84		20.87	21.81	24.69	5.71	2.76	10.31	
500	508	20.32	20	530	554	627	145	70	269	M24
	521	20.84		20.87	21.81	24.69	5.71	2.76	10.59	

Alternative materials and surface finishings are available upon request. Contact STAUFF for further information.

**Round Steel U-Bolt with Plastic Pipe Saddle (Short)  
Type RB+RUK**

**Plastic Pipe Saddle (type RUK)**  
(For sizes DN 20 to DN 40)

**Plastic Pipe Saddle (type RUK)**  
(From size DN 50 on)


Diameter Nominal DN	Outside Diameter Pipe / Tube Ø D1 (mm) (in)		Nominal Bore Pipe (in)	Dimensions (mm/in) Plastic Pipe Saddle (Type RUK)								
	A	L2		L3	B	H5	H6	H7	D2			
20	25	.98		30	35	25	24	5	8	5	8	
	26,9	1.06	3/4	1.18	1.38	.98	.94	.20	.31	.20	.31	
25	30	1.18		38	35	25	24	5	8	5	8	
	33,7	1.33	1	1.50	1.38	.98	.94	.20	.31	.20	.31	
32	38	1.50		46	35	25	24	5	8	5	8	
	42,4	1.69	1-1/4	1.81	1.38	.98	.94	.20	.31	.20	.31	
40	44,5	1.76		52	35	25	24	5	8	5	8	
	48,3	1.90	1-1/2	2.05	1.38	.98	.94	.20	.31	.20	.31	
50	57	2.28		64	38	25	50	5	10	6	10	
	60,3	2.41	2	2.52	1.50	.98	1.97	.20	.39	.24	.39	
65	76,1	3.04	2-1/2	82	38	25	50	5	10	6	10	
				3.23	1.50	.98	1.97	.20	.39	.24	.39	
80	88,9	3.56	3	94	75	40	70	8	17	10	15	
				3.70	2.95	1.57	2.76	.31	.67	.39	.59	
100	108	4.32		120	75	40	70	8	17	10	15	
	114,3	4.57	4	4.72	2.95	1.57	2.76	.31	.67	.39	.59	
125	133	5.32		148	75	40	70	8	17	10	15	
	139,7	5.59	5	5.83	2.95	1.57	2.76	.31	.67	.39	.59	
150	159	6.36		176	140	90	75	8	26	10	25	
	168,3	6.73	6	6.93	5.51	3.54	2.95	.31	1.02	.39	.98	
175	193,7	7.75		202	140	90	75	8	26	10	25	
				7.96	5.51	3.54	2.95	.31	1.02	.39	.98	
200	216	8.64		228	140	90	75	8	26	10	25	
	219,1	8.76	8	8.98	5.51	3.54	2.95	.31	1.02	.39	.98	
250	267	10.68		282	140	90	75	8	26	10	25	
	273	10.92	10	11.10	5.51	3.54	2.95	.31	1.02	.39	.98	
300	318	12.72		332	220	150	75	8	32	10	30	
	323,9	12.96	12	13.07	8.66	5.91	2.95	.31	1.26	.39	1.18	
350	355,6	14.22	14	378	220	150	75	8	32	10	30	
	368	14.72		14.88	8.66	5.91	2.95	.31	1.26	.39	1.18	
400	406,4	16.26	16	428	220	150	75	8	32	10	30	
	419	16.76		16.85	8.66	5.91	2.95	.31	1.26	.39	1.18	
500	508	2.32	20	530	220	150	75	8	32	10	30	
	521	2.84		2.87	8.66	5.91	2.95	.31	1.26	.39	1.18	

**Ordering Codes**
**Round Steel U-Bolt \*RB-\*A-52-\*W1-\*COMPL**

One Round Steel U-Bolt (type RB) includes four Nuts (to DIN EN ISO 4032).

- \* Round Steel U-Bolt **RB**
- \* Dimension A (mm) **A-52**
- \* Material code Carbon Steel, uncoated **W1**
- Carbon Steel, zinc-plated, blue-chromated **W32**
- Stainless Steel V4A 1.4401 / 1.4571 (AISI 316 / 316 Ti) **W5**

**only Plastic Pipe Saddle \*RUK-\*48.3-\*PP**

- \* Plastic Pipe Saddle (Short) **RUK**
- \* Exact outside diameter Ø D1 (mm) **48.3**
- \* Material of Pipe Saddle (see below) **PP**

**Standard Materials for Plastic Pipe Saddles**

**Polypropylene**  
 Colour: Green  
 Material code: **PP**

**Polyamide**  
 Colour: Black  
 Material code: **PA**

See pages 178 / 179 for material properties and technical information.

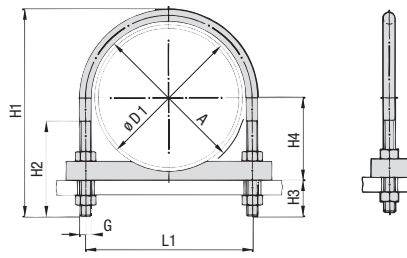
Alternative materials are available upon request. Please contact STAUFF for further information.

**Applications**

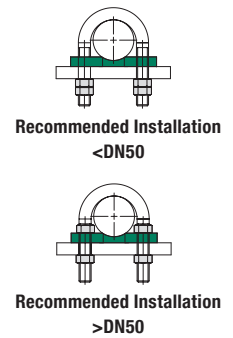
- Standing or hanging installation of pipes and tubes on beams, profiles and consoles
- Design with two threaded ends allows for ideal adaptation to suit the exact outer diameter of the pipe or tube

Alternative materials and surface finishings are available upon request. Contact STAUFF for further information.

## Round Steel U-Bolt with Plastic Pipe Saddle (Long) Type RB+RUL



Round Steel U-Bolt (type RB) with Plastic Pipe Saddle (type RUL)



### Ordering Codes

#### Clamp Assembly \*RB+RUL-\*48.3-\*PP-\*W1

One clamp assembly is consisting of one Round Steel U-Bolt (type RB), one Plastic Pipe Saddle (type RUL) and four Nuts (to DIN EN ISO 4032).

- \* Clamp Assembly (as listed above) **RB+RUL**
- \* Exact outside diameter Ø D1 (mm) **48.3**
- \* Material of Pipe Saddle (see below) **PP**
- \* Material code Carbon Steel, uncoated **W1**  
Carbon Steel, zinc-plated, blue-chromated **W32**  
Stainless Steel V4A 1.4401 / 1.4571 (AISI 316 / 316 Ti) **W5**

Please note: All items are supplied non-assembled.

### Standard Materials for Plastic Pipe Saddles

**Polypropylene**  
Colour: Green  
Material code: **PP**

**Polyamide**  
Colour: Black  
Material code: **PA**

See pages 178 / 179 for material properties and technical information.

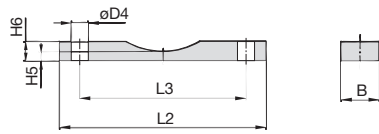
Alternative materials are available upon request. Please contact STAUFF for further information.

### Applications

- Standing or hanging installation of pipes and tubes on beams, profiles and consoles
- Design with two threaded ends allows for ideal adaptation to suit the exact outer diameter of the pipe or tube

Diameter Nominal DN	Outside Diameter Pipe / Tube Ø D1 (mm) (in)		Nominal Bore Pipe (in)	Dimensions (mm/in)						
	Round Steel U-Bolt (Type RB)			A	L1	H1	H2	H3	H4	Thread G
20	25	.98		30	40	73,5	41	30	17,5	M10
	26,9	1.06	3/4	1.18	1.57	2.89	1.61	1.18	.69	
25	30	1.18		38	48	81	48	30	20	M10
	33,7	1.33	1	1.50	1.89	3.19	1.89	1.18	.79	
32	38	1.50		46	56	89	48	30	24	M10
	42,4	1.69	1-1/4	1.81	2.20	3.50	1.89	1.18	.94	
40	44,5	1.76		52	62	100	55	35	27,2	M10
	48,3	1.90	1-1/2	2.05	2.44	3.94	2.17	1.38	1.07	
50	57	2.28		64	76	118	63	39	33,5	M12
	60,3	2.41	2	2.52	2.99	4.65	2.48	1.54	1.32	
65	76,1	3.04	2-1/2	82	94	135	77	39	43	M12
				3.23	3.70	5.31	3.03	1.54	1.69	
80	88,9	3.56	3	94	106	152	82	39	54,5	M12
				3.70	4.17	5.98	3.23	1.54	2.15	
100	108	4.32		120	136	190	105	47	64	M16
	114,3	4.57	4	4.72	5.35	7.48	4.13	1.85	2.52	
125	133	5.32		148	164	217	105	47	76,5	M16
	139,7	5.59	5	5.83	6.46	8.54	4.13	1.85	3.01	
150	159	6.36		176	192	247	105	47	80	M16
	168,3	6.73	6	6.93	7.56	9.72	4.13	1.85	3.15	
175	193,7	7.75		202	218	273	105	47	91,5	M16
				7.96	8.58	10.75	4.13	1.85	3.60	
200	216	8.64		228	248	311	125	55	96	M16
	219,1	8.76	8	8.98	7.56	9.72	4.13	1.85	3.78	
250	267	10.68		282	303	364	125	55	109	M16
	273	10.92	10	11.10	8.58	10.75	4.13	1.85	4.29	
300	318	12.72		332	352	418	125	55	120	M20
	323,9	12.96	12	13.07	9.76	12.24	4.92	2.17	4.78	
350	355,6	14.22	14	378	303	364	125	55	145,5	M20
	368	14.72		14.88	11.93	14.33	4.92	2.17	5.85	
400	406,4	16.26	16	428	302	364	125	55	148,5	M20
	419	16.76		16.85	11.89	14.33	4.92	2.17	5.85	
500	508	20.32	20	530	352	418	125	55	174	M20
	521	20.84		20.87	13.86	16.46	4.92	2.17	6.85	
					402	475	145	63	193	M24
					15.83	18.70	5.71	2.48	7.60	
					402	475	145	63	199	M24
					15.83	18.70	5.71	2.48	7.83	
					452	526	145	63	218	M24
					17.80	20.71	5.71	2.48	8.58	
					452	526	145	63	224,5	M24
					17.80	20.71	5.71	2.48	8.84	
					554	627	145	63	269	M24
					21.81	24.69	5.71	2.48	10.59	
					554	627	145	63	276	M24
					21.81	24.69	5.71	2.48	10.87	

Alternative materials and surface finishings are available upon request. Contact STAUFF for further information.

**Round Steel U-Bolt with Plastic Pipe Saddle (Long)  
Type RB+RUL**

**Plastic Pipe Saddle (type RUL)**

Diameter Nominal DN	Outside Diameter Pipe / Tube Ø D1 (mm) (in)		Nominal Bore Pipe (in)	Dimensions (mm/in) Plastic Pipe Saddle (Type RUL)						
	A	L2		L3	B	H5	H6	Ø D4		
20	25 26,9	.98 1.06	3/4	30 1.18	75	40	30	5	12	11
					2.95	1.57	1.18	.20	.47	.43
25	30 33,7	1.18 1.33	1	38 1.50	80	48	30	5	12	11
					3.15	1.89	1.18	.20	.47	.43
32	38 42,4	1.50 1.69	1-1/4	46 1.81	90	56	30	5	12	11
					3.54	2.20	1.18	.20	.47	.43
40	44,5 48,3	1.76 1.90	1-1/2	52 2.05	95	62	35	5	15	11
					3.74	2.44	1.38	.20	.59	.43
50	57 60,3	2.28 2.41	2	64 2.52	110	76	35	5	15	14
					4.33	2.99	1.38	.20	.59	.55
65	76,1	3.04	2-1/2	82 3.23	135	94	35	5	15	14
					5.31	3.70	1.38	.20	.59	.55
80	88,9	3.56	3	94 3.70	145	106	40	10	20	14
					5.71	4.17	1.57	.39	.79	.55
100	108 114,3	4.32 4.57	4	120 4.72	190	136	40	10	20	18
					7.48	5.35	1.57	.39	.79	.71
125	133 139,7	5.32 5.59	5	148 5.83	220	164	40	10	20	18
					8.66	6.46	1.57	.39	.79	.71
150	159 168,3	6.36 6.73	6	176 6.93	250	192	50	12	25	18
					9.84	7.56	1.97	.47	.98	.71
175	193,7	7.75		202 7.96	270	218	50	12	25	18
					10.63	8.58	1.97	.47	.98	.71
200	216 219,1	8.64 8.76	8	228 8.98	315	248	50	12	25	22
					12.40	9.76	1.97	.47	.98	.87
250	267 273	10.68 10.92	10	282 11.10	370	302	50	12	25	22
					14.57	11.89	1.97	.47	.98	.87
300	318 323,9	12.72 12.96	12	332 13.07	420	352	60	15	30	22
					16.54	13.86	2.36	.59	1.18	.87
350	355,6 368	14.22 14.72	14	378 14.88	480	402	60	15	30	26
					18.90	15.83	2.36	.59	1.18	1.02
400	406,4 419	16.26 16.76	16	428 16.85	540	452	60	15	30	26
					21.26	17.80	2.36	.59	1.18	1.02
500	508 521	20.32 20.84	20	530 20.87	640	554	60	15	30	26
					25.20	21.81	2.36	.59	1.18	1.02
					640	554	60	15	30	26
					25.20	21.81	2.36	.59	1.18	1.02

**Ordering Codes**
**Round Steel U-Bolt \*RB-\*A-52-\*W1-\*COMPL**

One Round Steel U-Bolt (type RB) includes four Nuts (to DIN EN ISO 4032).

- \* Round Steel U-Bolt **RB**
- \* Dimension A (mm) **A-52**
- \* Material code Carbon Steel, uncoated **W1**  
Carbon Steel, zinc-plated, blue-chromated **W32**  
Stainless Steel V4A 1.4401 / 1.4571 (AISI 316 / 316 Ti) **W5**

**only Plastic Pipe Saddle \*RUL-\*48.3-\*PP**

- \* Plastic Pipe Saddle (Long) **RUL**
- \* Exact outside diameter Ø D1 (mm) **48.3**
- \* Material of Pipe Saddle (see below) **PP**

**Standard Materials for Plastic Pipe Saddles**

**Polypropylene**  
 Colour: Green  
 Material code: **PP**

**Polyamide**  
 Colour: Black  
 Material code: **PA**

See pages 178 / 179 for material properties and technical information.

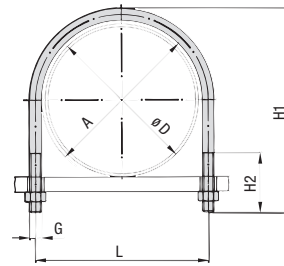
Alternative materials are available upon request. Please contact STAUFF for further information.

**Applications**

- Standing or hanging installation of pipes and tubes on beams, profiles and consoles
- Design with two threaded ends allows for ideal adaptation to suit the exact outer diameter of the pipe or tube

Alternative materials and surface finishings are available upon request. Contact STAUFF for further information.

**Round Steel U-Bolt (without Plastic Pipe Saddle)  
Type RBD (DIN 3570, Type A)**



Round Steel U-Bolt (type RBD)

**Ordering Codes**

**Clamp Assembly \*RBD-\*A-30-\*W1-\*COMPL**

One clamp assembly is consisting of one Round Steel U-Bolt (type RBD according to DIN 3570, Type A) and two Nuts (to DIN EN ISO 4032).

- \* Clamp Assembly (as listed above) **RBD**
- \* Dimension A (mm) **A-30**
- \* Material code Carbon Steel, uncoated **W1**  
Carbon Steel, zinc-plated, blue-chromated **W32**  
Stainless Steel V4A 1.4401 / 1.4571 (AISI 316 / 316 Ti) **W5**

Please note: All items are supplied non-assembled.

**Applications**

- Standing or hanging installation of pipes and tubes on beams, profiles and consoles
- Design with two threaded ends allows for ideal adaptation to suit the exact outer diameter of the pipe or tube

Diameter Nominal DN	Outside Diameter Pipe / Tube Ø D1 (mm) (in)		Nominal Bore Pipe (in)	Dimensions (mm/in)				
				Round Steel U-Bolt (Type RBD)				
				A	L	H1	H2	Thread G
20	25	.98		30	40	70	40	M10
	26,9	1.06	3/4	1.18	1.57	2.76	1.57	M10
25	30	1.18		38	48	76	40	M10
	33,7	1.33	1	1.50	1.89	2.99	1.57	M10
32	38	1.50		46	56	86	50	M10
	42,4	1.69	1-1/4	1.81	2.20	3.39	1.97	M10
					2.20	3.39	1.97	M10
40	44,5	1.76		52	62	92	50	M10
	48,3	1.90	1-1/2	2.05	2.44	3.62	1.97	M10
50	57	2.28		64	76	109	50	M12
	60,3	2.41	2	2.52	2.99	4.29	1.97	M12
65	76,1	3.04	2-1/2	82	94	125	50	M12
80	88,9	3.56	3	94	106	138	50	M12
100	108	4.32		120	136	171	60	M16
	114,3	4.57	4	4.72	5.35	6.73	2.36	M16
125	133	5.32		148	164	191	60	M16
	139,7	5.59	5	5.83	6.46	7.52	2.36	M16
150	159	6.36		176	192	217	60	M16
	168,3	6.73	6	6.93	7.56	8.54	2.36	M16
175	193,7	7.75		202	218	249	60	M16
200	216	8.64		228	248	283	70	M20
	219,1	8.76	8	8.98	9.76	11.14	2.76	M20
250	267	10.68		282	303	334	70	M20
	273	10.92	10	11.10	11.93	13.15	2.76	M20
300	318	12.72		332	352	385	70	M20
	323,9	12.96	12	13.07	13.86	15.16	2.76	M20
350	355,6	14.22	14	378	402	435	70	M24
	368	14.72		14.88	15.83	17.13	2.76	M24
400	406,4	16.26	16	428	452	487	70	M24
	419	16.76		16.85	17.80	19.17	2.76	M24
500	508	20.32	20	530	554	589	70	M24
	521	20.84		20.87	21.81	23.19	2.76	M24

Alternative materials and surface finishings are available upon request. Contact STAUFF for further information.

K