








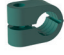
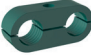

STAUFF Clamps

Fastening systems for pipes, tubes, hoses, cables and other industrial components

Product Catalogue

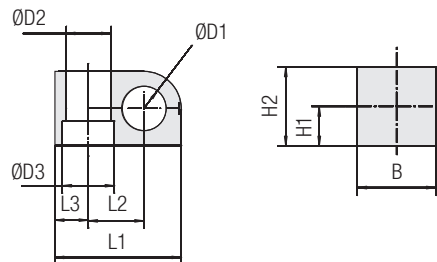
Version
10/2025



	Clamp Body - Single Design LBBU	136
	Clamp Body - Twin Design LBBU	137
	Weld Plate LBBU-SP	138
	Sleeve LBBU-HUE	138
	Cover Plate LBBU-DP	139
	Hexagon Head Bolt AS	139
	Clamp Body - Single Design LB	140
	Clamp Body - Twin Design LBG / LBU	141
	Clamp Body - Single Design LN	142
	Clamp Body - Twin Design LNGF / LNUF	143
	Cover Plate DPL	143



Clamp Body - Single Design Type LBBU



Ordering Codes

Clamp Body *LBBU-*1*06-*SA87-*M8/U5/16

- * Light Series LBBU **LBBU**
- * STAUFF Group **1**
- * Exact outside diameter Ø D1 (mm) **06**
- * Material code (see below) **SA87**
- * Thread code (suitable for bolts M8 and U5/16) **M8/U5/16**

Standard Materials



Thermoplastic Elastomer (87 Shore-A)
Colour: Black
Material code: **SA87**

See pages 178 / 179 for material properties and technical information.

Alternative materials are available upon request.
Please contact STAUFF for further information.

Product Features

- Compact and light-weight design for applications in which space is limited
- Available in 3 different sizes and covering all standard metric and imperial diameters between 4 mm and 32 mm
- Vibration-damping and noise-reducing clamp body material with UV, ozone and weathering-resistant characteristics
- Embedded metal sleeve to ensure stability of the clamp assembly

Group	Outside Diameter Pipe / Tube / Hose Ø D1		Nominal Bore Pipe (in)	Ordering Codes (1 Clamp Body)	Dimensions (mm/in)												
	(mm)	(in)			Ø D2	Ø D3	L1	L2	L3	H1	H2	B					
1	6			LBBU-106-SA87-M8/U5/16													
	6,4	1/4		LBBU-106.4-SA87-M8/U5/16													
	8	5/16		LBBU-108-SA87-M8/U5/16													
	9,5	3/8		LBBU-109.5-SA87-M8/U5/16	12	14	34	15	9	10	20	20					
	10		1/8	LBBU-110-SA87-M8/U5/16	.47	.55	1.34	.59	.35	.39	.79	.79					
	11			LBBU-111-SA87-M8/U5/16													
	12			LBBU-112-SA87-M8/U5/16													
	12,7	1/2		LBBU-112.7-SA87-M8/U5/16													
	10		1/8	LBBU-210-SA87-M8/U5/16													
	11			LBBU-211-SA87-M8/U5/16													
2	12			LBBU-212-SA87-M8/U5/16													
	12,7	1/2		LBBU-212.7-SA87-M8/U5/16													
	13,5		1/4	LBBU-213.5-SA87-M8/U5/16													
	14			LBBU-214-SA87-M8/U5/16	20	14	39	18	9	12	24	20					
	15			LBBU-215-SA87-M8/U5/16	.47	.55	1.54	.71	.35	.47	.94	.79					
	16	5/8		LBBU-216-SA87-M8/U5/16													
	17,2		3/8	LBBU-217.2-SA87-M8/U5/16													
	18			LBBU-218-SA87-M8/U5/16													
	19	3/4		LBBU-219-SA87-M8/U5/16													
	20			LBBU-220-SA87-M8/U5/16													
3	21,3			LBBU-321.3-SA87-M8/U5/16													
	22	7/8		LBBU-322-SA87-M8/U5/16													
	23			LBBU-323-SA87-M8/U5/16													
	25			LBBU-325-SA87-M8/U5/16	12	14	57,5	23,5	15	20	40	30					
	25,4	1		LBBU-325.4-SA87-M8/U5/16	.47	.55	2.26	.93	.59	.79	1.57	1.18					
	28			LBBU-328-SA87-M8/U5/16													
	30			LBBU-330-SA87-M8/U5/16													
	32	1-1/4		LBBU-332-SA87-M8/U5/16													

Additional outside diameters are available upon request. Please contact STAUFF for further information.



Type of Mounting SP (with Weld Plate LBBU-SP)

- Clamp assembly consisting of:
- 1 Hexagon Head Bolt AS
 - 1 Cover Plate LBBU-DP
 - 1 Sleeve LBBU-HUE
 - 1 Clamp Body LBBU
 - 1 Weld Plate LBBU-SP

Order Code

LBBU-SP-322-SA87-DP-AS-M8-W10

W10 (Weld Plate made of Carbon Steel, phosphated;
Other metal parts made of Carbon Steel, zinc/nickel-plated)
is the standard option for this type of installation.
For UNC threads / bolts, please replace M8 by U5/16.



Type of Mounting SM (with Hexagon Rail Nut SM-2-5D)

- Clamp assembly consisting of:
- 1 Hexagon Head Bolt AS
 - 1 Cover Plate LBBU-DP
 - 1 Sleeve LBBU-HUE
 - 1 Clamp Body LBBU
 - 1 Hexagon Rail Nut SM-2-5D
(for use with Mounting Rail TS,
see page 24 for details)

Order Code (Mounting Rail TS not included.)

LBBU-SM-322-SA87-DP-AS-M8-W3

W3 (Metal parts made of Carbon Steel, zinc/nickel-plated)
is the standard option for this type of installation.
For UNC threads / bolts, please replace M8 by U5/16.



Type of Mounting PM (for panel mounting without Weld Plate or Hexagon Rail Nut)

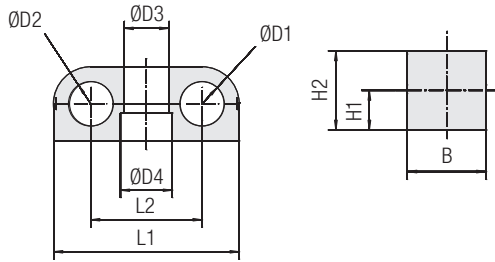
- Clamp assembly consisting of:
- 1 Hexagon Head Bolt AS
 - 1 Cover Plate LBBU-DP
 - 1 Sleeve LBBU-HUE
 - 1 Clamp Body LBBU

Order Code

LBBU-PM-322-SA87-DP-AS-M8-W3

W3 (Metal parts made of Carbon Steel, zinc/nickel-plated)
is the standard option for this type of installation.
For UNC threads / bolts, please replace M8 by U5/16.

Alternative sizes (e.g. for bolts M6 and 1/4–20 UNC), materials and surface finishings are available upon request.

**Clamp Body - Twin Design
Type LBBU**


Group	Outside Diameters		Nominal Bore Pipe	Ordering Codes (1 Clamp Body)	Dimensions (mm/in)									
	Ø D1 / Ø D2 (mm)	(in)			Ø D3	Ø D4	L1	L2	H1	H2	B			
1D	4			LBBU-104/04-SA87-M8/U5/16										
	6			LBBU-106/06-SA87-M8/U5/16										
	6,4	1/4		LBBU-106.4/06.4-SA87-M8/U5/16										
	8	5/16		LBBU-108/08-SA87-M8/U5/16										
	9,5	3/8		LBBU-109.5/09.5-SA87-M8/U5/16	12	14	50	30	10	20	20			
	10		1/8	LBBU-110/10-SA87-M8/U5/16	.47	.55	1.97	1.18	.39	.79	.79			
	11			LBBU-111/11-SA87-M8/U5/16										
	12			LBBU-112/12-SA87-M8/U5/16										
	12,7	1/2		LBBU-112.7/12.7-SA87-M8/U5/16										
	2D	10		1/8	LBBU-210/10-SA87-M8/U5/16									
11				LBBU-211/11-SA87-M8/U5/16										
12				LBBU-212/12-SA87-M8/U5/16										
12,7		1/2		LBBU-212.7/12.7-SA87-M8/U5/16										
13,5			1/4	LBBU-213.5/13.5-SA87-M8/U5/16										
14				LBBU-214/14-SA87-M8/U5/16	12	14	59	35	12	24	20			
15				LBBU-215/15-SA87-M8/U5/16	.47	.55	2.32	1.38	.47	.94	.79			
16		5/8		LBBU-216/16-SA87-M8/U5/16										
17,2			3/8	LBBU-217.2/17.2-SA87-M8/U5/16										
18				LBBU-218/18-SA87-M8/U5/16										
3D	19	3/4		LBBU-219/19-SA87-M8/U5/16										
	20			LBBU-220/20-SA87-M8/U5/16										
	21,3			LBBU-321.321.3-SA87-M8/U5/16										
	22	7/8		LBBU-322/22-SA87-M8/U5/16										
	23			LBBU-323/23-SA87-M8/U5/16										
	25			LBBU-325/25-SA87-M8/U5/16	12	14	86	47	20	40	30			
	25,4	1		LBBU-325.4/25.4-SA87-M8/U5/16	.47	.55	3.39	1.85	.79	1.57	.79			
	28			LBBU-328/28-SA87-M8/U5/16										
	30			LBBU-330/30-SA87-M8/U5/16										
	32	1-1/4		LBBU-332/32-SA87-M8/U5/16										

Ordering Codes
Clamp Body *LBBU-*1*06/06-*SA87-*M8/U5/16

- * Light Series LBBU LBBU
- * 1st Part of STAUFF Group 1
- * Exact outside diameters Ø D1 / Ø D2 (mm) 06/06
- * Material code (see below) SA87
- * Thread code (suitable for bolts M8 and U5/16) M8/U5/16

Standard Materials

- Thermoplastic Elastomer (87 Shore-A)**
- Colour: Black
- Material code: **SA87**

See pages 178 / 179 for material properties and technical information.

Alternative materials are available upon request. Please contact STAUFF for further information.

Product Features

- Compact and light-weight design for applications in which space is limited
- Available in 3 different sizes and covering all standard metric and imperial diameters between 4 mm and 32 mm
- Vibration-damping and noise-reducing clamp body material with UV, ozone and weathering-resistant characteristics
- Embedded metal sleeve to ensure stability of the clamp assembly

Additional outside diameters and combinations of different outside diameters are available upon request. Please contact STAUFF for further information.


Type of Mounting SP
(with Weld Plate LBBU-SP)

- Clamp assembly consisting of:
- 1 Hexagon Head Bolt AS
 - 1 Cover Plate LBBU-DP
 - 1 Sleeve LBBU-HUE
 - 1 Clamp Body LBBU
 - 1 Weld Plate LBBU-SP

Order Code
LBBU-SP-322/22-SA87-DP-AS-M8-W10
W10 (Weld Plate made of Carbon Steel, phosphated; Other metal parts made of Carbon Steel, zinc/nickel-plated) is the standard option for this type of installation. For UNC threads / bolts, please replace M8 by U5/16.

Type of Mounting SM
(with Hexagon Rail Nut SM-2-5D)

- Clamp assembly consisting of:
- 1 Hexagon Head Bolt AS
 - 1 Cover Plate LBBU-DP
 - 1 Sleeve LBBU-HUE
 - 1 Clamp Body LBBU
 - 1 Hexagon Rail Nut SM-2-5D (for use with Mounting Rail TS, see page 24 for details)

Order Code (Mounting Rail TS not included.)

LBBU-SM-322/22-SA87-DP-AS-M8-W3
W3 (Metal parts made of Carbon Steel, zinc/nickel-plated) is the standard option for this type of installation. For UNC threads / bolts, please replace M8 by U5/16.

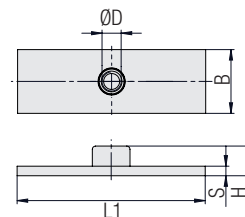
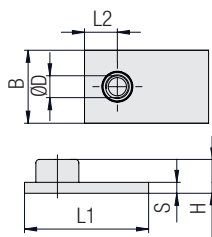
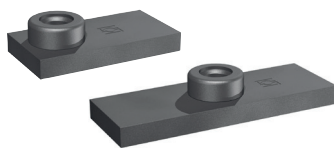
Type of Mounting PM
(for panel mounting without Weld Plate or Hexagon Rail Nut)

- Clamp assembly consisting of:
- 1 Hexagon Head Bolt AS
 - 1 Cover Plate LBBU-DP
 - 1 Sleeve LBBU-HUE
 - 1 Clamp Body LBBU

Order Code
LBBU-PM-322/22-SA87-DP-AS-M8-W3
W3 (Metal parts made of Carbon Steel, zinc/nickel-plated) is the standard option for this type of installation. For UNC threads / bolts, please replace M8 by U5/16.

Alternative sizes (e.g. for bolts M6 and 1/4–20 UNC), materials and surface finishings are available upon request.

Weld Plate Type LBBU-SP



STAUFF Group 1 to 3

STAUFF Group 1D to 3D

Ordering Codes

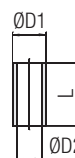
Weld Plate ***LBBU-SP-*1D-*M8-*W2**

- * Light Series LBBU **LBBU**
- * Weld Plate **-SP**
- * STAUFF Group **1D**
- * Thread code Metric ISO thread: M8 **M8**
 UNC thread: 5/16-18 UNC **U5/16**
- * Material code Carbon Steel, phosphated **W2**

Group STAUFF	Dimensions (mm/in)						Thread G	Ordering Codes (Standard Options)
	Ø D	L1	L2	H	B	S		
1	14	34	9	10,3	20	5	M8	LBBU-SP-1-M8-W2
	.55	1.34	.35	.41	.79	.20	5/16-18 UNC	LBBU-SP-1-U5/16-W2
2	14	39	9	10,3	20	5	M8	LBBU-SP-2-M8-W2
	.55	1.54	.35	.41	.79	.20	5/16-18 UNC	LBBU-SP-2-U5/16-W2
3	14	57,5	15	10,3	30	5	M8	LBBU-SP-3-M8-W2
	.55	2.26	.59	.41	1.18	.20	5/16-18 UNC	LBBU-SP-3-U5/16-W2
1D	14	50	X	10,3	20	5	M8	LBBU-SP-1D-M8-W2
	.55	1.97		.41	.79	.20	5/16-18 UNC	LBBU-SP-1D-U5/16-W2
2D	14	59	X	10,3	20	5	M8	LBBU-SP-2D-M8-W2
	.55	2.32		.41	.79	.20	5/16-18 UNC	LBBU-SP-2D-U5/16-W2
3D	14	86	X	10,3	30	5	M8	LBBU-SP-3D-M8-W2
	.55	3.39		.41	1.18	.20	5/16-18 UNC	LBBU-SP-3D-U5/16-W2

All threaded parts are available with Metric ISO thread or unified coarse (UNC) thread according to dimension table. Alternative sizes (e.g. for bolts M6 and 1/4-20 UNC), materials and surface finishings are available upon request.

Sleeve Type LBBU-HUE



Dimensions applicable only when used with Weld Plate LBBU-SP (**Type of Mounting SP**)

Dimensions applicable only when used with Hexagon Rail Nut SM-2-5D (**Type of Mounting SM**)

Dimensions applicable only when used for panel mounting without Weld Plate or Hexagon Rail Nut (**Type of Mounting PM**)

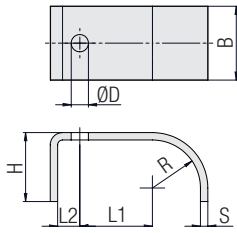
Group STAUFF	Dimensions (mm/in)			Ordering Codes (Standard Options)
	ØD1	ØD2	L	
1	12	9	13,5	LBBU-HUE-1/1D-SP-M8/U5/16-W3
	.47	.35	.53	
2	12	9	17,5	LBBU-HUE-2/2D-SP-M8/U5/16-W3
	.47	.35	.69	
3	12	9	33,5	LBBU-HUE-3/3D-SP-M8/U5/16-W3
	.47	.35	1.32	
1D	12	9	13,5	LBBU-HUE-1/1D-SP-M8/U5/16-W3
	.47	.35	.53	
2D	12	9	17,5	LBBU-HUE-2/2D-SP-M8/U5/16-W3
	.47	.35	.69	
3D	12	9	33,5	LBBU-HUE-3/3D-SP-M8/U5/16-W3
	.47	.35	1.32	

Group STAUFF	Dimensions (mm/in)			Ordering Codes (Standard Options)
	ØD1	ØD2	L	
1	12	9	12,8	LBBU-HUE-1/1D-SM-M8/U5/16-W3
	.47	.35	.50	
2	12	9	16,8	LBBU-HUE-2/2D-SM-M8/U5/16-W3
	.47	.35	.66	
3	12	9	32,8	LBBU-HUE-3/3D-SM-M8/U5/16-W3
	.47	.35	1.29	
1D	12	9	12,8	LBBU-HUE-1/1D-SM-M8/U5/16-W3
	.47	.35	.50	
2D	12	9	16,8	LBBU-HUE-2/2D-SM-M8/U5/16-W3
	.47	.35	.66	
3D	12	9	32,8	LBBU-HUE-3/3D-SM-M8/U5/16-W3
	.47	.35	1.29	

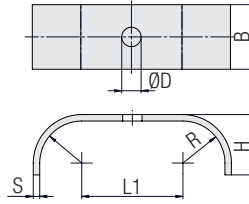
Group STAUFF	Dimensions (mm/in)			Ordering Codes (Standard Options)
	ØD1	ØD2	L	
1	12	9	18,8	LBBU-HUE-1/1D-PM-M8/U5/16-W3
	.47	.35	.74	
2	12	9	22,7	LBBU-HUE-2/2D-PM-M8/U5/16-W3
	.47	.35	.89	
3	12	9	38,8	LBBU-HUE-3/3D-PM-M8/U5/16-W3
	.47	.35	1.53	
1D	12	9	18,8	LBBU-HUE-1/1D-PM-M8/U5/16-W3
	.47	.35	.74	
2D	12	9	22,7	LBBU-HUE-2/2D-PM-M8/U5/16-W3
	.47	.35	.89	
3D	12	9	38,8	LBBU-HUE-3/3D-PM-M8/U5/16-W3
	.47	.35	1.53	

Alternative sizes (e.g. for bolts M6 and 1/4-20 UNC), materials and surface finishings are available upon request.

Cover Plate
Type LBBU-DP



STAUFF Group 1 to 3



STAUFF Group 1D to 3D



Group STAUFF	Dimensions (mm/in)							Ordering Codes (Standard Options)
	Ø D	L1	L2	R	H	B	S	
1	9	15	9	10	16	20	3	LBBU-DP-1-M8/U5/16-W3
	.35	.59	.35	.39	.63	.79	.12	
2	9	18	9	12	20	20	3	LBBU-DP-2-M8/U5/16-W3
	.35	.71	.35	.47	.79	.79	.12	
3	9	23,5	15	19,5	28	30	3	LBBU-DP-3-M8/U5/16-W3
	.35	.93	.59	.77	1.10	1.18	.12	
1D	9	30	X	10	16	20	3	LBBU-DP-1D-M8/U5/16-W3
	.35	1.18		.39	.63	.79	.12	
2D	9	35		12	20	20	3	LBBU-DP-2D-M8/U5/16-W3
	.35	1.38		.47	.79	.79	.12	
3D	9	47	19,5	28	20	3	LBBU-DP-3D-M8/U5/16-W3	
	.35	1.85	.77	.63	.79	.12		

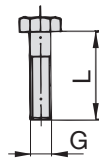
Ordering Codes

Cover Plate *LBBU-DP-*1D-*M8/U5/16-*W3

- * Light Series LBBU **LBBU**
- * Cover Plate **-DP**
- * STAUFF Group **1D**
- * Thread code (suitable for bolts M8 and U5/16) **M8/U5/16**
- * Material code Carbon Steel, zinc/nickel-plated **W3**

Alternative sizes (e.g. for bolts M6 and 1/4–20 UNC), materials and surface finishings are available upon request.

Hexagon Head Bolt
Type AS



Hexagon Head Bolt AS

(according to DIN 931 / 933 or ANSI / ASME B18.2.1.)
Dimensions applicable only when used with
Weld Plate LBBU-SP (Type of Mounting SP)
or Hexagon Rail Nut SM-2-5D (Type of Mounting SM)

Hexagon Head Bolt AS

(according to DIN 931 / 933 or ANSI / ASME B18.2.1.)
Dimensions applicable only when used for panel mounting
without Weld Plate or Hexagon Rail Nut
(Type of Mounting PM)



Group STAUFF	Dimensions (mm/in) Thread G x L	Ordering Codes (Standard Options)
1	M8 x 25	AS-M8x25-W3
	5/16–18 UNC x 1	AS-U5/16-18x1-W3
2	M8 x 28	AS-M8x28-W3
	5/16–18 UNC x 1-1/8	AS-U5/16-18x1-1/8-W3
3	M8 x 45	AS-M8x45-W3
	5/16–18 UNC x 1-3/4	AS-U5/16-18x1-3/4-W3
1D	M8 x 25	AS-M8x25-W3
	5/16–18 UNC x 1	AS-U5/16-18x1-W3
2D	M8 x 28	AS-M8x28-W3
	5/16–18 UNC x 1-1/8	AS-U5/16-18x1-1/8-W3
3D	M8 x 45	AS-M8x45-W3
	5/16–18 UNC x 1-3/4	AS-U5/16-18x1-3/4-W3

Group STAUFF	Dimensions (mm/in) Thread G x L	Ordering Codes (Standard Options)
1	M8 x 30	AS-M8x30-W3
	5/16–18 UNC x 1-1/4	AS-U5/16-18x1-1/4-W3
2	M8 x 35	AS-M8x35-W3
	5/16–18 UNC x 1-3/8	AS-U5/16-18x1-3/8-W3
3	M8 x 50	AS-M8x50-W3
	5/16–18 UNC x 2	AS-U5/16-18x2-W3
1D	M8 x 30	AS-M8x30-W3
	5/16–18 UNC x 1-1/4	AS-U5/16-18x1-1/4-W3
2D	M8 x 35	AS-M8x35-W3
	5/16–18 UNC x 1-3/8	AS-U5/16-18x1-3/8-W3
3D	M8 x 50	AS-M8x50-W3
	5/16–18 UNC x 2	AS-U5/16-18x2-W3

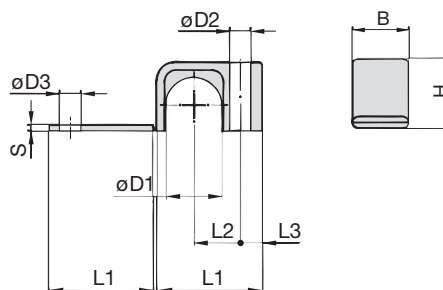
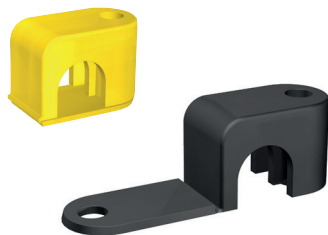
Ordering Codes

Hexagon Head Bolt *AS-*M8x25-*W3

- * Type of bolt Hexagon Head Bolt (according to DIN 931 / 933 or ANSI / ASME B18.2.1.) **AS**
- * Thread code Thread dimension according to dimension table **M8x25**
- * Material code Carbon Steel, zinc/nickel-plated **W3**

All threaded parts are available with Metric ISO thread or unified coarse (UNC) thread according to dimension table.
Alternative sizes (e.g. for bolts M6 and 1/4–20 UNC), materials and surface finishings are available upon request.

Clamp Body - Single Design Type LB



Ordering Codes

Clamp Body

***LB-*1*03.2-*PP**

- * Light Series: Clamp Body / Single Design **LB**
- * STAUFF Group **1**
- * Exact outside diameter Ø D1 (mm) **03.2**
- * Material code (see below) **PP**

Standard Materials



Polypropylene
Colour: Black
Material code: **PP**



Polyamide
Colour: Yellow
Material code: **PA**

See pages 178 / 179 for material properties and technical information.

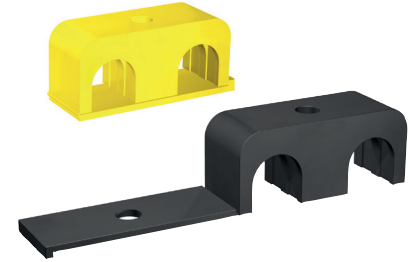
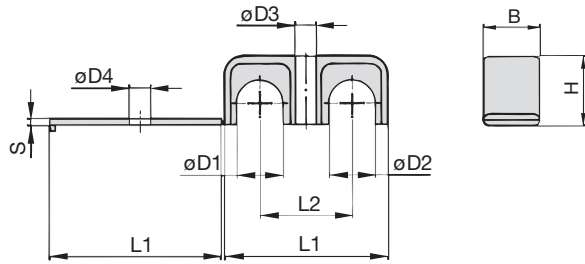
Alternative materials are available upon request.
Please contact STAUFF for further information.

Applications

- Pneumatics, Instrumentation and Automotive Technology,
Machine Tool Industry, Lubrication, Mechanical Engineering

Group	Outside Diameter Pipe / Tube / Hose Ø D1		Nominal Bore Pipe (in)	Ordering Codes (1 Clamp Body) (** = Material)	Dimensions (mm/in)								
	(mm)	(in)			L1	L2	L3	B	H	S	Ø D2	Ø D3	
1	3,2	1/8		LB-103.2-**-**									
	6			LB-106-**-**	22	9	6,5	12	10,5	2	6,8	7	
	6,4	1/4		LB-106.4-**-**	.87	.35	.26	.47	.41	.08	.27	.28	
	8			LB-108-**-**									
2	9,5	3/8		LB-209.5-**-**									
	10		1/8	LB-210-**-**	27	11	7	16	15	2	6,8	7	
	11,1			LB-211.1-**-**	1.06	.43	.28	.63	.59	.08	.27	.28	
	12			LB-212-**-**									
3	12,7	1/2		LB-312.7-**-**									
	13,5		1/4	LB-313.5-**-**									
	14			LB-314-**-**									
	15			LB-315-**-**	34	15	7	20	22,5	2	6,8	7	
	16	5/8		LB-316-**-**	1.34	.59	.28	.79	.89	.08	.27	.28	
	17,2		3/8	LB-317.2-**-**									
4	18			LB-318-**-**									
	19	3/4		LB-419-**-**									
	20			LB-420-**-**									
	21,3		1/2	LB-421.3-**-**	42	19	7	20	30	2	6,8	7	
	22			LB-422-**-**	1.65	.75	.28	.79	1.18	.08	.27	.28	
	25			LB-425-**-**									
	25,4	1		LB-425.4-**-**									

Additional outside diameters are available upon request. Please contact STAUFF for further information.

**Clamp Body - Twin Design
Types LBG / LBU**


Group	Outside Diameters		Nominal Bore Pipe	Ordering Codes (1 Clamp Body)	Dimensions							
	Pipe / Tube / Hose Ø D1 / Ø D2 (mm)	(in)			(in)	(** = Material)	L1	L2	B	H	S	Ø D3
1	3,2	1/8		LBG-103.2/03.2-**								
	6			LBG-106/06-**	31	18	12	10,5	2	6,8	7	
	6,4	1/4		LBG-106.4/06.4-**	1.22	.71	.47	.41	.08	.27	.28	
	8			LBG-108/08-**								
2	9,5	3/8		LBG-209.5/09.5-**								
	10		1/8	LBG-210/10-**	39	22	16	15	2	6,8	7	
	11,1			LBG-211.1/11.1-**	1.54	.87	.63	.59	.08	.27	.28	
	12			LBG-212/12-**								
3	12,7	1/2		LBG-312.7/12.7-**								
	13,5		1/4	LBG-313.5/13.5-**								
	14			LBG-314/14-**	53	30	20	22,5	2	6,8	7	
	15			LBG-315/15-**	2.09	1.18	.79	.89	.08	.27	.28	
	16	5/8		LBG-316/16-**								
	17,2		3/8	LBG-317.2/17.2-**								
4	18			LBG-318/18-**								
	19	3/4		LBG-419/19-**								
	20			LBG-420/20-**								
	21,3		1/2	LBG-421.3/21.3-**	70	38	20	30	2	6,8	7	
	22			LBG-422/22-**	2.76	1.50	.79	1.18	.08	.27	.28	
	25			LBG-425/25-**								
	25,4	1		LBG-425.4/25.4-**								

Ordering Codes
Clamp Body *LBG-*1*03.2/03.2-*PP

- * Light Series: Clamp Body / Twin Design with identical diameters **LBG**
- Clamp Body / Twin Design with different diameters **LBU**
- * STAUFF Group **1**
- * Exact outside diameters Ø D1 / Ø D2 (mm) **03.2/03.2**
- * Material code (see below) **PP**

Standard Materials

Polypropylene
 Colour: Black
 Material code: **PP**

Polyamide
 Colour: Yellow
 Material code: **PA**

See pages 178 / 179 for material properties and technical information.

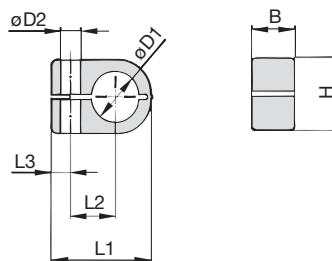
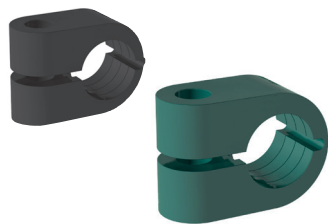
Alternative materials are available upon request. Please contact STAUFF for further information.

Applications

- Pneumatics, Instrumentation and Automotive Technology, Machine Tool Industry, Lubrication, Mechanical Engineering

Additional outside diameters and combinations of different outside diameters (Clamp Body, Type LBU) are available upon request. Please contact STAUFF for further information.

Clamp Body - Single Design Type LN



Ordering Codes

Clamp Body

***LN-*1*06-*PP**

- * Light Series: Clamp Body / Single Design **LN**
- * STAUFF Group **1**
- * Exact outside diameter Ø D1 (mm) **06**
- * Material code (see below) **PP**

Standard Materials



Polypropylene
Colour: Green
Material code: **PP**



Polyamide
Colour: Black
Material code: **PA**

See pages 178 / 179 for material properties and technical information.

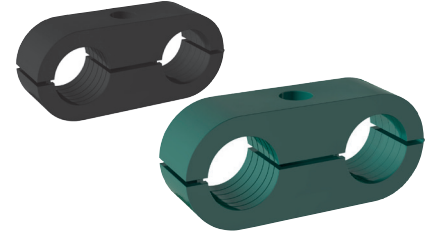
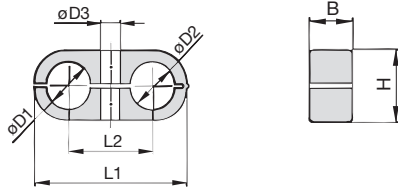
Alternative materials are available upon request. Please contact STAUFF for further information.

Applications

- Pneumatics, Instrumentation and Automotive Technology, Machine Tool Industry, Lubrication, Mechanical Engineering

Group	Outside Diameter Pipe / Tube / Hose Ø D1		Nominal Bore Pipe (in)	Ordering Codes (1 Clamp Body) (* = Material)	Dimensions (mm/in)					
	(mm)	(in)			L1	L2	L3	B	H	Ø D2
1	6			LN-106-**	22	9	7	14,5	13,5	6,8
	6,4	1/4		LN-106.4-**	.87	.35	.28	.57	.53	.27
	8			LN-108-**						
2	8			LN-208-**						
	9,5	3/8		LN-209.5-**	27	11	7	14,5	18,5	6,8
	10		1/8	LN-210-**	1.06	.43	.28	.57	.73	.27
	12			LN-212-**						
	12,7	1/2		LN-212.7-**						
3	10		1/8	LN-310-**						
	12			LN-312-**						
	12,7	1/2		LN-312.7-**						
	13,5		1/4	LN-313.5-**	33	15	7	14,5	23,5	6,8
	14			LN-314-**	1.30	.59	.28	.57	.93	.27
	15			LN-315-**						
4	16	5/8		LN-316-**						
	14			LN-414-**						
	15			LN-415-**						
	16	5/8		LN-416-**						
	17,2		3/8	LN-417.2-**	40	19	7	14,5	30,5	6,8
	18			LN-418-**	1.57	.75	.28	.57	1.20	.27
	19	3/4		LN-419-**						
	20			LN-420-**						
21,3		1/2	LN-421.3-**							
22			LN-422-**							

Additional outside diameters are available upon request. Please contact STAUFF for further information.

**Clamp Body - Twin Design
Type LNGF / LNUF**


Group STAUFF	Outside Diameters Pipe / Tube / Hose Ø D1 / Ø D2		Nominal Bore Pipe (in)	Ordering Codes (1 Clamp Body) (** = Material)	Dimensions (mm/in)				
	(mm)	(in)			L1	L2	B	H	Ø D3
1	6			LNGF-106/06-**-**	32	18	14,5	13,5	6,8
	6,4	1/4		LNGF-106.4/06.4-**-**	1.26	.70	.57	.53	.27
	8			LNGF-108/08-**-**					
2	8			LNGF-208/08-**-**					
	9,5	3/8		LNGF-209.5/09.5-**-**					
	10		1/8	LNGF-210/10-**-**	41	22	14,5	18,5	6,8
	12			LNGF-212/12-**-**	1.61	.86	.57	.73	.27
	12,7	1/2		LNGF-212.7/12.7-**-**					
3	10		1/8	LNGF-310/10-**-**					
	12			LNGF-312/12-**-**					
	12,7	1/2		LNGF-312.7/12.7-**-**					
	13,5		1/4	LNGF-313.5/13.5-**-**	54	30	14,5	23,5	6,8
	14			LNGF-314/14-**-**	2.13	1.18	.57	.93	.27
	15			LNGF-315/15-**-**					
4	16	5/8		LNGF-316/16-**-**					
	14			LNGF-414/14-**-**					
	15			LNGF-415/15-**-**					
	16	5/8		LNGF-416/16-**-**					
	17,2		3/8	LNGF-417.2/17.2-**-**	70	38	14,5	30,5	6,8
	18			LNGF-418/18-**-**	2.76	1.50	.57	1.20	.27
	19	3/4		LNGF-419/19-**-**					
	20			LNGF-420/20-**-**					
21,3		1/2	LNGF-421.3/21.3-**-**						
22			LNGF-422/22-**-**						

Ordering Codes
Clamp Body *LNGF-*1*06/06-*PP

- * Light Series: Clamp Body / Twin Design with identical diameters **LNGF**
- Clamp Body / Twin Design with different diameters **LNUF**
- * STAUFF Group **1**
- * Exact outside diameters Ø D1 / Ø D2 (mm) **06/06**
- * Material code (see below) **PP**

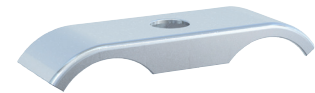
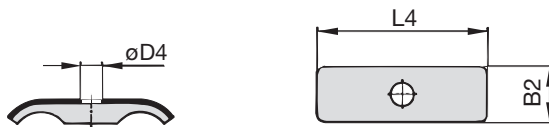
Standard Materials
Polypropylene
 Colour: Green
 Material code: **PP**
Polyamide
 Colour: Black
 Material code: **PA**

See pages 178 / 179 for material properties and technical information. Alternative materials are available upon request. Please contact STAUFF for further information.

Applications

- Pneumatics, Instrumentation and Automotive Technology, Machine Tool Industry, Lubrication, Mechanical Engineering

Additional outside diameters and combinations of different outside diameters (Clamp Body, type LNUF) are available upon request. Please contact STAUFF for further information.

**Cover Plate
Type DPL**


Group STAUFF	Dimensions (mm/in)			Ordering Codes (Standard Options)
	L4	B2	Ø D4	
1	29,5	15,5	6,8	DPL-1-W3
	1.16	.61	.27	
2	40	15,5	6,8	DPL-2-W3
	1.57	.61	.27	
3	51	16	6,8	DPL-3-W3
	2.01	.63	.27	
4	63,5	16	6,8	DPL-4-W3
	2.50	.63	.27	

Ordering Codes
Cover Plate *DPL-*1-*W3

- * Cover Plate for Clamp Body / Twin Design **DPL**
- * STAUFF Group **1**
- * Material code Carbon Steel, zinc/nickel-plated **W3**

Alternative materials and surface finishings are available upon request. Contact STAUFF for further information. Please note: The maximum tightening torque for bolts is 2,5 N·m (1.85 ft·lb).