

# STAUFF Clamps

Fastening systems for pipes, tubes, hoses, cables and other industrial components

---

Product Catalogue

Version  
10/2025





**Cushion Clamp Series**

STC / SPC

172



**Channel Rail**

SCS

173



**Compact Twin Series**

DS

174



**Agriculture Twin Series**

AG

174



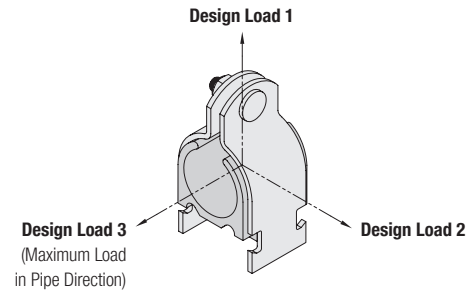
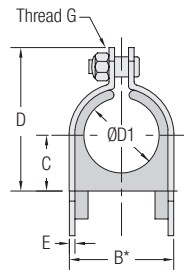
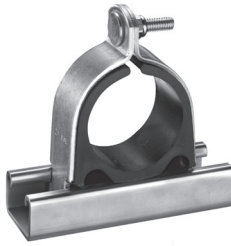
**Pipe / Tube Bushing**

RF

175

**Clamp Assembly - Types STC / SPC**

(for Use with Channel Rail SCS)



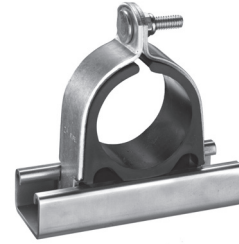
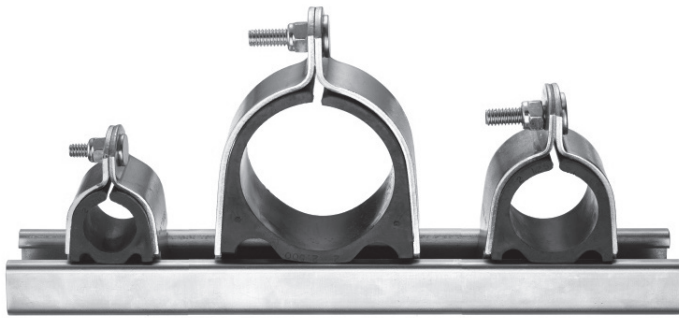
Outside Diameter Pipe / Tube / Hose Ø D1 (mm) (in)		Nominal Bore Pipe (in)	Ordering Codes (1 Clamp Assembly) (*** = Material Code)	Standard Packaging Units pcs.	Dimensions (mm/in)					Thread G	Design Loads (kN/psi)		
					B*	C	D	E		1	2	3	
6,4	1/4		STC-025-**-K	24 / box	15,7	5,6	28,2	2	1/4-20 UNC	1,78	0,22	0,22	
					.62	.22	1.11	.08		400	50	50	
8	3/8		STC-037-**-K	24 / box	19,1	7,1	31,5	2	1/4-20 UNC	1,78	0,22	0,22	
					.75	.28	1.24	.08		400	50	50	
12,7	1/2		STC-050-**-K	24 / box	22,1	8,6	34,5	2	1/4-20 UNC	1,78	0,22	0,22	
					.87	.34	1.36	.08		400	50	50	
13,5		1/4	SPC-025-**-K	24 / box	23,1	9,1	35,8	2	1/4-20 UNC	1,78	0,22	0,22	
					.91	.36	1.41	.08		400	50	50	
16	5/8		STC-062-**-K	24 / box	25,4	10,4	38,1	2	1/4-20 UNC	1,78	0,22	0,22	
					1.00	.41	1.50	.08		400	50	50	
17,2		3/8	SPC-037-**-K	24 / box	27,2	11,4	40,4	2	1/4-20 UNC	2,67	0,33	0,33	
					1.07	.45	1.59	.08		600	75	75	
19	3/4		STC-075-**-K	24 / box	33,8	13,5	45,2	2	1/4-20 UNC	2,67	0,33	0,33	
					1.33	.53	1.78	.08		600	75	75	
21,3		1/2	SPC-050-**-K	24 / box	36,8	15,0	48,5	2	1/4-20 UNC	2,67	0,33	0,33	
					1.45	.59	1.91	.08		600	75	75	
22,2	7/8		STC-087-**-K	24 / box	36,8	14,7	48,5	2	1/4-20 UNC	2,67	0,33	0,33	
					1.45	.58	1.91	.08		600	75	75	
25,4	1		STC-100-**-K	12 / box	42,2	16,8	51,6	2,8	1/4-20 UNC	2,67	0,33	0,33	
					1.66	.66	2.03	.11		600	75	75	
26,9		3/4	SPC-075-**-K	12 / box	45,5	18,3	54,9	2,8	1/4-20 UNC	2,67	0,33	0,33	
					1.79	.72	2.16	.11		600	75	75	
32	1-1/4		STC-125-**-K	12 / box	48,8	19,8	58,4	2,8	1/4-20 UNC	2,67	0,33	0,33	
					1.92	.78	2.30	.11		600	75	75	
33,7		1	SPC-100-**-K	12 / box	56,4	23,1	69,9	3	5/16-18 UNC	2,67	0,33	0,33	
					2.22	.91	2.75	.12		600	75	75	
38	1-1/2		STC-150-**-K	12 / box	56,4	23,1	69,9	3	5/16-18 UNC	2,67	0,33	0,33	
					2.22	.91	2.75	.12		600	75	75	
42		1-1/4	SPC-125-**-K	12 / box	62,7	26,2	77,0	3	5/16-18 UNC	3,56	0,56	0,56	
					2.47	1.03	3.03	.12		800	125	125	
48,3		1-1/2	SPC-150-**-K	12 / box	62,7	29,5	83,3	3	5/16-18 UNC	3,56	0,56	0,56	
					2.47	1.16	3.28	.12		800	125	125	
50,8	2		STC-200-**-K	12 / box	69,1	29,5	83,3	3	5/16-18 UNC	3,56	0,56	0,56	
					2.72	1.16	3.28	.12		800	125	125	
60,3		2	SPC-200-**-K	1 / bag	69,1	35,8	96,0	3	5/16-18 UNC	3,56	0,56	0,56	
					3.22	1.41	3.78	.12		800	125	125	
63,5	2-1/2		STC-250-**-K	1 / bag	88,1	38,9	102,4	3	5/16-18 UNC	3,56	0,56	0,56	
					3.47	1.53	4.03	.12		800	125	125	
66,7	2-5/8		STC-262-**-K	1 / bag	88,1	38,9	102,4	3	5/16-18 UNC	3,56	0,56	0,56	
					3.47	1.53	4.03	.12		800	125	125	
73		2-1/2	SPC-250-**-K	1 / bag	94,5	42,2	108,5	3	5/16-18 UNC	3,56	0,56	0,56	
					3.72	1.66	4.27	.12		800	125	125	
76,2	3		STC-300-**-K	1 / bag	100,8	45,2	114,8	3	5/16-18 UNC	4,45	0,89	0,67	
					3.97	1.78	4.52	.12		1 000	200	150	
88,9		3	SPC-300-**-K	1 / bag	110,7	50,0	124,7	3	3/8-16 UNC	4,45	0,89	0,67	
					4.36	1.97	4.91	.12		1 000	200	150	
102		3-1/2	SPC-350-**-K	1 / bag	126,2	57,9	140,5	3	3/8-16 UNC	4,45	0,89	0,67	
					4.97	2.28	5.53	.12		1 000	200	150	
114		4	SPC-400-**-K	1 / bag	138,9	64,3	153,2	3	3/8-16 UNC	4,45	0,89	0,67	
					5.47	2.53	6.03	.12		1 000	200	150	
140		5	SPC-500-**-K	1 / bag	164,3	77,0	178,6	3,6	3/8-16 UNC	4,45	0,89	0,67	
					6.47	3.03	7.03	.14		1 000	200	150	
168		6	SPC-600-**-K	1 / bag	189,7	89,7	204,0	3,6	3/8-16 UNC	4,45	0,89	0,67	
					7.47	3.53	8.03	.14		1 000	200	150	

\* Minimum required for installation.

One clamp assembly is consisting of two carbon steel clamp halves (one with threaded stud), one thermoplastic cushion insert and one lock nut with Nylon insert. Channel rail not included. All threaded parts are only available with unified coarse (UNC) thread. Alternative materials and surface finishings are available upon request. Contact STAUFF for further information.

**Clamp Assembly ■ Types STC / SPC**

(for Use with Channel Rail SCS)



**Standard Materials**



Cushion Insert  
**Thermoplastic Elastomer** (80 Shore-A)  
 Colour: Black

The cushion material is compatible with most oils, chemicals and cleaning solvents and suitable for applications within a temperature range of -50 °C ... +125 °C (-58 °F ... +257 °F).

Alternative materials are available upon request. Please contact STAUFF for further information.

**Product Features**

- Clamp assemblies designed to mount directly to 41,3 mm / 1-5/8 in wide strut channels, such as the STAUFF Channel Rail, type SCS
- Suitable for most Fluid Power applications ranging from mobile equipment to industrial machinery
- Reduced horizontal mounting space
- Easy installation and retro fit capability
- Reduces shock and vibration while preventing galvanic corrosion

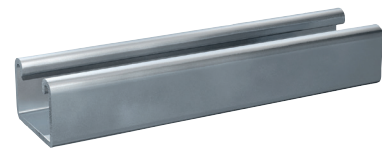
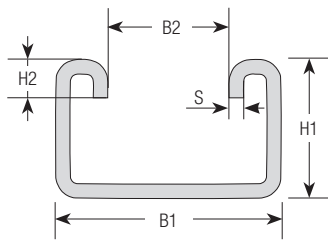
**Ordering Codes**

**Clamp Assembly**

**\*STC-\*125-\*W4-\*K**

* Type of clamp	STC (Tube diameters) SPC (Pipe diameters)	<b>STC</b> <b>SPC</b>
* Pipe / Tube O.D. (according to dimension table)		<b>125</b>
* Material code	Carbon Steel, zinc-plated, blue-chromated	<b>W32</b>
	Stainless Steel V2A	<b>W4</b>
	1.4301 (AISI 304)	<b>W4</b>
	Stainless Steel V4A	<b>W5</b>
	1.4401 (AISI 316)	<b>W5</b>
Assembling	Components packed in kits	<b>K</b>

**Channel Rail ■ Type SCS**



Dimensions (mm/in)				
B1	B2	H1	H2	S
41,3	22,2	25,4	7	2,7
1.63 (1-5/8)	.88 (7/8)	1.00	.28	.11

Alternative rail profiles, materials and surface finishings are available upon request. Contact STAUFF for further information.

**Ordering Codes**

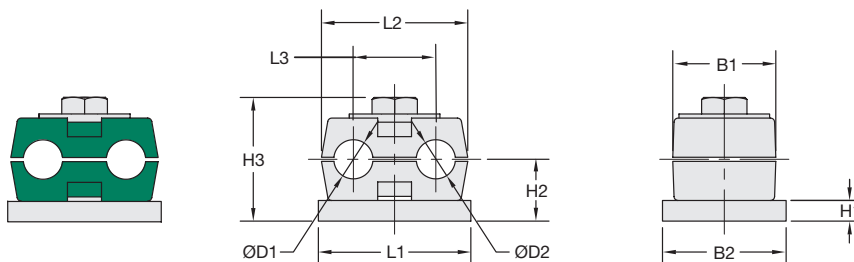
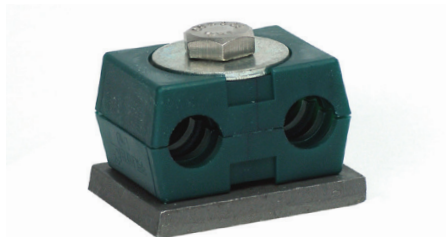
**Strut Channel**

**\*SCS-\*048-\*1-\*PL**

* Strut Channel		<b>SCS</b>
* Length of Rail	1,22 m / 4.00 ft / 48 in 3,05 m / 10.00 ft / 120 in	<b>048</b> <b>120</b>
* Height of Rail	25,4 mm / 1.00 in	<b>1</b>
* Material code	Carbon Steel, uncoated	<b>PL</b>

N

### Compact Twin Series: Clamp Body Type DS



#### Ordering Codes

**Clamp Body** \*1-\*06/06-\*PP-\*DS

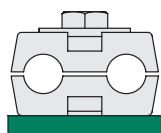
One clamp body is consisting of two clamp halves.

- \* STAUFF Group DS 1 **1**
- \* Exact outside diameters Ø D1 / Ø D2 (mm) **06/06**
- \* Clamp Body Material (Polypropylene) **PP**
- \* Compact Twin Series **DS**

Group	Outside Diameter Pipe / Tube Ø D1 / Ø D2		Nominal Bore Pipe Copper Tube ASTM B88		Ordering Codes (2 Clamp Halves)	Dimensions (mm/in)								
	(mm)	(in)	(in)	(in)		L1	L2	L3	H1	H2	H3	B1	B2	
STAUFF DS 1	6				106/06-PP-DS									
	6,4	1/4			106.4/06.4-PP-DS									
	8	5/16			108/08-PP-DS	37	35,5	20	5	15	30	25	30	
	9,5	3/8		1/4	109.5/09.5-PP-DS	1.46	1.40	.79	.20	.59	1.18	.98	1.18	
	10		1/8		110/110-PP-DS									

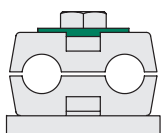
Additional outside diameters are available upon request. Please contact STAUFF for further information.

### Compact Twin Series: Metal Hardware



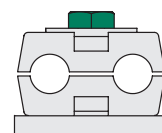
**Weld Plate, Type SP-DS**

**SP-DS-1-U-W2**  
Thread size: 1/4–20 UNC  
Carbon Steel, phosphated



**Cover Plate, Type US-DS**

**US-DS-1-W3**  
Carbon Steel, zinc/nickel-plated

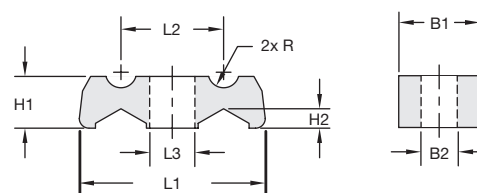
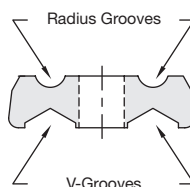


**Hexagon Bolt, Type AS**

**AS-1/4-20UNCx1-W3**  
Thread size: 1/4–20 UNC  
Carbon Steel, zinc/nickel-plated

All threaded parts are only available with unified coarse (UNC) thread. Rail mount and stacking assemblies as well as alternative materials and surface finishings are available upon request.

### Agriculture Twin Series: Clamp Body Type AG



Group	Min/Max Outside Diameters Pipe / Tube				Ordering Codes (1 Clamp Body)	Dimensions (mm/in)							
	Radius Grooves		V-Grooves			L1	L2	L3	H1	H2	B1	B2	R
2	3 ... 10	.12 ... .39	4 ... 15	.26 ... .59	<b>215.8/09.6-PP-AG-BK-HV</b>	57,5 2.26	31,7 1.25	14,0 .55	16,0 .63	7,1 .24	25,0 .98	11,0 .43	4,8 .19
3	4 ... 25	.16 ... .98	7 ... 20	.28 ... .79	<b>324.8/19.5-PP-AG-BK-HV</b>	62,0 2.48	34,5 1.36	14,0 .55	19,0 .75	7,1 .28	32,0 1.26	11,0 .43	12,4 .49

#### Standard Material



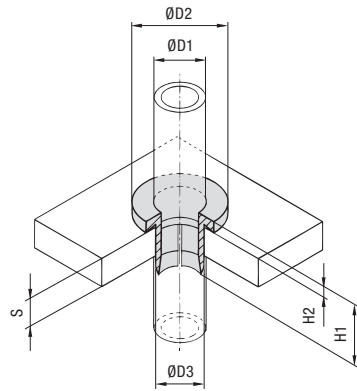
Polypropylene  
Colour: Black

See pages 178 / 179 for properties and technical information.

#### Product Features

- Flip the clamp body to choose between the radius grooved or the v-grooved design (suitable for a range of diameters)
- Use M10 or 3/8–16 UNC bolts or screws (preferably with washers) to fasten clamp bodies directly to the machine
- Clamp bodies can be stacked for multi-level assembly

Additional outside diameters are available upon request. Please contact STAUFF for further information.



## Pipe / Tube Bushing ■ Type SRF



Outside Diameter ØD1		Nominal Bore (in)	Dimensions (mm/in)			Wall Thickness (mm/in)		Mounting Bore (mm/in)
(mm)	(in)		ØD2	H1	H2	S	ØD3	
6	1/4		18	22	4	4 ... 12	10	
			.71	.87	.16	.16 ... .47	.39	
8	5/16		20	22	4	4 ... 12	12	
			.79	.87	.16	.16 ... .47	.47	
10	3/8	1/8 Pipe 1/4 Copper Tube (ASTM B88)	22	22	4	4 ... 12	14	
			.87	.87	.16	.16 ... .47	.55	
12	1/2	3/8 Copper Tube (ASTM B88)	24	22	4	4 ... 12	16	
			.94	.87	.16	.16 ... .47	.63	
14		1/4 Pipe	26	22	4	4 ... 12	18	
			1.02	.87	.16	.16 ... .47	.71	
15			28	22	4	4 ... 12	20	
			1.10	.87	.16	.16 ... .47	.79	
16	5/8	1/2 Copper Tube (ASTM B88)	28	22	4	4 ... 12	20	
			1.10	.87	.16	.16 ... .47	.79	
18			30	22	4	4 ... 12	22	
			1.18	.87	.16	.16 ... .47	.87	
20	3/4		32	22	4	4 ... 12	24	
			1.26	.87	.16	.16 ... .47	.94	
22	7/8	3/4 Copper Tube (ASTM B88)	34	22	4	4 ... 12	26	
			1.34	.87	.16	.16 ... .47	1.02	
			38	22	4	4 ... 12	30	
25	1		1.50	.87	.16	.16 ... .47	1.18	
			41	22	4	4 ... 12	33	
28		1 Copper Tube (ASTM B88)	1.61	.87	.16	.16 ... .47	1.30	
			43	22	4	4 ... 12	34	
30			1.69	.87	.16	.16 ... .47	1.39	
			48	22	4	4 ... 12	40	
35		1-1/4 Copper Tube (ASTM B88)	1.89	.87	.16	.16 ... .47	1.57	
			51	22	4	4 ... 12	43	
38	1-1/2		2.01	.87	.16	.16 ... .47	1.70	
			55	22	4	4 ... 12	47	
42		1-1/4 Pipe 1-1/2 Copper Tube (ASTM B88)	2.17	.87	.16	.16 ... .47	1.85	

## Ordering Codes

## Pipe / Tube Bushing

**\*SRF-\*20-\*PP**

- \* Pipe / Tube Bushing SRF
- \* Exact outside diameter Ø D1 (mm) 20
- \* Material code (see below) PP

## Standard Materials



**Polypropylene**  
Colour: Natural colour  
Material code: **PP**



**Thermoplastic Elastomer (87 Shore-A)**  
Colour: Black  
Material code: **SA87**

See pages 178 / 179 for material properties and technical information.

## Product Features

- Designed to centre the pipe or tube in a through-hole (e.g. for return lines entering the hydraulic reservoir)
- Vibration and noise absorbing element
- Available for all commonly used Metric and imperial pipe and tube diameters from 6 ... 42 mm and 1/4 ... 1-1/2 in
- Easy plug-in installation