

STAUFF Flanges

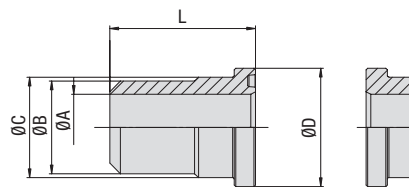
High-pressure flange connectors
and gear pump flanges

Product Catalogue



	SAE Butt-Weld Flange Adaptor CAG-ST	24
	SAE Butt-Weld Counterflange Adaptor CSG-ST	24
	SAE Socket-Weld Flange Adaptor CAG-ES	26
	SAE Socket-Weld Counterflange Adaptor CSG-ES	26
	SAE Flange Adaptor with Male BSPT Thread CAG-T	28
	SAE Counterflange Adaptor with Male BSPT Thread CSG-T	28
	SAE Flange Adaptor with Male NPT Thread CAG-N	30
	SAE Counterflange Adaptor with Male NPT Thread CSG-N	30
	SAE Flange Adaptor with Male Metric Thread and 24° Conical Bore (Shape W acc. to DIN 3861) CAG-L/S	32
	SAE 90° Butt-Weld Flange Adaptor CAG90-ST	34
	SAE 90° Flange Adaptor with Male Metric Thread and 24° Conical Bore (Shape W acc. to DIN 3861) CAG90-L/S	36

SAE Butt-Weld Flange / Counterflange Adaptor Type CAG/CSG-ST • 3000 PSI Series



CAG

CSG

3000 PSI Standard Pressure Series (according to ISO 6162-1:2012)

Nominal Size		PN ¹ (bar/PSI)	Dimensions (mm/in)			Ordering Codes
DN	(in)	10.9	ØC	ØD	L	
13	1/2	350	24	30,2	41	CAG-301-ST- ** /** -W1
		5075	.94	1.19	1.61	
/ replace with ØB / ØA: 16/12 • 20/15 • 21,3/15,7 • 21,3/13,7 • 21,3/12						
19	3/4	350	31,5	38,1	50	CAG-302-ST- ** /** -W1
		5075	1.24	1.50	1.97	
/ replace with ØB / ØA: 25/19 • 26,9/19,7 • 28/19						
25	1	345	38	44,45	50	CAG-303-ST- ** /** -W1
		5003	1.50	1.75	1.97	
/ replace with ØB / ØA: 25/19 • 28/22 • 30/24 • 30/22 • 33,7/24,7 • 38/30 • 38/28						
32	1-1/4	280	43	50,8	55	CAG-304-ST- ** /** -W1
		4061	1.69	2.00	2.17	
/ replace with ØB / ØA: 25/19 • 30/24 • 38/32 • 38/30 • 38/28 • 42,4/33,4 • 42,4/29,8 • 43/31						
38	1-1/2	210	50	60,35	57	CAG-305-ST- ** /** -W1
		3045	1.97	2.38	2.24	
/ replace with ØB / ØA: 38/30 • 42/36 • 42/35 • 42/32 • 45/43 • 48,3/41 • 48,3/38,3 • 48,3/34 • 48,3/35 • 50/38						
51	2	210	62	71,4	57	CAG-306-ST- ** /** -W1
		3045	2.44	2.81	2.24	
/ replace with ØB / ØA: 48,3/38,4 • 55/45 • 60,3/54,5 • 60,3/52 • 60,3/50,3 • 60,3/47,7 • 60,3/44,3						
64	2-1/2	175	74	84,1	58	CAG-307-ST- ** /** -W1
		2538	2.91	3.31	2.28	
/ replace with ØB / ØA: 65/53 • 70/55 • 74/65 • 74/61,8 • 74/58						
76	3	160	90	101,6	60	CAG-308-ST- ** /** -W1
		2320	3.54	4.00	2.36	
/ replace with ØB / ØA: 80/68 • 89/82,5 • 89/81 • 89/76 • 89/74 • 89/70						
89	3-1/2	35	102	114,3	80	CAG-309-ST- ** /** -W1
		508	4.02	4.50	3.15	
/ replace with ØB / ØA: 100/88 • 89/81,7 • 89/73						
102	4	35	114	127	80	CAG-310-ST- ** /** -W1
		508	4.49	5.00	3.15	
/ replace with ØB / ØA: 110/98 • 114/107 • 114/102 • 114/96,7						
127	5	35	140	152,4	80	CAG-311-ST- ** /** -W1
		508	5.51	6.00	3.15	
/ replace with ØB / ØA: 133/120 • 139,7/131,7 • 139,7/119,7						

Please see Page 89 for separate Bolt Sets and Sealings.

Materials / Ordering Options / Examples

- * SAE Flange Adaptor (without O-ring) made of Steel S355J2 or equivalent, blank (oiled)
- * SAE Counterflange Adaptor made of Steel S355J2 or equivalent, blank (oiled)
- * SAE Flange Adaptor (without O-ring) made of Stainless Steel V4A – 1.4404 (on request)

CAG-...-ST- ** /** -W1

CSG-...-ST- ** /** -W1

CAG-...-ST- ** /** -W5

- * Kit with DB including Metric bolts 10.9, spring rings, O-ring made of NBR (Buna-N®)
- * Kit with DB including Metric bolts 10.9, spring rings, O-ring made of FKM (Viton®)
- * Kit with DB including UNC bolts (Grade 8), spring rings, O-ring made of NBR (Buna-N®)
- * Kit with BM including Metric bolts 10.9, spring rings, O-ring made of NBR (Buna-N®)

CAG-...-ST- ** /** -W129-K

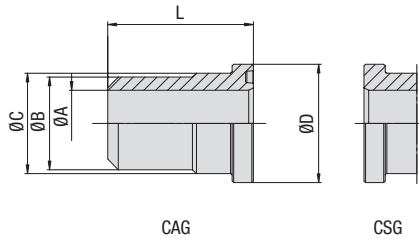
CAG-...-ST- ** /** -V-W129-K

CAG-...-ST- ** /** -U-W129-K

CAG-...-ST- ** /** -BM-W129-K

Please always indicate ØB / ØA.

¹ The maximum working pressure PN (bar/PSI) applies only to the flange itself and depends on the bolts used (Grade 10.9). The actual maximum working pressure depends on the thickness and the quality of the tube used.

**SAE Butt-Weld Flange / Counterflange Adaptor
Type CAG/CSG-ST - 6000 PSI Series**

B
6000 PSI High Pressure Series (according to ISO 6162-2:2012)

Nominal Size		PN ¹ (bar/PSI)	Dimensions (mm/in)		Ordering Codes	
DN	(in)	10.9	ØC	ØD		L
13	1/2	420	24	31,8	34	CAG-601-ST-*/**/-W1
		6090	.94	1.25	1.34	
/ replace with ØB / ØA: 16/12 • 20/15 • 21,3/12,3						
19	3/4	420	32	41,3	38	CAG-602-ST-*/**/-W1
		6090	1.26	1.63	1.50	
/ replace with ØB / ØA: 16/12 • 20/14 • 25/19 • 25/18 • 25/17 • 26,9/15,7 • 28/18						
25	1	420	38	47,6	40	CAG-603-ST-*/**/-W1
		6090	1.50	1.87	1.57	
/ replace with ØB / ØA: 25/19 • 30/24 • 30/22 • 33,7/21 • 33,7/19,5 • 38/30 • 38/28						
32	1-1/4	420	44	54	45	CAG-604-ST-*/**/-W1 ²
		6090	1.73	2.13	1.77	
/ replace with ØB / ØA: 25/19 • 30/24 • 38/30 • 38/28 • 38/27 • 42,4/29,8						
38	1-1/2	420	51	63,5	50	CAG-605-ST-*/**/-W1
		6090	2.01	2.50	1.97	
/ replace with ØB / ØA: 38/28 • 45/32 • 48,3/38,3 • 48,3/35,7 • 48,3/34 • 48,3/32,3 • 48,3/30,7 • 50/38 • 51/35						
51	2	420	67	79,4	58	CAG-606-ST-*/**/-W1
		6090	2.64	3.13	2.28	
/ replace with ØB / ØA: 48,3/35,7 • 60,3/47,7 • 60,3/44,3 • 60,3/42,8 • 60,3/40,3 • 60,3/33,5 • 65 /39						
64	2-1/2	420	89	108	75	CAG-607-ST-*/**/-W1
		6090	3.50	4.25	2.95	
/ replace with ØB / ØA: 76,1/60 • 76,1/56 • 89/69 • 89/67 • 89/60,5						
76	3	420	114	131,6	80	CAG-608-ST-*/**/-W1
		6090	4.49	5.18	3.15	
/ replace with ØB / ØA: 89/69 • 89/66,7 • 89/60,5 • 114/92,3 • 114/79,3						

Please see Page 89 for separate Bolt Sets and Sealings.

¹ The maximum working pressure PN (bar/PSI) applies only to the flange itself and depends on the bolts used (Grade 10.9). The actual maximum working pressure depends on the thickness and the quality of the tube used.

² According to ISO 6162-2 bolts M12 should be used but because usually bolts M14 are used the description of the complete part must show M14 (e.g. CAG-604-ST-42.4/29.8-M14-W129-K).

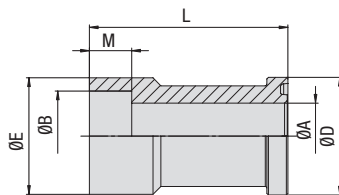
Materials / Ordering Options / Examples

- * SAE Flange Adaptor (without O-ring) made of Steel S355J2 or equivalent, blank (oiled) CAG-...-ST-*/**/-W1
- * SAE Counterflange Adaptor made of Steel S355J2 or equivalent, blank (oiled) CSG-...-ST-*/**/-W1
- * SAE Flange Adaptor (without O-ring) made of Stainless Steel V4A – 1.4404 (on request) CAG-...-ST-*/**/-W5
- * Kit with DB including Metric bolts 10.9, spring rings, O-ring made of NBR (Buna-N®) CAG-...-ST-*/**/-W129-K
- * Kit with DB including Metric bolts 10.9, spring rings, O-ring made of FKM (Viton®) CAG-...-ST-*/**/-V-W129-K
- * Kit with DB including UNC bolts (Grade 8), spring rings, O-ring made of NBR (Buna-N®) CAG-...-ST-*/**/-U-W129-K
- * Kit with BM including Metric bolts 10.9, spring rings, O-ring made of NBR (Buna-N®) CAG-...-ST-*/**/-BM-W129-K

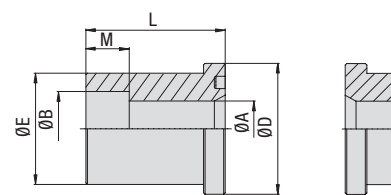
Please always indicate ØB / ØA.

**SAE Socket-Weld Flange / Counterflange Adaptor
Type CAG/CSG-ES - 3000 PSI Series**

B



Version A (CAG) - not for use with SAE Flange Clamps BM



Version B (CAG / CSG)

3000 PSI Standard Pressure Series (according to ISO 6162-1:2012)

Nominal Size	DN	(in)	PN ¹ (bar/PSI)	Dimensions (mm/in)					Version	Weight (kg/lbs) ca. per 100	Ordering Codes	
				10.9	ØA	ØB	ØD	ØE				M
13	1/2		350	12	16,5	30,2	24	12	35	B	11,0	CAG-301-ES-16.5/12-W1
			5075	.47	.65	1.19	.94	.47	1.38		24.20	
13	1/2		350	12	17,6	30,2	24	12	35	B	99,0	CAG-301-ES-17.6/12-W1
			5075	.47	.69	1.19	.94	.47	1.38		217.80	
13	1/2		350	15	20,5	30,2	30	13	60	A	15,7	CAG-301-ES-20.5/15-W1
			5075	.59	.81	1.19	1.18	.51	2.36		34.54	
13	1/2		350	15	21,7	30,2	30	13	60	A	15,8	CAG-301-ES-21.7/15-W1
			5075	.59	.85	1.19	1.18	.51	2.36		34.76	
19	3/4		350	13	20,5	38,1	31,5	12	40	B	18,4	CAG-302-ES-20.5/13-W1
			5075	.51	.81	1.50	1.24	.47	1.57		40.49	
19	3/4		350	13	21,7	38,1	31,5	13	40	B	18,4	CAG-302-ES-21.7/13-W1
			5075	.51	.85	1.50	1.24	.51	1.57		40.49	
19	3/4		350	19	25,5	38,1	35	13	68	A	28,2	CAG-302-ES-25.5/19-W1
			5075	.75	1.00	1.50	1.38	.51	2.68		62.04	
19	3/4		350	19	27,3	38,1	35	13	68	A	27,1	CAG-302-ES-27.3/19-W1
			5075	.75	1.07	1.50	1.38	.51	2.68		59.62	
25	1		345	19	27,3	44,45	38	14	45	B	40,0	CAG-303-ES-27.3/19-W1
			5003	.75	1.07	1.75	1.50	.55	1.77		88.00	
25	1		345	23	30,5	44,45	44	16	75	A	46,1	CAG-303-ES-30.5/23-W1
			5003	.91	1.20	1.75	1.73	.63	2.95		101.42	
25	1		345	25	34	44,45	44	16	75	A	46,0	CAG-303-ES-34/25-W1
			5003	.98	1.34	1.75	1.73	.63	2.95		101.20	
32	1-1/4		280	25	30,5	50,8	43	16	50	B	36,0	CAG-304-ES-30.5/25-W1
			4061	.98	1.20	2.00	1.69	.63	1.97		79.20	
32	1-1/4		280	25	34	50,8	43	16	50	B	32,0	CAG-304-ES-34/25-W1
			4061	.98	1.34	2.00	1.69	.63	1.97		70.40	
32	1-1/4		280	32	38,5	50,8	55	18	95	A	64,0	CAG-304-ES-38.5/32-W1
			4061	1.26	1.52	2.00	2.17	.71	3.74		140.80	
32	1-1/4		280	32	43	50,8	55	18	95	A	60,0	CAG-304-ES-43/32-W1
			4061	1.26	1.69	2.00	2.17	.71	3.74		132.00	
38	1-1/2		210	32	38,5	60,3	50	18	55	B	44,0	CAG-305-ES-38.5/32-W1
			3045	1.26	1.52	2.37	1.97	.71	2.17		96.80	
38	1-1/2		210	32	43	60,3	50	18	55	B	46,0	CAG-305-ES-43/32-W1
			3045	1.26	1.69	2.37	1.97	.71	2.17		101.20	
38	1-1/2		210	38	49	60,3	63	20	100	A	82,5	CAG-305-ES-49/38-W1
			3045	1.50	1.93	2.37	2.48	.79	3.94		181.50	
38	1-1/2		210	38	50,4	60,3	63	20	100	A	80,9	CAG-305-ES-50.4/38-W1
			3045	1.50	1.98	2.37	2.48	.79	3.94		177.98	
51	2		210	38	49	71,4	61,8	20	65	B	174,0	CAG-306-ES-49/38-W1
			3045	1.50	1.93	2.81	2.43	.79	2.56		382.80	
51	2		210	38	50,7	71,4	61,8	20	65	B	174,0	CAG-306-ES-50.7/38-W1
			3045	1.50	2.00	2.81	2.43	.79	2.56		382.80	
51	2		210	50	61	71,4	79	22	107	A	119,7	CAG-306-ES-61/50-W1
			3045	1.97	2.40	2.81	3.11	.87	4.21		263.34	

Please see Page 89 for separate Bolt Sets and Sealings.

Materials / Ordering Options / Examples

- * SAE Flange Adaptor (without O-ring) made of Steel S355J2 or equivalent, blank (oiled)
- * SAE Counterflange Adaptor made of Steel S355J2 or equivalent, blank (oiled)
- * SAE Flange Adaptor (without O-ring) made of Stainless Steel V4A – 1.4571 (on request)

CAG-...-ES-...-W1
CSG-...-ES-...-W1
CAG-...-ES-...-W5

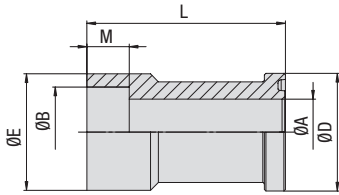
- * Kit with DB including Metric bolts 10.9, spring rings, O-ring made of NBR (Buna-N®)
- * Kit with DB including Metric bolts 10.9, spring rings, O-ring made of FKM (Viton®)
- * Kit with DB including UNC bolts (Grade 8), spring rings, O-ring made of NBR (Buna-N®)

CAG-...-ES-...-W129-K
CAG-...-ES-...-V-W129-K
CAG-...-ES-...-U-W129-K

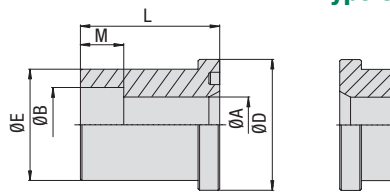
Please always indicate ØB / ØA.

¹ The maximum working pressure PN (bar/PSI) applies only to the flange itself and depends on the bolts used (Grade 10.9). The actual maximum working pressure depends on the thickness and the quality of the tube used.

SAE Socket-Weld Flange / Counterflange Adaptor
Type CAG/CSG-ES - 3000 / 6000 PSI Series



Version A (CAG) - not for use with SAE Flange Clamps BM



Version B (CAG / CSG)



B

3000 PSI Standard Pressure Series (according to ISO 6162-1:2012)

Nominal Size		PN ¹ (bar/PSI)	Dimensions (mm/in)						Weight (^{kg} /lbs) ca. per 100	Ordering Codes
DN	(in)	10.9	ØA	ØB	ØD	ØE	M	L	Version	
64	2-1/2	175	47	61	84,1	73,8	22	75	B	79,0
		2538	1.85	2.40	3.31	2.91	.87	2.95		173.80
64	2-1/2	175	58	77	84,1	98	24	130	A	215,9
		2538	2.28	3.03	3.31	3.86	.94	5.12		474.98
76	3	160	58	77	101,6	90	24	85	B	108,0
		2320	2.28	3.03	4.00	3.54	.94	3.35		237.60
76	3	160	70	90,5	101,6	116	28	150	A	372,0
		2320	2.76	3.56	4.00	4.57	1.10	5.91		818.40

6000 PSI High Pressure Series (according to ISO 6162-2:2012)

Nominal Size		PN ¹ (bar/PSI)	Dimensions (mm/in)						Weight (^{kg} /lbs) ca. per 100	Ordering Codes
DN	(in)	10.9	ØA	ØB	ØD	ØE	M	L	Version	
13	1/2	420	11	16,5	31,8	24	13	35	B	12,5
		6090	.43	.65	1.25	.94	.51	1.38		27.48
13	1/2	420	11	17,6	31,8	24	13	35	B	12,5
		6090	.43	.69	1.25	.94	.51	1.38		27.48
13	1/2	420	15	20,5	31,8	32	13	60	A	19,7
		6090	.59	.81	1.25	1.26	.51	2.36		43.34
13	1/2	420	15	21,7	31,8	32	13	60	A	18,8
		6090	.59	.85	1.25	1.26	.51	2.36		41.36
19	3/4	420	13	20,5	41,3	31,8	13	40	B	19,0
		6090	.51	.81	16.26	1.25	.51	1.57		41.80
19	3/4	420	13	21,7	41,3	31,8	13	40	B	20,1
		6090	.51	.85	16.26	1.25	.51	1.57		44.22
19	3/4	420	19	25,7	41,3	40	13	68	A	36,1
		6090	.75	1.01	1.63	1.57	.51	2.68		79.42
19	3/4	420	19	27,3	41,3	40	13	68	A	35,4
		6090	.75	1.07	1.63	1.57	.51	2.68		77.88
25	1	420	17,5	27,3	47,6	38	13	45	B	35,9
		6090	.69	1.07	1.87	1.50	.51	1.77		79.04
25	1	420	25	34	47,6	48	16	75	A	48,0
		6090	.98	1.34	1.87	1.89	.63	2.95		105.60
32	1-1/4	420	22	34	54	44	16	50	B	52,4
		6090	.87	1.34	2.13	1.73	.63	1.97		115.28

Please see Page 89 for separate Bolt Sets and Sealings.

¹ The maximum working pressure PN (bar/PSI) applies only to the flange itself and depends on the bolts used (Grade 10.9). The actual maximum working pressure depends on the thickness and the quality of the tube used.

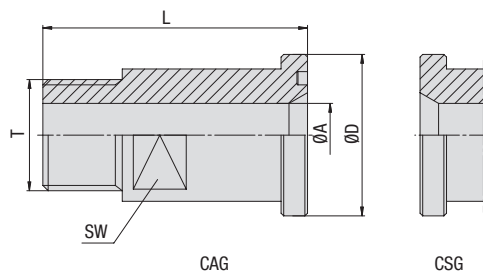
² According to ISO 6162-2 bolts M12 should be used. Since typically bolts M14 are used, the description of the complete part must show M14 (e.g. CAG-604-ES-34/22-M14-W129-K).

Materials / Ordering Options / Examples

- * SAE Flange Adaptor (without O-ring) made of Steel S355J2 or equivalent, blank (oiled) CAG-...-ES-*/**-W1
- * SAE Counterflange Adaptor made of Steel S355J2 or equivalent, blank (oiled) CSG-...-ES-*/**-W1
- * SAE Flange Adaptor (without O-ring) made of Stainless Steel V4A – 1.4571 (on request) CAG-...-ES-*/**-W5
- * Kit with DB including Metric bolts 10.9, spring rings, O-ring made of NBR (Buna-N®) CAG-...-ES-*/**-W129-K
- * Kit with DB including Metric bolts 10.9, spring rings, O-ring made of FKM (Viton®) CAG-...-ES-*/**-V-W129-K
- * Kit with DB including UNC bolts (Grade 8), spring rings, O-ring made of NBR (Buna-N®) CAG-...-ES-*/**-U-W129-K

Please always indicate ØB / ØA.

SAE Flange / Counterflange Adaptor with Male BSPT Thread Type CAG/CSG-T • 3000 PSI Series



3000 PSI Standard Pressure Series (according to ISO 6162-1:2012)

Nominal Size		PN ¹ (bar/PSI)	Dimensions (mm/in)		L	SW	T (BSPT)	Weight (^{kg} /lbs) ca. per 100	Ordering Codes
DN	(in)	10.9	ØA	ØD					
13	1/2	300	12	30,2	50	19	1/2	13,0	CAG-301-T-W66
		4350	.47	1.19	1.97	.75		28.60	
13	1/2	300	10	30,2	50	19	3/8 (06)	13,0	CAG-301-T06-W66
		4350	.39	1.19	1.97	.75		28.60	
19	3/4	300	17	38,1	55	27	3/4	18,2	CAG-302-T-W66
		4350	.67	1.50	2.17	1.06		40.04	
19	3/4	300	12	38,1	55	27	1/2 (08)	18,2	CAG-302-T08-W66
		4350	.47	1.50	2.17	1.06		40.04	
25	1	320	22	44,45	60	32	1	40,0	CAG-303-T-W66
		4641	.87	1.75	2.36	1.26		88.00	
25	1	320	17	44,45	60	32	3/4 (12)	40,0	CAG-303-T12-W66
		4641	.67	1.75	2.36	1.26		88.00	
32	1-1/4	250	27	50,8	65	41	1-1/4	43,7	CAG-304-T-W66
		3625	1.06	2.00	2.56	1.61		96.14	
32	1-1/4	250	22	50,8	65	41	1 (16)	44,0	CAG-304-T16-W66
		3625	.87	2.00	2.56	1.61		96.80	
38	1-1/2	210	32	60,3	70	46	1-1/2	61,5	CAG-305-T-W66
		3045	1.26	2.37	2.76	1.81		135.30	
38	1-1/2	210	27	60,3	70	46	1-1/4 (20)	61,5	CAG-305-T20-W66
		3045	1.06	2.37	2.76	1.81		135.30	
51	2	210	40	71,4	75	55	2	100,7	CAG-306-T-W66
		3045	1.57	2.81	2.95	2.17		221.54	
51	2	210	30	71,4	75	55	1-1/2 (24)	45,0	CAG-306-T24-W66
		3045	1.18	2.81	2.95	2.17		99.00	

Please see Page 89 for separate Bolt Sets and Sealings.

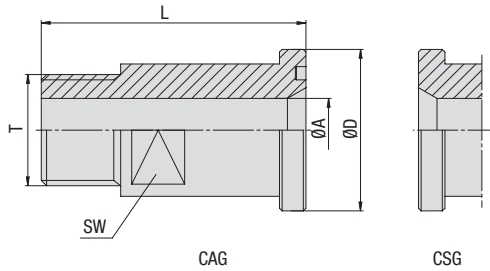
Materials / Ordering Options / Examples

- * SAE Flange Adaptor (without O-ring) made of Steel S355J2 or equivalent, zinc-plated and thick-film-passivated **CAG-...-T-W66**
- * SAE Counterflange Adaptor made of Steel S355J2 or equivalent, zinc-plated and thick-film-passivated **CSG-...-T-W66**
- * SAE Flange Adaptor (without O-ring) made of Stainless Steel V4A – 1.4571 (on request) **CAG-...-T-W5**

- * Size of connection thread deviating from the standard (e.g. 1/2 BSPT) **CAG-...-T08-W66**

- * Kit with DB including Metric bolts 10.9, spring rings, O-ring made of NBR (Buna-N®) **CAG-...-T-W130-K**
- * Kit with DB including Metric bolts 10.9, spring rings, O-ring made of FKM (Viton®) **CAG-...-T-V-W130-K**
- * Kit with DB including UNC bolts (Grade 8), spring rings, O-ring made of NBR (Buna-N®) **CAG-...-T-U-W130-K**

¹ The maximum working pressure PN (bar/PSI) applies only to the flange itself and depends on the bolts used (Grade 10.9). The actual maximum working pressure depends on the thickness and the quality of the tube used.

**SAE Flange / Counterflange Adaptor with Male BSPT Thread
Type CAG/CSG-BSPT - 6000 PSI Series**

B
6000 PSI High Pressure Series (according to ISO 6162-2:2012)

Nominal Size		PN ¹ (bar/PSI)	Dimensions (mm/in)		L	SW	T (BSPT)	Weight (*9/10s) ca. per 100	Ordering Codes
DN	(in)	10.9	ØA	ØD					
13	1/2	350	12	31,8	50	19	1/2	12,5	CAG-601-T-W66
		5075	.47	1.25	1.97	.75		27.48	
13	1/2	350	10	31,8	50	19	3/8 (06)	12,5	CAG-601-T06-W66
		5075	.39	1.25	1.97	.75		27.48	
19	3/4	350	17	41,3	60	26	3/4	23,4	CAG-602-T-W66
		5075	.67	1.63	2.36	1.02		51.51	
19	3/4	350	12	41,3	60	26	1/2 (08)	23,4	CAG-602-T08-W66
		5075	.47	1.63	2.36	1.02		51.51	
25	1	350	22	47,6	70	32	1	35,9	CAG-603-T-W66
		5075	.87	1.87	2.76	1.26		79.04	
25	1	350	17	47,6	70	32	3/4 (12)	35,9	CAG-603-T12-W66
		5075	.67	1.87	2.76	1.26		79.04	
32	1-1/4	250	27	54	75	38	1-1/4	52,4	CAG-604-T-W66 ²
		3625	1.06	2.13	2.95	1.50		115.28	
32	1-1/4	250	22	54	75	38	1 (16)	52,4	CAG-604-T16-W66
		3625	.87	2.13	2.95	1.50		115.28	
38	1-1/2	250	30	63,5	80	41	1-1/2	76,0	CAG-605-T-W66
		3625	1.18	2.50	3.15	1.61		167.20	
38	1-1/2	250	27	63,5	80	41	1-1/4 (20)	76,0	CAG-605-T20-W66
		3625	1.06	2.50	3.15	1.61		167.20	
51	2	200	40	79,4	90	55	2	141,8	CAG-606-T-W66
		2900	1.57	3.13	3.54	2.17		311.96	
51	2	200	30	79,4	90	55	1-1/2 (24)	141,8	CAG-606-T24-W66
		2900	1.18	3.13	3.54	2.17		311.96	

Please see Page 89 for separate Bolt Sets and Sealings.

¹ The maximum working pressure PN (bar/PSI) applies only to the flange itself and depends on the bolts used (Grade 10.9). The actual maximum working pressure depends on the thickness and the quality of the tube used.

² According to ISO 6162-2 bolts M12 should be used but because usually bolts M14 are used the description of the complete part must show M14 (e.g. CAG-604-T-M14-W130-K).

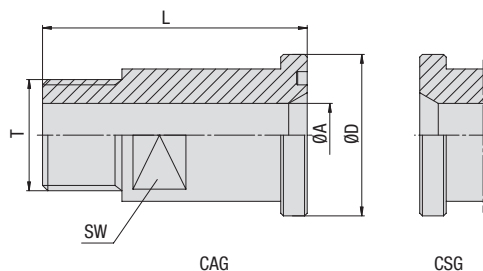
Materials / Ordering Options / Examples

- * SAE Flange Adaptor (without O-ring) made of Steel S355J2 or equivalent, zinc-plated and thick-film-passivated **CAG-...-T-W66**
- * SAE Counterflange Adaptor made of Steel S355J2 or equivalent, zinc-plated and thick-film-passivated **CSG-...-T-W66**
- * SAE Flange Adaptor (without O-ring) made of Stainless Steel V4A – 1.4571 (on request) **CAG-...-T-W5**

- * Size of connection thread deviating from the standard (e.g. 1/2 BSPT) **CAG-...-T08-W66**

- * Kit with DB including Metric bolts 10.9, spring rings, O-ring made of NBR (Buna-N®) **CAG-...-T-W130-K**
- * Kit with DB including Metric bolts 10.9, spring rings, O-ring made of FKM (Viton®) **CAG-...-T-V-W130-K**
- * Kit with DB including UNC bolts (Grade 8), spring rings, O-ring made of NBR (Buna-N®) **CAG-...-T-U-W130-K**

SAE Flange / Counterflange Adaptor with Male NPT Thread Type CAG/CSG-N • 3000 PSI Series



3000 PSI Standard Pressure Series (according to ISO 6162-1:2012)

Nominal Size		PN ¹ (bar/PSI)	Dimensions (mm/in)		L	SW	T (NPT)	Weight (^{kg} /lbs) ca. per 100	Ordering Codes
DN	(in)	10.9	ØA	ØD					
13	1/2	300	12	30,2	50	19	1/2	13,0	CAG-301-N-W66
		4350	.47	1.19	1.97	.75		28.60	
13	1/2	300	10	30,2	50	19	3/8 (06)	13,0	CAG-301-N06-W66
		4350	.39	1.19	1.97	.75		28.60	
19	3/4	300	17	38,1	55	27	3/4	23,0	CAG-302-N-W66
		4350	.67	1.50	2.17	1.06		50.60	
19	3/4	300	12	38,1	55	27	1/2 (08)	23,0	CAG-302-N08-W66
		4350	.47	1.50	2.17	1.06		50.60	
25	1	320	22	44,45	60	32	1	28,0	CAG-303-N-W66
		4641	.87	1.75	2.36	1.26		61.60	
25	1	320	17	44,45	60	32	3/4 (12)	28,0	CAG-303-N12-W66
		4641	.67	1.75	2.36	1.26		61.60	
32	1-1/4	250	27	50,8	65	41	1-1/4	79,0	CAG-304-N-W66
		3625	1.06	2.00	2.56	1.61		173.80	
32	1-1/4	250	22	50,8	65	41	1 (16)	79,0	CAG-304-N16-W66
		3625	.87	2.00	2.56	1.61		173.80	
38	1-1/2	210	32	60,3	70	46	1-1/2	62,0	CAG-305-N-W66
		3045	1.26	2.37	2.76	1.81		136.40	
38	1-1/2	210	27	60,3	70	46	1-1/4 (20)	62,0	CAG-305-N20-W66
		3045	1.06	2.37	2.76	1.81		136.40	
51	2	210	40	71,4	75	55	2	95,8	CAG-306-N-W66
		3045	1.57	2.81	2.95	2.17		210.76	
51	2	210	30	71,4	75	55	1-1/2 (24)	171,6	CAG-306-N24-W66
		3045	1.18	2.81	2.95	2.17		377.52	

Please see Page 89 for separate Bolt Sets and Sealings.

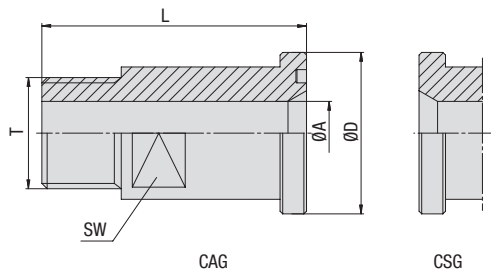
Materials / Ordering Options / Examples

- * SAE Flange Adaptor (without O-ring) made of Steel S355J2 or equivalent, zinc-plated and thick-film-passivated **CAG-...-N-W66**
- * SAE Counterflange Adaptor made of Steel S355J2 or equivalent, zinc-plated and thick-film-passivated **CSG-...-N-W66**
- * SAE Flange Adaptor (without O-ring) made of Stainless Steel V4A – 1.4571 (on request) **CAG-...-N-W5**

- * Size of connection thread deviating from the standard (e.g. 1/2 NPT) **CAG-...-N08-W66**

- * Kit with DB including Metric bolts 10.9, spring rings, O-ring made of NBR (Buna-N®) **CAG-...-N-W130-K**
- * Kit with DB including Metric bolts 10.9, spring rings, O-ring made of FKM (Viton®) **CAG-...-N-V-W130-K**
- * Kit with DB including UNC bolts (Grade 8), spring rings, O-ring made of NBR (Buna-N®) **CAG-...-N-U-W130-K**

¹ The maximum working pressure PN (bar/PSI) applies only to the flange itself and depends on the bolts used (Grade 10.9). The actual maximum working pressure depends on the thickness and the quality of the tube used.

**SAE Flange Adaptor / Counterflange with Male NPT Thread
Type CAG/CSG-NPT • 6000 PSI Series**

B
6000 PSI High Pressure Series (according to ISO 6162-2:2012)

Nominal Size		PN ¹ (bar/PSI)	Dimensions (mm/in)		L	SW	T (NPT)	Weight (*9/10s) ca. per 100	Ordering Codes
DN	(in)	10.9	ØA	ØD					
13	1/2	350	12	31,8	50	19	1/2	13,0	CAG-601-N-W66
		5075	.47	1.25	1.97	.75		28.60	
13	1/2	350	10	31,8	50	19	3/8 (06)	13,0	CAG-601-N06-W66
		5075	.39	1.25	1.97	.75		28.60	
19	3/4	350	17	41,3	60	26	3/4	23,0	CAG-602-N-W66
		5075	.67	1.63	2.36	1.02		50.60	
19	3/4	350	12	41,3	60	26	1/2 (08)	23,0	CAG-602-N08-W66
		5075	.47	1.63	2.36	1.02		50.60	
25	1	350	22	47,6	70	32	1	55,6	CAG-603-N-W66
		5075	.87	1.87	2.76	1.26		122.32	
25	1	350	17	47,6	70	32	3/4 (12)	55,6	CAG-604-N12-W66
		5075	.67	1.87	2.76	1.26		122.32	
32	1-1/4	250	27	54	75	38	1-1/4	56,6	CAG-604-N-W66 ²
		3625	1.06	2.13	2.95	1.50		124.46	
32	1-1/4	250	22	54	75	38	1 (16)	56,6	CAG-604-N16-W66
		3625	.87	2.13	2.95	1.50		124.46	
38	1-1/2	250	30	63,5	80	41	1-1/2	76,7	CAG-605-N-W66
		3625	1.18	2.50	3.15	1.61		168.74	
38	1-1/2	250	27	63,5	80	41	1-1/4 (20)	83,2	CAG-605-N20-W66
		3625	1.06	2.50	3.15	1.61		183.03	
51	2	200	40	79,4	90	55	2	174,6	CAG-606-N-W66
		2900	1.57	3.13	3.54	2.17		384.12	
51	2	200	30	79,4	90	55	1-1/2 (24)	174,6	CAG-606-N24-W66
		2900	1.18	3.13	3.54	2.17		384.12	

Please see Page 89 for separate Bolt Sets and Sealings.

¹ The maximum working pressure PN (bar/PSI) applies only to the flange itself and depends on the bolts used (Grade 10.9). The actual maximum working pressure depends on the thickness and the quality of the tube used.

² According to ISO 6162-2 bolts M12 should be used but because usually bolts M14 are used the description of the complete part must show M14 (e.g. CAG-604-N-M14-W130-K).

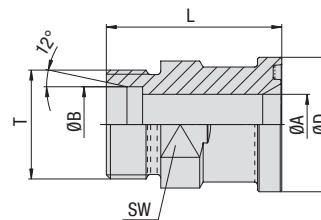
Materials / Ordering Options / Examples

- * SAE Flange Adaptor (without O-ring) made of Steel S355J2 or equivalent, zinc-plated and thick-film-passivated **CAG-...-N-W66**
- * SAE Counterflange Adaptor made of Steel S355J2 or equivalent, zinc-plated and thick-film-passivated **CSG-...-N-W66**
- * SAE Flange Adaptor (without O-ring) made of Stainless Steel V4A – 1.4571 (on request) **CAG-...-N-W5**

- * Size of connection thread deviating from the standard (e.g. 1/2 NPT) **CAG-...-N08-W66**

- * Kit with DB including Metric bolts 10.9, spring rings, O-ring made of NBR (Buna-N®) **CAG-...-N-W130-K**
- * Kit with DB including Metric bolts 10.9, spring rings, O-ring made of FKM (Viton®) **CAG-...-N-V-W130-K**
- * Kit with DB including UNC bolts (Grade 8), spring rings, O-ring made of NBR (Buna-N®) **CAG-...-N-U-W130-K**

SAE Flange Adaptor with Male Metric Thread and 24° Conical Bore (acc. to ISO 8434-1) Type CAG-L/S • 3000 PSI Series



3000 PSI Standard Pressure Series (according to ISO 6162-1:2012)

Nominal Size	DN	(in)	PN ¹ (bar/PSI)	Dimensions (mm/in)		Series	ØD	L	SW	T (Metric)	Weight (kg/lbs) ca. per 100	Ordering Codes
				10.9	ØA							
13	1/2		350	12	15	L	30,2	48	24	22x1,5	12,6	CAG-301-15L-W66
			5075	.47	.59		1.19	1.89	.94	27.72		
13	1/2		350	12	16	S	30,2	50	24	24x1,5	13,0	CAG-301-16S-W66
			5075	.47	.63		1.19	1.97	.94	28.60		
19	3/4		350	15	18	L	38,1	53	30	26x1,5	23,1	CAG-302-18L-W66
			5075	.59	.71		1.50	2.09	1.18	50.71		
19	3/4		350	16	20	S	38,1	57	30	30x2	24,2	CAG-302-20S-W66
			5075	.63	.79		1.50	2.24	1.18	53.24		
19	3/4		250	19	22	L	38,1	53	30	30x2	20,1	CAG-302-22L-W66
			3625	.75	.87		1.50	2.09	1.18	44.11		
19	3/4		350	17	25	S	38,1	57	30	36x2	25,6	CAG-302-25S-W66
			5075	.67	.98		1.50	2.24	1.18	56.36		
19	3/4		160	19	28	L	38,1	53	30	36x2	21,7	CAG-302-28L-W66
			2320	.75	1.10		1.50	2.09	1.18	47.81		
25	1		345	20	25	S	44,45	58	36	36x2	34,5	CAG-303-25S-W66
			5003	.79	.98		1.75	2.28	1.42	75.90		
25	1		250	24	28	L	44,45	54	36	36x2	28,3	CAG-303-28L-W66
			3625	.94	1.10		1.75	2.13	1.42	62.26		
25	1		345	24	30	S	44,45	63	36	42x2	35,2	CAG-303-30S-W66
			5003	.94	1.18		1.75	2.48	1.42	77.44		
32	1-1/4		280	20	25	S	50,8	60	41	36x2	46,6	CAG-304-25S-W66
			4061	.79	.98		2.00	2.36	1.61	102.52		
32	1-1/4		250	22	28	L	50,8	59	41	36x2	43,5	CAG-304-28L-W66
			3625	.87	1.10		2.00	2.32	1.61	95.80		
32	1-1/4		280	25	30	S	50,8	62	41	42x2	44,8	CAG-304-30S-W66
			4061	.98	1.18		2.00	2.44	1.61	98.56		
32	1-1/4		250	30	35	L	50,8	58	41	45x2	35,9	CAG-304-35L-W66
			3625	1.18	1.38		2.00	2.28	1.61	78.98		
32	1-1/4		280	28	38	S	50,8	67	46	52x2	54,4	CAG-304-38S-W66
			4061	1.10	1.50		2.00	2.64	1.81	119.68		
38	1-1/2		210	32	38	S	60,35	70	46	52x2	62,3	CAG-305-38S-W66
			3045	1.26	1.50		2.38	2.76	1.81	137.06		
38	1-1/2		210	36	42	L	60,35	64	46	52x2	47,7	CAG-305-42L-W66
			3045	1.42	1.65		2.38	2.52	1.81	104.90		

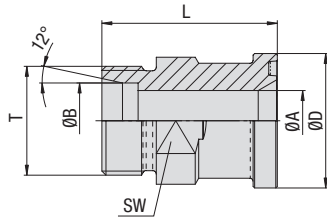
Please see Page 89 for separate Bolt Sets and Sealings.

Materials / Ordering Options / Examples

- * SAE Flange Adaptor (without O-ring) made of Steel S355J2 or equivalent, zinc-plated and thick-film-passivated **CAG-...-...-W66**
- * SAE Flange Adaptor (without O-ring) made of Steel S355J2 / C45 or equivalent, zinc/nickel-plated (on request) **CAG-...-...-W3**
- * SAE Flange Adaptor (without O-ring) made of Stainless Steel V4A – 1.4571 (on request) **CAG-...-...-W5**
- * Kit with DB including Metric bolts 10.9, spring rings, O-ring made of NBR (Buna-N®) **CAG-...-...-W130-K**
- * Kit with DB including Metric bolts 10.9, spring rings, O-ring made of FKM (Viton®) **CAG-...-...-V-W130-K**
- * Kit with DB including UNC bolts (Grade 8), spring rings, O-ring made of NBR (Buna-N®) **CAG-...-...-U-W130-K**

Please always indicate ØB and Series.

¹ The maximum working pressure PN (bar/PSI) applies only to the flange itself and depends on the bolts used (Grade 10.9). The actual maximum working pressure depends on the thickness and the quality of the tube used.

SAE Flange Adaptor with Male Metric Thread and 24° Conical Bore (acc. to ISO 8434-1)
 Type CAG-L/S • 6000 PSI Series


B

6000 PSI High Pressure Series (according to ISO 6162-2:2012)

Nominal Size		PN ¹ (bar/PSI)	Dimensions (mm/in)		Series	ØD	L	SW	T (Metric)	Weight (kg/lbs) ca. per 100	Ordering Codes
DN	(in)	10.9	ØA	ØB							
13	1/2	420	12	16	S	31,8	53	24	24x1,5	1,5	CAG-601-16S-W66
		6090	.47	.63		1.25	2.09	.94		3.30	
19	3/4	420	12	16	S	41,3	59	30	24x1,5	29,5	CAG-602-16S-W66
		6090	.47	.63		1.63	2.32	1.18		64.90	
19	3/4	400	16	20	S	41,3	61	30	30x2	28,5	CAG-602-20S-W66
		5800	.63	.79		1.63	2.40	1.18		62.74	
19	3/4	400	17	25	S	41,3	63	30	36x2	30,4	CAG-602-25S-W66
		5800	.67	.98		1.63	2.48	1.18		66.84	
19	3/4	400	18	30	S	41,3	64	36	42x2	36,8	CAG-602-30S-W66
		5800	.71	1.18		1.63	2.52	1.42		80.96	
25	1	400	20	25	S	47,6	72	36	36x2	49,8	CAG-603-25S-W66
		5800	.79	.98		1.87	2.83	1.42		109.56	
25	1	400	24	30	S	47,6	74	36	42x2	47,7	CAG-603-30S-W66
		5800	.94	1.18		1.87	2.91	1.42		104.94	
32	1-1/4	400	25	30	S	54	79	41	42x2	62,1	CAG-604-30S-W66 ²
		5800	.98	1.18		2.13	3.11	1.61		136.62	
32	1-1/4	400	30	38	S	54	83	46	52x2	66,1	CAG-604-38S-W66 ²
		5800	1.18	1.50		2.13	3.27	1.81		145.42	
38	1-1/2	400	30	38	S	63,5	89	46	52x2	92,2	CAG-605-38S-W66
		5800	1.18	1.50		2.50	3.50	1.81		202.77	

Please see Page 89 for separate Bolt Sets and Sealings.

¹ The maximum working pressure PN (bar/PSI) applies only to the flange itself and depends on the bolts used (Grade 10.9). The actual maximum working pressure depends on the thickness and the quality of the tube used.

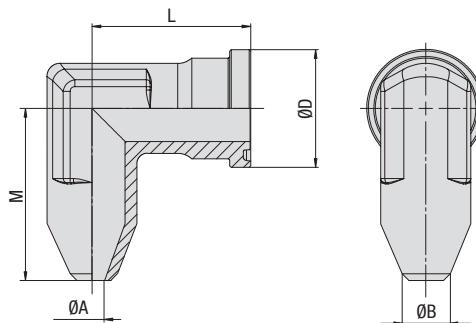
² According to ISO 6162-2 bolts M12 should be used but because usually bolts M14 are used the description of the complete part must show M14 (e.g. CAG-604-30S-M14-W130-K).

Materials / Ordering Options / Examples

- * SAE Flange Adaptor (without O-ring) made of Steel S355J2 or equivalent, zinc-plated and thick-film-passivated CAG-...-...-W66
- * SAE Flange Adaptor (without O-ring) made of Steel S355J2 / C45 or equivalent, zinc/nickel-plated (on request) CAG-...-...-W3
- * SAE Flange Adaptor (without O-ring) made of Stainless Steel V4A – 1.4571 (on request) CAG-...-...-W5
- * Kit with DB including Metric bolts 10.9, spring rings, O-ring made of NBR (Buna-N®) CAG-...-...-W130-K
- * Kit with DB including Metric bolts 10.9, spring rings, O-ring made of FKM (Viton®) CAG-...-...-V-W130-K
- * Kit with DB including UNC bolts (Grade 8), spring rings, O-ring made of NBR (Buna-N®) CAG-...-...-U-W130-K

Please always indicate ØB and Series.

**SAE 90° Butt-Weld Flange Adaptor
Type CAG90-ST • 3000 PSI Series**



3000 PSI Standard Pressure Series (according to ISO 6162-1:2012)

Nominal Size	DN	(in)	PN ¹		Dimensions			Weight (kg/lbs) ca. per 100	Ordering Codes	
			(bar/PSI)	(mm/in)	ØA	ØB	ØD			L
13	1/2		350	11	15	30,2	39	38	16,0	CAG90-301-ST-15/11-W1
			5075	.43	.59	1.19	1.54	1.50	35.20	
13	1/2		350	12	16	30,2	39	38	17,9	CAG90-301-ST-16/12-W1
			5075	.47	.63	1.19	1.54	1.50	39.34	
13	1/2		350	14	21,3	30,2	39	38	17,0	CAG90-301-ST-21.3/14-W1
			5075	.55	.84	1.19	1.54	1.50	37.40	
19	3/4		350	15	18	38,1	42	45	66,0	CAG90-302-ST-18/15-W1
			5075	.59	.71	1.50	1.65	1.77	145.20	
19	3/4		350	14	20	38,1	42	45	35,4	CAG90-302-ST-20/14-W1
			5075	.55	.79	1.50	1.65	1.77	77.96	
19	3/4		350	16	22	38,1	42	45	29,0	CAG90-302-ST-22/16-W1
			5075	.63	.87	1.50	1.65	1.77	63.80	
19	3/4		350	19	26,9	38,1	42	45	30,0	CAG90-302-ST-26.9/19-W1
			5075	.75	1.06	1.50	1.65	1.77	66.00	
25	1		345	19	25	44,45	45	50	82,1	CAG90-303-ST-25/19-W1
			5003	.75	.98	1.75	1.77	1.97	180.62	
25	1		345	22	30	44,45	45	50	50,3	CAG90-303-ST-30/22-W1
			5003	.87	1.18	1.75	1.77	1.97	110.66	
25	1		345	25	33,7	44,45	45	50	41,0	CAG90-303-ST-33.7/25-W1
			5003	.98	1.33	1.75	1.77	1.97	90.20	
32	1-1/4		280	19	25	50,8	50	59	117,2	CAG90-304-ST-25/19-W1
			4061	.75	.98	2.00	1.97	2.32	257.84	
32	1-1/4		280	22	30	50,8	50	59	35,0	CAG90-304-ST-30/22-W1
			4061	.87	1.18	2.00	1.97	2.32	77.00	
32	1-1/4		280	31	35	50,8	50	59	52,4	CAG90-304-ST-35/31-W1
			4061	1.22	1.38	2.00	1.97	2.32	115.28	
32	1-1/4		280	28	38	50,8	50	59	97,0	CAG90-304-ST-38/28-W1
			4061	1.10	1.50	2.00	1.97	2.32	213.40	
32	1-1/4		280	32	42,4	50,8	50	59	71,0	CAG90-304-ST-42.4/32-W1
			4061	1.26	1.67	2.00	1.97	2.32	156.20	
38	1-1/2		210	28	38	60,35	76	56	75,0	CAG90-305-ST-38/28-W1
			3045	1.10	1.50	2.38	2.99	2.20	165.00	
38	1-1/2		210	36	42	60,35	76	56	70,9	CAG90-305-ST-42/36-W1
			3045	1.42	1.65	2.38	2.99	2.20	155.98	
38	1-1/2		210	38	48,3	60,35	76	56	65,0	CAG90-305-ST-48.3/38-W1
			3045	1.50	1.90	2.38	2.99	2.20	143.00	

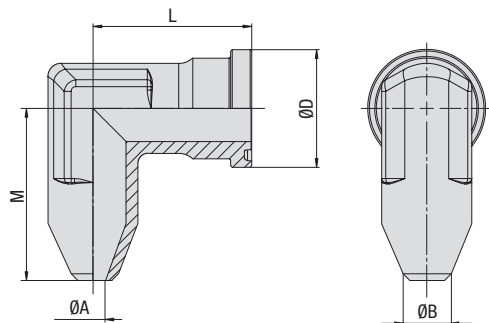
Please see Page 89 for separate Bolt Sets and Sealings.

Materials / Ordering Options / Examples

- * SAE Flange Adaptor (without O-ring) made of Steel S355J2 or equivalent, blank (oiled) **CAG90-...-ST-**-**-W1**
- * SAE Flange Adaptor (without O-ring) made of Stainless Steel V4A – 1.4404 (on request) **CAG90-...-ST-**-**-W5**
- * Kit with DB including Metric bolts 10.9, spring rings, O-ring made of NBR (Buna-N®) **CAG90-...-ST-**-**-W129-K**
- * Kit with DB including Metric bolts 10.9, spring rings, O-ring made of FKM (Viton®) **CAG90-...-ST-**-**-V-W129-K**
- * Kit with DB including UNC bolts (Grade 8), spring rings, O-ring made of NBR (Buna-N®) **CAG90-...-ST-**-**-U-W129-K**

Please always indicate ØB / ØA.

¹ The maximum working pressure PN (bar/PSI) applies only to the flange itself and depends on the bolts used (Grade 10.9). The actual maximum working pressure depends on the thickness and the quality of the tube used.

**SAE 90° Butt-Weld Flange Adaptor
Type CAG90-ST - 6000 PSI Series**

B
6000 PSI High Pressure Series (according to ISO 6162-2:2012)

Nominal Size		PN ¹ (bar/PSI)	Dimensions (mm/in)					Weight (kg/lbs) Ca. per 100	Ordering Codes
DN	(in)		10.9	ØA	ØB	ØD	L		
13	1/2	420	10	16	31,8	39	38	20,7	CAG90-601-ST-16/10-W1
		6090	.39	.63	1.25	1.54	1.50	45.54	
13	1/2	420	12	21,3	31,8	39	38	20,7	CAG90-601-ST-21.3/12-W1
		6090	.47	.84	1.25	1.54	1.50	45.54	
19	3/4	420	10	16	41,3	48	48	89,5	CAG90-602-ST-16/10-W1
		6090	.39	.63	1.63	1.89	1.89	196.90	
19	3/4	420	12	20	41,2	48	48	46,0	CAG90-602-ST-20/12-W1
		6090	.47	.79	1.62	1.89	1.89	101.15	
19	3/4	420	17	25	41,3	48	48	43,1	CAG90-602-ST-25/17-W1
		6090	.67	.98	1.63	1.89	1.89	94.82	
19	3/4	420	16	26,9	41,3	48	48	43,6	CAG90-602-ST-26.9/16-W1
		6090	.63	1.06	1.63	1.89	1.89	95.92	
25	1	420	17	25	47,6	60	60	73,0	CAG90-603-ST-25/17-W1
		6090	.67	.98	1.87	2.36	2.36	160.60	
25	1	420	22	60	47,6	60	60	74,9	CAG90-603-ST-30/22-W1
		6090	.87	1.18	1.87	2.36	2.36	164.78	
25	1	420	25	33,7	47,6	60	60	63,0	CAG90-603-ST-33.7/25-W1
		6090	.98	1.33	1.87	2.36	2.36	138.60	
25	1	420	21	33,7	47,6	60	60	69,1	CAG90-603-ST-33.7/21-W1
		6090	.83	1.33	1.87	2.36	2.36	152.02	
32	1-1/4	420	22	60	54	68	68	89,0	CAG90-604-ST-30/22-W1 ²
		6090	.87	1.18	2.13	2.68	2.68	195.80	
32	1-1/4	420	28	38	54	68	68	94,3	CAG90-604-ST-38/28-W1 ²
		6090	1.10	1.50	2.13	2.68	2.68	207.46	
32	1-1/4	420	60	42,4	54	68	68	92,1	CAG90-604-ST-42.4/30-W1 ²
		6090	1.18	1.67	2.13	2.68	2.68	202.62	
32	1-1/4	420	22	38	54	68	68	109,4	CAG90-604-ST-38/22-W1 ²
		6090	.87	1.50	2.13	2.68	2.68	240.68	
38	1-1/2	420	28	38	63,5	76	76	167,2	CAG90-605-ST-38/28-W1
		6090	1.10	1.50	2.50	2.99	2.99	367.84	
38	1-1/2	420	22	38	63,5	76	76	146,6	CAG90-605-ST-38/22-W1
		6090	.87	1.50	2.50	2.99	2.99	322.52	
38	1-1/2	420	34	48,3	63,6	76	76	148,6	CAG90-605-ST-48.3/34-W1
		6090	1.34	1.90	2.50	2.99	2.99	326.92	
38	1-1/2	420	32	48,3	63,5	76	76	148,6	CAG90-605-ST-48.3/32-W1
		6090	1.26	1.90	2.50	2.99	2.99	326.92	

Please see Page 89 for separate Bolt Sets and Sealings.

¹ The maximum working pressure PN (bar/PSI) applies only to the flange itself and depends on the bolts used (Grade 10.9). The actual maximum working pressure depends on the thickness and the quality of the tube used.

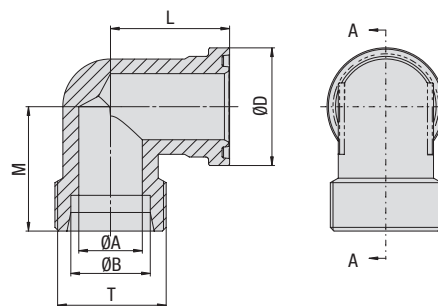
² According to ISO 6162-2 bolts M12 should be used but because usually bolts M14 are used the description of the complete part must show M14 (CAG90-604-ST-30/22-M14-W129-K).

Materials / Ordering Options / Examples

- * SAE Flange Adaptor (without O-ring) made of Steel S355J2 or equivalent, blank (oiled) **CAG90-...-ST-*/**/-W1**
- * SAE Flange Adaptor (without O-ring) made of Stainless Steel V4A – 1.4404 (on request) **CAG90-...-ST-*/**/-W5**
- * Kit with DB including Metric bolts 10.9, spring rings, O-ring made of NBR (Buna-N®) **CAG90-...-ST-*/**/-W129-K**
- * Kit with DB including Metric bolts 10.9, spring rings, O-ring made of FKM (Viton®) **CAG90-...-ST-*/**/-V-W129-K**
- * Kit with DB including UNC bolts (Grade 8), spring rings, O-ring made of NBR (Buna-N®) **CAG90-...-ST-*/**/-U-W129-K**

Please always indicate ØB / ØA.

SAE 90° Flange Adaptor with Male Metric Thread and 24° Conical Bore (acc. to ISO 8434-1) Type CAG90-L/S • 3000 PSI Series



3000 PSI Standard Pressure Series (according to ISO 6162-1:2012)

Nominal Size	DN	(in)	PN ¹ (bar/PSI)		Dimensions (mm/in)		Series	ØD	L	M	T (Metric)	Weight (kg/lbs) ca. per 100	Ordering Codes
			10.9	5075	ØA	ØB							
13	1/2		350	5075	12	15	L	30,2	39	36	22x1,5	16,4 36.08	CAG90-301-15L-W66
			350	5075	12	16	S	30,2	39	38	24x1,5	17,2 37.84	CAG90-301-16S-W66
19	3/4		350	5075	15	18	L	38,1	42	39	26x1,5	30,2 66.44	CAG90-302-18L-W66
			350	5075	16	20	S	38,1	42	43	30x2	33,4 73.48	CAG90-302-20S-W66
19	3/4		250	3625	19	22	L	38,1	42	41	30x2	28,8 63.36	CAG90-302-22L-W66
			350	5075	17	25	S	38,1	42	45	36x2	35,6 78.32	CAG90-302-25S-W66
25	1		345	5003	20	25	S	44,45	45	48,5	36x2	52,3 115.06	CAG90-303-25S-W66
			250	3625	24	28	L	44,45	45	45,5	36x2	40,7 89.54	CAG90-303-28L-W66
25	1		345	5003	24	30	S	44,45	45	50	42x2	47,2 103.84	CAG90-303-30S-W66
			280	4061	20	25	S	50,8	50	55	36x2	70,8 155.76	CAG90-304-25S-W66
32	1-1/4		280	4061	25	30	S	50,8	50	57	42x2	67,5 148.50	CAG90-304-30S-W66
			250	3625	30	35	L	50,8	50	57	45x2	56,5 124.30	CAG90-304-35L-W66
32	1-1/4		280	4061	28	38	S	50,8	50	59	52x2	71,5 157.30	CAG90-304-38S-W66
			210	3045	32	38	S	60,35	55	64	52x2	138,4 304.48	CAG90-305-38S-W66
38	1-1/2		210	3045	36	42	L	60,35	55	58	52x2	75,4 165.93	CAG90-305-42L-W66
			3045	1.42	1.65			2.38	2.17	2.28			

Please see Page 89 for separate Bolt Sets and Sealings.

Materials / Ordering Options / Examples

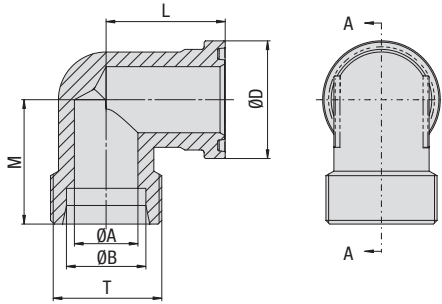
- * SAE Flange Adaptor (without O-ring) made of Steel S355J2 or equivalent, zinc-plated and thick-film-passivated **CAG90-...-W66**
- * SAE Flange Adaptor (without O-ring) made of Steel S355J2 / C45 or equivalent, zinc/nickel-plated (on request) **CAG90-...-W3**
- * SAE Flange Adaptor (without O-ring) made of Stainless Steel V4A – 1.4404 (on request) **CAG90-...-W5**

- * Kit with DB including Metric bolts 10.9, spring rings, O-ring made of NBR (Buna-N®) **CAG90-...-W130-K**
- * Kit with DB including Metric bolts 10.9, spring rings, O-ring made of FKM (Viton®) **CAG90-...-V-W130-K**
- * Kit with DB including UNC bolts (Grade 8), spring rings, O-ring made of NBR (Buna-N®) **CAG90-...-U-W130-K**

Please always indicate ØB and Series.

¹ The maximum working pressure PN (bar/PSI) applies only to the flange itself and depends on the bolts used (Grade 10.9). The actual maximum working pressure depends on the thickness and the quality of the tube used.

SAE 90° Flange Adaptor with Male Metric Thread and 24° Conical Bore (acc. to ISO 8434-1) Type CAG90-L/S • 6000 PSI Series


B

6000 PSI High Pressure Series (according to ISO 6162-2:2012)

Nominal Size		PN ¹ (bar/PSI)	Dimensions (mm/in)		S	ØD	L	M	T (Metric)	Weight (kg/lbs) ca. per 100	Ordering Codes
DN	(in)		10.9	ØA							
13	1/2	420	12	16	S	31,8	39	37,9	24x1,5	18,9	CAG90-601-16S-W66
		6090	.47	.63						1,25	
19	3/4	420	12	16	S	41,3	48	45	24x1,5	42,3	CAG90-602-16S-W66
		6090	.47	.63						1,63	
19	3/4	400	16	20	S	41,3	48	46	30x2	43,0	CAG90-602-20S-W66
		5800	.63	.79						1,63	
19	3/4	400	17	25	S	41,3	48	48	36x2	43,6	CAG90-602-25S-W66
		5800	.67	.98						1,63	
25	1	400	20	25	S	47,6	60	53	36x2	73,4	CAG90-603-25S-W66
		5800	.79	.98						1,87	
25	1	400	24	30	S	47,6	60	55	42x2	63,2	CAG90-603-30S-W66
		5800	.94	1,18						1,87	
32	1-1/4	400	25	30	S	54	68	58	42x2	89,3	CAG90-604-30S-W66 ²
		5800	.98	1,18						2,13	
32	1-1/4	400	30	38	S	54	68	61	52x2	88,7	CAG90-604-38S-W66 ²
		5800	1,18	1,50						2,13	
38	1-1/2	400	25	30	S	63,5	76	72	42x2	177,2	CAG90-605-30S-W66
		5800	.98	1,18						2,50	
38	1-1/2	400	30	38	S	63,5	76	72	52x2	147,1	CAG90-605-38S-W66
		5800	1,18	1,50						2,50	

Please see Page 89 for separate Bolt Sets and Sealings.

¹ The maximum working pressure PN (bar/PSI) applies only to the flange itself and depends on the bolts used (Grade 10.9). The actual maximum working pressure depends on the thickness and the quality of the tube used.

² According to ISO 6162-2 bolts M12 should be used but because usually bolts M14 are used the description of the complete part must show M14 (e.g. CAG90-604-30S-M14-W130-K).

Materials / Ordering Options / Examples

- * SAE Flange Adaptor (without O-ring) made of Steel S355J2 or equivalent, zinc-plated and thick-film-passivated **CAG90-...-...-W66**
- * SAE Flange Adaptor (without O-ring) made of Steel S355J2 / C45 or equivalent, zinc/nickel-plated (on request) **CAG90-...-...-W3**
- * SAE Flange Adaptor (without O-ring) made of Stainless Steel V4A – 1.4404 (on request) **CAG90-...-...-W5**

- * Kit with DB including Metric bolts 10.9, spring rings, O-ring made of NBR (Buna-N®) **CAG90-...-...-W130-K**
- * Kit with DB including Metric bolts 10.9, spring rings, O-ring made of FKM (Viton®) **CAG90-...-...-V-W130-K**
- * Kit with DB including UNC bolts (Grade 8), spring rings, O-ring made of NBR (Buna-N®) **CAG90-...-...-U-W130-K**

Please always indicate ØB and Series.