

STAUFF Clamps

Fastening systems for pipes, tubes, hoses, cables and other industrial components

Product Catalogue



	Introduction	112
	Clamp Body Multi-Line Clamps MLC (2 Lines)	114
	Clamp Body Multi-Line Clamps MLC (3 Lines)	115
	Clamp Body Multi-Line Clamps MLC (4 Lines)	116
	Clamp Body Multi-Line Clamps MLC (6 Lines)	117
	Single Weld Plate for Multi-Line Clamps SP-MLC	118
	Cover Plate for Multi-Line Clamps DP-MLC	119
	Hexagon Head Bolt AS	120
	Stacking Bolt AF	120
	Safety Locking Plate SIG	121
	Hexagon Rail Nut SM	122
	Mounting Rail TS	122
	Channel Rail Adaptor CRA	123
	Examples of Assembly	124

G



Product Description

Multi-Line Clamps of the Type MLC from STAUFF enable the simple and at the same time safe fastening of either 2, 3, 4 or 6 individual lines with only one clamp body.

Based on the Original STAUFF Clamps of the Standard Series according to DIN 3015 (Part 1), they are available in 3 different sizes for all common metric and imperial diameters from 6 mm to 25,4 mm (1/4" to 1"). Alternative outside diameters and various diameter combinations are available on request.

Clamp bodies are made of Polypropylene (PP), Polyamide (PA) or Polyamide with preventive fire protection (PA-V0) as standard.

In addition to Carbon Steel (phosphated, STAUFF material code W2 or Zinc/Nickel-plated, STAUFF material code W3), Stainless Steel V4A - 1.4401 / 1.4571 or AISI 316 / 316 Ti (STAUFF material code W5) is used as material for metal parts such as cover plates and welding plates. Alternative materials and surface finishings are available upon request.

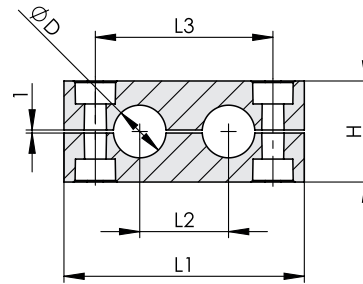
All threaded parts are available with Metric ISO thread or unified coarse (UNC) thread.

Features

- For the safe fastening of tubes, pipes, hoses, cables and other components
- Vibration- and noise reduction as an important contribution to preventive environmental protection, health and safety
- Orderly and clear installation of lines
- Quick and easy assembly
- Reduced assembly times due to fewer individual components
- Compact and thus space-saving and weight-reducing design
- Can be combined with selected metal parts of the Standard Series according to DIN 3015 (Part 1), including:
 - Hexagon Head Bolts Type AS
 - Stacking Bolts Type AF and Safety Locking Plates Type SIG
 - Hexagon Rail Nuts Type SM and Mounting Rails Type TS
 - Channel Rail Adaptors Type CRA
 - and more



Clamp Body Multi-Line Clamps
 Smooth Inside Surface with Tension Clearance
 Type MLC (for 2 lines)



Ordering Codes

Clamp Body (with identical diameters)

*MLC-*1-*02B-*06-*PP-*HV

One clamp body is consisting of two clamp halves.

- * Clamp Type **MLC**
- * STAUFF Group **1**
- * Number of lines and bolts **02B**
- * Exact outside diameter Ø D (mm) **06**
- * Material code (see below) **PP**
- * Inside Surface Type **HV**
 Smooth Inside Surface (Standard Option)
 Profiled Inside Surface (Upon Request) **without**

Clamp Body (with different diameters)

*MLC-*1-*02B-*06/12-*PP-*HV

Standard Materials



Polypropylene
 Colour: Black
 Material code: **PP**



Polyamide
 Colour: Black
 Material code: **PA**



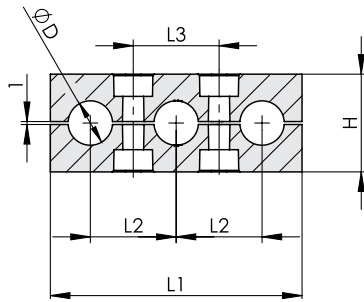
Fire-Proof Clamp Body Material made of Polyamide
 Colour: Black
 Material code: **PA-V0**

See pages 178 / 179 for material properties and technical information.

Alternative materials are available upon request. Please contact STAUFF for further information.

Group	Outside Diameter Pipe / Tube Ø D		Dimensions (mm / in)				Number of Bolts (B)	Ordering Code Standard Option (2 Clamp Halves) (** = Material)
	(mm)	(in)	L1	L2	L3	H		
1	6						2	MLC-1-02B-06-**-HV
	6,4	1/4						MLC-1-02B-06.4-**-HV
	8	5/16	60,5	20	40	27		MLC-1-02B-08-**-HV
	9,5	3/8	2.38	.79	1.57	1.06		MLC-1-02B-09.5-**-HV
	10							MLC-1-02B-10-**-HV
	12							MLC-1-02B-12-**-HV
2	10						2	MLC-2-02B-10-**-HV
	12	1/2						MLC-2-02B-12-**-HV
	12,7							MLC-2-02B-12.7-**-HV
	13,5		78,5	29	58	33		MLC-2-02B-13.5-**-HV
	14		3.09	1.14	2.28	1.30		MLC-2-02B-14-**-HV
	15							MLC-2-02B-15-**-HV
	16	5/8						MLC-2-02B-16-**-HV
	17,2							MLC-2-02B-17.2-**-HV
	18							MLC-2-02B-18-**-HV
	15							MLC-3-02B-15-**-HV
3	16						2	MLC-3-02B-16-**-HV
	17,2							MLC-3-02B-17.2-**-HV
	18							MLC-3-02B-18-**-HV
	19	3/4	92,5	36	72	37		MLC-3-02B-19-**-HV
	20		3.64	1.42	2.83	1.46		MLC-3-02B-20-**-HV
	21,3							MLC-3-02B-21.3-**-HV
	22	7/8						MLC-3-02B-22-**-HV
	23							MLC-3-02B-23-**-HV
	25							MLC-3-02B-25-**-HV
	25,4	1						MLC-3-02B-25.4-**-HV

Additional outside diameters and various diameter combinations are available upon request. Please contact STAUFF for further information.

Clamp Body Multi-Line Clamps
 Smooth Inside Surface with Tension Clearance
 Type MLC (for 3 lines)


Group	Outside Diameter Pipe / Tube		Dimensions (mm/in)				Number of Bolts (B)	Ordering Code Standard Option (2 Clamp Halves) (** = Material)
	Ø D (mm)	(in)	L1	L2	L3	H		
1	6						2	MLC-1-03B-06-**-HV
	6,4	1/4						MLC-1-03B-06.4-**-HV
	8	5/16	56	20	20	27		MLC-1-03B-08-**-HV
	9,5	3/8	2.20	.79	.79	1.06		MLC-1-03B-09.5-**-HV
	10							MLC-1-03B-10-**-HV
	12							MLC-1-03B-12-**-HV
2	10						2	MLC-2-03B-10-**-HV
	12	1/2						MLC-2-03B-12-**-HV
	12,7							MLC-2-03B-12.7-**-HV
	13,5		85	29	29	33		MLC-2-03B-13.5-**-HV
	14		3.35	1.14	1.14	1.30		MLC-2-03B-14-**-HV
	15							MLC-2-03B-15-**-HV
	16	5/8						MLC-2-03B-16-**-HV
	17,2							MLC-2-03B-17.2-**-HV
	18							MLC-2-03B-18-**-HV
	15							MLC-3-03B-15-**-HV
3	16						2	MLC-3-03B-16-**-HV
	17,2							MLC-3-03B-17.2-**-HV
	18							MLC-3-03B-18-**-HV
	19	3/4	106	36	36	37		MLC-3-03B-19-**-HV
	20		4.17	1.42	1.42	1.46		MLC-3-03B-20-**-HV
	21,3							MLC-3-03B-21.3-**-HV
	22	7/8						MLC-3-03B-22-**-HV
	23							MLC-3-03B-23-**-HV
	25							MLC-3-03B-25-**-HV
	25,4	1						MLC-3-03B-25.4-**-HV

Additional outside diameters and various diameter combinations are available upon request. Please contact STAUFF for further information.

Ordering Codes
Clamp Body (with identical diameters)

*MLC-*1-*03B-*06-*PP-*HV

One clamp body is consisting of two clamp halves.

- * Clamp Type MLC
- * STAUFF Group 1
- * Number of lines and bolts 03B
- * Exact outside diameter Ø D (mm) 06
- * Material code (see below) PP
- * Inside Surface Type
 - Smooth Inside Surface (Standard Option) HV
 - Profiled Inside Surface (Upon Request) without

Clamp Body (with different diameters)

*MLC-*1-*03B-*06/12/08-*PP-*HV

Standard Materials

Polypropylene
 Colour: Black
 Material code: **PP**

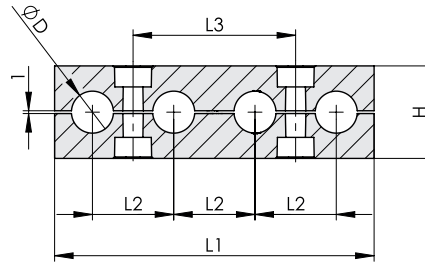
Polyamide
 Colour: Black
 Material code: **PA**

Fire-Proof Clamp Body Material made of Polyamide
 Colour: Black
 Material code: **PA-VO**

See pages 178 / 179 for material properties and technical information.

Alternative materials are available upon request. Please contact STAUFF for further information.

Clamp Body Multi-Line Clamps
 Smooth Inside Surface with Tension Clearance
 Type MLC (for 4 lines)



Ordering Codes

Clamp Body (with identical diameters)

*MLC-*1-*04B-*06-*PP-*HV

One clamp body is consisting of two clamp halves.

- * Clamp Type **MLC**
- * STAUFF Group **1**
- * Number of lines and bolts **04B**
- * Exact outside diameter Ø D (mm) **06**
- * Material code (see below) **PP**
- * Inside Surface Type **HV**
- Smooth Inside Surface (Standard Option)
- Profiled Inside Surface (Upon Request) **without**

Clamp Body (with different diameters)

*MLC-*1-*04B-*06/12/08/10-*PP-*HV

Standard Materials

Polypropylene
 Colour: Black
 Material code: **PP**

Polyamide
 Colour: Black
 Material code: **PA**

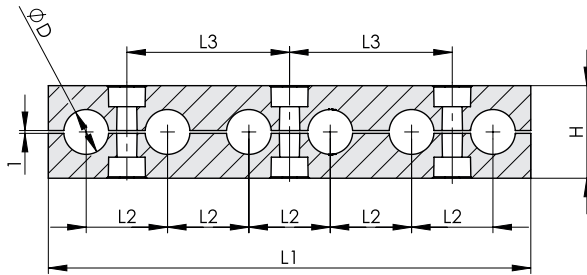
Fire-Proof Clamp Body Material made of Polyamide
 Colour: Black
 Material code: **PA-V0**

See pages 178 / 179 for material properties and technical information.

Alternative materials are available upon request. Please contact STAUFF for further information.

Group	Outside Diameter Pipe / Tube Ø D		Dimensions (mm / in)				Number of Bolts (B)	Ordering Code Standard Option (2 Clamp Halves) (** = Material)
	(mm)	(in)	L1	L2	L3	H		
1	6						2	MLC-1-04B-06-**-HV
	6,4	1/4						MLC-1-04B-06.4-**-HV
	8	5/16	76	20	40	27		MLC-1-04B-08-**-HV
	9,5	3/8	2.99	.79	1.57	1.06		MLC-1-04B-09.5-**-HV
	10							MLC-1-04B-10-**-HV
	12							MLC-1-04B-12-**-HV
2	10						2	MLC-2-04B-10-**-HV
	12	1/2						MLC-2-04B-12-**-HV
	12,7							MLC-2-04B-12.7-**-HV
	13,5		114	29	58	33		MLC-2-04B-13.5-**-HV
	14		4.49	1.14	2.28	1.30		MLC-2-04B-14-**-HV
	15							MLC-2-04B-15-**-HV
	16	5/8						MLC-2-04B-16-**-HV
	17,2							MLC-2-04B-17.2-**-HV
	18							MLC-2-04B-18-**-HV
	18							MLC-2-04B-18-**-HV
3	15						2	MLC-3-04B-15-**-HV
	16							MLC-3-04B-16-**-HV
	17,2							MLC-3-04B-17.2-**-HV
	18							MLC-3-04B-18-**-HV
	19	3/4						MLC-3-04B-19-**-HV
	20		142	36	72	37		MLC-3-04B-20-**-HV
	21,3		5.59	1.42	2.83	1.46		MLC-3-04B-21.3-**-HV
	22	7/8						MLC-3-04B-22-**-HV
	23							MLC-3-04B-23-**-HV
	25							MLC-3-04B-25-**-HV
25,4	1					MLC-3-04B-25.4-**-HV		

Additional outside diameters and various diameter combinations are available upon request. Please contact STAUFF for further information.

Clamp Body Multi-Line Clamps
 Smooth Inside Surface with Tension Clearance
 Type MLC (for 6 lines)


Group	Outside Diameter		Dimensions				Number of Bolts (C)	Ordering Code Standard Option (2 Clamp Halves) (** = Material)
	Pipe / Tube	$\varnothing D$	(mm)	(in)	L1	L2		
1	6							MLC-1-06C-06-**-HV
	6,4	1/4						MLC-1-06C-06.4-**-HV
	8	5/16	116	20	40	27		MLC-1-06C-08-**-HV
	9,5	3/8	4.57	.79	1.57	1.06		MLC-1-06C-09.5-**-HV
	10							MLC-1-06C-10-**-HV
	12							MLC-1-06C-12-**-HV
2	10							MLC-2-06C-10-**-HV
	12	1/2						MLC-2-06C-12-**-HV
	12,7							MLC-2-06C-12.7-**-HV
	13,5							MLC-2-06C-13.5-**-HV
	14		172	29	58	33		MLC-2-06C-14-**-HV
	15		6.77	1.14	2.28	1.30		MLC-2-06C-15-**-HV
	16	5/8						MLC-2-06C-16-**-HV
	17,2							MLC-2-06C-17.2-**-HV
	18							MLC-2-06C-18-**-HV
	15							MLC-3-06C-15-**-HV
3	16							MLC-3-06C-16-**-HV
	17,2							MLC-3-06C-17.2-**-HV
	18							MLC-3-06C-18-**-HV
	19	3/4						MLC-3-06C-19-**-HV
	20		214	36	72	37		MLC-3-06C-20-**-HV
	21,3		8.43	1.42	2.83	1.46		MLC-3-06C-21.3-**-HV
	22	7/8						MLC-3-06C-22-**-HV
	23							MLC-3-06C-23-**-HV
	25							MLC-3-06C-25-**-HV
	25,4	1						MLC-3-06C-25.4-**-HV

Additional outside diameters and various diameter combinations are available upon request. Please contact STAUFF for further information.

Ordering Codes
Clamp Body (with identical diameters)

*MLC-*1-*06C-*06-*PP-*HV

One clamp body is consisting of two clamp halves.

- * Clamp Type MLC
- * STAUFF Group 1
- * Number of lines and bolts 06C
- * Exact outside diameter $\varnothing D$ (mm) 06
- * Material code (see below) PP
- * Inside Surface Type
 - Smooth Inside Surface (Standard Option) HV
 - Profiled Inside Surface (Upon Request) without

Clamp Body (with different diameters)

*MLC-*1-*06C-*06/12/08/10/12/12-*PP-*HV

Standard Materials

Polypropylene
 Colour: Black
 Material code: **PP**

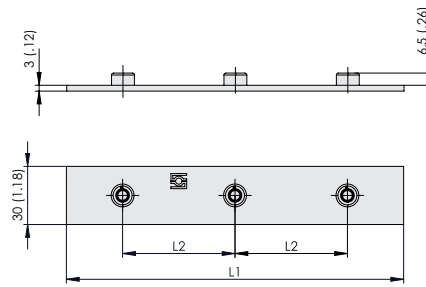
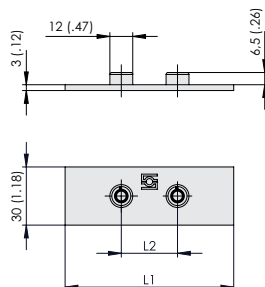
Polyamide
 Colour: Black
 Material code: **PA**

Fire-Proof Clamp Body Material made of Polyamide
 Colour: Black
 Material code: **PA-VO**

See pages 178 / 179 for material properties and technical information.

Alternative materials are available upon request. Please contact STAUFF for further information.

Single Weld Plate for Multi-Line Clamps
Type SP-MLC



2 Welding Nuts (B)

3 Welding Nuts (C)

Ordering Codes

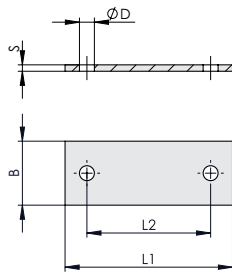
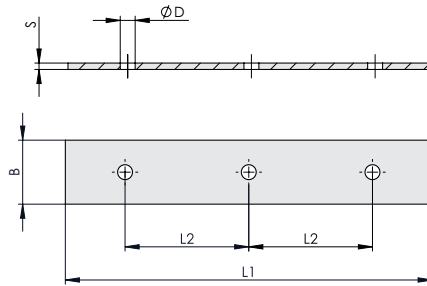
Single Weld Plate

*SP-MLC-*1-*04B-*M-*78-*W2

- * Single Weld Plate for Multi-Line Clamps **SP-MLC**
- * STAUFF Group **1**
- * Number of lines and bolts in Clamp Body **04B**
- * Thread code Metric ISO thread **M**
- Unified coarse (UNC) thread **U**
- * Length **78**
- * Material code Carbon Steel, phosphated **W2**
- Stainless Steel V4A **W5**
- 1.4401 / 1.4571 (AISI 316 / 316 Ti)

Group STAUFF	Number of Lines in Clamp Body	Number of Welding Nuts	Dimensions (mm/in)			Ordering Codes (Standard Options)
			Thread G	L1	L2	
1	2	2	M6	62,5	40	SP-MLC-1-02B-M-62.5-W2
			1/4-20 UNC	2.46	1.57	SP-MLC-1-02B-U-62.5-W2
	3		M6	58	20	SP-MLC-1-03B-M-58-W2
			1/4-20 UNC	2.28	.79	SP-MLC-1-03B-U-58-W2
	4		M6	78	40	SP-MLC-1-04B-M-78-W2
			1/4-20 UNC	3.07	1.57	SP-MLC-1-04B-U-78-W2
2	2	3	M6	118	40	SP-MLC-1-06C-M-118-W2
			1/4-20 UNC	4.46	1.57	SP-MLC-1-06C-U-118-W2
	3		M6	80	58	SP-MLC-2-02B-M-80-W2
			1/4-20 UNC	3.15	2.28	SP-MLC-2-02B-U-80-W2
	4		M6	87	29	SP-MLC-2-03B-M-87-W2
			1/4-20 UNC	3.43	1.14	SP-MLC-2-03B-U-87-W2
3	2	M6	116	58	SP-MLC-2-04B-M-116-W2	
		1/4-20 UNC	4.57	2.28	SP-MLC-2-04B-U-116-W2	
	3	M6	174	58	SP-MLC-2-06C-M-174-W2	
		1/4-20 UNC	6.85	2.28	SP-MLC-2-06C-U-174-W2	
3	2	2	M6	94,5	72	SP-MLC-3-02B-M-94.5-W2
			1/4-20 UNC	3.72	2.83	SP-MLC-3-02B-U-94.5-W2
	3		M6	108	36	SP-MLC-3-03B-M-108-W2
			1/4-20 UNC	4.25	1.41	SP-MLC-3-03B-U-108-W2
	4		M6	144	72	SP-MLC-3-04B-M-144-W2
			1/4-20 UNC	5.67	2.83	SP-MLC-3-04B-U-144-W2
6	3	M6	216	72	SP-MLC-3-06C-M-216-W2	
		1/4-20 UNC	8.50	2.83	SP-MLC-3-06C-U-216-W2	

All threaded parts are available with Metric ISO thread or unified coarse (UNC) thread according to dimension table. Alternative materials and surface finishings are available upon request. Contact STAUFF for further information.

**Cover Plate for Multi-Line Clamps
Type DP-MLC**

2 Bolts (B)

3 Bolts (C)


Group STAUFF	Number of Lines in Clamp Body	Number of Bolts	Dimensions (mm/in)					Ordering Codes (Standard Options)							
			L1	L2	B	D	S								
1	2	2	60,5	40	30	7	3	DP-MLC-1-02B-60.5-W3							
			2.38	1.57				DP-MLC-1-03B-56-W3							
	3		56	20				DP-MLC-1-04B-76-W3							
			2.20	.79				DP-MLC-1-06C-116-W3							
	4	76	40	DP-MLC-2-02B-78.5-W3											
	2.99	1.57	DP-MLC-2-03B-85-W3												
2	6	3	116	40				1.18	.28	.12	DP-MLC-2-04B-114-W3				
		4.57	1.57	DP-MLC-2-06C-172-W3											
	2	2	78,5	58							92,5	72	3.64	DP-MLC-3-02B-92.5-W3	
			3.09	2.28										DP-MLC-3-03B-106-W3	
	3		85	29										142	72
	3.35		1.14	DP-MLC-3-06C-214-W3											
4	114	58	214	72	8.43	2.83									
	4.49	2.28													
6	172	58													
	6.77	2.28													
3	2	2	92,5	72	214	72	8.43	2.83							
			3.64	2.83											
	3		106	36											
			4.17	1.42											
	4	142	72												
	5.59	2.83													
	6	3	214	72											
	8.43	2.83													

Ordering Codes
Cover Plate
***DP-MLC-*1-*04B-*76-*W3**

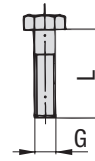
* Cover Plate for Multi-Line Clamps	DP-MLC
* STAUFF Group	1
* Number of lines and bolts in Clamp Body	04B
* Length	76
* Material code	W3
Carbon Steel, zinc/nickel-plated	
Stainless Steel V4A	W5
1.4401 / 1.4571 (AISI 316 / 316 Ti)	

Alternative materials and surface finishings are available upon request. Contact STAUFF for further information.

Hexagon Head Bolt

(for Use with Cover Plate DP-MLC)

Type AS



Hexagon Head Bolt AS (according to DIN 931 / 933 or ANSI / ASME B18.2.1.)
Dimensions applicable only when used with Cover Plate DP-MLC

Ordering Codes

Hexagon Head Bolt

***AS-*M6x30-*W3**

- * Hexagon Head Bolt (according to DIN 931 / 933 or ANSI / ASME B18.2.1.) **AS**
- * Thread type and size acc. to dimension table **M6x30**
- * Material code Carbon Steel, zinc/nickel-plated **W3**
Stainless Steel V4A **W5**
1.4401 / 1.4571 (AISI 316 / 316 Ti)

Group STAUFF	Dimensions (mm/in) Thread G x L	Ordering Codes (Standard Options)
1	M6 x 30	AS-M6x30-W3
	1/4-20 UNC x 1-1/4	AS-1/4-20UNCx1-1/4-W3
2	M6 x 35	AS-M6x35-W3
	1/4-20 UNC x 1-3/8	AS-1/4-20UNCx1-3/8-W3
3	M6 x 40	AS-M6x40-W3
	1/4-20 UNC x 1-1/2	AS-1/4-20UNCx1-1/2-W3

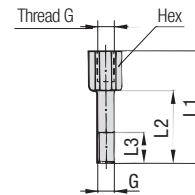
All threaded parts are available with Metric ISO thread or unified coarse (UNC) thread according to dimension table. Alternative materials and surface finishings are available upon request. Contact STAUFF for further information.

G

Stacking Bolt

(for Use with Safety Locking Plate SIG)

Type AF



Ordering Codes

Stacking Bolt

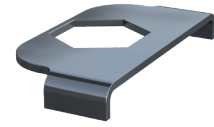
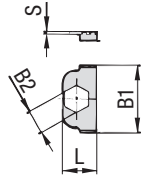
***AF-*1/1A/1D-*M-*W3**

- * Stacking Bolt (according to STAUFF Standard-Series) **AF**
- * STAUFF Group **1**
- * Thread code Metric ISO thread **M**
Unified coarse (UNC) thread **U**
- * Material code Carbon Steel, zinc/nickel-plated **W3**
Stainless Steel V4A **W5**
1.4401 / 1.4571 (AISI 316 / 316 Ti)

Group STAUFF	Dimensions (mm/in)					Ordering Codes (Standard Options)
	Thread G	L1	L2	L3 min.	Hex	
1	M6	34	20	12	11	AF-1/1A/1D-M-W3
	1/4-20 UNC	1.34	.79	.47	.43	AF-1/1A/1D-U-W3
2	M6	40	25	12	11	AF-2-M-W3
	1/4-20 UNC	1.57	.98	.47	.43	AF-2-U-W3
3	M6	44	30	12	11	AF-3-M-W3
	1/4-20 UNC	1.73	1.18	.47	.43	AF-3-U-W3

All threaded parts are available with Metric ISO thread or unified coarse (UNC) thread according to dimension table. Alternative materials and surface finishings are available upon request. Contact STAUFF for further information.

Safety Locking Plate
 (for Use with Stacking Bolt AF)
Type SIG


STAUFF Group 1

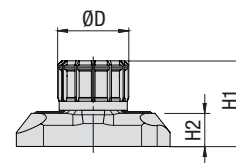
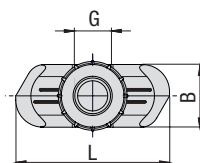
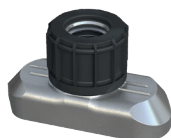
Group STAUFF	Dimensions (mm/in)				Ordering Code (Standard Option)
	L	B1	B2	S	
1					SIG-1-W3
2	16 .63	32 1.26	11,2 .44	1 .04	
3					

Alternative materials and surface finishings are available upon request. Contact STAUFF for further information.

Ordering Codes
Safety Locking Plate
***SIG-*1-*W3**

* Safety Locking Plate (according to STAUFF Standard-Series)	SIG
* STAUFF Group	1
* Material code Carbon Steel, zinc/nickel-plated	W3
Stainless Steel V4A	W5
1.4401 / 1.4571 (AISI 316 / 316 Ti)	

Hexagon Rail Nut
(for Use with Mounting Rail TS)
Type SM



Ordering Codes

Hexagon Rail Nut

***SM-1-8/1D-M-W3**

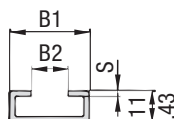
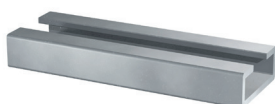
- * Hexagon Rail Nut (according to STAUFF Standard-Series) **SM**
- * STAUFF Group 1 to 8 **1-8/1D**
- * Thread code Metric ISO thread **M**
Unified coarse (UNC) thread **U**
- * Material code Carbon Steel, zinc/nickel-plated **W3**
Stainless Steel V4A **W5**
1.4401 / 1.4571 (AISI 316 / 316 Ti)

Group STAUFF	Dimensions (mm/in)						Ordering Codes (Standard Options)
	Thread G	L	B	H1	H2	ØD	
1							
2	M6	25,5	10,4	14,2	5,5	12	SM-1-8/1D-M-W3
	1/4-20 UNC	1.00	.41	.56	.22	.47	SM-1-8/1D-U-W3
3							

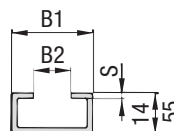
All threaded parts are available with Metric ISO thread or unified coarse (UNC) thread according to dimension table. Alternative materials and surface finishings are available upon request. Contact STAUFF for further information.

G

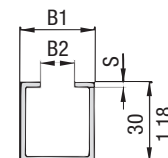
Mounting Rail
(for Use with Hexagon Rail Nut SM)
Type TS



Mounting Rail TS-11



Mounting Rail TS-14



Mounting Rail TS-30

Ordering Codes

Mounting Rail

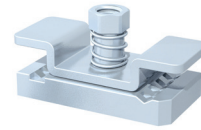
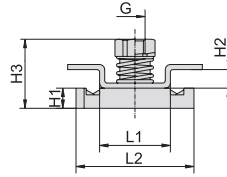
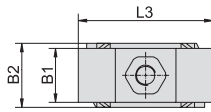
***TS-11-1M-W98**

- * Mounting Rail (according to STAUFF Standard-Series) **TS**
- * Height of rail 11 mm / .43 in **11**
14 mm / .55 in **14**
30 mm / 1.18 in **30**
- * Length of rail 1 m / 3.28 ft **1M**
2 m / 6.56 ft **2M**
Alternative lengths available upon request. Contact STAUFF for further information.
- * Werkstoff Carbon Steel, hot-dip galvanised **W98**
Stainless Steel V4A **W5**
1.4401 / 1.4571 (AISI 316 / 316 Ti)

Group STAUFF	Dimensions (mm/in)			Ordering Codes (Standard Options)	
	B1	B2	S	Length of rail: 1 m / 3.28 ft	Length of rail: 2 m / 6.56 ft
1				Height 11 mm / .43 in TS-11-1M-W98	Height 11 mm / .43 in TS-11-2M-W98
2	28	11	2	Height 14 mm / .55 in TS-14-1M-W98	Height 14 mm / .55 in TS-14-2M-W98
	1.10	.43	.08		
3				Height 30 mm / 1.18 in TS-30-1M-W98	Height 30 mm / 1.18 in TS-30-2M-W98

Alternative materials and surface finishings are available upon request. Contact STAUFF for further information.

Channel Rail Adaptor (for Use with Various Channel Rails) Type CRA



Group STAUFF	DIN	Dimensions (mm/in)									Ordering Codes (Standard Options)	
		Thread G	L1	L2	L3	B1	B2	H1	H2	H3		
1	0											
2	2	M6	21	35	40	16	19	6	5,5	20,5	CRA-1-8/1D-M-W3 CRA-1-8/1D-U-W3	
		1/4-20 UNC	.83	1.38	1.57	.63	.75	.24	.22	.81		
3	3											

All threaded parts are available with Metric ISO thread or unified coarse (UNC) thread according to dimension table. Alternative materials and surface finishings are available upon request. Contact STAUFF for further information.

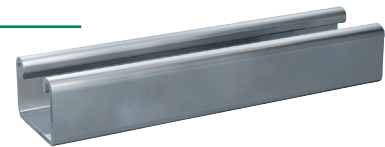
Ordering Codes

Adaptor *CRA-*1-8/1D-*M-*W3

* Channel Rail Adaptor	CRA
* STAUFF Group	1 to 8 1-8/1D
* Thread code	Metric ISO thread M Unified coarse (UNC) thread U
* Material code	Carbon Steel, zinc/nickel-plated W3 Stainless Steel V4A W5 1.4401 / 1.4571 (AISI 316 / 316 Ti)

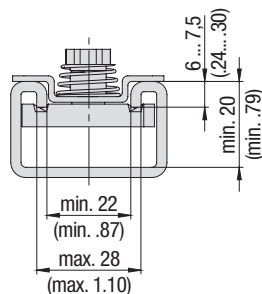
Compatibility with Channel Rails

The STAUFF Channel Rail Adaptor, type CRA, is suitable for various channel rails, including the following types:



HALFEN	HILTI	UNISTRUT®	STAUFF (Cushion Clamp Series)
HM 41/41	MQ-21, MQ-41, MQ-52, MQ-72	P1000, P1000T, P1000V, P1000VT, P1001	SCS-048-1-PL, SCS-048-1-GR
HZA 41/22	MQ-21U, MQ-41U, MQ-72U	P2000, P2000T	SCS-120-1-PL, SCS-120-1-GR
HZM 41/41	MQ-21D, MQ-41D, MQ-52-72D	P3003, P3003T, P3300V, P3300VT, P3301	See page 149 for technical information.
HZM 41/22		P4000, P4000T	
HL 41/41, HL 41/B2		P5000, P5000T, P5001, P5500, P5500T, P5501	

To check the compatibility with additional types of channel rail, please compare the dimensions with the following drawing before use.



**Basic dimensional requirements for channel rails
to be used with STAUFF Channel Rail Adaptors, type CRA**

Examples of Assembly

Direct Assembly



- 2x **Hexagon Head Bolt**
Material code: W3 / W5
Thread: Metric / UNC
- 1x **Cover Plate**
Material code: W3 / W5
- 1x **Clamp Body** (2 Clamp Halves)
STAUFF Group 1 / 2 / 3
Material code: PP / PA / PA-V0
Smooth Inside Surface
with Tension Clearance

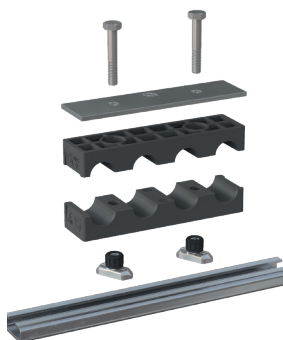
Single Weld Plate Assembly



- 2x **Hexagon Head Bolt**
Material code: W3 / W5
Thread: Metric / UNC
- 1x **Cover Plate**
Material code: W3 / W5
- 1x **Clamp Body** (2 Clamp Halves)
STAUFF Group 1 / 2 / 3
Material code: PP / PA / PA-V0
Smooth Inside Surface
with Tension Clearance
- 1x **Single Weld Plate**
Material code: W2 / W5
Thread: Metric / UNC

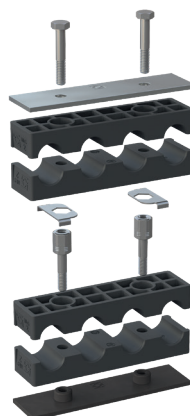
G

Mounting Rail Assembly



- 2x **Hexagon Head Bolt**
Material code: W3 / W5
Thread: Metric / UNC
- 1x **Cover Plate**
Material code: W3 / W5
- 1x **Clamp Body** (2 Clamp Halves)
STAUFF Group 1 / 2 / 3
Material code: PP / PA / PA-V0
Smooth Inside Surface
with Tension Clearance
- 2x **Hexagon Rail Nut**
Material code: W3 / W5
Thread: Metric / UNC
- Mounting Rail**
Material code: W98 / W5
Height: 11 mm (.43 in) /
14 mm (.55 in) /
30 mm (1.18 in)
Length: 1 m (3.28 ft) /
2 m (6.56 ft)

Stacking Assembly



- 2x **Hexagon Head Bolt**
Material code: W3 / W5
Thread: Metric / UNC
- 1x **Cover Plate**
Material code: W3 / W5
- 2x **Clamp Body** (4 Clamp Halves)
STAUFF Group 1 / 2 / 3
Material code: PP / PA / PA-V0
Smooth Inside Surface
with Tension Clearance
- 2x **Safety Locking Plate**
Material code: W3 / W5
- 2x **Stacking Bolt**
Material code: W3 / W5
Thread: Metric / UNC
- 1x **Single Weld Plate**
Material code: W2 / W5
Thread: Metric / UNC