



# STAUFF Connect











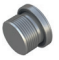


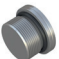



Metric tube connectors, assembly tools  
and accessories

---

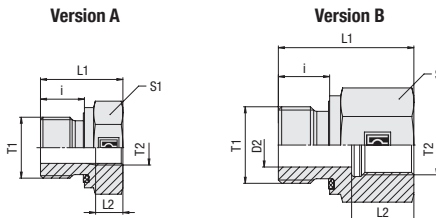
Product Catalogue

Version  
10/2025



	<b>Thread Reducer</b> FI-RED	224-226		<b>Profile Sealing Ring</b> WDG	238
	<b>Whitworth Parallel Pipe Thread (BSPP) / Profile Sealing Ring</b> FI-RED-...-R-WD	224		<b>O-Ring</b> O-RING	239
	<b>Whitworth Parallel Pipe Thread (BSPP) / Metallic Sealing Edge</b> FI-RED-...-R	226		<b>External Metallic Sealing Ring</b> FI-DKR	244
	<b>Blanking Screw for Ports (Heavy Duty)</b> FI-VSV	228-229		<b>Retaining Ring with Captive Seal</b> FI-DIR	245
	<b>Whitworth Parallel Pipe Thread (BSPP) / Profile Sealing Ring</b> FI-VSV-...-R-WD	228		<b>Internal Metallic Sealing Ring</b> FI-DKI	246
	<b>Metric Parallel Thread / Profile Sealing Ring</b> FI-VSV-...-M-WD	229		<b>Retaining Ring (Small)</b> FI-KR	247
	<b>Blanking Screw for Ports</b> FI-VS	230-233			
	<b>Whitworth Parallel Pipe Thread (BSPP) / Profile Sealing Ring</b> FI-VS-...-R-WD	230			
	<b>Metric Parallel Thread / Profile Sealing Ring</b> FI-VS-...-M-WD	231			
	<b>Whitworth Parallel Pipe Thread (BSPP) / Metallic Sealing Edge</b> FI-VS-...-R	232			
	<b>Metric Parallel Thread / O-Ring</b> FI-VS-...-M-OR	233			
	<b>Blanking Plug with 24° Taper / O-Ring (DK0)</b> FI-VD	234			
	<b>Blanking Plug with Sealing Edge</b> FI-BUZ	235			
	<b>Blanking Plug for Tube Ends</b> FI-VSK	236			
	<b>Hexagon Lock Nut</b> FI-SKM	237			

### Thread Reducer Type FI-RED-...-R-WD



Male / Female Whitworth Parallel Pipe Thread (BSPP)

Profile Sealing Ring

#### Ordering Codes

**\*FI-RED\*-R\*1/2\*-WD\*-R\*3/8\*-B\*-W3**

- \* Thread Reducer **FI-RED**
- \* Thread Type T1 Whitworth Parallel Pipe Thread (BSPP) **R**
- \* Thread Size T1 acc. to dimension table **1/2**
- Please always indicate thread sizes, e.g. 1/2!
- \* Seal Type Profile Sealing Ring **-WD**
- \* Thread Type T2 Whitworth Parallel Pipe Thread (BSPP) **R**
- \* Thread Size T2 acc. to dimension table **3/8**
- Please always indicate thread sizes, e.g. 3/8!
- \* Seal Material NBR (Buna-N®) **-B**  
FKM (Viton®) **-V**
- \* Material Code Steel, zinc/nickel-plated **-W3**

Please contact STAUFF for alternative materials and surface finishings.

PN bar	Dimensions mm								Version	Torque N-m	Weight kg ca. per 100	Ordering Codes
	Thread T1	Thread T2	D2	i	L1	L2	S1	Thread T				
630	G 1/8	G 1/4	4	8	31	17	19	B	25	4,30	FI-RED-R1/8-WD-R1/4-B-W3	
630	G 1/8	G 3/8	4	8	32	17	24	B	25	6,70	FI-RED-R1/8-WD-R3/8-B-W3	
630	G 1/4	G 1/8	5	12	29	12	19	B	55	4,40	FI-RED-R1/4-WD-R1/8-B-W3	
630	G 1/4	G 1/4	8	12	35,5	17	22	B	55	4,26	FI-RED-R1/4-WD-R1/4-B-W3	
630	G 1/4	G 3/8	5	12	36	17	24	B	55	7,30	FI-RED-R1/4-WD-R3/8-B-W3	
630	G 1/4	G 1/2	5	12	40	20	30	B	55	12,80	FI-RED-R1/4-WD-R1/2-B-W3	
630	G 1/4	G 3/4	5	12	43	22	36	B	55	18,80	FI-RED-R1/4-WD-R3/4-B-W3	
630	G 3/8	G 1/8	12	22,5	8,5	22	A	80	4,20	FI-RED-R3/8-WD-R1/8-B-W3		
630	G 3/8	G 1/4	8	12	36	17	22	B	80	7,40	FI-RED-R3/8-WD-R1/4-B-W3	
630	G 3/8	G 1/2	8	12	41	20	30	B	80	13,60	FI-RED-R3/8-WD-R1/2-B-W3	
400	G 3/8	G 3/4	8	12	44	22	36	B	80	19,70	FI-RED-R3/8-WD-R3/4-B-W3	
630	G 1/2	G 1/8	14	24	8	27	A	115	7,00	FI-RED-R1/2-WD-R1/8-B-W3		
630	G 1/2	G 1/4	14	24	12	27	A	115	6,20	FI-RED-R1/2-WD-R1/4-B-W3		
630	G 1/2	G 3/8	12	14	37	17	27	B	115	10,40	FI-RED-R1/2-WD-R3/8-B-W3	
630	G 1/2	G 1/2	12	14	43	20	30	B	115	13,11	FI-RED-R1/2-WD-R1/2-B-W3	
400	G 1/2	G 3/4	12	14	46	22	36	B	115	20,10	FI-RED-R1/2-WD-R3/4-B-W3	
400	G 1/2	G 1	12	14	49	24,5	41	B	115	25,10	FI-RED-R1/2-WD-R1-B-W3	
250	G 1/2	G 1 1/4	10	14	53	26,5	55	B	115	52,10	FI-RED-R1/2-WD-R1-1/4-B-W3	

Standard seal material is NBR (Buna-N®).

Male threaded studs were designed for female threaded ports in components made of steel. For applications with components made of softer mating materials (e.g. Aluminium), the use of connectors with additionally rolled male threads is recommended.

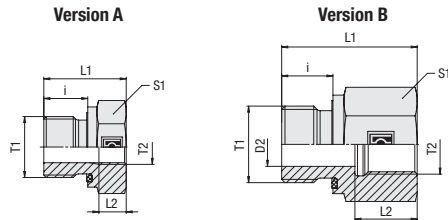
Please contact STAUFF prior to the assembly for further information.

#### Spare Parts / Accessories



Profile Sealing Ring  
Type **WDG**

Page 238



## Thread Reducer Type FI-RED-...-R-WD



### Profile Sealing Ring

### Male / Female Whitworth Parallel Pipe Thread (BSPP)

PN bar	Dimensions mm							Version	Torque N-m	Weight kg ca. per 100	Ordering Codes
	Thread T1	Thread T2	D2	i	L1	L2	S1				
400	G 3/4	G 1/4	16	16	26	12,5	32	A	180	10,90	FI-RED-R3/4-WD-R1/4-B-W3
400	G 3/4	G 3/8	16	16	26	12,5	32	A	180	9,40	FI-RED-R3/4-WD-R3/8-B-W3
400	G 3/4	G 1/2	16	16	43	20	32	B	180	16,90	FI-RED-R3/4-WD-R1/2-B-W3
400	G 3/4	G 3/4	16	16	48	22	41	B	180	18,96	FI-RED-R3/4-WD-R3/4-B-W3
400	G 3/4	G 1	16	16	51	24,5	41	B	180	26,60	FI-RED-R3/4-WD-R1-B-W3
250	G 3/4	G 1 1/4	16	16	55	26,5	55	B	180	52,70	FI-RED-R3/4-WD-R1-1/4-B-W3
250	G 3/4	G 1 1/2	16	16	57	28,5	60	B	180	61,10	FI-RED-R3/4-WD-R1-1/2-B-W3
400	G 1	G 1/4	18	18	29	12,5	41	A	310	20,70	FI-RED-R1-WD-R1/4-B-W3
400	G 1	G 3/8	18	18	29	12,5	41	A	310	19,10	FI-RED-R1-WD-R3/8-B-W3
400	G 1	G 1/2	18	18	29	14,5	41	A	310	16,80	FI-RED-R1-WD-R1/2-B-W3
400	G 1	G 3/4	20	18	49	22	41	B	310	31,30	FI-RED-R1-WD-R3/4-B-W3
400	G 1	G 1	20	18	52	24,5	41	B	310	26,21	FI-RED-R1-WD-R1-B-W3
250	G 1	G 1 1/4	20	18	57	26,5	55	B	310	58,80	FI-RED-R1-WD-R1-1/4-B-W3
250	G 1	G 1 1/2	20	18	59	28,5	60	B	310	63,90	FI-RED-R1-WD-R1-1/2-B-W3
400	G 1 1/4	G 1/2	20	20	32	14,5	50	A	450	33,00	FI-RED-R1-1/4-WD-R1/2-B-W3
400	G 1 1/4	G 3/4	20	20	32	16,5	50	A	450	28,30	FI-RED-R1-1/4-WD-R3/4-B-W3
400	G 1 1/4	G 1	25	20	53	24,5	50	B	450	50,60	FI-RED-R1-1/4-WD-R1-B-W3
250	G 1 1/4	G 1 1/2	25	20	60	28,5	60	B	450	67,30	FI-RED-R1-1/4-WD-R1-1/2-B-W3
400	G 1 1/2	G 1/2	22	22	36	14,5	55	A	540	49,60	FI-RED-R1-1/2-WD-R1/2-B-W3
400	G 1 1/2	G 3/4	22	22	36	16	55	A	540	44,40	FI-RED-R1-1/2-WD-R3/4-B-W3
400	G 1 1/2	G 1	22	22	36	18,5	55	A	540	36,90	FI-RED-R1-1/2-WD-R1-B-W3
250	G 1 1/2	G 1 1/4	22	22	58	26,5	55	B	540	57,80	FI-RED-R1-1/2-WD-R1-1/4-B-W3
160	G 2	G 1	24	24	46	19,5	75	A	700	99,8	FI-RED-R2-WD-R1-B-W3
160	G 2	G 1 1/4	24	24	48	20,5	75	A	700	93,70	FI-RED-R2-WD-R1-1/4-B-W3
160	G 2	G 1 1/2	40	24	65	29	75	B	700	132,20	FI-RED-R2-WD-R1-1/2-B-W3

Standard seal material is NBR (Buna-N®).

Male threaded studs were designed for female threaded ports in components made of steel. For applications with components made of softer mating materials (e.g. Aluminium), the use of connectors with additionally rolled male threads is recommended.

Please contact STAUFF prior to the assembly for further information.

### Ordering Codes

**\*FI-RED\*-R\*1/2\*-WD\*-R\*3/8\*-B\*-W3**

* Thread Reducer		<b>FI-RED</b>
* Thread Type T1	Whitworth Parallel Pipe Thread (BSPP)	<b>R</b>
* Thread Size T1	acc. to dimension table	<b>1/2</b>
Please always indicate thread sizes, e.g. 1/2!		
* Seal Type	Profile Sealing Ring	<b>-WD</b>
* Thread Type T2	Whitworth Parallel Pipe Thread (BSPP)	<b>R</b>
* Thread Size T2	acc. to dimension table	<b>3/8</b>
Please always indicate thread sizes, e.g. 3/8!		
* Seal Material	NBR (Buna-N®) FKM (Viton®)	<b>-B</b> <b>-V</b>
* Material Code	Steel, zinc/nickel-plated	<b>-W3</b>

Please contact STAUFF for alternative materials and surface finishings.

### Spare Parts / Accessories



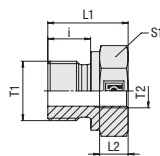
Profile Sealing Ring  
Type **WDG**

Page 238

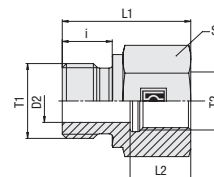
## Thread Reducer Type FI-RED-...-R



Version A



Version B



### Male / Female Whitworth Parallel Pipe Thread (BSPP)

### Metallic Sealing Edge

#### Ordering Codes

#### \*FI-RED\*-R\*1/2\*-R\*3/8\*-B\*-W3

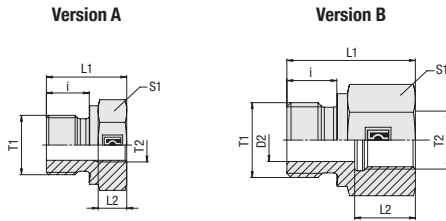
* Thread Reducer		<b>FI-RED</b>
* Thread Type T1	Whitworth Parallel Pipe Thread (BSPP)	<b>R</b>
* Thread Size T1	acc. to dimension table	<b>1/2</b>
Please always indicate thread sizes, e.g. 1/2!		
* Thread Type T2	Whitworth Parallel Pipe Thread (BSPP)	<b>R</b>
* Thread Size T2	acc. to dimension table	<b>3/8</b>
Please always indicate thread sizes, e.g. 3/8!		
* Seal Material	NBR (Buna-N®) FKM (Viton®)	<b>-B</b> <b>-V</b>
* Material Code	Steel, zinc/nickel-plated	<b>-W3</b>

Please contact STAUFF for alternative materials and surface finishings.

PN bar	Dimensions mm								Version	Torque N-m	Weight kg ca. per 100	Ordering Codes
	Thread T1	Thread T2	D2	i	L1	L2	S1	Thread T				
400	G 1/8	G 1/4	4	8	31	17	19	B	25	4,25	FI-RED-R1/8-R1/4-W3	
400	G 1/8	G 3/8	4	8	32	17	24	B	25	6,15	FI-RED-R1/8-R3/8-W3	
400	G 1/4	G 1/8	5	12	28	12	19	B	60	3,91	FI-RED-R1/4-R1/8-W3	
400	G 1/4	G 3/8	5	12	36	17	24	B	60	6,80	FI-RED-R1/4-R3/8-W3	
400	G 1/4	G 1/2	5	12	40	20	30	B	60	11,80	FI-RED-R1/4-R1/2-W3	
315	G 1/4	G 3/4	5	12	43	22	36	B	60	17,50	FI-RED-R1/4-R3/4-W3	
400	G 3/8	G 1/8	8	12	22,5	8	22	A	110	4,20	FI-RED-R3/8-R1/8-W3	
400	G 3/8	G 1/4	8	12	36	17	22	B	110	7,05	FI-RED-R3/8-R1/4-W3	
400	G 3/8	G 1/2	8	12	41	20	30	B	110	17,80	FI-RED-R3/8-R1/2-W3	
315	G 3/8	G 3/4	8	12	44	22	36	B	110	18,40	FI-RED-R3/8-R3/4-W3	
400	G 1/2	G 1/8	14	14	24	8	27	A	200	6,58	FI-RED-R1/2-R1/8-W3	
315	G 1/2	G 1/4	14	14	24	12,5	27	A	200	5,53	FI-RED-R1/2-R1/4-W3	
315	G 1/2	G 3/8	12	14	36	17	27	B	200	9,30	FI-RED-R1/2-R3/8-W3	
315	G 1/2	G 3/4	12	14	46	22	36	B	200	18,50	FI-RED-R1/2-R3/4-W3	
315	G 1/2	G 1	12	14	49	24,5	41	B	200	22,70	FI-RED-R1/2-R1-W3	
160	G 1/2	G 1 1/4	12	14	53	26,5	55	B	200	48,10	FI-RED-R1/2-R1-1/4-W3	

Male threaded studs were designed for female threaded ports in components made of steel. For applications with components made of softer mating materials (e.g. Aluminium), the use of connectors with additionally rolled male threads is recommended.

Please contact STAUFF prior to the assembly for further information.

Thread Reducer  
 Type FI-RED-...-R


## Metallic Sealing Edge

## Male / Female Whitworth Parallel Pipe Thread (BSPP)

PN bar	Dimensions mm								Version	Torque N-m	Weight kg ca. per 100	Ordering Codes
	Thread T1	Thread T2	D2	i	L1	L2	S1	Thread T				
400	G 3/4	G 1/4		16	26	12,5	32	A	320	10,20	FI-RED-R3/4-R1/4-W3	
400	G 3/4	G 3/8		16	26	12,5	32	A	320	8,70	FI-RED-R3/4-R3/8-W3	
400	G 3/4	G 1/2	16	16	41	20	32	B	320	14,60	FI-RED-R3/4-R1/2-W3	
400	G 3/4	G 1	16	16	51	24,5	41	B	320	24,60	FI-RED-R3/4-R1-W3	
400	G 3/4	G 1 1/4	16	16	55	26,5	55	B	320	48,40	FI-RED-R3/4-R1-1/4-W3	
250	G 3/4	G 1 1/2	16	16	57	28,5	60	B	320	57,00	FI-RED-R3/4-R1-1/2-W3	
315	G 1	G 1/4		18	29	12,5	41	A	500	19,10	FI-RED-R1-R1/4-W3	
315	G 1	G 3/8		18	29	12,5	41	A	500	17,90	FI-RED-R1-R3/8-W3	
315	G 1	G 1/2		18	29	14,5	41	A	500	15,40	FI-RED-R1-R1/2-W3	
315	G 1	G 3/4	20	18	47	22	41	B	500	27,60	FI-RED-R1-R3/4-W3	
160	G 1	G 1 1/4	20	18	57	26,5	55	B	500	52,10	FI-RED-R1-R1-1/4-W3	
160	G 1	G 1 1/2	20	18	59	28,5	60	B	500	59	FI-RED-R1-R1-1/2-W3	
160	G 1 1/4	G 1/2		20	32	14,5	50	A	600	31,30	FI-RED-R1-1/4-R1/2-W3	
160	G 1 1/4	G 3/4		20	32	16,5	50	A	600	26,50	FI-RED-R1-1/4-R3/4-W3	
160	G 1 1/4	G 1	25	20	53	24,5	50	B	600	4,7	FI-RED-R1-1/4-R1-W3	
160	G 1 1/4	G 1 1/2	25	20	60	28,5	60	B	600	63,3	FI-RED-R1-1/4-R1-1/2-W3	
160	G 1 1/2	G 1 1/4	32	22	58	26,5	55	B	800	53	FI-RED-R1-1/2-R1-1/4-W3	
160	G 1 1/2	G 1/2		22	36	14,5	55	A	800	47,30	FI-RED-R1-1/2-R1/2-W3	
160	G 1 1/2	G 3/4		22	36	14,5	55	A	800	41,90	FI-RED-R1-1/2-R3/4-W3	
160	G 1 1/2	G 1		22	36	18	55	A	800	34,10	FI-RED-R1-1/2-R1-W3	
160	G 2	G 1 1/4		24	62	20,5	70	A	1000	99,50	FI-RED-R2-R1-1/4-W3	
160	G 2	G 1 1/2	40	24	62	28,5	70	B	1000	107,30	FI-RED-R2-R1-1/2-W3	

## Ordering Codes

**\*FI-RED\*-R\*1/2\*-R\*3/8\*-B\*-W3**

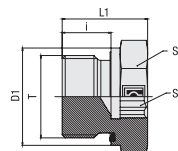
* Thread Reducer		FI-RED
* Thread Type T1	Whitworth Parallel Pipe Thread (BSPP)	R
* Thread Size T1	acc. to dimension table	1/2
Please always indicate thread sizes, e.g. 1/2!		
* Thread Type T2	Whitworth Parallel Pipe Thread (BSPP)	R
* Thread Size T2	acc. to dimension table	3/8
Please always indicate thread sizes, e.g. 3/8!		
* Seal Material	NBR (Buna-N®) FKM (Viton®)	-B -V
* Material Code	Steel, zinc/nickel-plated	-W3

Please contact STAUFF for alternative materials and surface finishings.

Male threaded studs were designed for female threaded ports in components made of steel. For applications with components made of softer mating materials (e.g. Aluminium), the use of connectors with additionally rolled male threads is recommended.

Please contact STAUFF prior to the assembly for further information.

## Blanking Screw for Ports (Heavy Duty) Type FI-VSV-...-R-WD



### Ordering Codes

#### \*FI-VSV\*-R\*1/2\*-WD\*-B\*-W3

* Blanking Screw for Ports		<b>FI-VSV</b>
* Thread Type	Whitworth Parallel Pipe Thread (BSPP)	<b>R</b>
* Thread Size	acc. to dimension table	<b>1/2</b>
Please always indicate thread sizes, e.g. 1/2!		
* Seal Type	Profile Sealing Ring	<b>-WD</b>
* Seal Material	NBR (Buna-N®) FKM (Viton®)	<b>-B</b> <b>-V</b>
* Material Code	Steel, zinc/nickel-plated	<b>-W3</b>

Please contact STAUFF for alternative materials and surface finishings.

### Spare Parts / Accessories



Profile Sealing Ring  
Type **WDG**

Page 238

### Whitworth Parallel Pipe Thread (BSPP)

### Profile Sealing Ring

PN bar	Dimensions mm						Torque N·m Thread T	Weight kg ca. per 100	Ordering Codes
	Thread T	D1	i	L1	S1	S2			
400	G 1/8	14	8	18	5	14	18	1,56	FI-VSV-R1/8-WD-B-W3
400	G 1/4	19	12	20	6	19	33	2,73	FI-VSV-R1/4-WD-B-W3
400	G 3/8	22	12	22	8	22	70	4,48	FI-VSV-R3/8-WD-B-W3
400	G 1/2	27	14	24	10	27	90	7,27	FI-VSV-R1/2-WD-B-W3
400	G 3/4	32	16	28	12	32	181	13,02	FI-VSV-R3/4-WD-B-W3
400	G 1	39,9	18	33	17	41	250	23,80	FI-VSV-R1-WD-B-W3
400	G 1 1/4	49,9	20	38	22	50	400	42,00	FI-VSV-R1-1/4-WD-B-W3
400	G 1 1/2	54,9	22	40	24	55	500	55,60	FI-VSV-R1-1/2-WD-B-W3

Standard seal material is NBR (Buna-N®).

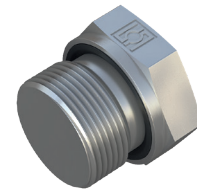
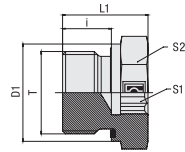
Male threaded studs were designed for female threaded ports in components made of steel. For applications with components made of softer mating materials (e.g. Aluminium), the use of connectors with additionally rolled male threads is recommended.

Please contact STAUFF prior to the assembly for further information.

Male stud acc. to ISO 1179-2 (Type E)  
Port acc. to ISO 1179-1

Torque recommendations with a tolerance of +10% and refer to original components from the STAUFF Connect product range made of steel with zinc/nickel coating and apply for Steel mating material.

## Blanking Screw for Ports (Heavy Duty) Type FI-VSV-...-M-WD



### Profile Sealing Ring

### Metric Parallel Thread

PN bar	Dimensions mm						Torque N-m	Weight kg ca. per 100	Ordering Codes
	Thread T	D1	i	L1	S1	S2			
400	M 10 x 1	14	8	18	5	14	12	1,58	FI-VSV-M10x1-WD-B-W3
400	M 12 x 1,5	17	12	20	6	17	25	2,13	FI-VSV-M12x1.5-WD-B-W3
400	M 14 x 1,5	19	12	22	6	19	45	3,35	FI-VSV-M14x1.5-WD-B-W3
400	M 16 x 1,5	22	12	22	8	22	55	4,30	FI-VSV-M16x1.5-WD-B-W3
400	M 18 x 1,5	24	12	22	8	24	70	5,38	FI-VSV-M18x1.5-WD-B-W3
400	M 20 x 1,5	27	14	22	10	27	80	6,09	FI-VSV-M20x1.5-WD-B-W3
400	M 22 x 1,5	27	14	22	10	27	125	6,77	FI-VSV-M22x1.5-WD-B-W3
400	M 26 x 1,5	32	16	30	12	32	180	14,33	FI-VSV-M26x1.5-WD-B-W3
400	M 27 x 2	32	16	28	12	32	180	13,23	FI-VSV-M27x2-WD-B-W3
400	M 33 x 2	40	18	33	17	41	250	29,32	FI-VSV-M33x2-WD-B-W3
400	M 42 x 2	50	20	38	22	50	400	57,35	FI-VSV-M42x2-WD-B-W3
400	M 48 x 2	55	22	40	24	55	500	73,79	FI-VSV-M48x2-WD-B-W3

Standard seal material is NBR (Buna-N®).

Male threaded studs were designed for female threaded ports in components made of steel. For applications with components made of softer mating materials (e.g. Aluminium), the use of connectors with additionally rolled male threads is recommended.

Please contact STAUFF prior to the assembly for further information.

Male stud acc. to ISO 9974-2 (Type E)  
Port acc. to ISO 9974-1

Torque recommendations with a tolerance of +10% and refer to original components from the STAUFF Connect product range made of steel with zinc/nickel coating and apply for Steel mating material.

### Ordering Codes

#### \*FI-VSV\*-M\*12x1.5\*-WD\*-B\*-W3

* Blanking Screw for Ports		<b>FI-VSV</b>
* Thread Type	Metric Parallel Thread	<b>M</b>
* Thread Size	acc. to dimension table	<b>12x1.5</b>
Please always indicate thread sizes, e.g. 12x1.5!		
* Seal Type	Profile Sealing Ring	<b>-WD</b>
* Seal Material	NBR (Buna-N®) FKM (Viton®)	<b>-B</b> <b>-V</b>
* Material Code	Steel, zinc/nickel-plated	<b>-W3</b>

Please contact STAUFF for alternative materials and surface finishings.

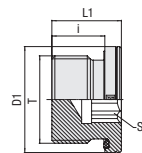
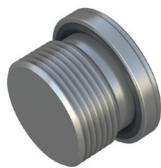
### Spare Parts / Accessories



Profile Sealing Ring  
Type **WDG**

Page 238

## Blanking Screw for Ports Type FI-VS-...-R-WD



### Ordering Codes

#### \*FI-VS\*-R\*1/2\*-WD\*-B\*-W3

* Blanking Screw for Ports		<b>FI-VS</b>
* Thread Type	Whitworth Parallel Pipe Thread (BSPP)	<b>R</b>
* Thread Size	acc. to dimension table	<b>1/2</b>
Please always indicate thread sizes, e.g. 1/2!		
* Seal Type	Profile Sealing Ring	<b>-WD</b>
* Seal Material	NBR (Buna-N®) FKM (Viton®)	<b>-B</b> <b>-V</b>
* Material Code	Steel, zinc/nickel-plated	<b>-W3</b>

Please contact STAUFF for alternative materials and surface finishings.

### Spare Parts / Accessories



Profile Sealing Ring  
Type **WDG**

Page 238

### Whitworth Parallel Pipe Thread (BSPP)

### Profile Sealing Ring

PN bar	Dimensions mm					Torque N-m	Weight kg ca. per 100	Ordering Codes
	Thread T	D1	i	L1	S1			
400	G 1/8	14	8	12,3	5	15	0,70	FI-VS-R1/8-WD-B-W3
400	G 1/4	19	12	17,3	6	25	1,90	FI-VS-R1/4-WD-B-W3
400	G 3/8	22	12	17,3	8	50	2,70	FI-VS-R3/8-WD-B-W3
400	G 1/2	27	14	19,3	10	70	4,60	FI-VS-R1/2-WD-B-W3
400	G 3/4	32	16	21,3	12	120	8,00	FI-VS-R3/4-WD-B-W3
400	G 1	40	16	22,8	17	200	12,80	FI-VS-R1-WD-B-W3
315	G 1 1/4	50	16	22,8	22	320	19,90	FI-VS-R1-1/4-WD-B-W3
400	G 1 1/4	50	20	26,5	22	400	22,50	FI-VS-R1-1/4-WD-B-W3-I20
315	G 1 1/2	55	16	22,8	24	400	26,20	FI-VS-R1-1/2-WD-B-W3
400	G 1 1/2	55	22	28,5	24	500	31,70	FI-VS-R1-1/2-WD-B-W3-I22
250	G 2	75	24	34	24	750	73	FI-VS-R2-WD-B-W3

Standard seal material is NBR (Buna-N®).

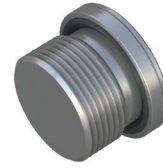
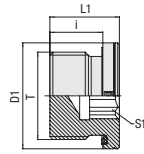
Male threaded studs were designed for female threaded ports in components made of steel. For applications with components made of softer mating materials (e.g. Aluminium), the use of connectors with additionally rolled male threads is recommended.

Please contact STAUFF prior to the assembly for further information.

Male stud acc. to ISO 1179-2 (Type E)  
Port acc. to ISO 1179-1

Torque recommendations with a tolerance of +10% and refer to original components from the STAUFF Connect product range made of steel with zinc/nickel coating and apply for Steel mating material.

Blanking Screw for Ports  
Type FI-VS-...-M-WD



Profile Sealing Ring

Metric Parallel Thread

PN bar	Dimensions mm					Torque N-m	Weight kg ca. per 100	Ordering Codes
	Thread T	D1	i	L1	S1			
400	M 8 x 1	12	8	12	4	10	0,50	FI-VS-M8x1-WD-B-W3
400	M 10 x 1	14	8	12,3	5	12	0,70	FI-VS-M10x1-WD-B-W3
400	M 12 x 1,5	17	12	17,3	6	23	1,50	FI-VS-M12x1.5-WD-B-W3
400	M 14 x 1,5	19	12	17,3	6	30	2,00	FI-VS-M14x1.5-WD-B-W3
400	M 16 x 1,5	22	12	17,3	8	50	2,60	FI-VS-M16x1.5-WD-B-W3
400	M 18 x 1,5	24	12	17,3	8	65	3,30	FI-VS-M18x1.5-WD-B-W3
400	M 20 x 1,5	26	14	19,3	10	80	4,30	FI-VS-M20x1.5-WD-B-W3
400	M 22 x 1,5	27	14	19,3	10	90	5,10	FI-VS-M22x1.5-WD-B-W3
400	M 26 x 1,5	32	16	21,3	12	100	8,00	FI-VS-M26x1.5-WD-B-W3
400	M 27 x 2	32	16	21,3	12	130	8,20	FI-VS-M27x2-WD-B-W3
400	M 33 x 2	40	16	22,8	17	250	13,10	FI-VS-M33x2-WD-B-W3
250	M 42 x 2	50	16	22,8	22	310	20,40	FI-VS-M42x2-WD-B-W3
250	M 48 x 2	55	16	22,8	24	380	26,90	FI-VS-M48x2-WD-B-W3

Standard seal material is NBR (Buna-N®).

Male threaded studs were designed for female threaded ports in components made of steel. For applications with components made of softer mating materials (e.g. Aluminium), the use of connectors with additionally rolled male threads is recommended.

Please contact STAUFF prior to the assembly for further information.

Male stud acc. to ISO 9974-2 (Type E)  
Port acc. to ISO 9974-1

Torque recommendations with a tolerance of +10% and refer to original components from the STAUFF Connect product range made of steel with zinc/nickel coating and apply for Steel mating material.

Ordering Codes

**\*FI-VS\*-M\*12x1.5\*-WD\*-B\*-W3**

* Blanking Screw for Ports		<b>FI-VS</b>
* Thread Type	Metric Parallel Thread	<b>M</b>
* Thread Size	acc. to dimension table	<b>12x1.5</b>
Please always indicate thread sizes, e.g. 12x1.5!		
* Seal Type	Profile Sealing Ring	<b>-WD</b>
* Seal Material	NBR (Buna-N®) FKM (Viton®)	<b>-B</b> <b>-V</b>
* Material Code	Steel, zinc/nickel-plated	<b>-W3</b>

Please contact STAUFF for alternative materials and surface finishings.

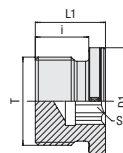
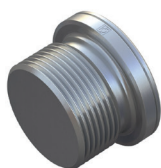
Spare Parts / Accessories



Profile Sealing Ring  
Type **WDG**

Page 238

## Blanking Screw for Ports Type FI-VS-...-R



### Ordering Codes

#### \*FI-VS\*-R\*1/2\*-W3

\* Blanking Screw for Ports

\* Thread Type Whitworth Parallel  
Pipe Thread (BSPP)

\* Thread Size acc. to dimension table

Please always indicate thread sizes, e.g. 1/2!

\* Material Code Steel, zinc/nickel-plated

Please contact STAUFF for alternative  
materials and surface finishings.

FI-VS

R

1/2

-W3

### Whitworth Parallel Pipe Thread (BSPP)

PN bar	Dimensions mm					Torque N·m Thread T	Weight kg ca. per 100	Ordering Codes
	Thread T	D1	i	L1	S1			
400	G 1/8	14	8	12,3	5	25	0,70	FI-VS-R1/8-W3
400	G 1/4	18	12	17,3	6	40	1,80	FI-VS-R1/4-W3
400	G 3/8	22	12	17,3	8	95	2,70	FI-VS-R3/8-W3
400	G 1/2	26	14	19,3	10	130	4,60	FI-VS-R1/2-W3
400	G 3/4	32	16	21,3	12	250	7,90	FI-VS-R3/4-W3
400	G 1	39	16	22,8	17	400	12,80	FI-VS-R1-W3
315	G 1 1/4	49	16	22,8	22	600	19,30	FI-VS-R1-1/4-W3
315	G 1 1/2	55	16	22,8	24	800	26,10	FI-VS-R1-1/2-W3

### Metallic Sealing Edge

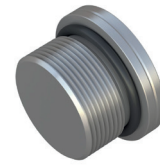
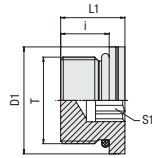
Male threaded studs were designed for female threaded ports in components made of steel. For applications with components made of softer mating materials (e.g. Aluminium), the use of connectors with additionally rolled male threads is recommended.

Please contact STAUFF prior to the assembly for further information.

Male stud acc. to DIN 3852-2 (Form B) / ISO 1179-4 (Type B)  
Port acc. to DIN 3852-2 (Form X) / ISO 1179-1

Torque recommendations with a tolerance of +10% and refer to original components from the STAUFF Connect product range made of steel with zinc/nickel coating and apply for Steel mating material.

### Blanking Screw for Ports Type FI-VS-...-M-OR



#### O-Ring

#### Metric Parallel Thread

PN bar	Dimensions mm					Torque N-m	Weight kg ca. per 100	Ordering Codes
	Thread T	D1	i	L1	S1			
630	M 10 x 1	13,8	9,5	13,5	5	15	0,8	FI-VS-M10x1-OR-B-W3
630	M 12 x 1,5	16,8	11	15,5	6	22	1,4	FI-VS-M12x1.5-OR-B-W3
630	M 14 x 1,5	18,8	11	16	6	45	2,0	FI-VS-M14x1.5-OR-B-W3
630	M 16 x 1,5	21,8	12,5	17,5	8	55	2,7	FI-VS-M16x1.5-OR-B-W3
630	M 18 x 1,5	23,8	14	19	8	70	3,8	FI-VS-M18x1.5-OR-B-W3
630	M 22 x 1,5	26,8	15	20	10	100	5,5	FI-VS-M22x1.5-OR-B-W3
400	M 26 x 1,5	31,8	16	21	12	170	7,7	FI-VS-M26x1.5-OR-B-W3
400	M 27 x 2	31,8	18,5	23,5	12	180	9,4	FI-VS-M27x2-OR-B-W3
400	M 33 x 2	40,8	18,5	24,5	14	215	15,6	FI-VS-M33x2-OR-B-W3
400	M 42 x 2	49,8	19	25	22	330	24,5	FI-VS-M42x2-OR-B-W3
400	M 48 x 2	54,8	21,5	27,5	24	420	37,1	FI-VS-M48x2-OR-B-W3

Standard seal material is NBR (Buna-N®).

Male stud acc. to ISO 6149-2/-3  
Port acc. to ISO 6149-1

Male threaded studs were designed for female threaded ports in components made of steel. For applications with components made of softer mating materials (e.g. Aluminium), the use of connectors with additionally rolled male threads is recommended.

Please contact STAUFF prior to the assembly for further information.

Torque recommendations with a tolerance of +10% and refer to original components from the STAUFF Connect product range made of steel with zinc/nickel coating and apply for Steel mating material.

#### Ordering Codes

#### \*FI-VS\*-M\*12x1.5\*-OR\*-B\*-W3

* Blanking Screw for Ports		FI-VS
* Thread Type	Metric Parallel Thread	M
* Thread Size	acc. to dimension table	12x1.5
Please always indicate thread sizes, e.g. 12x1.5!		
* Seal Type	O-Ring	-OR
* Seal Material	NBR (Buna-N®) FKM (Viton®)	-B -V
* Material Code	Steel, zinc/nickel-plated	-W3

Please contact STAUFF for alternative materials and surface finishings.

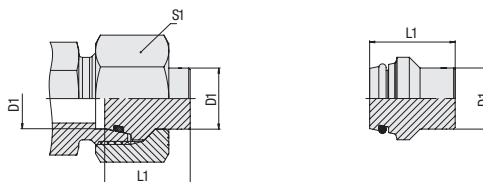
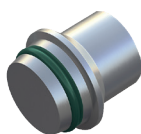
#### Spare Parts / Accessories



O-Ring  
Type **O-RING**

Page 239

## Blanking Plug with 24° Taper / O-Ring (DKO) Type FI-VD ▪ Series L / S



### Ordering Codes

**\*FI-VD\*-15\*L\*-V\*-W3\*-M**

* Blanking Plug with 24° Taper / O-Ring (DKO)	<b>FI-VD</b>
* Outside Tube Diameter D1 (in mm)	<b>-15</b>
* Series	Light Series <b>L</b> Heavy Series <b>S</b>
* Seal Material	FKM (Viton®) <b>-V</b>
* Material Code	Steel, zinc/nickel-plated <b>-W3</b>
Please contact STAUFF for alternative materials and surface finishings.	
* Assembling	Blanking plug only <b>—</b> Blanking plug assembled with union nut <b>-M</b>

### Connecting Parts



Union Nut  
Type **FI-M**

Page 33

### Spare Parts / Accessories



O-Ring  
Type **O-RING**

Page 239

Series	Tube OD	PN bar	Dimensions mm		Weight kg ca. per 100	Ordering Codes <sup>3</sup> Blanking plug only	Ordering Codes Blanking plug with union nut	
	mm D1		L1 <sup>1</sup>	S1				
L	6	800	16,5	14	0,57	FI-VD-06L/S-V-W3	FI-VD-06L-V-W3-M	
	8	800	16,5	17	0,90	FI-VD-08L/S-V-W3	FI-VD-08L-V-W3-M	
	10	800	17	19	1,37	FI-VD-10L/S-V-W3	FI-VD-10L-V-W3-M	
	12	630	17	22	1,88	FI-VD-12L/S-V-W3	FI-VD-12L-V-W3-M	
	15	400	18	27	3,00	FI-VD-15L-V-W3	FI-VD-15L-V-W3-M	
	18	400	18,5	32	4,36	FI-VD-18L-V-W3	FI-VD-18L-V-W3-M	
	22	250	19,3	36	6,52	FI-VD-22L-V-W3	FI-VD-22L-V-W3-M	
	28	250	19,7	41	10,45	FI-VD-28L-V-W3	FI-VD-28L-V-W3-M	
	35	250	23,2	50	19,66	FI-VD-35L-V-W3	FI-VD-35L-V-W3-M	
	42	250	23,2	60	27,73	FI-VD-42L-V-W3	FI-VD-42L-V-W3-M	
	S	6	800	16,5	17	0,57	FI-VD-06L/S-V-W3	FI-VD-06S-V-W3-M
		8	800	16,5	19	0,90	FI-VD-08L/S-V-W3	FI-VD-08S-V-W3-M
10		800	17	22	1,37	FI-VD-10L/S-V-W3	FI-VD-10S-V-W3-M	
12		630	17	24	1,88	FI-VD-12L/S-V-W3	FI-VD-12S-V-W3-M	
14		630	19	27	2,78	FI-VD-14S-V-W3	FI-VD-14S-V-W3-M	
16		630	19	30	3,54	FI-VD-16S-V-W3	FI-VD-16S-V-W3-M	
20		420	23,3	36	6,97	FI-VD-20S-V-W3	FI-VD-20S-V-W3-M	
25		420	24,2	46	10,94	FI-VD-25S-V-W3	FI-VD-25S-V-W3-M	
30		420	25,4	50	16,34	FI-VD-30S-V-W3	FI-VD-30S-V-W3-M	
38		420	26,7	60	27,11	FI-VD-38S-V-W3	FI-VD-38S-V-W3-M	

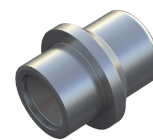
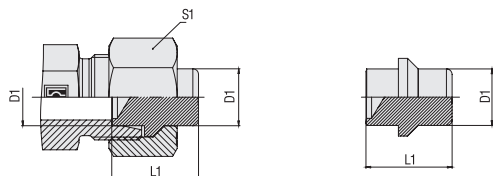
<sup>1</sup> Approximate dimension in assembled condition.

<sup>2</sup> Weight excluding union nut.

<sup>3</sup> Standard scope of delivery: Blanking plug only.

Standard seal material is FKM (Viton®).

## Blanking Plug with Sealing Edge Type FI-BUZ • Series L / S



Series	Tube OD mm D1	PN bar	Dimensions mm		Weight kg ca. per 100	Ordering Codes <sup>3</sup>
			L1 <sup>1</sup>	S1		
L	6	500	19,5	14	0,55	FI-BUZ-06L/S-W3
	8	500	19,5	17	0,90	FI-BUZ-08L/S-W3
	10	500	21,5	19	1,48	FI-BUZ-10L/S-W3
	12	400	22	22	2,13	FI-BUZ-12L/S-W3
	15	400	22	27	3,20	FI-BUZ-15L-W3
	18	400	24	32	5,00	FI-BUZ-18L-W3
	22	250	26	36	7,90	FI-BUZ-22L-W3
	28	250	25,5	41	11,90	FI-BUZ-28L-W3
	35	250	32	50	23,50	FI-BUZ-35L-W3
	42	250	32,5	60	38,50	FI-BUZ-42L-W3
S	6	800	19,5	17	0,55	FI-BUZ-06L/S-W3
	8	800	19,5	19	0,90	FI-BUZ-08L/S-W3
	10	800	21,5	22	1,48	FI-BUZ-10L/S-W3
	12	630	22	24	2,13	FI-BUZ-12L/S-W3
	14	630	23,5	27	3,12	FI-BUZ-14S-W3
	16	630	25,5	30	4,27	FI-BUZ-16S-W3
	20	400	30,5	36	8,00	FI-BUZ-20S-W3
	25	400	32,5	46	17,90	FI-BUZ-25S-W3
	30	400	35,5	50	20,00	FI-BUZ-30S-W3
	38	400	42	60	36,60	FI-BUZ-38S-W3

<sup>1</sup> Approximate dimension in assembled condition.

<sup>2</sup> Weight excluding union nut.

<sup>3</sup> Standard scope of delivery: Blanking plug only.

### Ordering Codes

**\*FI-BUZ\*-15\*L\*-W3\*-M**

* Blanking Plug with Sealing Edge	FI-BUZ
* Outside Tube Diameter D1 (in mm)	-15
* Series	Light Series L Heavy Series S
* Material Code	Steel, zinc/nickel-plated -W3
Please contact STAUFF for alternative materials and surface finishings.	
* Assembling / Kitting	Blanking plug only — Blanking plug supplied with union nut -M

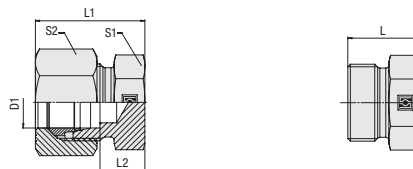
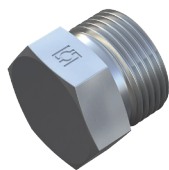
### Connecting Parts



Union Nut  
Type FI-M

Page 33

## Blanking Plug for Tube Ends Type FI-VSK ▪ Series L / S



### Ordering Codes

#### \*FI-VSK\*-10\*L\*-W3\*-MS

* Blanking Plug for Tube Ends		<b>FI-VSK</b>
* Outside Tube Diameter D1 (in mm)		<b>-10</b>
* Series	Light Series	<b>L</b>
	Heavy Series	<b>S</b>
* Material Code	Steel, zinc/nickel-plated	<b>-W3</b>
Please contact STAUFF for alternative materials and surface finishings.		
* Assembling / Kitting	Blanking plug only	<b>—</b>
	Blanking plug supplied with cutting ring and union nut	<b>-MS</b>
	Blanking plug supplied with soft-sealing cutting ring and union nut	<b>-MSV</b>

Series	Tube OD mm D1	PN bar	Dimensions mm					Weight kg ca. per 100	Ordering Codes <sup>3</sup>
			L	L1 <sup>1</sup>	L2	S1	S2		
L	6	500	17	22	7	14	14	1,40	FI-VSK-06L-W3
	8	500	17	23	8	17	17	1,93	FI-VSK-08L-W3
	10	500	20	24	9	17	19	2,55	FI-VSK-10L-W3
	12	400	21	25	10	19	22	3,44	FI-VSK-12L-W3
	15	400	20	26	11	24	27	4,90	FI-VSK-15L-W3
	18	400	21	28	11,5	27	32	6,80	FI-VSK-18L-W3
	22	250	23	30	13,5	32	36	10,70	FI-VSK-22L-W3
	28	250	23	31	14,5	41	41	15,20	FI-VSK-28L-W3
	35	250	29	36	14,5	46	50	25,90	FI-VSK-35L-W3
	42	250	30	39	16	55	60	35,30	FI-VSK-42L-W3
S	6	800	17	26	11	17	17	1,80	FI-VSK-06S-W3
	8	800	17	28	13	17	19	2,16	FI-VSK-08S-W3
	10	800	20	29	12,5	19	22	3,34	FI-VSK-10S-W3
	12	630	21	31	14,5	22	24	4,60	FI-VSK-12S-W3
	14	630	23	34	16	24	27	5,88	FI-VSK-14S-W3
	16	630	24	34	15,5	27	30	7,54	FI-VSK-16S-W3
	20	420	28	39	17,5	32	36	12,50	FI-VSK-20S-W3
	25	420	31	44	20	41	46	21,40	FI-VSK-25S-W3
	30	420	34	47	20,5	46	50	30,40	FI-VSK-30S-W3
	38	420	38	54	23	55	60	40,80	FI-VSK-38S-W3

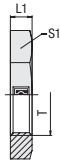
### Connecting Parts

	Cutting Ring Type <b>FI-DS</b>	Page 28
	Soft-Sealing Cutting Ring Type <b>FI-WDDS</b>	Page 29
	Support Sleeve Type <b>FI-VH</b>	Page 31
	STAUFF Form EVO Sealing Ring Type <b>FI-FD</b>	Page 32
	Union Nut Type <b>FI-M</b>	Page 33
	37° Flared Tube Fitting Set Type <b>FI-AB</b>	Page 37

<sup>1</sup> Approximate dimension in assembled condition.

<sup>2</sup> Weight excluding cutting ring and union nut.

<sup>3</sup> Standard scope of delivery: Blanking plug only.

Hexagon Lock Nut  
 Type FI-SKM • Series L / S


for Straight Bulkhead Fittings / Bulkhead Elbows

Series	Dimensions mm			Weight kg ca. per 100	Ordering Codes
	Thread T	L1	S1		
L	M 12 x 1,5	6	17	0,66	FI-SKM-06L-W3
	M 14 x 1,5	6	19	0,76	FI-SKM-08L/06S-W3
	M 16 x 1,5	6	22	1,04	FI-SKM-10L/08S-W3
	M 18 x 1,5	6	24	1,17	FI-SKM-12L/10S-W3
	M 22 x 1,5	7	30	2,25	FI-SKM-15L/14S-W3
	M 26 x 1,5	8	36	3,75	FI-SKM-18L-W3
	M 30 x 2	8	41	4,79	FI-SKM-22L/20S-W3
	M 36 x 2	9	46	5,90	FI-SKM-28L/25S-W3
	M 45 x 2	9	55	7,60	FI-SKM-35L-W3
	M 52 x 2	10	65	12,20	FI-SKM-42L/38S-W3
S	M 14 x 1,5	6	19	0,76	FI-SKM-08L/06S-W3
	M 16 x 1,5	6	22	1,04	FI-SKM-10L/08S-W3
	M 18 x 1,5	6	24	1,17	FI-SKM-12L/10S-W3
	M 20 x 1,5	6	27	1,54	FI-SKM-12S-W3
	M 22 x 1,5	7	30	2,25	FI-SKM-15L/14S-W3
	M 24 x 1,5	7	32	2,40	FI-SKM-16S-W3
	M 30 x 2	8	41	4,79	FI-SKM-22L/20S-W3
	M 36 x 2	9	46	5,90	FI-SKM-28L/25S-W3
	M 42 x 2	9	50	5,70	FI-SKM-30S-W3
	M 52 x 2	10	65	12,20	FI-SKM-42L/38S-W3

## Ordering Codes

**\*FI-SKM\*-06\*L\*-W3**

* Hexagon Lock Nut for Bulkhead Fittings	FI-SKM
* Outside Tube Diameter D1 (in mm)	-06
* Series	Light Series L Heavy Series S
* Material Code	Steel, zinc/nickel-plated -W3

Please contact STAUFF for alternative materials and surface finishings.

## Profile Sealing Ring for Male Studs Type WDG



### Whitworth Parallel Pipe Thread (BSPP)

Male stud acc. to ISO 1179-2 (Type E) / Port according to ISO 1179-1

Dimensions mm				Ordering Codes	
for Thread	D1	D2	L1	NBR (Buna-N®)	FKM (Viton®)
G 1/8	8,4	11,9	1	WDG-8.4x11.9x1-B90	WDG-8.4x11.9x1-V90
G 1/4	11,6	16,5	1,5	WDG-11.6x16.5x1.5-B90	WDG-11.6x16.5x1.5-V90
G 3/8	14,7	18,9	1,5	WDG-14.7x18.9x1.5-B90	WDG-14.7x18.9x1.5-V90
G 1/2	18,5	23,9	1,5	WDG-18.5x23.9x1.5-B90	WDG-18.5x23.9x1.5-V80
G 3/4	23,9	29,2	1,5	WDG-23.9x29.2x1.5-B90	WDG-23.9x29.2x1.5-V80
G 1	29,7	35,7	2	WDG-29.7x35.7x2-B90	WDG-29.7x35.7x2-V80
G 1 1/4	38,8	45,8	2	WDG-38.8x45.8x2-B90	WDG-38.8x45.8x2-V80
G 1 1/2	44,7	50,7	2	WDG-44.7x50.7x2-B90	WDG-44.7x50.7x2-V80
G 2	56,5	66,5	4	WDG-56.5x66.5x4-B90	WDG-56.5x66.5x4-V80

### Metric Parallel Thread

Male stud according to ISO 9974-2 (Type E) / Port according to ISO 9974-1

Dimensions mm				Ordering Codes	
for Thread	D1	D2	L1	NBR (Buna-N®)	FKM (Viton®)
M 8 x 1	6,5	9,9	1	WDG-6.5x9.9x1-B90	WDG-6.5x9.9x1-V90
M 10 x 1	8,4	11,9	1	WDG-8.4x11.9x1-B90	WDG-8.4x11.9x1-V90
M 12 x 1,5	9,8	14,5	1,5	WDG-9.8x14.5x1.5-B90	WDG-9.8x14.5x1.5-V90
M 14 x 1,5	11,6	16,5	1,5	WDG-11.6x16.5x1.5-B90	WDG-11.6x16.5x1.5-V90
M 16 x 1,5	13,8	18,9	1,5	WDG-13.8x18.9x1.5-B80	WDG-13.8x18.9x1.5-V80
M 18 x 1,5	15,7	20,9	1,5	WDG-15.7x20.9x1.5-B90	WDG-15.7x20.9x1.5-V80
M 20 x 1,5	17,8	22,9	1,5	WDG-17.8x22.9x1.5-B90	WDG-17.8x22.9x1.5-V90
M 22 x 1,5	19,6	24,3	1,5	WDG-19.6x24.3x1.5-B90	WDG-19.6x24.3x1.5-V90
M 26 x 1,5	23,9	29,2	1,5	WDG-23.9x29.2x1.5-B90	WDG-23.9x29.2x1.5-V80
M 27 x 2	23,9	29,2	1,5	WDG-23.9x29.2x1.5-B90	WDG-23.9x29.2x1.5-V80
M 33 x 2	29,7	35,7	2	WDG-29.7x35.7x2-B90	WDG-29.7x35.7x2-V80
M 42 x 2	38,8	45,8	2	WDG-38.8x45.8x2-B90	WDG-38.8x45.8x2-V80
M 48 x 2	44,7	50,7	2	WDG-44.7x50.7x2-B90	WDG-44.7x50.7x2-V80

**O-Ring for Male Studs  
Type O-RING**

**Male stud according to ISO 6149-2/-3 / Port according to ISO 6149-1**
**Metric Parallel Thread**

Dimensions mm for Thread	Ordering Codes	
	NBR (Buna-N®)	FKM (Viton®)
M 8 x 1	O-RING-6.07x1.63-B90	O-RING-6.07x1.63-V90
M 10 x 1	O-RING-8.1x1.6-B90	O-RING-8.1x1.6-V90
M 12 x 1,5	O-RING-9.3x2.2-B90	O-RING-9.3x2.2-V90
M14 x 1,5	O-RING-11.3x2.2-B90	O-RING-11.3x2.2-V90
M16 x 1,5	O-RING-13.3x2.2-B90	O-RING-13.3x2.2-V90
M18 x 1,5	O-RING-15.3x2.2-B90	O-RING-15.3x2.2-V90
M22 x 1,5	O-RING-19.3x2.2-B90	O-RING-19.3x2.2-V90
M26 x 1,5	O-RING-23.3x2.4-B90	O-RING-23.3x2.4-V90
M27 x 2	O-RING-23.6x2.9-B90	O-RING-23.6x2.9-V90
M30 x 2	O-RING-26.62 x2.95-B90	O-RING-26.62 x2.95-V90
M33 x 2	O-RING-29.6x2.9-B90	O-RING-29.6x2.9-V90
M42 x 2	O-RING-38.6x2.9-B90	O-RING-38.6x2.9-V90
M48 x 2	O-RING-44.6x2.9-B90	O-RING-44.6x2.9-V90

**Male stud according to ISO 11926-2/-3 / Port according to ISO 11926-1**
**UN / UNF Thread**

Dimensions mm for Thread	Ordering Codes	
	NBR (Buna-N®)	FKM (Viton®)
7/16-20 UNF	O-RING-8.92x1.83-B90	O-RING-8.92x1.83-V90
1/2-20 UNF	O-RING-10.52x1.83-B90	O-RING-10.52x1.83-V90
9/16-18 UNF	O-RING-11.89x1.98-B90	O-RING-11.89x1.98-V90
3/4-16 UNF	O-RING-16.36x2.2-B90	O-RING-16.36x2.2-V90
7/8-14 UNF	O-RING-19.18x2.46-B90	O-RING-19.18x2.46-V 90
1 1/16-12 UN	O-RING-23.47x2.95-B90	O-RING-23.47x2.95-V80
1 3/16-12 UN	O-RING-26.62 x2.95-B90	O-RING-26.62 x 2.95-V90
1 5/16-12 UN	O-RING-29.74x2.95-B90	O-RING-29.74x2.95-V90
1 5/8-12 UN	O-RING-37.47x3-B90	O-RING-37.47x3-V90
1 7/8-12 UN	O-RING-43.69x3-B90	O-RING-43.69x3-V90

**Whitworth Parallel Pipe Thread (BSPP)**

Dimensions mm for Thread	Ordering Codes	
	NBR (Buna-N®)	FKM (Viton®)
G 1/8	O-RING-7.97x1.88-B90	O-RING-7.97x1.88-V90
G 1/4	O-RING-10.77x2.62-B90	O-RING-10.77x2.62-V90
G 3/8	O-RING-13.94x2.62-B90	O-RING-13.94x2.62-V90
G 1/2	O-RING-17.86x2.62-B90	O-RING-17.86x2.62-V90
G 3/4	O-RING-23.47x2.62-B90	O-RING-23.47x2.62-V90
G 1	O-RING-29.74x3.53-B90	O-RING-29.74x3.53-V90
G 1 1/4	O-RING-37.69x3.53-B90	O-RING-37.69x3.53-V90
G 1 1/2	O-RING-44.04x3.53-B90	O-RING-44.04x3.53-V90

## O-Ring for 24°/37° Flared Cone Adaptors

### Type O-RING



#### 24° Taper of the Flared Cone Adaptor

Series	Tube OD mm	Ordering Codes	
		NBR (Buna-N®)	FKM (Viton®)
L	6	O-RING-4.5x1.5-B90	O-RING-4.5x1.5-V90
	8	O-RING-6.5x1.5-B90	O-RING-6.5x1.5-V90
	10	O-RING-8.5x1.5-B90	O-RING-8.5x1.5-V90
	12	O-RING-10x1.5-B90	O-RING-10x1.5-V90
	15	O-RING-12.5x2-B90	O-RING-12.5x2-V90
	18	O-RING-16x2-B90	O-RING-16x2-V90
	22	O-RING-20x2-B90	O-RING-20x2-V90
	28	O-RING-26x2-B90	O-RING-26x2-V90
	35	O-RING-32x2.5-B90	O-RING-32x2.5-V90
	42	O-RING-38x2.5-B90	O-RING-38x2.5-V90
S	6	O-RING-4.5x1.5-B90	O-RING-4.5x1.5-V90
	8	O-RING-6.5x1.5-B90	O-RING-6.5x1.5-V90
	10	O-RING-8.5x1.5-B90	O-RING-8.5x1.5-V90
	12	O-RING-10x1.5-B90	O-RING-10x1.5-V90
	14	O-RING-12x2-B90	O-RING-12x2-V90
	16	O-RING-14x2-B90	O-RING-14x2-V90
	20	O-RING-17.3x2.4-B90	O-RING-17.3x2.4-V90
	25	O-RING-22.3x2.4-B90	O-RING-22.3x2.4-V90
	30	O-RING-27.3x2.4-B90	O-RING-27.3x2.4-V90
	38	O-RING-35x2.5-B90	O-RING-35x2.5-V90

## O-Ring for 24°/37° Flared Cone Adaptors Type O-RING



37° Taper of the Flared Cone Adaptor

Series	Tube OD mm	Ordering Codes	
		NBR (Buna-N®)	FKM (Viton®)
L	6	O-RING-4.4x0.8-B90	O-RING-4.4x0.8-V90
	8	O-RING-6x0.8-B90	O-RING-6x0.8-V90
	10	O-RING-7.5x0.8-B90	O-RING-7.5x0.8-V90
	12	O-RING-9.5x0.8-B90	O-RING-9.5x0.8-V90
	15	O-RING-12.5x0.8-B90	O-RING-12.5x0.8-V90
	18	O-RING-15x1-B90	O-RING-15x1-V90
	22	O-RING-18x1-B90	O-RING-18x1-V90
	28	O-RING-23x1-B90	O-RING-23x1-V90
	35	O-RING-30x1-B90	O-RING-30x1-V90
	42	O-RING-37x1-B90	O-RING-37x1-V90
S	6	O-RING-4.4x0.8-B90	O-RING-4.4x0.8-V90
	8	O-RING-6x0.8-B90	O-RING-6x0.8-V90
	10	O-RING-7.5x0.8-B90	O-RING-7.5x0.8-V90
	12	O-RING-9.5x0.8-B90	O-RING-9.5x0.8-V90
	14	O-RING-11x1-B90	O-RING-11x1-V90
	16	O-RING-12.5x1-B90	O-RING-12.5x1-V90
	20	O-RING-16x1-B90	O-RING-16x1-V90
	25	O-RING-20x1-B90	O-RING-20x1-V90
	30	O-RING-25x1-B90	O-RING-25x1-V90
	38	O-RING-31.47x1.78-B90	O-RING-31.47x1.78-V90

## O-Ring for for DKO Taper Fittings / 24° Weld Cones Type O-RING



Series	Tube OD mm	Ordering Codes	
		NBR (Buna-N®)	FKM (Viton®)
L	6	O-RING-4.5x1.5-B90	O-RING-4.5x1.5-V90
	8	O-RING-6.5x1.5-B90	O-RING-6.5x1.5-V90
	10	O-RING-8.5x1.5-B90	O-RING-8.5x1.5-V90
	12	O-RING-10x1.5-B90	O-RING-10x1.5-V90
	15	O-RING-12.5x2-B90	O-RING-12.5x2-V90
	18	O-RING-16x2-B90	O-RING-16x2-V90
	22	O-RING-20x2-B90	O-RING-20x2-V90
	28	O-RING-26x2-B90	O-RING-26x2-V90
	35	O-RING-32x2.5-B90	O-RING-32x2.5-V90
	42	O-RING-38x2.5-B90	O-RING-38x2.5-V90
S	6	O-RING-4.5x1.5-B90	O-RING-4.5x1.5-V90
	8	O-RING-6.5x1.5-B90	O-RING-6.5x1.5-V90
	10	O-RING-8.5x1.5-B90	O-RING-8.5x1.5-V90
	12	O-RING-10x1.5-B90	O-RING-10x1.5-V90
	14	O-RING-12x2-B90	O-RING-12x2-V90
	16	O-RING-14x2-B90	O-RING-14x2-V90
	20	O-RING-17.3x2.4-B90	O-RING-17.3x2.4-V90
	25	O-RING-22.3x2.4-B90	O-RING-22.3x2.4-V90
	30	O-RING-27.3x2.4-B90	O-RING-27.3x2.4-V90
	38	O-RING-35x2.5-B90	O-RING-35x2.5-V90

## O-Ring for Banjo Bolts of Banjo Fittings Type O-RING



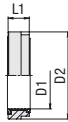
Dimensions mm for Thread		for Tube Size / Series	Ordering Codes	
			NBR (Buna-N®)	FKM (Viton®)
G 1/8		4LL / 6LL / 8LL / 6L	O-RING-8.5x1.5-B90	O-RING-8.5x1.5-V90
G 1/4		8L / 10L / 12L / 6S / 8S	O-RING-11x2-B90	O-RING-11x2-V90
G 3/8		12L / 10S / 12S	O-RING-14.5x2-B90	O-RING-14.5x2-V90
G 1/2		15L / 18L / 14S / 16S	O-RING-19.5x2-B90	O-RING-19.5x2-V90
G 3/4		22L / 20S	O-RING-26x1.5-B90	O-RING-26x1.5-V90
G 1		28L / 25S	O-RING-31x2-B90	O-RING-31x2-V90
G 1 1/4		35L / 30S	O-RING-40x2-B90	O-RING-40x2-V90
G 1 1/2		42L / 38S	O-RING-46x2-B90	O-RING-46x2-V90
M 8 x 1		4LL	O-RING-6.5x1.5-B90	O-RING-6.5x1.5-V90
M 10 x 1		6LL / 8LL / 6L	O-RING-8.5x1.5-B90	O-RING-8.5x1.5-V90
M 12 x 1,5		8L / 6S	O-RING-11x2-B90	O-RING-11x2-V90
M 14 x 1,5		10L / 8S / 12L	O-RING-11x2-B90	O-RING-11x2-V90
M 16 x 1,5		12L / 10S	O-RING-14.5x2-B90	O-RING-14.5x2-V90
M 18 x 1,5		12L / 10S	O-RING-14.5x2-B90	O-RING-14.5x2-V90
M 18 x 1,5		15L / 12S	O-RING-16.5x2-B90	O-RING-16.5x2-V90
M 20 x 1,5		14S	O-RING-19.5x2-B90	O-RING-19.5x2-V90
M 22 x 1,5		18L / 16S	O-RING-19.5x2-B90	O-RING-19.5x2-V90
M 26 x 1,5		22L	O-RING-26x1.5-B90	O-RING-26x1.5-V90
M 27 x 2		20S	O-RING-26x1.5-B90	O-RING-26x1.5-V90
M 33 x 2		28L / 25S	O-RING-31x2-B90	O-RING-31x2-V90
M 42 x 2		35L / 30S	O-RING-40x2-B90	O-RING-40x2-V90
M 48 x 2		42L / 38S	O-RING-46x2-B90	O-RING-46x2-V90

## External Metallic Sealing Ring for Male Studs of Banjo Fittings Type FI-DKR



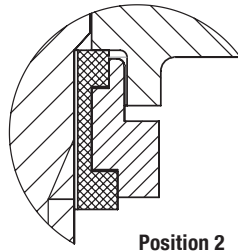
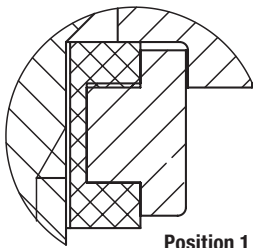
Dimensions mm					Ordering Codes
for Thread		D1	D2	L1	
M 8 x 1		8,05	10,8	4	FI-DKR-M8x1-W3-WOB
M 10 x 1	G 1/8	10,1	13	4	FI-DKR-M10x1-R1/8-W3-WOB
M 12 x 1,5		12,2	17,8	4	FI-DKR-M12x1.5-W3-WOB
	G 1/4	13,2	17,7	4	FI-DKR-R1/4-W3-WOB
M 14 x 1,5		14,1	17,7	4,4	FI-DKR-M14x1.5-W3-WOB
M 16 x 1,5		16,1	21,5	5	FI-DKR-M16x1.5-W3-WOB
	G 3/8	16,7	22	5	FI-DKR-R3/8-W3-WOB
M 18 x 1,5		18,1	23	5	FI-DKR-M18x1.5-W3-WOB
	G 1/2	21	26	7	FI-DKR-18L/16S-R1/2-W3-WOB
M 20 x 1,5	G 1/2	21	26	5	FI-DKR-15L/14S-M20x1.5-R1/2-W3-WOB
M 22 x 1,5		22,1	27	7	FI-DKR-M22x1.5-W3-WOB
M 26 x 1,5		26,1	31,5	5,5	FI-DKR-M26x1.5-W3-WOB
M 27 x 2	G 3/4	27,1	32	5,5	FI-DKR-M27x2-R3/4-W3-WOB
M 33 x 2	G 1	33,3	39	5,5	FI-DKR-M33x2-R1-W3-WOB
M 42 x 2	G 1 1/4	42,1	49	5,5	FI-DKR-M42x2-R1-1/4-W3-WOB
M 48 x 2	G 1 1/2	48,1	55	5,5	FI-DKR-M48x2-R1-1/2-W3-WOB

## Retaining Ring with Captive Seal for Male Studs of Banjo Fittings Type FI-DIR

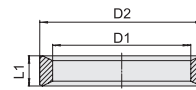


Dimensions mm						Ordering Codes
for Thread		Positioning	D1	D2	L1	
M 10 x 1	G 1/8	2	10,2	14,9	4,0	FI-DIR-M10x1-R1/8-B-W3
M 12 x 1,5		1	12,2	17,8	4,0	FI-DIR-M12x1.5-B-W3
	G 1/4	2	13,3	18,8	4,0	FI-DIR-R1/4-B-W3
M 14 x 1,5		2	14,1	19,9	4,0	FI-DIR-M14x1.5-B-W3
M 16 x 1,5	G 3/8	1	16,8	22,8	4,4	FI-DIR-M16x1.5-R3/8-B-W3/2
M 18 x 1,5		1	18,1	24,9	5,0	FI-DIR-M18x1.5-B-W3/2
M 18 x 1,5 (nur 12L)		1	18,1	24,5	4,6	FI-DIR-12LM18x1.5-B-W3
	G 1/2 (nur 15L / 14S)	1	21	27,9	5,0	FI-DIR-15L/14S-R1/2-B-W3/2
	G 1/2 (nur 18L / 16S)	1	21	27,9	7,0	FI-DIR-18L/16S-R1/2-B-W3/3
M 20 x 1,5		1	20,2	27,5	5,0	FI-DIR-M20x1.5-B-W3
M 22 x 1,5		1	22,1	27,9	7,0	FI-DIR-M22x1.5-B-W3
M 26 x 1,5		1	26,1	32,5	5,5	FI-DIR-M26x1.5-B-W3
M 27 x 2	G 3/4	1	27	32,9	5,5	FI-DIR-M27X2-R3/4-B-W3/2
M 33 x 2	G 1	1	33,4	40,9	5,5	FI-DIR-M33X2-R1-B-W3/2
M 42 x 2	G 1 1/4	1	42,1	50,9	5,5	FI-DIR-M42x2-R1-1/4-B-W3
M 48 x 2	G 1 1/2	1	47,8	55,9	5,5	FI-DIR-M48x2-R1-1/2-B-W3

### Positioning and Orientation (also see page 326)

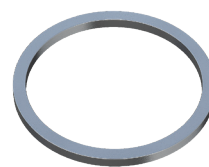
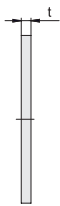
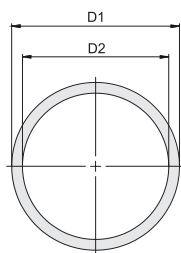


## Internal Metallic Sealing Ring for Female Studs of Gauge Fittings Type FI-DKI



Dimensions mm for Thread	D1	D2	L1	Ordering Codes
G 1/4	6	11,3	4,5	FI-DKI-R1/4-W3-WOB
G 1/2	12	18,5	5	FI-DKI-R1/2-W3-WOB

## Retaining Ring (Small) for Male Studs of Fittings with Lock Nut Type FI-KR



Dimensions mm for Thread	D1	D2	t	Ordering Codes
G 1/8	14,8	11,8	1,4	FI-KR-R1/8-W3-WOB
G 1/4	19,8	16,15	1,9	FI-KR-R1/4-W3-WOB
G 3/8	22,8	19,4	1,9	FI-KR-R3/8-W3-WOB
G 1/2	27,8	23,2	1,9	FI-KR-R1/2-W3-WOB
G 3/4	32,8	28,6	1,9	FI-KR-R3/4-W3-WOB
G 1	40,8	36,6	2,6	FI-KR-R1-W3-WOB
G 1 1/4	50,8	44,9	2,6	FI-KR-R1-1/4-W3-WOB
G 1 1/2	55,8	50,9	2,6	FI-KR-R1-1/2-W3-WOB
M 10 x 1	14,8	11,4	1,1	FI-KR-M10x1-W3-WOB
M 12 x 1,5	17,8	13,9	1,7	FI-KR-M12x1.5-W3-WOB
M 14 x 1,5	19,8	15,9	1,7	FI-KR-M14x1.5-W3-WOB
M 16 x 1,5	22,8	17,9	1,7	FI-KR-M16x1.5-W3-WOB
M 18 x 1,5	24,8	19,9	1,7	FI-KR-M18x1.5-W3-WOB
M 22 x 1,5	27,8	23,9	1,7	FI-KR-M22x1.5-W3-WOB
M 27 x 2	32,8	29,6	2,2	FI-KR-M27x2-W3-WOB
M 33 x 2	40,8	35,6	2,2	FI-KR-M33x2-W3-WOB
M 42 x 2	50,8	44,6	2,2	FI-KR-M42x2-W3-WOB
M 48 x 2	55,8	50,6	2,2	FI-KR-M48x2-W3-WOB
7/16-20 UNF	17	13	1,3	FI-KR-7/16U-W3-WOB
9/16-18 UNF	21	16,1	1,4	FI-KR-9/16U-W3-WOB
3/4-16 UNF	26,5	21	1,6	FI-KR-3/4U-W3-WOB
7/8-14 UNF	30	24,3	1,8	FI-KR-7/8U-W3-WOB
1 1/16-12 UN	37,5	29,6	2,2	FI-KR-1-1/16U-W3-WOB
1 5/16-12 UN	45	35,8	2,2	FI-KR-1-5/16U-W3-WOB
1 5/8-12 UN	56,5	43,7	2,2	FI-KR-1-5/8U-W3-WOB
1 7/8-12 UN	64	49,9	2,2	FI-KR-1-7/8U-W3-WOB