



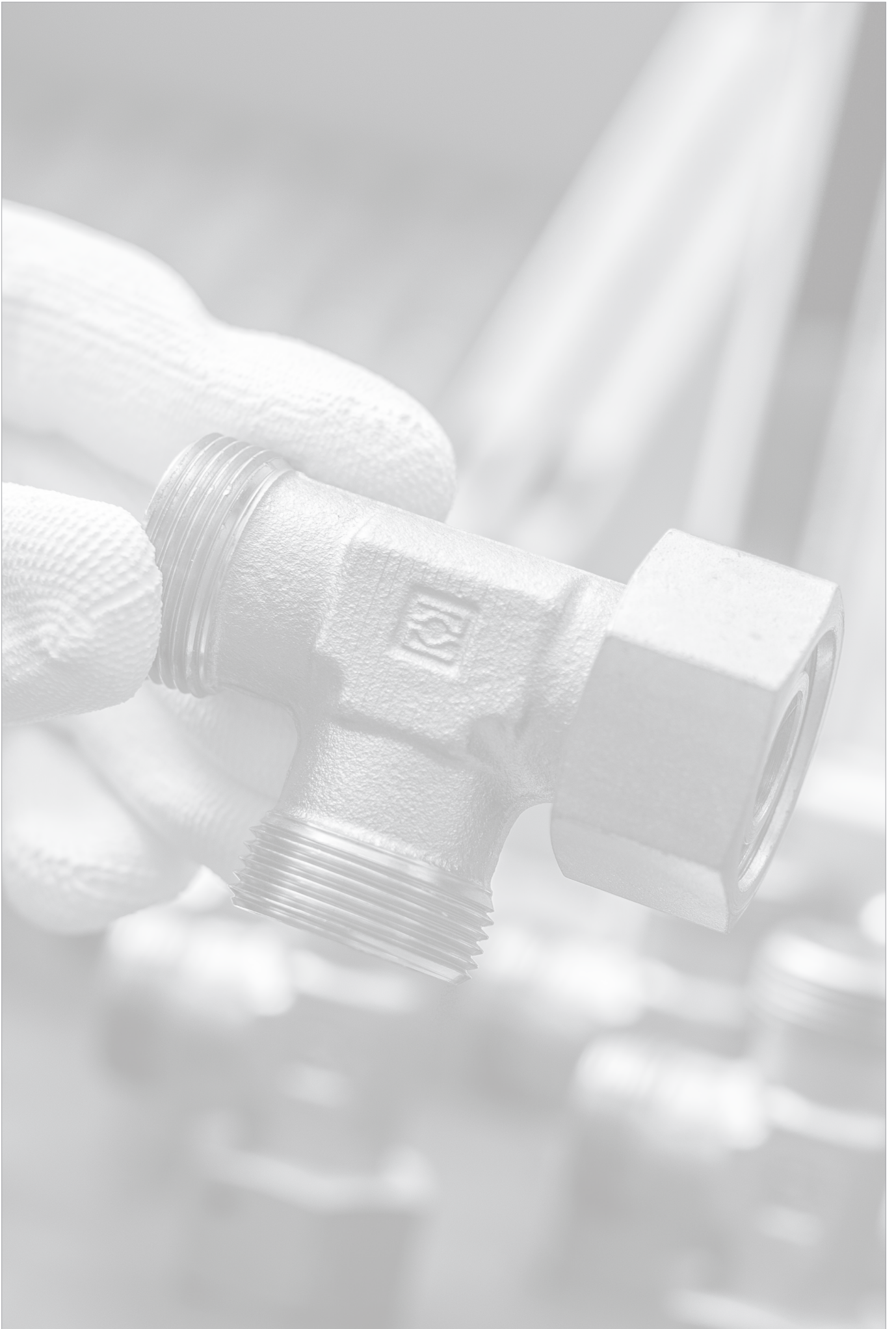
# STAUFF Connect










Metric tube connectors, assembly tools  
and accessories

---

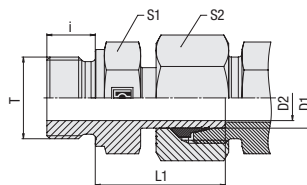
Product Catalogue

Version  
10/2025



	<b>Straight Male Stud Standpipe Fitting</b>	156-161
	FI-EGE	
	<b>Whitworth Parallel Pipe Thread (BSPP) / Metallic Sealing Edge</b>	156
	FI-EGE-...-R	
	<b>Metric Parallel Thread / Metallic Sealing Edge</b>	157
	FI-EGE-...-M	
	<b>Whitworth Parallel Pipe Thread (BSPP) / Profile Sealing Ring</b>	158
	FI-EGE-...-R-WD	
	<b>Metric Parallel Thread / Profile Sealing Ring</b>	160
	FI-EGE-...-M-WD	
	<b>NPT Thread</b>	161
	FI-EGE-...-N	
	<b>Straight Standpipe Reducer</b>	162
	FI-REDS	
	<b>Adjustable Standpipe Elbow</b>	166
	FI-EW	
	<b>Adjustable Standpipe Branch Tee</b>	167
	FI-ET	
	<b>Adjustable Standpipe Barrel Tee</b>	168
	FI-EL	

**Straight Male Stud Standpipe Fitting**  
**Type FI-EGE-...-R • Series L / S**



**Ordering Codes**

**\*FI-EGE\*-10\*L\*R\*-W3\*-SV**

- \* Straight Male Stud Standpipe Fitting **FI-EGE**
- \* Outside Tube Diameter D1 (in mm) **-10**
- \* Series **L**  
**S**
- \* Thread Type **R**  
**R**
- If required, please indicate special sizes, e.g. R1/8!
- \* Material Code **-W3**  
**-W3**
- Please contact STAUFF for alternative materials and surface finishings.
- \* Assembling / Kitting **-SV**  
**-SV**

**Whitworth Parallel Pipe Thread (BSPP)**

**Metallic Sealing Edge**

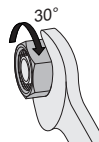
Series	Tube OD mm D1	PN (PB) bar	Dimensions mm						Torque N-m Thread T	Weight kg ca. per 100 <sup>1</sup>	Ordering Codes <sup>2</sup>
			Thread T	D2	i	L1	S1	S2			
L	6	PN400	G 1/8	3,5	8	24,5	14	14	25	2,50	FI-EGE-06LR-W3-SV
	8	PN400	G 1/4	4,5	12	29,5	19	17	55	5,53	FI-EGE-08LR-W3-SV
	10	PN400	G 1/4	7	12	27,5	19	19	55	5,11	FI-EGE-10LR-W3-SV
	12	PN400	G 3/8	7,5	12	34	22	22	95	8,25	FI-EGE-12LR-W3-SV
	15	PN400	G 1/2	11	14	32	27	27	185	13,02	FI-EGE-15LR-W3-SV
	18	PN400	G 1/2	14	14	31,5	27	32	185	13,86	FI-EGE-18LR-W3-SV
	22	PN250	G 3/4	18	16	32,5	32	36	250	19,98	FI-EGE-22LR-W3-SV
	28	PN250	G 1	23	18	35	41	41	400	27,39	FI-EGE-28LR-W3-SV
	35	PN250	G 1 1/4	29,5	20	42,5	50	50	670	47,03	FI-EGE-35LR-W3-SV
	42	PN250	G 1 1/2	35,5	22	46,5	55	60	800	72,00	FI-EGE-42LR-W3-SV
S	6	PB630	G 1/4	3,5	12	27	19	17	80	4,98	FI-EGE-06SR-W3-SV
	8	PB630	G 1/4	4,5	12	29,5	19	19	80	5,98	FI-EGE-08SR-W3-SV
	10	PB630	G 3/8	6,5	12	32	22	22	130	8,81	FI-EGE-10SR-W3-SV
	12	PB630	G 3/8	7,5	12	34	22	24	130	10,01	FI-EGE-12SR-W3-SV
	14	PB630	G 1/2	9,5	14	36,5	27	27	220	13,95	FI-EGE-14SR-W3-SV
	16	PB400	G 1/2	11,5	14	37	27	30	220	16,94	FI-EGE-16SR-W3-SV
	20	PB400	G 3/4	15,5	16	43	32	36	350	26,98	FI-EGE-20SR-W3-SV
	25	PB400	G 1	18	18	48	41	46	700	49,03	FI-EGE-25SR-W3-SV
	30	PB400	G 1 1/4	23,5	20	51	50	50	850	69,13	FI-EGE-30SR-W3-SV
	38	PB250	G 1 1/2	29	22	60	55	60	1000	98,20	FI-EGE-38SR-W3-SV

<sup>1</sup>Weight including cutting ring and union nut on the standpipe.

<sup>2</sup>Standard scope of delivery: Fitting body assembled with cutting ring and union nut on the standpipe.

Please note: Standpipes are always factory-assembled with cutting rings and union nuts.

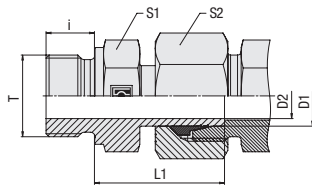
The union nut assembled on the standpipe has to be tightened by only 1/12 a turn (equivalent to 30°) beyond the fixed point.



Male stud acc. to DIN 3852-2 (Form B) / ISO 1179-4 (Type B)  
 Port acc. to DIN 3852-2 (Form X) / ISO 1179-1

Torque recommendations for Steel mating material.

Male threaded studs were designed for female threaded ports in components made of steel. For applications with components made of softer mating materials (e.g. Aluminium), the use of connectors with additionally rolled male threads is recommended. Please contact STAUFF prior to the assembly for further information.

**Straight Male Stud Standpipe Fitting  
Type FI-EGE-...-M • Series L / S**

**Metallic Sealing Edge**
**Metric Parallel Thread**

Series	Tube OD mm	PN (PB) bar	Dimensions mm						Torque N·m	Weight kg ca. per 100 <sup>1</sup>	Ordering Codes <sup>2</sup>
			Thread	T	D2	i	L1	S1			
L	6	PN315	M 10 x 1	3,5	8	24,5	14	14	950	2,54	FI-EGE-06LM-W3-SV
	8	PN315	M 12 x 1,5	5,5	12	26,5	17	17	35	4,34	FI-EGE-08LM-W3-SV
	10	PN315	M 14 x 1,5	7	12	27,5	19	19	55	5,29	FI-EGE-10LM-W3-SV
	12	PN315	M 16 x 1,5	9	12	30,5	22	22	80	7,95	FI-EGE-12LM-W3-SV
	15	PN315	M 18 x 1,5	11	12	31,5	24	27	100	10,25	FI-EGE-15LM-W3-SV
	18	PN315	M 22 x 1,5	14	14	31,5	27	32	170	14,82	FI-EGE-18LM-W3-SV
	22	PN160	M 26 x 1,5	18	16	32,5	32	36	230	19,57	FI-EGE-22LM-W3-SV
	28	PN160	M 33 x 2	23	18	35	41	41	400	28,94	FI-EGE-28LM-W3-SV
	35	PN160	M 42 x 2	29,5	20	42,5	50	50	700	47,56	FI-EGE-35LM-W3-SV
	42	PN160	M 48 x 2	35,5	22	46,5	55	60	900	67,00	FI-EGE-42LM-W3-SV
S	6	PB630	M 12 x 1,5	3,5	12	27	17	17	60	4,51	FI-EGE-06SM-W3-SV
	8	PB630	M 14 x 1,5	4,5	12	29,5	19	19	90	6,30	FI-EGE-08SM-W3-SV
	10	PB630	M 16 x 1,5	6,5	12	32	22	22	120	8,79	FI-EGE-10SM-W3-SV
	12	PB630	M 18 x 1,5	7,5	12	34	24	24	190	11,24	FI-EGE-12SM-W3-SV
	14	PB630	M 20 x 1,5	9,5	14	36,5	27	27	280	15,53	FI-EGE-14SM-W3-SV
	16	PB400	M 22 x 1,5	11,5	14	37	27	30	300	17,47	FI-EGE-16SM-W3-SV
	20	PB400	M 27 x 2	15,5	16	43	32	36	420	27,28	FI-EGE-20SM-W3-SV
	25	PB400	M 33 x 2	18	18	48	41	46	600	51,00	FI-EGE-25SM-W3-SV
	30	PB400	M 42 x 2	23,5	20	51	50	50	700	69,54	FI-EGE-30SM-W3-SV
	38	PB315	M 48 x 2	29	22	60	55	60	900	99,38	FI-EGE-38SM-W3-SV

**Ordering Codes**
**\*FI-EGE\*-10\*L\*M\*-W3\*-SV**

- \* Straight Male Stud Standpipe Fitting FI-EGE
- \* Outside Tube Diameter D1 (in mm) -10
- \* Series L  
Light Series  
Heavy Series S
- \* Thread Type M  
Metric Parallel Thread
- If required, please indicate special sizes, e.g. M12x1.5!
- \* Material Code -W3  
Steel, zinc/nickel-plated
- Please contact STAUFF for alternative materials and surface finishings.
- \* Assembling / Kitting -SV  
Fitting body assembled with cutting ring and union nut on the standpipe

<sup>1</sup> Weight including cutting ring and union nut on the standpipe.

<sup>2</sup> Standard scope of delivery: Fitting body assembled with cutting ring and union nut on the standpipe.

Please note: Standpipes are always factory-assembled with cutting rings and union nuts.

The union nut assembled on the standpipe has to be tightened by only 1/12 a turn (equivalent to 30°) beyond the fixed point.



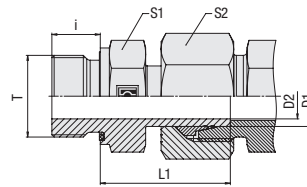
Male stud acc. to DIN 3852-1 (Form B) / ISO 9974-3 (Type B)  
Port acc. to DIN 3852-1 (Form X) / ISO 9974-1

Torque recommendations for Steel mating material.

Male threaded studs were designed for female threaded ports in components made of steel. For applications with components made of softer mating materials (e.g. Aluminium), the use of connectors with additionally rolled male threads is recommended.

Please contact STAUFF prior to the assembly for further information.

**Straight Male Stud Standpipe Fitting**  
**Type FI-EGE-...-R-WD ▪ Series L / S**



**Ordering Codes**

**\*FI-EGE\*-10\*L\*R\*-WD\*-B\*-W3\*-SV**

- \* Straight Male Stud Standpipe Fitting **FI-EGE**
- \* Outside Tube Diameter D1 (in mm) **-10**
- \* Series Light Series (page 158) **L**  
Heavy Series (page 159) **S**
- \* Thread Type Whitworth Parallel Pipe Thread (BSPP) **R**
- If required, please indicate special sizes, e.g. R1/8!
- \* Seal Type Profile Sealing Ring **-WD**
- \* Seal Material NBR (Buna-N®) **-B**  
FKM (Viton®) **-V**
- \* Material Code Steel, zinc/nickel-plated **-W3**
- Please contact STAUFF for alternative materials and surface finishings.
- \* Assembling / Kitting Fitting body assembled with cutting ring and union nut on the standpipe **-SV**

**Spare Parts / Accessories**



Profile Sealing Ring  
 Type **WDG**

Page 238

**Whitworth Parallel Pipe Thread (BSPP)**

**Profile Sealing Ring**

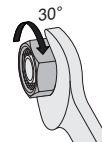
Series	Tube OD mm D1	PN bar	Dimensions mm						Torque N-m Thread T	Weight kg ca. per 100 <sup>1</sup>	Ordering Codes <sup>2</sup>
			Thread T	D2	i	L1	S1	S2			
L	6	315	G 1/8	3,5	8	24,5	14	14	18	2,29	FI-EGE-06LR-WD-B-W3-SV
	8	315	G 1/4	4,5	12	29,5	19	17	35	4,43	FI-EGE-08LR-WD-B-W3-SV
	10	315	G 1/4	7	12	27,5	19	19	35	5,04	FI-EGE-10LR-WD-B-W3-SV
	10	315	G 3/8	6	12	27,5	22	19	70	5,91	FI-EGE-10LR3/8-WD-B-W3-SV
	10	315	G 1/2	6	14	34,5	27	19	90	10,04	FI-EGE-10LR1/2-WD-B-W3-SV
	12	315	G 1/4	7	12	27,5	19	22	35	6,07	FI-EGE-12LR1/4-WD-B-W3-SV
	12	315	G 3/8	7,5	12	34	22	22	70	9,23	FI-EGE-12LR3/8-WD-B-W3-SV
	12	315	G 1/2	7	14	34,5	27	22	90	12,86	FI-EGE-12LR1/2-WD-B-W3-SV
	15	315	G 3/8	10	12	31	22	27	70	9,72	FI-EGE-15LR3/8-WD-B-W3-SV
	15	315	G 1/2	11	14	32	27	27	90	13,01	FI-EGE-15LR-WD-B-W3-SV
	18	315	G 1/2	14	14	31,5	27	32	90	13,89	FI-EGE-18LR-WD-B-W3-SV
	18	315	G 3/4	13	16	31,5	32	32	180	18,26	FI-EGE-18LR3/4-WD-B-W3-SV
	22	160	G 3/4	18	16	32,5	32	36	180	19,63	FI-EGE-22LR-WD-B-W3-SV
	28	160	G 1	23	18	35	41	41	310	28,64	FI-EGE-28LR-WD-B-W3-SV
	35	160	G 1 1/4	29,5	20	42,5	50	50	450	46,03	FI-EGE-35LR-WD-B-W3-SV
	42	160	G 1 1/2	35,5	22	46,5	55	60	540	69,40	FI-EGE-42LR-WD-B-W3-SV

<sup>1</sup> Weight including cutting ring and union nut on the standpipe.

<sup>2</sup> Standard scope of delivery: Fitting body assembled with cutting ring and union nut on the standpipe.

Please note: Standpipes are always factory-assembled with cutting rings and union nuts.

The union nut assembled on the standpipe has to be tightened by only 1/12 a turn (equivalent to 30°) beyond the fixed point.

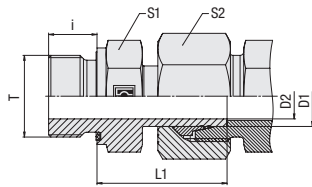


Male stud acc. to ISO 1179-2 (Type E)  
 Port acc. to ISO 1179-1

Torque recommendations for Steel mating material.

Male threaded studs were designed for female threaded ports in components made of steel. For applications with components made of softer mating materials (e.g. Aluminium), the use of connectors with additionally rolled male threads is recommended.

Please contact STAUFF prior to the assembly for further information.

**Straight Male Stud Standpipe Fitting  
Type FI-EGE-...-R-WD • Series L / S**

**Whitworth Parallel Pipe Thread (BSPP)**
**Profile Sealing Ring**

Series	Tube OD mm	PN bar	Dimensions mm						Torque N-m	Weight kg ca. per 100 <sup>1</sup>	Ordering Codes <sup>2</sup>
			Thread T	D2	i	L1	S1	S2			
S	6	630	G 1/4	3,5	12	27	19	17	55	4,95	FI-EGE-06SR-WD-B-W3-SV
	8	630	G 1/4	4,5	12	29,5	19	19	55	5,95	FI-EGE-08SR-WD-B-W3-SV
	10	630	G 1/4	6	12	31,5	19	22	55	7,32	FI-EGE-10SR1/4-WD-B-W3-SV
	10	630	G 3/8	6,5	12	32	22	22	80	8,71	FI-EGE-10SR-WD-B-W3-SV
	12	630	G 1/4	5	12	34	19	24	55	8,98	FI-EGE-12SR1/4-WD-B-W3-SV
	12	630	G 3/8	7,5	12	34	22	24	80	10,02	FI-EGE-12SR-WD-B-W3-SV
	12	630	G 1/2	7,3	14	34,5	27	24	115	13,45	FI-EGE-12SR1/2-WD-B-W3-SV
	14	630	G 1/2	9,5	14	36,5	27	27	115	15,40	FI-EGE-14SR-WD-B-W3-SV
	16	630	G 3/8	10,5	12	37	22	30	80	13,46	FI-EGE-16SR3/8-WD-B-W3-SV
	16	400	G 1/2	11,5	14	37	27	30	115	16,88	FI-EGE-16SR-WD-B-W3-SV
	16	400	G 3/4	11,5	16	39	32	30	180	23,32	FI-EGE-16SR3/4-WD-B-W3-SV
	20	400	G 1/2	12	14	43	27	36	115	23,01	FI-EGE-20SR1/2-WD-B-W3-SV
	20	400	G 3/4	15,5	16	43	32	36	180	26,88	FI-EGE-20SR-WD-B-W3-SV
	25	400	G 1	18	18	48	41	46	310	48,81	FI-EGE-25SR-WD-B-W3-SV
	30	400	G 1 1/4	23,5	20	51	50	50	450	62,10	FI-EGE-30SR-WD-B-W3-SV
	38	315	G 1 1/2	29	22	60	55	60	540	97,70	FI-EGE-38SR-WD-B-W3-SV

<sup>1</sup> Weight including cutting ring and union nut on the standpipe.

<sup>2</sup> Standard scope of delivery: Fitting body assembled with cutting ring and union nut on the standpipe.

Please note: Standpipes are always factory-assembled with cutting rings and union nuts.

The union nut assembled on the standpipe has to be tightened by only 1/12 a turn (equivalent to 30°) beyond the fixed point.



Male stud acc. to ISO 1179-2 (Type E)  
Port acc. to ISO 1179-1

Torque recommendations for Steel mating material.

Male threaded studs were designed for female threaded ports in components made of steel. For applications with components made of softer mating materials (e.g. Aluminium), the use of connectors with additionally rolled male threads is recommended.

Please contact STAUFF prior to the assembly for further information.

**Ordering Codes**
**\*FI-EGE\*-10\*L\*R\*-WD\*-B\*-W3\*-SV**

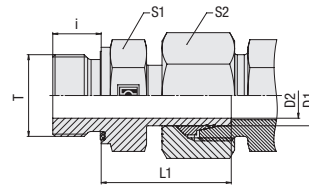
* Straight Male Stud Standpipe Fitting	FI-EGE
* Outside Tube Diameter D1 (in mm)	-10
* Series	Light Series (page 158) <b>L</b> Heavy Series (page 159) <b>S</b>
* Thread Type	Whitworth Parallel Pipe Thread (BSPP) <b>R</b>
If required, please indicate special sizes, e.g. R1/8!	
* Seal Type	Profile Sealing Ring <b>-WD</b>
* Seal Material	NBR (Buna-N®) <b>-B</b> FKM (Viton®) <b>-V</b>
* Material Code	Steel, zinc/nickel-plated <b>-W3</b>
Please contact STAUFF for alternative materials and surface finishings.	
* Assembling / Kitting	Fitting body assembled with cutting ring and union nut on the standpipe <b>-SV</b>

**Spare Parts / Accessories**


Profile Sealing Ring  
Type **WDG**

Page 238

**Straight Male Stud Standpipe Fitting**  
**Type FI-EGE-...-M-WD • Series L / S**



**Ordering Codes**

**\*FI-EGE\*-10\*L\*M\*-WD\*-B\*-W3\*-SV**

- \* Straight Male Stud Standpipe Fitting **FI-EGE**
- \* Outside Tube Diameter D1 (in mm) **-10**
- \* Series **L**  
 Light Series  
**S**  
 Heavy Series
- \* Thread Type **M**  
 Metric Parallel Thread
- If required, please indicate special sizes, e.g. M12x1.5!
- \* Seal Type **-WD**  
 Profile Sealing Ring
- \* Seal Material **-B**  
 NBR (Buna-N®)  
**-V**  
 FKM (Viton®)
- \* Material Code **-W3**  
 Steel, zinc/nickel-plated
- Please contact STAUFF for alternative materials and surface finishings.
- \* Assembling / Kitting **-SV**  
 Fitting body assembled with cutting ring and union nut on the standpipe

**Spare Parts / Accessories**



Profile Sealing Ring  
 Type **WDG**

Page 238

**Profile Sealing Ring**

**Metric Parallel Thread**

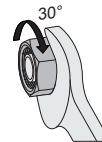
Series	Tube OD mm D1	PN bar	Dimensions mm						Torque N-m Thread T	Weight kg ca. per 100 <sup>1</sup>	Ordering Codes <sup>2</sup>	
			Thread T	D2	i	L1	S1	S2				
L	6	500	M 10 x 1	3,5	8	24,5	14	14	18	2,30	FI-EGE-06LM-WD-B-W3-SV	
	8	500	M 12 x 1,5	5,5	12	26,5	17	17	25	3,90	FI-EGE-08LM-WD-B-W3-SV	
	10	500	M 14 x 1,5	7	12	27,5	19	19	45	4,99	FI-EGE-10LM-WD-B-W3-SV	
	12	400	M 16 x 1,5	9	12	30,5	22	22	55	7,18	FI-EGE-12LM-WD-B-W3-SV	
	15	400	M 18 x 1,5	11	12	31,5	24	27	70	10,25	FI-EGE-15LM-WD-B-W3-SV	
	18	400	M 22 x 1,5	14	14	31,5	27	32	125	13,62	FI-EGE-18LM-WD-B-W3-SV	
	22	250	M 26 x 1,5	18	16	32,5	32	36	180	10,60	FI-EGE-22LM-WD-B-W3-SV	
	28	250	M 33 x 2	23	18	35	41	41	310	30,26	FI-EGE-28LM-WD-B-W3-SV	
	35	250	M 42 x 2	29,5	20	42,5	50	50	450	47,17	FI-EGE-35LM-WD-B-W3-SV	
	42	250	M 48 x 2	35,5	22	46,5	55	60	540	77,85	FI-EGE-42LM-WD-B-W3-SV	
	S	6	800	M 12 x 1,5	3,5	12	27	17	17	35	4,34	FI-EGE-06SM-WD-B-W3-SV
		8	800	M 14 x 1,5	4,5	12	29,5	19	19	55	5,90	FI-EGE-08SM-WD-B-W3-SV
10		800	M 16 x 1,5	6,5	12	32	22	22	70	8,20	FI-EGE-10SM-WD-B-W3-SV	
12		630	M 18 x 1,5	7,5	12	34	24	24	90	10,97	FI-EGE-12SM-WD-B-W3-SV	
14		630	M 20 x 1,5	9,5	14	36,5	27	27	125	15,57	FI-EGE-14SM-WD-B-W3-SV	
16		630	M 22 x 1,5	11,5	14	37	27	30	135	16,20	FI-EGE-16SM-WD-B-W3-SV	
20		400	M 27 x 2	15,5	16	43	32	36	180	27,06	FI-EGE-20SM-WD-B-W3-SV	
25		400	M 33 x 2	18	18	48	41	46	310	48,60	FI-EGE-25SM-WD-B-W3-SV	
30		400	M 42 x 2	23,5	20	51	50	50	450	69,15	FI-EGE-30SM-WD-B-W3-SV	
38		420	M 48 x 2	29	22	60	55	60	540	110,29	FI-EGE-38SM-WD-B-W3-SV	

<sup>1</sup> Weight including cutting ring and union nut on the standpipe.

<sup>2</sup> Standard scope of delivery: Fitting body assembled with cutting ring and union nut on the standpipe.

Please note: Standpipes are always factory-assembled with cutting rings and union nuts.

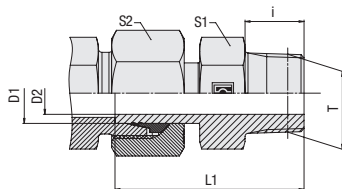
The union nut assembled on the standpipe has to be tightened by only 1/12 a turn (equivalent to 30°) beyond the fixed point.



Male stud acc. to ISO 9974-2 (Type E)  
 Port acc. to ISO 9974-1

Torque recommendations for Steel mating material.

Male threaded studs were designed for female threaded ports in components made of steel. For applications with components made of softer mating materials (e.g. Aluminium), the use of connectors with additionally rolled male threads is recommended. Please contact STAUFF prior to the assembly for further information.

**Straight Male Stud Standpipe Fitting  
Type FI-EGE-...-N ▪ Series L / S**

**NPT Thread**

Series	Tube OD mm D1	PN bar	Dimensions mm						Weight kg ca. per 100 <sup>1</sup>	Ordering Codes <sup>2</sup>
			Thread T	D2	i	L1	S1	S2		
L	6	315	1/8 NPT	3,3	10	33	11	14	2,27	FI-EGE-06L1/8N-W3-SV
	8	315	1/4 NPT	4	15,5	40	14	17	3,93	FI-EGE-08L1/4N-W3-SV
	10	315	1/4 NPT	6,5	15,5	41	14	19	4,46	FI-EGE-10L1/4N-W3-SV
	12	315	3/8 NPT	7	15,5	42	19	22	6,80	FI-EGE-12L3/8N-W3-SV
	15	315	1/2 NPT	10	20	46,5	22	27	10,48	FI-EGE-15L1/2N-W3-SV
	18	315	1/2 NPT	13	20	49,5	22	32	13,44	FI-EGE-18L1/2N-W3-SV
	22	160	3/4 NPT	16,5	20	49	27	36	18,41	FI-EGE-22L3/4N-W3-SV
	28	160	1 NPT	22	25	55,5	36	41	25,80	FI-EGE-28L1N-W3-SV
	35	160	1 1/4 NPT	28	25,6	74,1	46	50	42,40	FI-EGE-35L1-1/4N-W3-SV
	42	160	1 1/2 NPT	34	26	78,5	50	60	62,33	FI-EGE-42L1-1/2N-W3-SV
S	6	630	1/4 NPT	3	14	45,1	14	17	1,92	FI-EGE-06S1/4N-W3-SV
	8	630	1/4 NPT	4,3	15,5	40	14	19	4,45	FI-EGE-08S1/4N-W3-SV
	10	630	3/8 NPT	6	15,5	44,5	19	22	7,29	FI-EGE-10S3/8N-W3-SV
	12	630	3/8 NPT	7,3	15,5	46,5	19	24	8,49	FI-EGE-12S3/8N-W3-SV
	14	630	1/2 NPT	9	20	53,5	22	27	12,81	FI-EGE-14S1/2N-W3-SV
	16	630	1/2 NPT	10,5	20	58	22	30	16,52	FI-EGE-16S1/2N-W3-SV
	20	400	3/4 NPT	13,5	20	68	27	36	24,50	FI-EGE-20S3/4N-W3-SV
	25	400	1 NPT	17,5	25	68	36	46	41,13	FI-EGE-25S1N-W3-SV
	30	400	1 1/4 NPT	22	26	70,5	46	50	52,80	FI-EGE-30S1-1/4N-W3-SV
	38	400	1 1/2 NPT	29	26	92	50	60	83,60	FI-EGE-38S1-1/2N-W3-SV

**Ordering Codes**
**\*FI-EGE\*-10\*L\*1/4\*N\*-W3\*-SV**

* Straight Male Stud Standpipe Fitting	FI-EGE
* Outside Tube Diameter D1 (in mm)	-10
* Series	Light Series <b>L</b> Heavy Series <b>S</b>
* Thread Size	acc. to dimension table <b>1/4</b>
Please always indicate thread sizes, e.g. 1/4!	
* Thread Type	NPT Thread <b>N</b>
* Material Code	Steel, zinc/nickel-plated <b>-W3</b>
Please contact STAUFF for alternative materials and surface finishings.	
* Assembling / Kitting	Fitting body assembled with cutting ring and union nut on the standpipe <b>-SV</b>

<sup>1</sup> Weight including cutting ring and union nut on the standpipe.

<sup>2</sup> Standard scope of delivery: Fitting body assembled with cutting ring and union nut on the standpipe.

Please note: Standpipes are always factory-assembled with cutting rings and union nuts.

The union nut assembled on the standpipe has to be tightened by only 1/12 a turn (equivalent to 30°) beyond the fixed point.

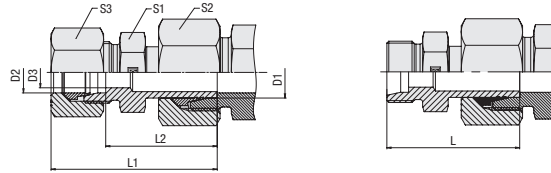
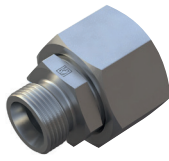


Male stud acc. to ANSI/ASME B1.20.1-1983  
Port acc. to ANSI/ASME B1.20.1-1983

Suitable liquid / plastic sealant required.

Male threaded studs were designed for female threaded ports in components made of steel. For applications with components made of softer mating materials (e.g. Aluminium), the use of connectors with additionally rolled male threads is recommended.  
Please contact STAUFF prior to the assembly for further information.

**Straight Standpipe Reducer**  
Type FI-REDS • Series L



**Ordering Codes**

- \*FI-REDS\*-10/\*08\*L\*-W3\*-MS+SV**
- \* Straight Standpipe Reducer** **FI-REDS**
- \* Outside Tube Diameter D1 (in mm)** **-10**
- \* Outside Tube Diameter D2 (in mm)** **08**
- \* Series** **L**  
Light Series (pages 162/163)  
Heavy Series (pages 164/165) **S**
- \* Material Code** **-W3**  
Steel, zinc/nickel-plated
- Please contact STAUFF for alternative materials and surface finishings.
- \* Assembling / Kitting** **-SV**  
Fitting body assembled with cutting ring and union nut on the standpipe
- MS+SV**  
Fitting body assembled with cutting rings and union nuts on all ends

Series	Tube OD		PN bar	Dimensions							Weight kg ca. per 100	Ordering Codes <sup>3</sup>
	mm D1	mm D2		mm D3	L	L1 <sup>1</sup>	L2	S1	S2	S3		
L / LL	6	4	100	3	32,5	38,5	28,5	10	14	10	1,96	FI-REDS-06L/04LL-W3-SV
L	8	6	500	4	33	40,5	27,5	12	17	14	3,15	FI-REDS-08/06L-W3-SV
	10	6	500	4	34	41,5	28,5	12	19	14	4,00	FI-REDS-10/06L-W3-SV
	10	8	500	6	35	42,5	28,5	14	19	17	3,97	FI-REDS-10/08L-W3-SV
	12	6	400	4	37	44,5	28	14	22	14	4,75	FI-REDS-12/06L-W3-SV
	12	8	400	6	36	44,5	29	14	22	17	5,35	FI-REDS-12/08L-W3-SV
	12	10	400	8	37	45,5	30	17	22	19	5,48	FI-REDS-12/10L-W3-SV
	15	6	400	4	38	46	28	17	27	14	7,53	FI-REDS-15/06L-W3-SV
	15	8	400	6	38	46	29	17	27	17	7,73	FI-REDS-15/08L-W3-SV
	15	10	400	8	37	47	30	17	27	19	8,24	FI-REDS-15/10L-W3-SV
	15	12	400	10	38	48	31	19	27	22	8,27	FI-REDS-15/12L-W3-SV
	18	6	400	4	37,5	45,5	30	19	32	14	10,36	FI-REDS-18/06L-W3-SV
	18	8	400	6	37,5	45,5	31	19	32	17	10,84	FI-REDS-18/08L-W3-SV
	18	10	400	8	39	46,5	32	19	32	19	10,98	FI-REDS-18/10L-W3-SV
	18	12	400	10	40,5	46,5	33,5	19	32	22	12,01	FI-REDS-18/12L-W3-SV
	18	15	400	12	41	47,5	34	24	32	27	12,76	FI-REDS-18/15L-W3-SV
	22	6	250	4	39,5	47	32	24	36	14	13,75	FI-REDS-22/06L-W3-SV
	22	8	250	6	43	46,5	34	24	36	17	19,87	FI-REDS-22/08L-W3-SV
	22	10	250	8	41	47,5	34	24	36	19	15,17	FI-REDS-22/10L-W3-SV
	22	12	250	10	39,5	47,5	34,5	24	36	22	15,45	FI-REDS-22/12L-W3-SV
	22	15	250	12	40,5	48,5	36	24	36	27	16,02	FI-REDS-22/15L-W3-SV
22	18	250	15	44	50,5	36,5	27	36	32	17,93	FI-REDS-22/18L-W3-SV	

**Connecting Parts**

-  Cutting Ring  
Type **FI-DS** Page 28
-  Soft-Sealing Cutting Ring  
Type **FI-WDDS** Page 29
-  Support Sleeve  
Type **FI-VH** Page 31
-  STAUFF Form EVO Sealing Ring  
Type **FI-FD** Page 32
-  Union Nut  
Type **FI-M** Page 33
-  37° Flared Tube Fitting Set  
Type **FI-AB** Page 37

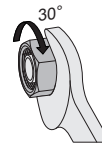
<sup>1</sup> Approximate dimension in assembled condition.

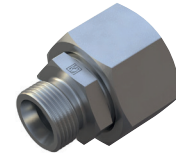
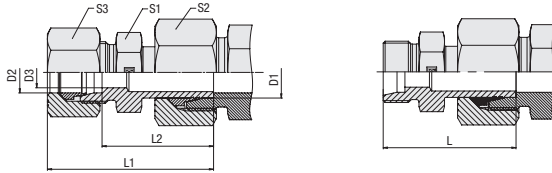
<sup>2</sup> Weight including cutting ring and union nut on the standpipe.

<sup>3</sup> Standard scope of delivery: Fitting body assembled with cutting ring and union nut on the standpipe.

Please note: Standpipes are always factory-assembled with cutting rings and union nuts.

The union nut assembled on the standpipe has to be tightened by only 1/12 a turn (equivalent to 30°) beyond the fixed point.



**Straight Standpipe Reducer  
Type FI-REDS ■ Series L**


Series	Tube OD mm		PN bar	Dimensions mm						Weight kg ca. per 100	Ordering Codes <sup>3</sup>	
	D1	D2		D3	L	L1 <sup>1</sup>	L2	S1	S2			S3
L	28	6	250	4	41	49	34,5	30	41	14	18,12	FI-REDS-28/06L-W3-SV
	28	8	250	6	42	50	34,5	30	41	17	18,24	FI-REDS-28/08L-W3-SV
	28	10	250	8	41	49	35,5	30	41	19	18,45	FI-REDS-28/10L-W3-SV
	28	12	250	10	41	49	35,5	30	41	22	19,79	FI-REDS-28/12L-W3-SV
	28	15	250	12	42	50	36,5	30	41	27	20,30	FI-REDS-28/15L-W3-SV
	28	18	250	15	43,5	52	36	30	41	32	20,48	FI-REDS-28/18L-W3-SV
	28	22	250	19	45,5	54	38	32	41	36	23,25	FI-REDS-28/22L-W3-SV
	35	6	250	4	48	56	40,5	36	50	14	29,53	FI-REDS-35/06L-W3-SV
	35	8	250	6	48	56	40,5	36	50	17	28,78	FI-REDS-35/08L-W3-SV
	35	10	250	8	49	57	41,5	36	50	19	31,70	FI-REDS-35/10L-W3-SV
	35	12	250	10	47	55	41,5	36	50	22	32,26	FI-REDS-35/12L-W3-SV
	35	15	250	12	48,5	56,5	42,5	36	50	27	28,97	FI-REDS-35/15L-W3-SV
	35	18	250	15	49,5	58,5	42	36	50	32	32,20	FI-REDS-35/18L-W3-SV
	35	22	250	19	51,5	60,5	44	36	50	36	32,94	FI-REDS-35/22L-W3-SV
	35	28	250	24	52,5	61,5	44	41	50	41	34,18	FI-REDS-35/28L-W3-SV
	42	10	250	8	51	59	45	46	60	19	45,84	FI-REDS-42/10L-W3-SV
	42	12	250	10	52	60	45	46	60	22	56,37	FI-REDS-42/12L-W3-SV
	42	15	250	12	52	60	46	46	60	27	58,28	FI-REDS-42/15L-W3-SV
	42	18	250	15	53	61	45,5	46	60	32	51,80	FI-REDS-42/18L-W3-SV
	42	22	250	19	54	63	47,5	46	60	36	58,28	FI-REDS-42/22L-W3-SV
42	28	250	24	55	64	47,5	46	60	41	52,40	FI-REDS-42/28L-W3-SV	
42	35	250	30	57	69	46,5	46	60	50	53,30	FI-REDS-42/35L-W3-SV	

<sup>1</sup> Approximate dimension in assembled condition.

<sup>2</sup> Weight including cutting ring and union nut on the standpipe.

<sup>3</sup> Standard scope of delivery: Fitting body assembled with cutting ring and union nut on the standpipe.

Please note: Standpipes are always factory-assembled with cutting rings and union nuts.

The union nut assembled on the standpipe has to be tightened by only 1/12 a turn (equivalent to 30°) beyond the fixed point.


**Ordering Codes**

**\*FI-REDS\*-10/\*08\*L\*-W3\*-MS+SV**

\* Straight Standpipe Reducer **FI-REDS**

\* Outside Tube Diameter D1 (in mm) **-10**

\* Outside Tube Diameter D2 (in mm) **08**

\* Series Light Series (pages 162/163) **L**  
Heavy Series (pages 164/165) **S**

\* Material Code Steel, zinc/nickel-plated **-W3**

Please contact STAUFF for alternative materials and surface finishings.

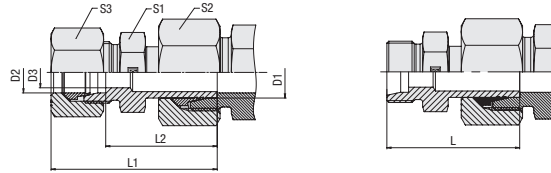
\* Assembling / Kitting Fitting body assembled with cutting ring and union nut on the standpipe **-SV**

Fitting body assembled with cutting rings and union nuts on all ends **-MS+SV**

**Connecting Parts**

	Cutting Ring Type <b>FI-DS</b>	Page 28
	Soft-Sealing Cutting Ring Type <b>FI-WDDS</b>	Page 29
	Support Sleeve Type <b>FI-VH</b>	Page 31
	STAUFF Form EVO Sealing Ring Type <b>FI-FD</b>	Page 32
	Union Nut Type <b>FI-M</b>	Page 33
	37° Flared Tube Fitting Set Type <b>FI-AB</b>	Page 37

## Straight Standpipe Reducer Type FI-REDS • Series S



### Ordering Codes

**\*FI-REDS\*-10/\*08\*S\*-W3\*-MS+SV**

\* Straight Standpipe Reducer **FI-REDS**

\* Outside Tube Diameter D1 (in mm) **-10**

\* Outside Tube Diameter D2 (in mm) **08**

\* Series Light Series (pages 162/163) **L**  
Heavy Series (pages 164/165) **S**

\* Material Code Steel, zinc/nickel-plated **-W3**

Please contact STAUFF for alternative materials and surface finishings.

\* Assembling / Kitting Fitting body assembled with cutting ring and union nut on the standpipe **-SV**

Fitting body assembled with cutting rings and union nuts on all ends **-MS+SV**

Series	Tube OD mm		PN bar	Dimensions mm							Weight kg ca. per 100	Ordering Codes <sup>3</sup>
	D1	D2		D3	L	L1 <sup>1</sup>	L2	S1	S2	S3		
S	8	6	800	4	37	45	30	14	19	17	4,42	FI-REDS-08/06S-W3-SV
	10	6	800	4	39	47	34	14	22	17	6,26	FI-REDS-10/06S-W3-SV
	10	8	800	5	41	49	34	17	22	19	6,81	FI-REDS-10/08S-W3-SV
	12	6	630	4	39	47	36	14	24	17	6,70	FI-REDS-12/06S-W3-SV
	12	8	630	5	41	49	31,5	17	24	19	7,46	FI-REDS-12/08S-W3-SV
	12	10	630	7	41	50	36	19	24	22	7,80	FI-REDS-12/10S-W3-SV
	14	6	630	4	42	50	37	17	27	17	9,61	FI-REDS-14/06S-W3-SV
	14	8	630	5	44	52	37	17	27	19	10,19	FI-REDS-14/08S-W3-SV
	14	10	630	7	44	53	36,5	19	27	22	11,24	FI-REDS-14/10S-W3-SV
	14	12	630	8	44	55	36,5	22	27	24	11,98	FI-REDS-14/12S-W3-SV
	16	6	630	4	45,5	50	38,5	17	30	17	12,14	FI-REDS-16/06S-W3-SV
	16	8	630	5	44	52	38,5	17	30	19	12,29	FI-REDS-16/08S-W3-SV
	16	10	630	7	44	53	38	19	30	22	12,78	FI-REDS-16/10S-W3-SV
	16	12	630	8	46	55	38	22	30	24	14,39	FI-REDS-16/12S-W3-SV
	16	14	630	10	47,5	58	39,5	24	30	27	14,70	FI-REDS-16/14S-W3-SV
	20	6	400	4	47	55	46,5	22	36	17	20,15	FI-REDS-20/06S-W3-SV
	20	8	400	5	48	56	46,5	22	36	19	17,67	FI-REDS-20/08S-W3-SV
	20	10	400	7	53,5	57	46	22	36	22	16,90	FI-REDS-20/10S-W3-SV
	20	12	400	8	50	59	46	22	36	24	18,10	FI-REDS-20/12S-W3-SV
	20	14	400	10	52	62	47,5	24	36	27	19,20	FI-REDS-20/14S-W3-SV
20	16	400	12	55,5	62	47	27	36	30	23,31	FI-REDS-20/16S-W3-SV	

### Connecting Parts

	Cutting Ring Type <b>FI-DS</b>	Page 28
	Soft-Sealing Cutting Ring Type <b>FI-WDDS</b>	Page 29
	Support Sleeve Type <b>FI-VH</b>	Page 31
	STAUFF Form EVO Sealing Ring Type <b>FI-FD</b>	Page 32
	Union Nut Type <b>FI-M</b>	Page 33
	37° Flared Tube Fitting Set Type <b>FI-AB</b>	Page 37

<sup>1</sup> Approximate dimension in assembled condition.

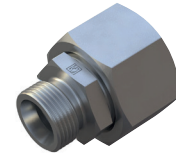
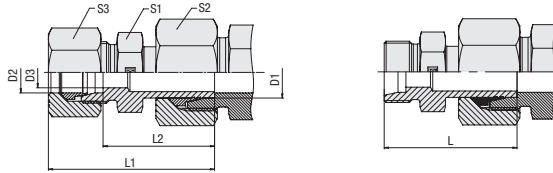
<sup>2</sup> Weight including cutting ring and union nut on the standpipe.

<sup>3</sup> Standard scope of delivery: Fitting body assembled with cutting ring and union nut on the standpipe.

Please note: Standpipes are always factory-assembled with cutting rings and union nuts.

The union nut assembled on the standpipe has to be tightened by only 1/12 a turn (equivalent to 30°) beyond the fixed point.



**Straight Standpipe Reducer  
Type FI-REDS ■ Series S**


Series	Tube OD mm		PN bar	Dimensions mm							Weight kg ca. per 100	Ordering Codes <sup>3</sup>
	D1	D2		D3	L	L1 <sup>1</sup>	L2	S1	S2	S3		
S	25	6	400	4	50	58	51	27	46	17	31,38	FI-REDS-25/06S-W3-SV
	25	8	400	5	51	59	51	27	46	19	31,65	FI-REDS-25/08S-W3-SV
	25	10	400	7	58	60	50,5	27	46	22	35,51	FI-REDS-25/10S-W3-SV
	25	12	400	8	53	62	50,5	27	46	24	38,88	FI-REDS-25/12S-W3-SV
	25	14	400	10	60	65	52	27	46	27	41,86	FI-REDS-25/14S-W3-SV
	25	16	400	12	60	65	51,5	27	46	30	35,70	FI-REDS-25/16S-W3-SV
	25	20	400	16	62	70	51,5	32	46	36	39,99	FI-REDS-25/20S-W3-SV
	30	6	400	4	53	61	52,5	32	50	17	42,88	FI-REDS-30/06S-W3-SV
	30	8	400	5	53	61	52,5	32	50	19	38,19	FI-REDS-30/08S-W3-SV
	30	10	400	7	53	62	52	32	50	22	43,13	FI-REDS-30/10S-W3-SV
	30	12	400	8	59,5	65	52	32	50	24	38,53	FI-REDS-30/12S-W3-SV
	30	14	400	10	61,5	68	53,5	32	50	27	39,19	FI-REDS-30/14S-W3-SV
	30	16	400	12	61,5	68	53	32	50	30	43,00	FI-REDS-30/16S-W3-SV
	30	20	400	16	62	73	53	32	50	36	55,33	FI-REDS-30/20S-W3-SV
	30	25	400	20	66	78	53,5	41	50	46	52,60	FI-REDS-30/25S-W3-SV
	38	6	315	4	60	68	56	41	60	17	64,17	FI-REDS-38/06S-W3-SV
	38	8	315	5	60	68	56	41	60	19	64,88	FI-REDS-38/08S-W3-SV
	38	10	315	7	62	71	55,5	41	60	22	63,89	FI-REDS-38/10S-W3-SV
	38	12	315	8	62	69	55,5	41	60	24	64,80	FI-REDS-38/12S-W3-SV
	38	14	315	10	65	75	57	41	60	27	67,79	FI-REDS-38/14S-W3-SV
38	16	315	12	65	74	56,5	41	60	30	64,60	FI-REDS-38/16S-W3-SV	
38	20	315	16	68	79	56,5	41	60	36	72,99	FI-REDS-38/20S-W3-SV	
38	25	315	20	69	84	57	41	60	46	66,80	FI-REDS-38/25S-W3-SV	
38	30	315	25	74	87	57,5	46	60	50	71,80	FI-REDS-38/30S-W3-SV	

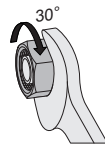
<sup>1</sup> Approximate dimension in assembled condition.

<sup>2</sup> Weight including cutting ring and union nut on the standpipe.

<sup>3</sup> Standard scope of delivery: Fitting body assembled with cutting ring and union nut on the standpipe.

Please note: Standpipes are always factory-assembled with cutting rings and union nuts.

The union nut assembled on the standpipe has to be tightened by only 1/12 a turn (equivalent to 30°) beyond the fixed point.


**Ordering Codes**
**\*FI-REDS\*-10/\*08\*S\*-W3\*-MS+SV**

\* Straight Standpipe Reducer **FI-REDS**

\* Outside Tube Diameter D1 (in mm) **-10**

\* Outside Tube Diameter D2 (in mm) **08**

\* Series Light Series (pages 162/163) **L**  
Heavy Series (pages 164/165) **S**

\* Material Code Steel, zinc/nickel-plated **-W3**

Please contact STAUFF for alternative materials and surface finishings.

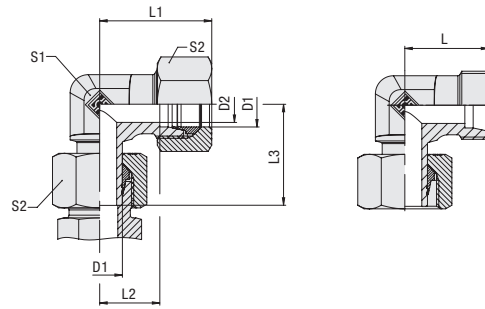
\* Assembling / Kitting Fitting body assembled with cutting ring and union nut on the standpipe **-SV**

Fitting body assembled with cutting rings and union nuts on all ends **-MS+SV**

**Connecting Parts**

	Cutting Ring Type <b>FI-DS</b>	Page 28
	Soft-Sealing Cutting Ring Type <b>FI-WDDS</b>	Page 29
	Support Sleeve Type <b>FI-VH</b>	Page 31
	STAUFF Form EVO Sealing Ring Type <b>FI-FD</b>	Page 32
	Union Nut Type <b>FI-M</b>	Page 33
	37° Flared Tube Fitting Set Type <b>FI-AB</b>	Page 37

## Adjustable Standpipe Elbow Type FI-EW ▪ Series L / S



### Ordering Codes

**\*FI-EW\*-10\*L\*-W3\*-MS+SV**

- \* Adjustable Standpipe Elbow **FI-EW**
- \* Outside Tube Diameter D1 (in mm) **-10**
- \* Series **L**  
Light Series  
**S**  
Heavy Series
- \* Material Code **-W3**  
Steel, zinc/nickel-plated
- Please contact STAUFF for alternative materials and surface finishings.
- \* Assembling / Kitting **-SV**  
Fitting body assembled with cutting ring and union nut on the standpipe
- MS+SV**  
Fitting body assembled with cutting rings and union nuts on all ends

Series	Tube OD	PN bar	Dimensions							Weight kg ca. per 100	Ordering Codes <sup>3</sup>	
	mm D1		mm D2	L	L1 <sup>1</sup>	L2	L3	S1	S2			
L	6	500	4	19	27	12	26	12	14	2,89	FI-EW-06L-W3-SV	
	8	500	6	21	29	14	27,5	12	17	3,89	FI-EW-08L-W3-SV	
	10	500	8	22	30	15	29	14	19	5,20	FI-EW-10L-W3-SV	
	12	400	10	24	32	17	29,5	17	22	7,20	FI-EW-12L-W3-SV	
	15	400	12	28	36	21	32,5	19	27	17,20	FI-EW-15L-W3-SV	
	18	400	15	31	40	23,5	35,5	24	32	17,70	FI-EW-18L-W3-SV	
	22	250	19	35	44	27,5	38,5	27	36	24,00	FI-EW-22L-W3-SV	
	28	250	24	38	47	30,5	41,5	36	41	35,70	FI-EW-28L-W3-SV	
	35	250	30	45	56	34,5	51	41	50	58,10	FI-EW-35L-W3-SV	
	42	250	36	51	63	40	56	50	60	87,00	FI-EW-42L-W3-SV	
	S	6	800	4	23	31	16	27	12	17	4,60	FI-EW-06S-W3-SV
		8	800	5	24	32	17	27,5	14	19	6,20	FI-EW-08S-W3-SV
10		800	7	25	34	17,5	30	17	22	8,80	FI-EW-10S-W3-SV	
12		630	8	29	38	21,5	31	17	24	10,90	FI-EW-12S-W3-SV	
14		630	10	30	40	22	35	19	27	14,90	FI-EW-14S-W3-SV	
16		630	11	33	43	24,5	36,5	24	30	20,10	FI-EW-16S-W3-SV	
20		400	16	37	48	26,5	44,5	27	36	30,60	FI-EW-20S-W3-SV	
25		400	20	42	54	30	50	36	46	55,40	FI-EW-25S-W3-SV	
30		400	25	49	62	35,5	55	41	50	79,80	FI-EW-30S-W3-SV	
38		400	32	57	72	41	63	50	60	110,30	FI-EW-38S-W3-SV	

### Connecting Parts

-  Cutting Ring  
Type **FI-DS** Page 28
-  Soft-Sealing Cutting Ring  
Type **FI-WDDS** Page 29
-  Support Sleeve  
Type **FI-VH** Page 31
-  STAUFF Form EVO Sealing Ring  
Type **FI-FD** Page 32
-  Union Nut  
Type **FI-M** Page 33
-  37° Flared Tube Fitting Set  
Type **FI-AB** Page 37

<sup>1</sup> Approximate dimension in assembled condition.

<sup>2</sup> Weight including cutting ring and union nut on the standpipe.

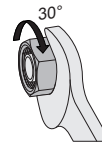
<sup>3</sup> Standard scope of delivery: Fitting body assembled with cutting ring and union nut on the standpipe.



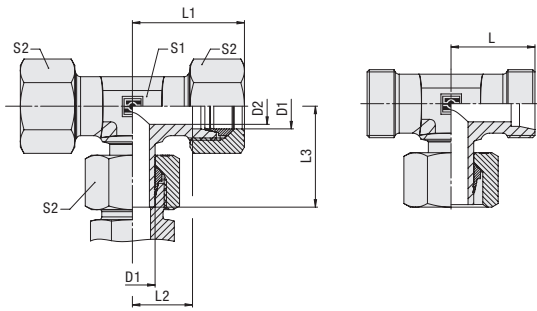
Typical application with a Straight Male Stud Fitting FI-GE-...

Please note: Standpipes are always factory-assembled with cutting rings and union nuts.

The union nut assembled on the standpipe has to be tightened by only 1/12 a turn (equivalent to 30°) beyond the fixed point.



## Adjustable Standpipe Branch Tee Type FI-ET ■ Series L / S



Series	Tube OD mm	PN bar	Dimensions mm							Weight kg ca. per 100	Ordering Codes <sup>3</sup>
			D2	L	L1 <sup>1</sup>	L2	L3	S1	S2		
L	6	500	4	19	27	12	26	12	14	3,60	FI-ET-06L-W3-SV
	8	500	6	21	29	14	27,5	12	17	4,70	FI-ET-08L-W3-SV
	10	500	8	22	30	15	29	14	19	6,10	FI-ET-10L-W3-SV
	12	400	10	24	32	17	29,5	17	22	8,30	FI-ET-12L-W3-SV
	15	400	12	28	36	21	32,5	19	27	14,40	FI-ET-15L-W3-SV
	18	400	15	31	40	23,5	35,5	24	32	20,70	FI-ET-18L-W3-SV
	22	250	19	35	44	27,5	38,5	27	36	29,30	FI-ET-22L-W3-SV
	28	250	24	38	47	30,5	41,5	36	41	40,80	FI-ET-28L-W3-SV
	35	250	30	45	56	34,5	51	41	50	65,00	FI-ET-35L-W3-SV
	42	250	36	51	63	40	56	50	60	87,90	FI-ET-42L-W3-SV
S	6	800	4	23	31	16	27	12	17	5,80	FI-ET-06S-W3-SV
	8	800	5	24	32	17	27,5	14	19	7,80	FI-ET-08S-W3-SV
	10	800	7	25	34	17,5	30	17	22	10,20	FI-ET-10S-W3-SV
	12	630	8	29	38	21,5	31	17	24	13,50	FI-ET-12S-W3-SV
	14	630	10	30	40	22	35	19	27	17,70	FI-ET-14S-W3-SV
	16	630	12	33	43	24,5	36,5	24	30	23,70	FI-ET-16S-W3-SV
	20	400	16	37	48	26,5	44,5	27	36	36,50	FI-ET-20S-W3-SV
	25	400	20	42	54	30	50	36	46	63,70	FI-ET-25S-W3-SV
	30	400	25	49	62	35,5	55	41	50	88,90	FI-ET-30S-W3-SV
	38	400	32	57	72	41	63	50	60	135,80	FI-ET-38S-W3-SV

### Ordering Codes

**\*FI-ET\*-10\*L\*-W3\*-MS+SV**

- \* Adjustable Standpipe Branch Tee **FI-ET**
- \* Outside Tube Diameter D1 (in mm) **-10**
- \* Series **L**  
Light Series  
**S**  
Heavy Series
- \* Material Code **-W3**  
Steel, zinc/nickel-plated
- Please contact STAUFF for alternative materials and surface finishings.
- \* Assembling / Kitting **-SV**  
Fitting body assembled with cutting ring and union nut on the standpipe
- MS+SV**  
Fitting body assembled with cutting rings and union nuts on all ends

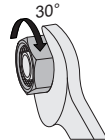
<sup>1</sup> Approximate dimension in assembled condition.

<sup>2</sup> Weight including cutting ring and union nut on the standpipe.

<sup>3</sup> Standard scope of delivery: Fitting body assembled with cutting ring and union nut on the standpipe.

Please note: Standpipes are always factory-assembled with cutting rings and union nuts.

The union nut assembled on the standpipe has to be tightened by only 1/12 a turn (equivalent to 30°) beyond the fixed point.

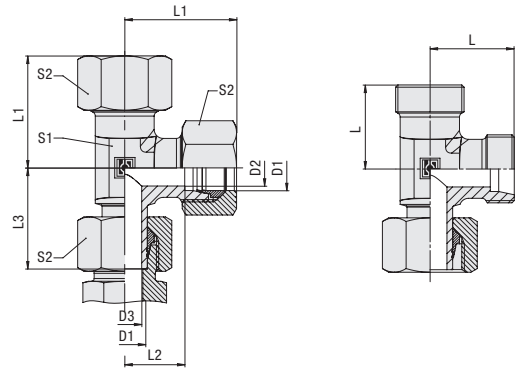
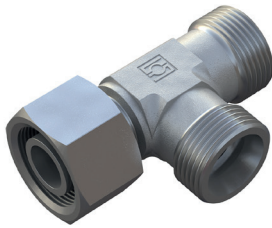


Typical application with a Straight Male Stud Fitting FI-GE-...

### Connecting Parts

- Cutting Ring Type **FI-DS** Page 28
- Soft-Sealing Cutting Ring Type **FI-WDDS** Page 29
- Support Sleeve Type **FI-VH** Page 31
- STAUFF Form EVO Sealing Ring Type **FI-FD** Page 32
- Union Nut Type **FI-M** Page 33
- 37° Flared Tube Fitting Set Type **FI-AB** Page 37

### Adjustable Standpipe Barrel Tee Type FI-EL ▪ Series L / S



#### Ordering Codes

**\*FI-EL\*-10\*L\*-W3\*-MS+SV**

- \* Adjustable Standpipe Barrel Tee **FI-EL**
- \* Outside Tube Diameter D1 (in mm) **-10**
- \* Series **L**  
Light Series  
**S**Heavy Series
- \* Material Code **-W3**  
Steel, zinc/nickel-plated
- Please contact STAUFF for alternative materials and surface finishings.
- \* Assembling / Kitting **-SV**  
Fitting body assembled with cutting ring and union nut on the standpipe
- MS+SV**  
Fitting body assembled with cutting rings and union nuts on all ends

Series	Tube OD	PN bar	Dimensions							Weight kg ca. per 100	Ordering Codes <sup>3</sup>
	mm		mm	L	L1 <sup>1</sup>	L2	L3	S1	S2		
L	6	500	4	19	27	12	26	12	14	3,60	FI-EL-06L-W3-SV
	8	500	6	21	29	14	27,5	12	17	4,70	FI-EL-08L-W3-SV
	10	500	8	22	30	15	29	14	19	6,10	FI-EL-10L-W3-SV
	12	400	10	24	32	17	29,5	17	22	8,30	FI-EL-12L-W3-SV
	15	400	12	28	36	21	32,5	19	27	14,40	FI-EL-15L-W3-SV
	18	400	15	31	40	23,5	35,5	24	32	20,70	FI-EL-18L-W3-SV
	22	250	19	35	44	27,5	38,5	27	36	29,30	FI-EL-22L-W3-SV
	28	250	24	38	47	30,5	41,5	36	41	40,80	FI-EL-28L-W3-SV
	35	250	30	45	56	34,5	51	41	50	65,00	FI-EL-35L-W3-SV
	42	250	36	51	63	40	56	50	60	87,90	FI-EL-42L-W3-SV
S	6	800	4	23	31	16	27	12	17	5,80	FI-EL-06S-W3-SV
	8	800	5	24	32	17	27,5	14	19	7,80	FI-EL-08S-W3-SV
	10	800	7	25	34	17,5	30	17	22	10,20	FI-EL-10S-W3-SV
	12	630	8	29	38	21,5	31	17	24	13,50	FI-EL-12S-W3-SV
	14	630	10	30	40	22	35	19	27	17,70	FI-EL-14S-W3-SV
	16	630	12	33	43	24,5	36,5	24	30	23,70	FI-EL-16S-W3-SV
	20	400	16	37	48	26,5	44,5	27	36	36,50	FI-EL-20S-W3-SV
	25	400	20	42	54	30	50	36	46	63,70	FI-EL-25S-W3-SV
	30	400	25	49	62	35,5	55	41	50	88,90	FI-EL-30S-W3-SV
	38	420	32	57	72	41	63	50	60	135,80	FI-EL-38S-W3-SV

#### Connecting Parts

-  Cutting Ring  
Type **FI-DS** Page 28
-  Soft-Sealing Cutting Ring  
Type **FI-WDDS** Page 29
-  Support Sleeve  
Type **FI-VH** Page 31
-  STAUFF Form EVO Sealing Ring  
Type **FI-FD** Page 32
-  Union Nut  
Type **FI-M** Page 33
-  37° Flared Tube Fitting Set  
Type **FI-AB** Page 37

<sup>1</sup> Approximate dimension in assembled condition.

<sup>2</sup> Weight including cutting ring and union nut on the standpipe.

<sup>3</sup> Standard scope of delivery: Fitting body assembled with cutting ring and union nut on the standpipe.



Typical application with a Straight Male Stud Fitting FI-GE-...

Please note: Standpipes are always factory-assembled with cutting rings and union nuts.

The union nut assembled on the standpipe has to be tightened by only 1/12 a turn (equivalent to 30°) beyond the fixed point.

