



STAUFF Connect

Metric tube connectors, assembly tools
and accessories

Product Catalogue

Version
10/2025



Swivel Elbow

FI-DGWE

196-197



**Whitworth Parallel Pipe Thread (BSPP) /
Retaining Ring with Captive Seal**
FI-DGWE-...-R-WD

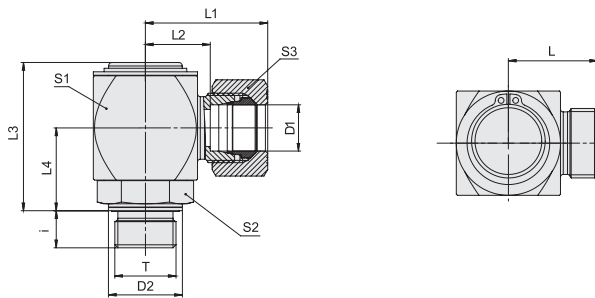
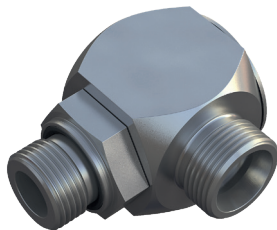
196



**Metric Parallel Thread /
Retaining Ring with Captive Seal**
FI-DGWE-...-M-WD

197

Swivel Elbow
Type FI-DGWE-...-R-WD ▪ Series L / S



Ordering Codes

- *FI-DGWE*-10*L*R*-WD*-B*-W66*-MS**
- * Swivel Elbow** **FI-DGWE**
- * Outside Tube Diameter D1 (in mm)** **-10**
- * Series** **L**
Light Series
SHeavy Series
- * Thread Type** **R**
Whitworth Parallel
Pipe Thread (BSPP)
- If required, please indicate special sizes, e.g. R1/8!
- * Seal Type** **-WD**
Profile Sealing Ring
- * Seal Material** **-B**
NBR (Buna-N®)
-VFKM (Viton®)
- * Material Code** **-W66**
Steel, zinc-plated and
thick-film-passivated
- * Assembling / Kitting** **—**
Fitting body only
- MS**
Fitting body supplied with
cutting ring and union nut
- MSV**
Fitting body supplied with
soft-sealing cutting ring
and union nut

Please contact STAUFF for alternative materials and surface finishings.

Whitworth Parallel Pipe Thread (BSPP)

Profile Sealing Ring

Series	Tube OD mm	PN bar	Dimensions mm											Torque N-m	Weight kg ca. per 100	Ordering Codes ³
			D1	T	D2	i	L	L1 ¹	L2	L3	L4	S1	S2			
L	6	250	G 1/8	14	8	23	31	16	40	21	27	19	14	18	16,00	FI-DGWE-06LR-WD-B-W66
	6	250	G 1/4	19	12	23	27	16	41	22	27	19	14	40	16,8	FI-DGWE-06LR1/4-WD-B-W66
	8	250	G 1/4	19	12	25	33	18	46	25	30	22	17	40	23,00	FI-DGWE-08LR-WD-B-W66
	10	250	G 1/4	19	12	26	34	19	46	25	30	22	19	40	23,40	FI-DGWE-10LR-WD-B-W66
	10	250	G 3/8	22	12	27	35	20	48	27	32	24	19	80	27,50	FI-DGWE-10LR3/8-WD-B-W66
	12	250	G 3/8	22	12	27	35	20	48	27	32	24	22	80	28,00	FI-DGWE-12LR-WD-B-W66
	12	250	G 1/2	27	14	29	37	22	55	30	36	27	22	110	38,80	FI-DGWE-12LR1/2-WD-B-W66
	15	250	G 1/2	27	14	32	40	25	59	33	40	32	27	110	52,80	FI-DGWE-15LR-WD-B-W66
	18	160	G 1/2	27	14	32	41	24,5	59	33	40	32	32	110	52,60	FI-DGWE-18LR-WD-B-W66
	22	160	G 3/4	32	16	36	45	28,5	66	35	45	36	36	180	72,00	FI-DGWE-22LR-WD-B-W66
	28	100	G 1	40	18	41	50	33,5	78	41	55	41	41	300	126,70	FI-DGWE-28LR-WD-B-W66
	35	100	G 1 1/4	50	20	48	59	37,5	92	51	65	50	50	470	208,00	FI-DGWE-35LR-WD-B-W66
	42	100	G 1 1/2	55	22	53	65	42	102	56	75	55	60	540	294,00	FI-DGWE-42LR-WD-B-W66
	6	400	G 1/4	19	12	25	33	18	41	22	27	19	17	50	17,40	FI-DGWE-06SR-WD-B-W66
	S	8	400	G 1/4	19	12	25	33	18	41	22	27	19	19	50	18,00
10		400	G 3/8	22	12	27	36	19,5	46	25	30	22	22	80	24,20	FI-DGWE-10SR-WD-B-W66
12		400	G 3/8	22	12	28	37	20,5	48	27	32	24	24	80	28,80	FI-DGWE-12SR-WD-B-W66
14		400	G 1/2	27	14	32	42	24	55	30	36	27	30	120	38,00	FI-DGWE-14SR-WD-B-W66
16		400	G 1/2	27	14	34	44	25,5	59	33	40	32	30	120	52,80	FI-DGWE-16SR-WD-B-W66
20		250	G 3/4	32	16	38	49	27,5	66	35	45	36	36	180	74,00	FI-DGWE-20SR-WD-B-W66
25		250	G 1	40	18	45	57	33	78	41	55	41	46	300	128,00	FI-DGWE-25SR-WD-B-W66
30		250	G 1 1/4	50	20	52	65	38,5	92	51	65	50	50	470	214,00	FI-DGWE-30SR-WD-B-W66
38		250	G 1 1/2	55	22	59	74	43	102	56	75	55	60	560	298,00	FI-DGWE-38SR-WD-B-W66

¹ Approximate dimension in assembled condition.

² Weight excluding cutting ring and union nut.

³ Standard scope of delivery: Fitting body only.

Standard seal material is NBR (Buna-N®).

Male stud acc. to ISO 1179-2 (Type E)

Port acc. to ISO 1179-1

Torque recommendations for Steel mating material.

Connecting Parts

- Cutting Ring
Type **FI-DS** Page 28
- Soft-Sealing Cutting Ring
Type **FI-WDDS** Page 29
- Support Sleeve
Type **FI-VH** Page 31
- STAUFF Form EVO Sealing Ring
Type **FI-FD** Page 32
- Union Nut
Type **FI-M** Page 33
- 37° Flared Tube Fitting Set
Type **FI-AB** Page 37

Spare Parts / Accessories

- Profile Sealing Ring
Type **WDG** Page 238

Maximum Number of Revolutions per Minute for Permanent Operation

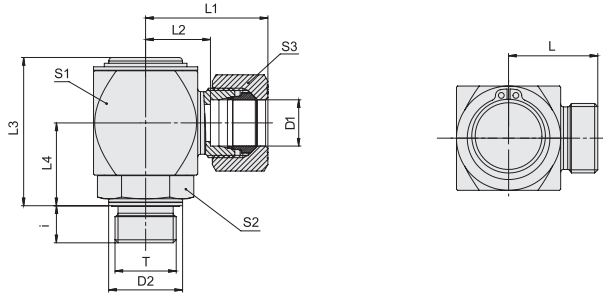
Dimension S1 (mm)	27	30	32	36	40	45	55	65	75
Revolutions Per Minute	6	3	3	1	0,6	0,5	0,4	0,2	0,2

Higher number of revolutions per minute possible when used temporarily / non-permanently.

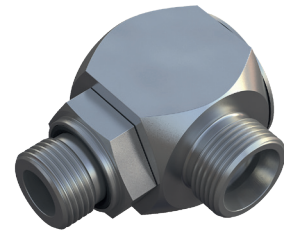
Recommendations for use with hydraulic oil at a static working pressure not exceeding 200 bar.

Male threaded studs were designed for female threaded ports in components made of steel. For applications with components made of softer mating materials (e.g. Aluminium), the use of connectors with additionally rolled male threads is recommended.

Please contact STAUFF prior to the assembly for further information.



Swivel Elbow
Type FI-DGWE-...-M-WD • Series L / S



Profile Sealing Ring

Metric Parallel Thread

Series	Tube OD mm D1	PN bar	Dimensions mm													Torque N-m Thread T	Weight kg ca. per 100	Ordering Codes ³
			T	D2	i	L	L ¹	L ²	L ³	L ⁴	S1	S2	S3					
L	6	250	M 10 x 1	14	8	23,5	31,5	16,5	40	21	27	19	14	18	15,60	FI-DGWE-06LM-WD-B-W66		
	6	250	M 12 x 1,5	17	12	23,5	31,5	16,5	41	22	27	19	14	25	16,00	FI-DGWE-06LM12x1.5-WD-B-W66		
	8	250	M 12 x 1,5	17	12	23,5	31,5	16,5	41	22	27	19	17	25	16,80	FI-DGWE-08LM-WD-B-W66		
	8	250	M 14 x 1,5	19	12	25	33	18	46	25	30	22	17	45	23,30	FI-DGWE-08LM14x1.5-WD-B-W66		
	10	250	M 14 x 1,5	19	12	26	34	19	46	25	30	22	19	45	23,00	FI-DGWE-10LM-WD-B-W66		
	10	250	M 16 x 1,5	22	12	27	35	20	48	27	32	24	19	60	24,80	FI-DGWE-10LM16x1.5-WD-B-W66		
	12	250	M 16 x 1,5	22	12	27	35	20	48	27	32	24	22	60	27,50	FI-DGWE-12LM-WD-B-W66		
	12	250	M 18 x 1,5	24	12	29	37	22	55	30	36	27	22	100	39,20	FI-DGWE-12LM18x1.5-WD-B-W66		
	15	250	M 18 x 1,5	24	12	30	38	23	55	30	36	27	27	100	39,00	FI-DGWE-15LM-WD-B-W66		
	15	250	M 22 x 1,5	27	14	32	40	25	59	33	40	32	27	125	52,50	FI-DGWE-15LM22x1.5-WD-B-W66		
	18	160	M 22 x 1,5	27	14	32	41	24,5	59	33	40	32	32	125	53,50	FI-DGWE-18LM-WD-B-W66		
	22	160	M 26 x 1,5	32	16	36,5	45,5	29	66	35	45	36	36	180	70,00	FI-DGWE-22LM-WD-B-W66		
	28	100	M 33 x 2	40	18	41,5	51	34	78	41	55	41	41	300	128,00	FI-DGWE-28LM-WD-B-W66		
	35	100	M 42 x 2	50	20	48,5	59,5	38	92	50	65	50	50	450	206,00	FI-DGWE-35LM-WD-B-W66		
	42	100	M 48 x 2	55	22	53,5	65,5	42,5	102	56	75	55	60	540	294,00	FI-DGWE-42LM-WD-B-W66		
S	6	400	M 12 x 1,5	17	12	25,5	33,5	18,5	41	22	27	19	17	35	17,20	FI-DGWE-06SM-WD-B-W66		
	8	400	M 14 x 1,5	19	12	25,5	33,5	18,5	41	22	27	19	19	55	18,20	FI-DGWE-08SM-WD-B-W66		
	10	400	M 16 x 1,5	22	12	27	36	19,5	46	25	30	22	22	70	23,80	FI-DGWE-10SM-WD-B-W66		
	12	400	M 18 x 1,5	24	12	28	37	20,5	48	27	32	24	24	90	28,20	FI-DGWE-12SM-WD-B-W66		
	14	400	M 20 x 1,5	26	14	32	42	24	55	30	36	27	30	125	45,00	FI-DGWE-14SM-WD-B-W66		
	16	400	M 22 x 1,5	27	14	34	44	25,5	59	33	40	32	30	135	53,60	FI-DGWE-16SM-WD-B-W66		
	20	250	M 27 x 2	32	16	38,5	49,5	28	66	35	45	36	36	180	71,50	FI-DGWE-20SM-WD-B-W66		
	25	250	M 33 x 2	40	18	45,5	57,5	33,5	78	41	55	41	46	310	128,20	FI-DGWE-25SM-WD-B-W66		
	30	250	M 42 x 2	50	20	52,5	65,5	39	92	51	65	50	50	470	210,00	FI-DGWE-30SM-WD-B-W66		
	38	250	M 48 x 2	55	22	59,5	74,5	43,5	102	56	75	55	60	800	300,00	FI-DGWE-38SM-WD-B-W66		

Ordering Codes

***FI-DGWE*-10*L*M*-WD*-B*-W66*-MS**

- * Swivel Elbow FI-DGWE
- * Outside Tube Diameter D1 (in mm) -10
- * Series Light Series L
Heavy Series S
- * Thread Type Metric Parallel Thread M
- If required, please indicate special sizes, e.g. M27x2!
- * Seal Type Profile Sealing Ring -WD
- * Seal Material NBR (Buna-N®) -B
FKM (Viton®) -V
- * Material Code Steel, zinc-plated and thick-film-passivated -W66
- Please contact STAUFF for alternative materials and surface finishings.
- * Assembling / Kitting Fitting body only —
Fitting body supplied with cutting ring and union nut -MS
Fitting body supplied with soft-sealing cutting ring and union nut -MSV

¹ Approximate dimension in assembled condition.
² Weight excluding cutting ring and union nut.
³ Standard scope of delivery: Fitting body only.
Standard seal material is NBR (Buna-N®).

Male stud acc. to ISO 9974-2 (Type E)
Port acc. to ISO 9974-1
Torque recommendations for Steel mating material.

Maximum Number of Revolutions per Minute for Permanent Operation

Dimension S1 (mm)	27	30	32	36	40	45	55	65	75
Revolutions Per Minute	6	3	3	1	0,6	0,5	0,4	0,2	0,2

Higher number of revolutions per minute possible when used temporarily / non-permanently.
Recommendations for use with hydraulic oil at a static working pressure not exceeding 200 bar.

Male threaded studs were designed for female threaded ports in components made of steel. For applications with components made of softer mating materials (e.g. Aluminium), the use of connectors with additionally rolled male threads is recommended.
Please contact STAUFF prior to the assembly for further information.

Connecting Parts

	Cutting Ring Type FI-DS	Page 28
	Soft-Sealing Cutting Ring Type FI-WDDS	Page 29
	Support Sleeve Type FI-VH	Page 31
	STAUFF Form EVO Sealing Ring Type FI-FD	Page 32
	Union Nut Type FI-M	Page 33
	37° Flared Tube Fitting Set Type FI-AB	Page 37

Spare Parts / Accessories

	Profile Sealing Ring Type WDG	Page 238
--	----------------------------------	----------