









STAUFF Connect

Metric tube connectors, assembly tools
and accessories

Product Catalogue

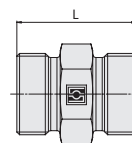
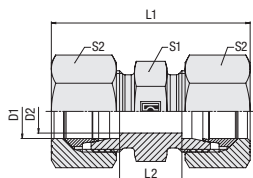
Version
10/2025



	Straight Union FI-G	96
	Straight Reducer FI-G	97
	Equal Elbow FI-W	99
	Equal Tee FI-T	100
	Tee Reducer FI-T	101
	Equal Cross FI-K	104

D

Straight Union Type FI-G ▪ Series LL / L / S



D

Ordering Codes

FI-G-10*L*-W3*-MS

- * Straight Union **FI-G**
- * Outside Tube Diameter D1 (in mm) **-10**
- * Series **LL**
 Extra-Light Series **L**
 Light Series **S**
 Heavy Series
- * Material Code **-W3**
 Steel, zinc/nickel-plated
- Please contact STAUFF for alternative materials and surface finishings.
- * Assembling / Kitting **—**
 Fitting body only
- MS**
 Fitting body supplied with cutting rings and union nuts
- MSV**
 Fitting body supplied with soft-sealing cutting rings and union nuts

Series	Tube OD mm D1	PN bar	Dimensions mm						Weight kg ca. per 100	Ordering Codes ³	
			D2	L	L1 ¹	L2	S1	S2			
LL	4	100	3	20	31	12	9	10	0,53	FI-G-04LL-W3	
	6	100	4,5	20	32	9	11	12	0,79	FI-G-06LL-W3	
	8	100	6	23	35	12	12	14	1,05	FI-G-08LL-W3	
	10	100	8	23	35	12	14	17	1,29	FI-G-10LL-W3	
	12	100	10	23	35	11	17	19	1,83	FI-G-12LL-W3	
L	6	500	4	24	39	10	12	14	1,44	FI-G-06L-W3	
	8	500	6	25	40	11	14	17	1,90	FI-G-08L-W3	
	10	500	8	27	42	13	17	19	2,60	FI-G-10L-W3	
	12	400	10	28	43	14	19	22	2,67	FI-G-12L-W3	
	15	400	12	30	46	16	24	27	4,81	FI-G-15L-W3	
	18	400	15	31	48	16	27	32	6,65	FI-G-18L-W3	
	22	250	19	35	52	20	32	36	8,94	FI-G-22L-W3	
	28	250	24	36	54	21	41	41	13,90	FI-G-28L-W3	
	35	250	30	41	63	20	46	50	21,11	FI-G-35L-W3	
	42	250	36	43	66	21	55	60	29,26	FI-G-42L-W3	
	S	6	800	4	30	45	16	14	17	2,52	FI-G-06S-W3
		8	800	5	32	47	18	17	19	3,67	FI-G-08S-W3
		10	800	7	32	49	17	19	22	4,23	FI-G-10S-W3
12		630	8	34	51	19	22	24	5,88	FI-G-12S-W3	
14		630	10	38	57	22	24	27	7,52	FI-G-14S-W3	
16		630	12	38	57	21	27	30	9,20	FI-G-16S-W3	
20		420	16	44	66	23	32	36	14,27	FI-G-20S-W3	
25		420	20	50	74	26	41	46	24,99	FI-G-25S-W3	
30		420	25	54	80	27	46	50	33,08	FI-G-30S-W3	
38		420	32	61	90	29	55	60	53,80	FI-G-38S-W3	

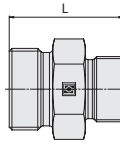
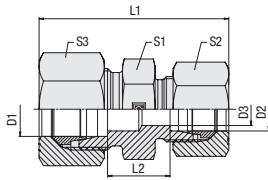
Connecting Parts

- Cutting Ring
Type **FI-DS** Page 28
- Soft-Sealing Cutting Ring
Type **FI-WDDS** Page 29
- Support Sleeve
Type **FI-VH** Page 31
- STAUFF Form EVO Sealing Ring
Type **FI-FD** Page 32
- Union Nut
Type **FI-M** Page 33
- 37° Flared Tube Fitting Set
Type **FI-AB** Page 37

¹ Approximate dimension in assembled condition.

² Weight excluding cutting rings and union nuts.

³ Standard scope of delivery: Fitting body only.

**Straight Reducer
Type FI-G ▪ Series LL / L**

D

Series	Tube OD mm		PN bar	Dimensions mm							Weight kg ca. per 100	Ordering Codes ³
	D1	D2		D3	L	L1 ¹	L2	S1	S2	S3		
LL	6	4	100	3	20	32	10,5	11	10	12	0,70	FI-G-06/04LL-W3
	8	4	100	3	22	34	12,5	12	10	14	1,00	FI-G-08/04LL-W3
	8	6	100	4	22	34	11	12	12	14	0,99	FI-G-08/06LL-W3
L	8	6	500	4	25	40	11	14	14	17	1,61	FI-G-08/06L-W3
	10	6	500	4	26	41	12	17	14	19	1,99	FI-G-10/06L-W3
	10	8	500	6	26	41	12	17	17	19	2,21	FI-G-10/08L-W3
	12	6	400	4	27	42	13	19	14	22	2,47	FI-G-12/06L-W3
	12	8	400	6	27	42	13	19	17	22	2,63	FI-G-12/08L-W3
	12	10	400	8	28	43	14	19	19	22	2,81	FI-G-12/10L-W3
	15	6	400	4	29	47	15	24	14	27	4,55	FI-G-15/06L-W3
	15	8	400	6	29	47	15	24	17	27	4,56	FI-G-15/08L-W3
	15	10	400	8	29	45	15	24	19	27	4,36	FI-G-15/10L-W3
	15	12	400	10	29	45	15	24	22	27	4,42	FI-G-15/12L-W3
	18	8	400	6	30	48	15,5	27	17	32	6,25	FI-G-18/08L-W3
	18	10	400	8	30	46	15,5	27	19	32	6,01	FI-G-18/10L-W3
	18	12	400	10	30	46	15,5	27	22	32	5,56	FI-G-18/12L-W3
	18	15	400	12	31	48	16,5	27	27	32	6,73	FI-G-18/15L-W3
	22	8	250	6	31	50	16,5	32	17	36	7,56	FI-G-22/08L-W3
	22	10	250	8	32	51	17,5	32	19	36	1,36	FI-G-22/10L-W3
	22	12	250	10	32	48	17,5	32	22	36	7,99	FI-G-22/12L-W3
	22	15	250	12	33	50	18,5	32	27	36	8,37	FI-G-22/15L-W3
	22	18	250	15	33	50	18	32	32	36	8,76	FI-G-22/18L-W3
	28	10	250	8	33	53	18,5	41	19	41	12,12	FI-G-28/10L-W3
	28	12	250	10	33,5	54	19	41	22	41	13,02	FI-G-28/12L-W3
	28	15	250	12	34	55	19,5	41	27	41	13,12	FI-G-28/15L-W3
	28	18	250	15	34	52	19	41	32	41	13,29	FI-G-28/18L-W3
28	22	250	19	36	54	21	41	36	41	13,61	FI-G-28/22L-W3	
35	18	250	15	37	60	19	46	32	50	19,74	FI-G-35/18L-W3	
35	22	250	19	39	59	21	46	36	50	19,99	FI-G-35/22L-W3	
35	28	250	24	39	59	21	46	41	50	19,71	FI-G-35/28L-W3	

¹ Approximate dimension in assembled condition.

² Weight excluding cutting rings and union nuts.

³ Standard scope of delivery: Fitting body only.

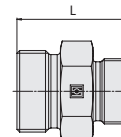
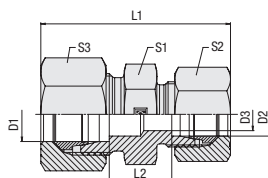
Ordering Codes
***FI-G*-10/*08*L*-W3*-MS**

* Straight Reducer		FI-G
* Outside Tube Diameter D1 (in mm)		-10
* Outside Tube Diameter D2 (in mm)		08
* Series	Extra-Light Series (page 97)	LL
	Light Series (pages 97/98)	L
	Heavy Series (page 98)	S
* Material Code	Steel, zinc/nickel-plated	-W3
Please contact STAUFF for alternative materials and surface finishings.		
* Assembling / Kitting	Fitting body only	—
	Fitting body supplied with cutting rings and union nuts	-MS
	Fitting body supplied with soft-sealing cutting rings and union nuts	-MSV

Connecting Parts

	Cutting Ring Type FI-DS	Page 28
	Soft-Sealing Cutting Ring Type FI-WDDS	Page 29
	Support Sleeve Type FI-VH	Page 31
	STAUFF Form EVO Sealing Ring Type FI-FD	Page 32
	Union Nut Type FI-M	Page 33
	37° Flared Tube Fitting Set Type FI-AB	Page 37

Straight Reducer Type FI-G ▪ Series L / S



D

Ordering Codes

***FI-G*-10/*08*L*-W3*-MS**

- * Straight Reducer **FI-G**
- * Outside Tube Diameter D1 (in mm) **-10**
- * Outside Tube Diameter D2 (in mm) **08**
- * Series **LL**
 Extra-Light Series (page 97)
L
 Light Series (pages 97/98)
S
 Heavy Series (page 98)
- * Material Code **-W3**
 Steel, zinc/nickel-plated
- Please contact STAUFF for alternative materials and surface finishings.
- * Assembling / Kitting **—**
 Fitting body only
- MS**
 Fitting body supplied with cutting rings and union nuts
- MSV**
 Fitting body supplied with soft-sealing cutting rings and union nuts

Connecting Parts

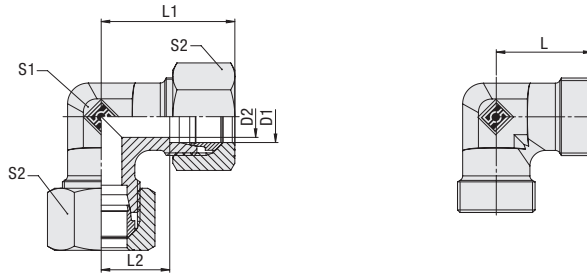
-  Cutting Ring
Type **FI-DS** Page 28
-  Soft-Sealing Cutting Ring
Type **FI-WDDS** Page 29
-  Support Sleeve
Type **FI-VH** Page 31
-  STAUFF Form EVO Sealing Ring
Type **FI-FD** Page 32
-  Union Nut
Type **FI-M** Page 33
-  37° Flared Tube Fitting Set
Type **FI-AB** Page 37

Series	Tube OD mm		PN bar	Dimensions mm							Weight kg ca. per 100	Ordering Codes ³
	D1	D2		D3	L	L1 ¹	L2	S1	S2	S3		
L	42	18	250	15	39,5	60	19	55	32	60	29,95	FI-G-42/18L-W3
	42	22	250	19	39,5	63	21	55	36	60	22,68	FI-G-42/22L-W3
	42	28	250	24	39,5	66	21	55	41	60	27,03	FI-G-42/28L-W3
	42	35	250	30	42,5	66	21	55	50	60	29,78	FI-G-42/35L-W3
S	8	6	800	4	32	47	18	17	17	19	3,46	FI-G-08/06S-W3
	10	6	800	4	32	48	17,5	19	17	22	4,40	FI-G-10/06S-W3
	10	8	800	5	32	48	17,5	19	19	22	4,26	FI-G-10/08S-W3
	12	6	630	4	34	50	19,5	22	17	24	5,56	FI-G-12/06S-W3
	12	8	630	5	34	50	19,5	22	19	24	4,03	FI-G-12/08S-W3
	12	10	630	7	34	51	19	22	22	24	5,86	FI-G-12/10S-W3
	14	10	630	7	36	54	20,5	24	22	27	7,16	FI-G-14/10S-W3
	14	12	630	8	36	54	20,5	24	24	27	7,34	FI-G-14/12S-W3
	16	6	630	4	35,5	55	20	27	17	30	7,78	FI-G-16/06S-W3
	16	8	630	5	35,5	55	20	27	19	30	7,86	FI-G-16/08S-W3
	16	10	630	7	36	54	20	27	22	30	7,95	FI-G-16/10S-W3
	16	12	630	8	36	54	20	27	24	30	9,32	FI-G-16/12S-W3
	16	14	630	10	38	57	21,5	27	27	30	8,95	FI-G-16/14S-W3
	20	10	420	7	40	60	22	32	22	36	12,93	FI-G-20/10S-W3
	20	12	420	8	40	60	22	32	24	36	13,19	FI-G-20/12S-W3
	20	16	420	12	42	63	23	32	30	36	13,38	FI-G-20/16S-W3
	25	12	420	8	45	68	25,5	41	24	46	23,92	FI-G-25/12S-W3
	25	16	420	12	46	68	25,5	41	30	46	22,87	FI-G-25/16S-W3
	25	20	420	16	48	71	25,5	41	36	46	23,66	FI-G-25/20S-W3
	30	12	420	8	46	71	25	46	24	50	29,2	FI-G-30/12S-W3
	30	16	420	12	48	74	26	46	30	50	29,61	FI-G-30/16S-W3
	30	20	420	16	50	74	26	46	36	50	30,33	FI-G-30/20S-W3
	30	25	420	20	52	77	26,5	46	46	50	31,79	FI-G-30/25S-W3
	38	16	420	12	53	80	28,5	55	30	60	46,99	FI-G-38/16S-W3
38	20	420	16	55	84	28,5	55	36	60	49,57	FI-G-38/20S-W3	
38	25	420	20	57	87	29	55	46	60	51,3	FI-G-38/25S-W3	
38	30	420	25	59	87	29,5	55	50	60	50,90	FI-G-38/30S-W3	

¹ Approximate dimension in assembled condition.

² Weight excluding cutting rings and union nuts.

³ Standard scope of delivery: Fitting body only.



Equal Elbow Type FI-W ▪ Series LL / L / S



Series	Tube OD mm	PN bar	Dimensions mm						Weight kg ca. per 100	Ordering Codes ³
			D1	D2	L	L ¹	L2	S1		
LL	4	100	3	15	21	11	9	10	1,29	FI-W-04LL-W3-PR
	6	100	4,5	15	21	9,5	11	12	1,57	FI-W-06LL-W3-PR
	8	100	6	17	23	11,5	12	14	2,22	FI-W-08LL-W3-PR
	10	100	8	18	23	12,5	12	17	2,70	FI-W-10LL-W3
	12	100	10	21	27	15	14	19	2,20	FI-W-12LL-W3
L	6	500	4	19	27	12	12	14	1,94	FI-W-06L-W3
	8	500	6	21	29	14	12	17	2,35	FI-W-08L-W3
	10	500	8	22	30	15	14	19	3,06	FI-W-10L-W3
	12	400	10	24	32	17	17	22	4,34	FI-W-12L-W3
	15	400	12	28	36	21	19	27	5,13	FI-W-15L-W3
	18	400	15	31	40	23,5	24	32	11,63	FI-W-18L-W3
	22	250	19	35	44	27,5	27	36	15,35	FI-W-22L-W3
	28	250	24	38	47	30,5	36	41	25,45	FI-W-28L-W3
	35	250	30	45	56	34,5	41	50	42,04	FI-W-35L-W3
	42	250	36	51	63	40	50	60	63,20	FI-W-42L-W3
	S	6	800	4	23	31	16	12	17	3,32
8		800	5	24	32	17	14	19	4,68	FI-W-08S-W3
10		800	7	25	34	17,5	17	22	6,02	FI-W-10S-W3
12		630	8	29	38	21,5	17	24	8,14	FI-W-12S-W3
14		630	10	30	40	22	19	27	9,86	FI-W-14S-W3
16		630	12	33	43	24,5	24	30	14,13	FI-W-16S-W3
20		420	16	37	48	26,5	27	36	20,50	FI-W-20S-W3
25		420	20	42	54	30	36	46	36,09	FI-W-25S-W3
30		420	25	49	62	35,5	41	50	40,20	FI-W-30S-W3
38		420	32	57	72	41	50	60	89,05	FI-W-38S-W3

¹ Approximate dimension in assembled condition.

² Weight excluding cutting rings and union nuts.

³ Standard scope of delivery: Fitting body only.

Ordering Codes

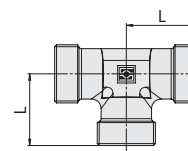
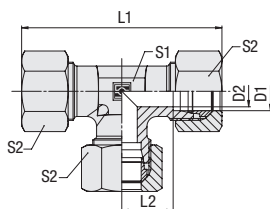
FI-W-10*L*-W3*-MS

* Equal Elbow		FI-W
* Outside Tube Diameter D1 (in mm)		-10
* Series	Extra-Light Series	LL
	Light Series	L
	Heavy Series	S
* Material Code	Steel, zinc/nickel-plated	-W3
Please contact STAUFF for alternative materials and surface finishings.		
* Design	Made from forging blanks	—
	Made from profile material	PR
* Assembling / Kitting	Fitting body only	—
	Fitting body supplied with cutting rings and union nuts	-MS
	Fitting body supplied with soft-sealing cutting rings and union nuts	-MSV

Connecting Parts

	Cutting Ring Type FI-DS	Page 28
	Soft-Sealing Cutting Ring Type FI-WDDS	Page 29
	Support Sleeve Type FI-VH	Page 31
	STAUFF Form EVO Sealing Ring Type FI-FD	Page 32
	Union Nut Type FI-M	Page 33
	37° Flared Tube Fitting Set Type FI-AB	Page 37

Equal Tee
Type FI-T ▪ Series LL / L / S



D

Ordering Codes

***FI-T*-10*L*-W3*-MS**

- * Equal Tee **FI-T**
- * Outside Tube Diameter D1 (in mm) **-10**
- * Series **LL**
 Extra-Light Series **L**
 Light Series **S**
 Heavy Series
- * Material Code **-W3**
 Steel, zinc/nickel-plated
- Please contact STAUFF for alternative materials and surface finishings.
- * Assembling / Kitting **—**
 Fitting body only
- MS**
 Fitting body supplied with cutting rings and union nuts
- MSV**
 Fitting body supplied with soft-sealing cutting rings and union nuts

Series	Tube OD mm D1	PN bar	Dimensions mm						Weight kg ca. per 100	Ordering Codes ³	
			D2	L	L1 ¹	L2	S1	S2			
LL	4	100	3	15	42	11	9	10	1,00	FI-T-04LL-W3	
	6	100	4,5	15	42	9,5	9	12	1,23	FI-T-06LL-W3	
	8	100	6	17	46	11,5	12	14	1,91	FI-T-08LL-W3	
	10	100	8	21,5	54	16	14	17	3,42	FI-T-10LL-W3	
	12	100	10	21,5	59	15	14	19	3,80	FI-T-12LL-W3	
L	6	500	4	19	54	12	12	14	2,66	FI-T-06L-W3	
	8	500	6	21	58	14	12	17	3,17	FI-T-08L-W3	
	10	500	8	22	60	15	14	19	4,06	FI-T-10L-W3	
	12	400	10	24	64	17	17	22	5,52	FI-T-12L-W3	
	15	400	12	28	72	21	19	27	9,98	FI-T-15L-W3	
	18	400	15	31	80	23,5	24	32	14,83	FI-T-18L-W3	
	22	250	19	35	88	27,5	27	36	18,81	FI-T-22L-W3	
	28	250	24	38	94	30,5	36	41	30,44	FI-T-28L-W3	
	35	250	30	45	112	34,5	41	50	49,27	FI-T-35L-W3	
	42	250	36	51	126	40	50	60	72,20	FI-T-42L-W3	
	S	6	800	4	23	62	16	12	17	4,60	FI-T-06S-W3
		8	800	5	24	64	17	14	19	6,21	FI-T-08S-W3
10		800	7	25	68	17,5	17	22	7,92	FI-T-10S-W3	
12		630	8	29	76	21,5	17	24	10,88	FI-T-12S-W3	
14		630	10	30	80	22	19	27	12,97	FI-T-14S-W3	
16		630	12	33	86	24,5	24	30	10,97	FI-T-16S-W3	
20		420	16	37	96	26,5	27	36	25,58	FI-T-20S-W3	
25		420	20	42	108	30	36	46	44,75	FI-T-25S-W3	
30		420	25	49	124	35,5	41	50	68,20	FI-T-30S-W3	
38		420	32	57	144	41	50	60	108,00	FI-T-38S-W3	

Connecting Parts

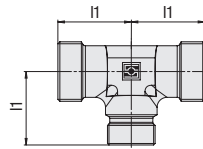
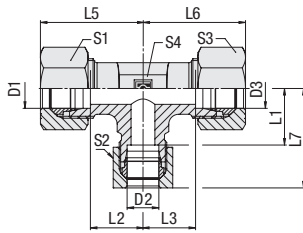
- Cutting Ring
Type **FI-DS** Page 28
- Soft-Sealing Cutting Ring
Type **FI-WDDS** Page 29
- Support Sleeve
Type **FI-VH** Page 31
- STAUFF Form EVO Sealing Ring
Type **FI-FD** Page 32
- Union Nut
Type **FI-M** Page 33
- 37° Flared Tube Fitting Set
Type **FI-AB** Page 37

¹ Approximate dimension in assembled condition.

² Weight excluding cutting rings and union nuts.

³ Standard scope of delivery: Fitting body only.

Tee Reducer
Type FI-T • Series L



Sequence of connections
in the ordering codes for
tee reducers:



D

Series	Tube OD mm			PN bar	Dimensions mm							Weight kg ca. per 100	Ordering Codes ³				
	D1	D2	D3		I1	L1	L2	L3	L5 ¹	L6 ¹	L7 ¹			S1	S2	S3	S4
L	6	8	6	500	21	14	14	14	29	29	29	14	17	14	12	3,81	FI-T-06/08/06L-W3
	6	10	6	500	22	15	15	15	30	30	30	14	19	14	14	4,90	FI-T-06/10/06L-W3
	8	6	8	500	21	14	14	14	29	29	29	17	14	17	12	3,27	FI-T-08/06/08L-W3
	8	10	8	500	22	15	15	15	30	30	30	17	19	17	14	4,35	FI-T-08/10/08L-W3
	8	12	8	400	24	17	17	17	32	32	32	17	22	17	17	5,94	FI-T-08/12/08L-W3
	10	6	10	500	22	15	15	15	30	30	30	19	14	19	14	4,18	FI-T-10/06/10L-W3
	10	8	10	500	22	15	15	15	30	30	30	19	17	19	14	4,11	FI-T-10/08/10L-W3
	10	10	6	500	21	15	15	14	31	29	30	19	19	14	14	4,13	FI-T-10/10/06L-W3
	10	12	10	400	24	17	17	17	31	31	32	19	22	19	17	5,81	FI-T-10/12/10L-W3
	10	15	10	400	28	21	21	21	36	36	36	19	27	19	19	10,05	FI-T-10/15/10L-W3
	12	6	12	400	24	17	17	17	32	32	32	22	14	22	17	5,66	FI-T-12/06/12L-W3
	12	8	8	400	24	17	17	17	32	32	32	22	17	17	17	5,69	FI-T-12/08/08L-W3
	12	8	12	400	24	17	17	17	32	32	32	22	17	22	17	5,68	FI-T-12/08/12L-W3
	12	10	10	400	24	17	17	17	32	32	32	22	19	19	17	6,62	FI-T-12/10/10L-W3
	12	10	12	400	24	17	17	17	32	32	32	22	19	22	17	5,58	FI-T-12/10/12L-W3
	12	12	8	400	24	17	17	17	33	31	32	22	22	17	17	5,65	FI-T-12/12/08L-W3
	12	12	10	400	24	17	17	17	32	32	32	22	22	19	17	5,49	FI-T-12/12/10L-W3
	12	15	12	400	28	21	21	21	36	36	36	22	27	22	19	9,73	FI-T-12/15/12L-W3
	12	18	12	400	31	23,5	24	24	40	39	39	22	32	22	24	14,87	FI-T-12/18/12L-W3
	15	6	15	400	28	21	21	21	36	36	36	27	14	27	19	10,06	FI-T-15/06/15L-W3
	15	8	15	400	28	21	21	21	36	36	35	27	17	27	19	8,92	FI-T-15/08/15L-W3
	15	10	10	400	28	21	21	21	36	36	36	27	19	19	19	9,59	FI-T-15/10/10L-W3
	15	10	15	400	28	21	21	21	36	36	36	27	19	27	19	9,82	FI-T-15/10/15L-W3
	15	12	12	400	28	21	21	21	37	36	36	27	22	22	19	9,41	FI-T-15/12/12L-W3
	15	12	15	400	28	21	21	21	36	36	36	27	22	27	19	9,70	FI-T-15/12/15L-W3
	15	15	10	400	28	21	21	21	36	36	36	27	27	19	19	9,68	FI-T-15/15/10L-W3
	15	15	12	400	28	21	21	21	36	36	36	27	27	22	19	9,52	FI-T-15/15/12L-W3
	15	18	15	400	31	23,5	24	24	40	39	39	27	32	27	24	15,22	FI-T-15/18/15L-W3
	15	22	15	250	35	27,5	28	28	36	36	36	27	36	27	27	22,3	FI-T-15/22/15L-W3

¹ Approximate dimension in assembled condition.

² Weight excluding cutting rings and union nuts.

³ Standard scope of delivery: Fitting body only.

Ordering Codes

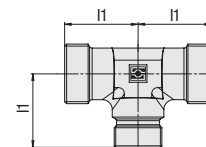
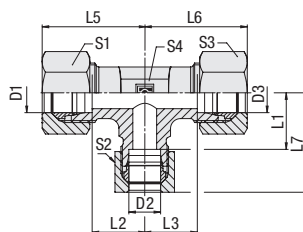
***FI-T*-10/*08/*10*L*-W3*-MS**

- * Tee Reducer FI-T
- * Outside Tube Diameter D1 (in mm) -10
- * Outside Tube Diameter D2 (in mm) 08
- * Outside Tube Diameter D3 (in mm) 10
- * Series L
Light Series (page 101/102)
- S
Heavy Series (page 103)
- * Material Code -W3
Steel, zinc/nickel-plated
- Please contact STAUFF for alternative materials and surface finishings.
- * Assembling / Kitting -
Fitting body only
- Fitting body supplied with cutting rings and union nuts -MS
- Fitting body supplied with soft-sealing cutting rings and union nuts -MSV

Connecting Parts

-  Cutting Ring
Type **FI-DS** Page 28
-  Soft-Sealing Cutting Ring
Type **FI-WDDS** Page 29
-  Support Sleeve
Type **FI-VH** Page 31
-  STAUFF Form EVO Sealing Ring
Type **FI-FD** Page 32
-  Union Nut
Type **FI-M** Page 33
-  37° Flared Tube Fitting Set
Type **FI-AB** Page 37

Tee Reducer
Type FI-T ▪ Series L



Sequence of connections
in the ordering codes for
tee reducers:



Ordering Codes

***FI-T*-10/*08/*10*L*-W3*-MS**

- * Tee Reducer **FI-T**
- * Outside Tube Diameter D1 (in mm) **-10**
- * Outside Tube Diameter D2 (in mm) **08**
- * Outside Tube Diameter D3 (in mm) **10**
- * Series **L**
Light Series (page 101/102)
S
Heavy Series (page 103)
- * Material Code **-W3**
Steel, zinc/nickel-plated
- Please contact STAUFF for alternative materials and surface finishings.
- * Assembling / Kitting **—**
Fitting body only
- Fitting body supplied with cutting rings and union nuts **-MS**
- Fitting body supplied with soft-sealing cutting rings and union nuts **-MSV**

Connecting Parts

- Cutting Ring
Type **FI-DS** Page 28
- Soft-Sealing Cutting Ring
Type **FI-WDDS** Page 29
- Support Sleeve
Type **FI-VH** Page 31
- STAUFF Form EVO Sealing Ring
Type **FI-FD** Page 32
- Union Nut
Type **FI-M** Page 33
- 37° Flared Tube Fitting Set
Type **FI-AB** Page 37

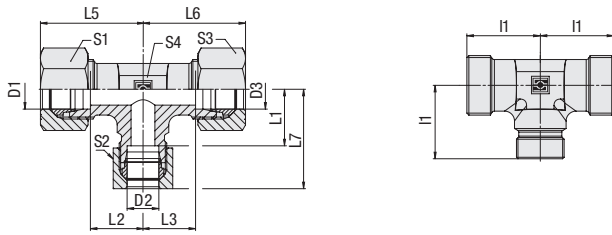
Bes	Tube OD mm			PN bar	Dimensions mm											Weight kg ca. per 100	Ordering Codes ³
	D1	D2	D3		I1	L1	L2	L3	L5 ¹	L6 ¹	L7 ¹	S1	S2	S3	S4		
L	18	8	18	400	31	24	23,5	23,5	40	40	39	32	17	32	24	14,80	FI-T-18/08/18L-W3
	18	10	10	400	31	24	23,5	24	40	39	39	32	19	19	24	14,88	FI-T-18/10/10L-W3
	18	10	18	400	31	24	23,5	23,5	39	40	40	32	19	32	24	14,52	FI-T-18/10/18L-W3
	18	12	12	400	31	24	23,5	24	40	39	40	32	22	22	24	14,43	FI-T-18/12/12L-W3
	18	12	18	400	31	24	23,5	23,5	39	40	40	32	22	32	24	14,76	FI-T-18/12/18L-W3
	18	15	15	400	31	24	23,5	24	40	40	40	32	27	27	24	14,36	FI-T-18/15/15L-W3
	18	15	18	400	31	24	23,5	23,5	39	40	40	32	27	32	24	14,62	FI-T-18/15/18L-W3
	18	18	10	400	31	23,5	23,5	24	40	39	40	32	32	19	24	14,31	FI-T-18/18/10L-W3
	18	18	12	400	31	23,5	23,5	24	40	39	40	32	32	22	24	14,53	FI-T-18/18/12L-W3
	18	22	18	250	35	27,5	27,5	27,5	43,5	43,5	41	32	36	32	27	21,60	FI-T-18/22/18L-W3
	22	10	22	250	35	28	27,5	27,5	43	44	44	36	19	36	27	19,89	FI-T-22/10/22L-W3
	22	12	22	250	35	28	27,5	27,5	43	44	44	36	22	36	27	20,30	FI-T-22/12/22L-W3
	22	15	15	250	35	28	27,5	28	44,5	42,5	43	36	27	27	27	21,11	FI-T-22/15/15L-W3
	22	15	22	250	35	28	27,5	27,5	43	44	44	36	27	36	27	20,19	FI-T-22/15/22L-W3
	22	18	18	250	35	27,5	27,5	27,5	44,5	43,5	44	36	32	32	27	20,66	FI-T-22/18/18L-W3
	22	18	22	250	35	27,5	27,5	27,5	44	44	44	36	32	36	27	20,29	FI-T-22/18/22L-W3
	22	28	22	250	38	30,5	30,5	30,5	47,5	47,5	48	36	41	36	36	33,66	FI-T-22/28/22L-W3
	28	10	28	250	38	31	30,5	30,5	46	47	47	41	19	41	36	32,82	FI-T-28/10/28L-W3
	28	12	28	250	38	31	30,5	30,5	46	47	47	41	22	41	36	34,10	FI-T-28/12/28L-W3
	28	15	28	250	38	31	30,5	30,5	46	47	47	41	27	41	36	22,97	FI-T-28/15/28L-W3
	28	18	18	250	38	30,5	30,5	30,5	47,5	46,5	47	41	32	32	36	36,07	FI-T-28/18/18L-W3
	28	18	28	250	38	30,5	30,5	30,5	47	47	47	41	32	41	36	18,70	FI-T-28/18/28L-W3
	28	22	22	250	38	30,5	30,5	30,5	47,5	46,5	47	41	36	36	36	31,88	FI-T-28/22/22L-W3
	28	22	28	250	38	30,5	30,5	30,5	47	47	47	41	36	41	36	31,70	FI-T-28/22/28L-W3
35	18	35	250	45	37,5	34,5	34,5	54	56	56	50	32	50	41	59,68	FI-T-35/18/35L-W3	
35	22	35	250	45	34,5	37,5	34,5	54	56	56	50	36	50	41	55,00	FI-T-35/22/35L-W3	
35	28	35	250	45	37,5	34,5	34,5	54	56	56	50	41	50	41	49,74	FI-T-35/28/35L-W3	
35	42	35	250	51	40	40,5	40,5	63	63	63	60	60	50	50	82	FI-T-35/42/35L-W3	
42	18	42	250	51	43,5	40	40	63	63	60	60	32	60	50	84,4	FI-T-42/18/42L-W3	
42	22	42	250	51	43,5	40	40	60	63	63	60	36	60	50	79,20	FI-T-42/22/42L-W3	
42	28	42	250	51	43,5	40	40	60	63	63	60	41	60	50	77,33	FI-T-42/28/42L-W3	
42	35	42	250	51	40,5	40	40	62	63	63	60	50	60	50	80,30	FI-T-42/35/42L-W3	

¹ Approximate dimension in assembled condition.

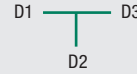
² Weight excluding cutting rings and union nuts.

³ Standard scope of delivery: Fitting body only.

Tee Reducer
Type FI-T ▪ Series S



Sequence of connections
in the ordering codes for
tee reducers:



D

Series	Tube OD mm			PN bar	Dimensions mm														Weight kg ca. per 100	Ordering Codes ³
	D1	D2	D3		I1	L1	L2	L3	L5 ¹	L6 ¹	L7 ¹	S1	S2	S3	S4					
S	12	6	12	630	29	22	21,5	21,5	38,5	38,5	37	24	17	24	17	10,75	FI-T-12/06/12S-W3			
	12	8	12	630	29	22	21,5	21,5	38,5	38,5	37,5	24	19	24	17	10,59	FI-T-12/08/12S-W3			
	12	16	12	630	33	24,5	25,5	25,5	41	41	43	24	30	24	24	18,74	FI-T-12/16/12S-W3			
	16	6	16	630	33	26	24,5	24,5	43	43	41	30	17	30	24	17,85	FI-T-16/06/16S-W3			
	16	8	16	630	33	26	24,5	24,5	41	43	43	30	19	30	24	18,08	FI-T-16/08/16S-W3			
	16	10	16	630	33	25,5	24,5	24,5	42	43	43	30	22	30	24	18,12	FI-T-16/10/16S-W3			
	16	12	12	630	33	25,5	24,5	25,5	43	41	42	30	24	24	24	16,44	FI-T-16/12/12S-W3			
	16	12	16	630	33	25,5	24,5	24,5	42	43	43	30	24	30	24	18,10	FI-T-16/12/16S-W3			
	16	16	10	630	33	24,5	24,5	25,5	43,5	39,5	43,5	30	30	22	24	17,98	FI-T-16/16/10S-W3			
	16	20	16	420	37	26,5	28,5	28,5	47	47	47	30	36	30	27	26,02	FI-T-16/20/16S-W3			
	20	10	20	420	37	29,5	26,5	26,5	46	48	48	36	22	36	27	28,30	FI-T-20/10/20S-W3			
	20	12	20	420	37	29,5	26,5	26,5	48	48	45,5	36	24	36	27	26,42	FI-T-20/12/20S-W3			
	20	16	20	420	37	28,5	26,5	26,5	47	48	48	36	30	36	27	26,21	FI-T-20/16/20S-W3			
	20	25	20	420	42	30	31,5	31,5	52	52	54	36	46	36	36	45,59	FI-T-20/25/20S-W3			
	25	12	25	420	42	34,5	30	30	54	54	51	46	24	46	36	40,90	FI-T-25/12/25S-W3			
	25	16	25	420	42	33,5	30	30	52	54	54	46	30	46	36	45,80	FI-T-25/16/25S-W3			
	25	20	25	420	42	31,5	30	30	53	54	54	46	36	46	36	45,04	FI-T-25/20/25S-W3			
	25	30	25	420	49	35,5	37	37	62	61	61	46	50	46	41	72,40	FI-T-25/30/25S-W3			
	30	20	30	420	49	38,5	35,5	35,5	48	62	62	50	36	50	41	80,00	FI-T-30/20/30S-W3			
	38	20	38	420	57	46,5	41	41	72,5	72,5	68	60	36	60	50	108,90	FI-T-38/20/38S-W3			
38	25	38	420	57	45	41	41	69	72	72	60	46	60	50	134,72	FI-T-38/25/38S-W3				
38	30	38	420	57	41	43,5	41	70	72	72	60	50	60	50	125,00	FI-T-38/30/38S-W3				

¹ Approximate dimension in assembled condition.

² Weight excluding cutting rings and union nuts.

³ Standard scope of delivery: Fitting body only.

Ordering Codes

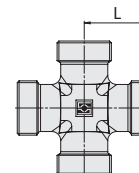
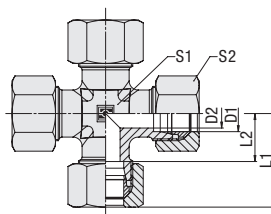
***FI-T*-12/*06/*12*S*-W3*-MS**

- * Tee Reducer FI-T
- * Outside Tube Diameter D1 (in mm) -12
- * Outside Tube Diameter D2 (in mm) 06
- * Outside Tube Diameter D3 (in mm) 12
- * Series L
Light Series (page 101/102)
- S
Heavy Series (page 103)
- * Material Code -W3
Steel, zinc/nickel-plated
- Please contact STAUFF for alternative materials and surface finishings.
- * Assembling / Kitting -
Fitting body only
- MS
Fitting body supplied with cutting rings and union nuts
- MSV
Fitting body supplied with soft-sealing cutting rings and union nuts

Connecting Parts

- Cutting Ring
Type **FI-DS** Page 28
- Soft-Sealing Cutting Ring
Type **FI-WDDS** Page 29
- Support Sleeve
Type **FI-VH** Page 31
- STAUFF Form EVO Sealing Ring
Type **FI-FD** Page 32
- Union Nut
Type **FI-M** Page 33
- 37° Flared Tube Fitting Set
Type **FI-AB** Page 37

Equal Cross
Type FI-K • Series LL / L / S



D

Ordering Codes

***FI-K*-10*L*-W3*-MS**

- * Equal Cross **FI-K**
- * Outside Tube Diameter D1 (in mm) **-10**
- * Series **LL**
 - Extra-Light Series **L**
 - Light Series **S**
 - Heavy Series
- * Material Code **-W3**
 - Steel, zinc/nickel-plated
- Please contact STAUFF for alternative materials and surface finishings.
- * Assembling / Kitting **—**
 - Fitting body only
 - Fitting body supplied with cutting rings and union nuts **-MS**
 - Fitting body supplied with soft-sealing cutting rings and union nuts **-MSV**

Series	Tube OD	PN	Dimensions						Weight	Ordering Codes ³
	mm		mm			kg ca.				
	D1		D2	L	L1 ¹	L2	S1	S2	per 100	
LL	4	100	3	15	21	11	9	10	1,68	FI-K-04LL-W3
	6	100	4,5	15	21	9,5	9	12	1,76	FI-K-06LL-W3
	8	100	6	17	23	11,5	12	14	2,85	FI-K-08LL-W3
L	6	500	4	19	27	12	12	14	3,40	FI-K-06L-W3
	8	500	6	21	29	14	12	17	3,93	FI-K-08L-W3
	10	500	8	22	30	15	14	19	5,01	FI-K-10L-W3
	12	400	10	24	32	17	17	22	6,90	FI-K-12L-W3
	15	400	12	28	36	21	19	27	12,36	FI-K-15L-W3
	18	400	15	31	40	23,5	24	32	17,40	FI-K-18L-W3
	22	250	19	35	44	27,5	27	36	22,60	FI-K-22L-W3
	28	250	24	38	47	30,5	36	41	35,60	FI-K-28L-W3
	35	250	30	45	56	34,5	41	50	54,67	FI-K-35L-W3
	42	250	36	51	63	40	50	60	92,70	FI-K-42L-W3
	S	6	800	4	23	31	16	12	17	5,79
8		800	5	24	32	17	14	19	7,91	FI-K-08S-W3
10		800	7	25	34	17,5	17	22	10,13	FI-K-10S-W3
12		630	8	29	38	21,5	17	24	13,59	FI-K-12S-W3
14		630	10	30	40	22	19	27	16,21	FI-K-14S-W3
16		630	12	33	43	24,5	24	30	22,15	FI-K-16S-W3
20		420	16	37	48	26,5	27	36	31,07	FI-K-20S-W3
25		420	20	42	54	30	36	46	53,00	FI-K-25S-W3
30		420	25	49	62	35,5	41	50	84,30	FI-K-30S-W3
38		420	32	57	72	41	50	60	135,10	FI-K-38S-W3

Connecting Parts

- Cutting Ring
Type **FI-DS** Page 28
- Soft-Sealing Cutting Ring
Type **FI-WDDS** Page 29
- Support Sleeve
Type **FI-VH** Page 31
- STAUFF Form EVO Sealing Ring
Type **FI-FD** Page 32
- Union Nut
Type **FI-M** Page 33
- 37° Flared Tube Fitting Set
Type **FI-AB** Page 37

¹ Approximate dimension in assembled condition.

² Weight excluding cutting rings and union nuts.

³ Standard scope of delivery: Fitting body only.

