



STAUFF Connect

Metric tube connectors, assembly tools
and accessories

Product Catalogue

Version
10/2025





STAUFF Clean
Pipe, Tube and Hose Cleaning System
SC

286



Manual Tube Bender
TUB-MA

288



Tube Bending and Saw Device
TUBSD-MA

289



Tube Saw Device
TUSD-MA

290



Tube Reamer
TUD-MA

291

STAUFF Clean Pipe, Tube and Hose Cleaning System

Product Description

The STAUFF Clean System comprises of a pneumatic launcher and a range of specially designed nozzles and projectiles.

The launcher uses standard industrial compressed air pressure between 6 and 8 bar to propel a foam projectile through the nozzle and into the pipe, tube or hose bore to have their inside surface cleaned from any unwanted contamination.

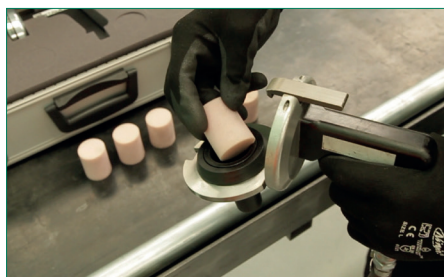
This provides a safe and environmentally friendly tool that requires little formal expertise to operate and apply.

The **launcher** is the part of the system that controls the air supply to propel the projectile from start to finish of the cleaning job.

The **nozzles** are specially designed to affect an airtight seal on any pipe, tube or hose with or without end fittings. Its main purpose is to compress the foam projectile allowing it to enter the internal diameter of the pipe, tube or hose to be cleaned.

The **projectile** is the part of the system that does the cleaning: The foam projectile is sized to be approximately 15% larger than the internal diameter of the pipe, tube or hose to be cleaned. The compression of the projectile against the internal wall cleans the internal surface and expels any loose contaminants from the end of the pipe, tube or hose.

The STAUFF Clean System is available as separate components or in a variety of kit forms comprising various nozzle types, adaptor and launcher, all contained in a heavy duty carrying case.



R

STAUFF Clean Launchers / Launcher Kits



Characteristics

- Pneumatic pistol-grip launcher
- Light-weight and ergonomic design
- Easy to operate and apply
- Connection to air supply with quick release coupling
- Suitable for any type of nozzle
- Delivered separately or in a variety of kit forms including carrying case, adaptor ring and nozzles (if required)

Technical Data

- Air compressor requirement: 6 ... 8 bar
- Effective air volume: 250 ... 400 l/min

Ordering Codes

- Launcher only **SC-LG**
- Launcher kit (launcher, kit and adaptor) **SC-LK**
- Kit (launcher, kit and adaptor) with set of 10 Universal nozzles **SC-10UV-K**
- Kit (launcher, kit and adaptor) with set of 18 Metric Tube nozzles **SC-18MT-K**
- 10 JIC nozzles **SC-10J-K**
- 7 BSP nozzles **SC-7B-K**

Contact STAUFF for alternative connection adaptors and couplings.

**STAUFF Clean
Nozzles / Nozzle Sets**
Universal Nozzle Set (SC-U-SET)

The Universal Nozzle is designed with a tapered seat that will allow it to suit for 90% of applications, including Hose, Tube and Pipe, with or without fittings, in hydraulic and pneumatic pipe systems, condenser tubes, boiler tubes and food lines.

The Universal Nozzle kit fits all and will accommodate applications with JIC, SAE and BSP end fittings.

The set of 10 nozzles consists of the following sizes: 6 mm, 8 mm, 10 mm, 13 mm, 16 mm, 19 mm, 25 mm and 32 mm.

JIC Nozzle Set (SC-J-SET)

The JIC Nozzle is designed specifically for use with JIC and SAE type fittings. The nozzles are machined to accommodate both male and female configuration, ensuring a perfect airtight seal every time.

The set of 10 nozzles consist of the following sizes: 6 mm, 8 mm, 10 mm, 13 mm, 16 mm, 19 mm, 25 mm, 32 mm, 38 mm and 50 mm.

Metric Tube Nozzle Set (SC-M-SET)

The Metric Tube Nozzle is intended for use specifically with Metric sized tube and is designed to fit over the outside of the tube or pipe being cleaned.

The inside diameter of the nozzle is reduced to match the inside diameter of the tube. The nozzles are machined from solid bar stock and designed for superior strength.

The set of 18 nozzles consist of the following sizes: 6 mm, 8 mm, 10 mm, 12 mm, 14 mm, 15 mm, 16 mm, 18 mm, 20 mm, 22 mm, 25 mm, 28 mm, 30 mm, 35 mm, 38 mm, 42 mm, 50 mm and 60 mm.

BSP Nozzle Set (SC-B-SET)

The BSP Nozzle is designed specifically for BSP configuration fittings. The nozzles are machined to accommodate both male and female configurations, ensuring a perfect airtight seal every time.

The set of 7 nozzles consist of the following sizes: 6 mm, 10 mm, 13 mm, 16 mm, 19 mm, 25 mm and 32 mm.



Adaptor Ring for Nozzels (SCN-AR)
Required for sizes 6-32 mm / 1/4-1 1/4 in

If required, nozzles can be supplied separately. Contact STAUFF for details.

**STAUFF Clean
Projectiles**
**Standard Projektiles
Type SCP-S**

Intended for the cleaning of hose, tube or pipe without end fittings or restrictions.


**Abrasive Projektiles
Type SCP-A**

Intended for the internal cleaning of metal pipe and tube to remove light contaminants (rust and scale).


**Coupling Projektiles
Type SCP-C**

Intended for the cleaning of hose assemblies or the removal of loose contamination from pipe, tube or hose.


**Grinding Projektiles
Type SCP-G**

Intended for the internal cleaning of metal pipe and tube to remove medium and heavy contamination (rust and scale).



Size	Pipe / Tube / Hose ID		Ordering Codes			
	(mm)	(in)	Coupling Series (SCP-S)	Coupling Series (SCP-C)	Coupling Series (SCP-A)	Coupling Series (SCP-G)
07	4,8	3/16	SCP-S-07	SCP-C-07	SCP-A-07	SCP-G-07
10	6,4	1/4	SCP-S-10	SCP-C-10	SCP-A-10	SCP-G-10
12	7,9	5/16	SCP-S-12	SCP-C-12	SCP-A-12	SCP-G-12
14	9,5	3/8	SCP-S-14	SCP-C-14	SCP-A-14	SCP-G-14
16	11,1	7/16	SCP-S-16	SCP-C-16	SCP-A-16	SCP-G-16
18	12,7	1/2	SCP-S-18	SCP-C-18	SCP-A-18	SCP-G-18
20	14,3	9/16	SCP-S-20	SCP-C-20	SCP-A-20	SCP-G-20
22	15,9	5/8	SCP-S-22	SCP-C-22	SCP-A-22	SCP-G-22
26	19,1	3/4	SCP-S-26	SCP-C-26	SCP-A-26	SCP-G-26
28	20,6	13/16	SCP-S-28	SCP-C-28	SCP-A-28	SCP-G-28
30	22,2	7/8	SCP-S-30	SCP-C-30	SCP-A-30	SCP-G-30
33	25,4	1	SCP-S-33	SCP-C-33	SCP-A-33	SCP-G-33
36	26 / 27	1 1/16	SCP-S-36	SCP-C-36	SCP-A-36	SCP-G-36
40	31,8	1 1/4	SCP-S-40	SCP-C-40	SCP-A-40	SCP-G-40
45	34,9	1 3/8	SCP-S-45	SCP-C-45	SCP-A-45	SCP-G-45
50	38,1	1 1/2	SCP-S-50	SCP-C-50	SCP-A-50	SCP-G-50
55	44,5	1 3/4	SCP-S-55	SCP-C-55	SCP-A-55	SCP-G-55
60	50,8	2	SCP-S-60	SCP-C-60	SCP-A-60	SCP-G-60
80			SCP-S-80	SCP-C-80	SCP-A-80	SCP-G-80

Please note: For optimum cleaning, it is recommended that projectiles are used once and then discarded and disposed of in an appropriate way.

Safety note: A mesh collection bag should be secured to the pipe, tube or hose exit to avoid possible injury to personnel by the projectile exiting at high velocity.

Always wear protective safety glasses, ear protection and a dust mask when operating this system.

R

Manual Tube Bender Typ TUB-MA

Product Description

When used with a commercially available vice, STAUFF manual tube benders, type TUB-MA, enable common hydraulic tubes to be bent manually.

They are suitable for steel and stainless steel tubes with diameters of 6, 8, 10, 12, 14, 15, 16, 18 and 22 mm with a defined minimum wall thickness.

In addition to the metric version, a model for handling inch-gauge tubes with diameters of between 1/4 and 7/8 inches is also available.

The eight bending rollers – six in the imperial version – ensure maximum wear.

A scale lasered onto the bending rollers enhances the accuracy of the required bending angle with superior precision.

The manual tube bender is supplied with all the necessary components and multilingual instructions for use as a complete kit in a high-quality steel case.

Product Features

- Small bending radii allow for compact assemblies
- Optimised bending contour, which enables tube bends free of flattening and constriction
- hard wearing steel bending rolls
- ideal for versatile site use, possibly for installation work on site

Technical Data

- Dimensions (W x D x H):
640 mm x 165 mm x 70 mm
- Weight (incl. Case):
Metric Version 13,8 kg
Imperial Version 12,1 kg



Ordering Codes

- Manual Tube Bender Set in Steelcase (metric Version) **TUB-MA-M622-LV-KIT**
- Manual Tube Bender Set in Steelcase (imperial Version) **TUB-MA-I4140D-LV-KIT**

Spare Parts / Accessories

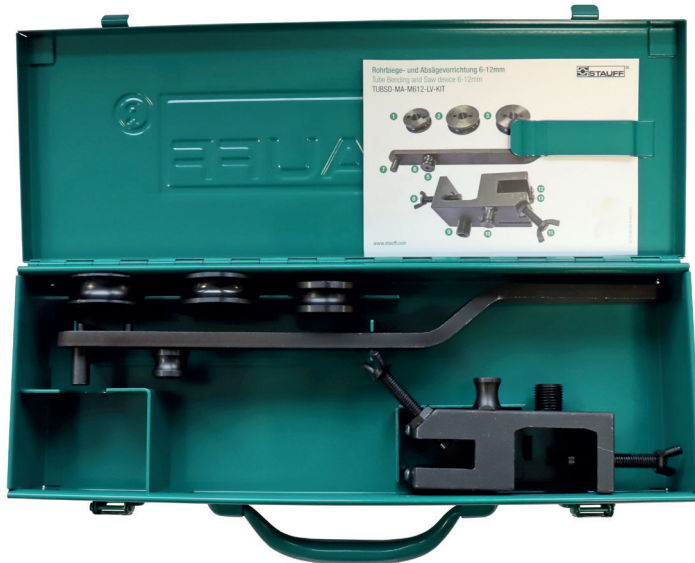
Description	Ordering Codes
Bending Lever	TUB-MA-S-Bending-Lever
Baseplate	TUB-MA-S-Baseplate
Guide Roller	TUB-MA-S-Guide-Roller-W32
Hold Roll	TUB-MA-S-Hold-Roll-W101
Guide Roller Mount	TUB-MA-S-Guide-Roller-Mount
Bolt	TUB-MA-S-Bolt-M12x32
Pivot Pin	TUB-MA-S-Pivot-Pin
Bending Lever Support	TUB-MA-S-Bending-Lever-Support-W32
Bending Roller 6/8 mm	TUB-T-BE-M6/8-MIOD-W32
Bending Roller 10 mm	TUB-T-BE-M10-MIOD-W32
Bending Roller 12 mm	TUB-T-BE-M12-M622-W32
Bending Roller 14/15 mm	TUB-T-BE-M14/15-M622-W32
Bending Roller 16 mm	TUB-T-BE-M16-MIOD-W32
Bending Roller 18 mm	TUB-T-BE-M18-M622-W101
Bending Roller 20 mm	TUB-T-BE-M20-M622-W101
Bending Roller 22 mm	TUB-T-BE-M22-MIOD-W101
Bending Roller 1/2"	TUB-T-BE-080D-I4140D-W32
Bending Roller 3/4"	TUB-T-BE-120D-I4140D-W101

Parts assignment: www.stauff.com/en/category/025000/025022/025025/025021B



Outer Diameter	Metric	Inch	Radius	Minimum Wall Thickness
6/8 mm (1/4" / 5/16")	•	•	33 mm / 1.30 in	1,5 mm / .06 in
10 mm (3/8")	•			1,5 mm / .06 in
12 mm	•			
1/2"		•	40 mm / 1.57 in	2,0 mm / .08 in
14 mm	•			1,5 mm / .06 in
15 mm	•			
16 mm (5/8")	•	•	48 mm / 1.89 in	1,5 mm / .06 in
18 mm	•			2,0 mm / .08 in
3/4"		•		
20 mm	•			
22 mm (7/8")	•	•		

Tube Bending and Saw Device Type TUBSD-MA



Product Description

This sturdy steel case is designed for short-term use on the go, providing all components required for bending and sawing off hydraulic tubes made of steel or stainless steel. The case contains a combined manual tube bending and sawing device which can be attached with a standard vice or directly to a work-bench top with a thickness of up to 35 mm. The contour of the holding fixture ensures that cuts are made at a 90° angle.

Three low-wear bending rollers made of steel allow processing of steel or stainless steel tubes with an outer diameter of 6, 8, 10 or 12 mm. The optimised bending contour of the rollers prevents deformation of the tube even for smaller bending radii. A bending lever is also included in the set.

A standard hacksaw is used for sawing off the tube.

The case also has space for the STAUFF universal internal and external tube reamer for tube diameters from 6 to 35 mm. The reamer is not included in the set, but can be purchased separately, as can all components of this convenient repair set in a robust steel case.

Ordering Code

▪ Tube Bending and Saw Device in Steelcase

TUBSD-MA-M612-LV-KIT

Spare Parts / Accessories

Description	Ordering Codes
Bending roll 6/8mm (Radius 19/20mm)	TUBSD-T-BE-M6/8-W101
Bending roll 10mm (Radius 25mm)	TUBSD-T-BE-M10-W101
Bending roll 12mm (Radius 26mm)	TUBSD-T-BE-M12-W101
Bending-Lever-compl	TUBSD-S-Bending-Lever-compl-W101
Baseplate-compl	TUBSD-S-Baseplate-compl-W101
Hold-Roll	TUBSD-S-Hold-Roll-W101
Bending-Roll-Mount	TUBSD-S-Bending-Roll-Mount-W101
Round-Head-Rivet Kit 4 pcs.	Kit-TUBSD-S-Round-Head-Rivet-W5
SAW-Guide Kit 2 pcs.	Kit-TUBSD-S-SAW-Guide-W101
Pivot-Pin	TUBSD-S-Pivot-Pin-W101
Guide-Roller-Mount	TUBSD-S-Guide-Roller-Mount-W101
Guide-Roller	TUBSD-S-Guide-Roller-W101
Butterfly lock bolt	TUBSD-S-Butterfly lock bolt W101

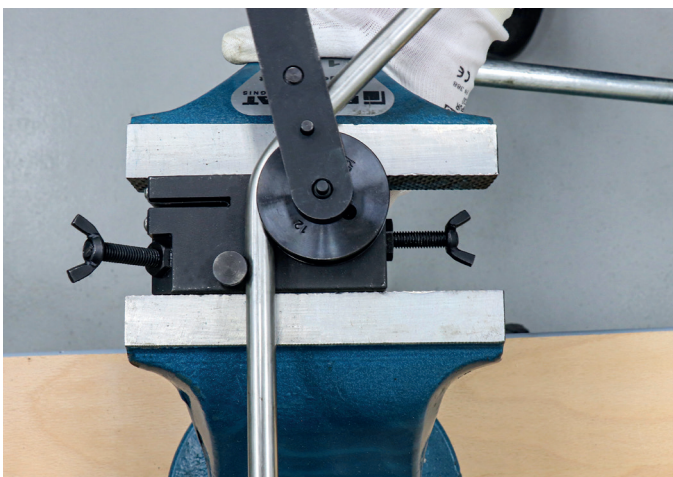
Parts assignment: www.stauff.com/en/category/025000/025022/025026/025022D

Product Features

- Bending and sawing with one device
- Wear-resistant steel bending rollers
- Small bending radii for compact installations
- Optimised bending contour: The tube diameter is not deformed during the bending process
- Saw blade guiding ensures 90° cuts
- Can be used with or without a vice
- Ideal for flexible mobile use, e.g. for installation work at a construction site

Technical Data

- Dimensions (W x D x H):
355 mm x 125 mm x 56 mm
- Weight (incl. Case): 3,4kg



Tube Saw Devise Type TUSD-MA

Product Description

This device can be used to cut steel and stainless steel tubes with an outer diameter between 6 and 42 mm at a precise 90° angle. It can either be used with a vice or simply clamped onto the tube for cutting.

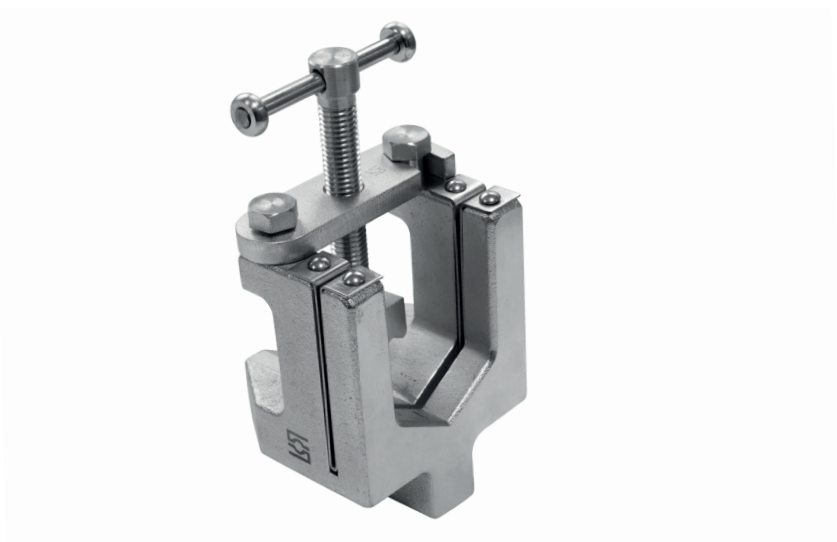
A standard hacksaw is used for sawing off the tube.

Product Features

- 90° cut on tubes up to 42 mm
- Tube diameter is not deformed during the clamping process
- Robust, durable design
- No vice required, device can also simply be clamped onto the tube
- The saw blade guide can easily be replaced separately when it is worn
- Ideal for flexible mobile use, e.g. for installation work at a construction site

Technical Data

- Dimensions (W x D x H):
80 mm x 70 mm x 140 mm
- Weight: 1,6 kg



Ordering Code

- Tube Saw Devise

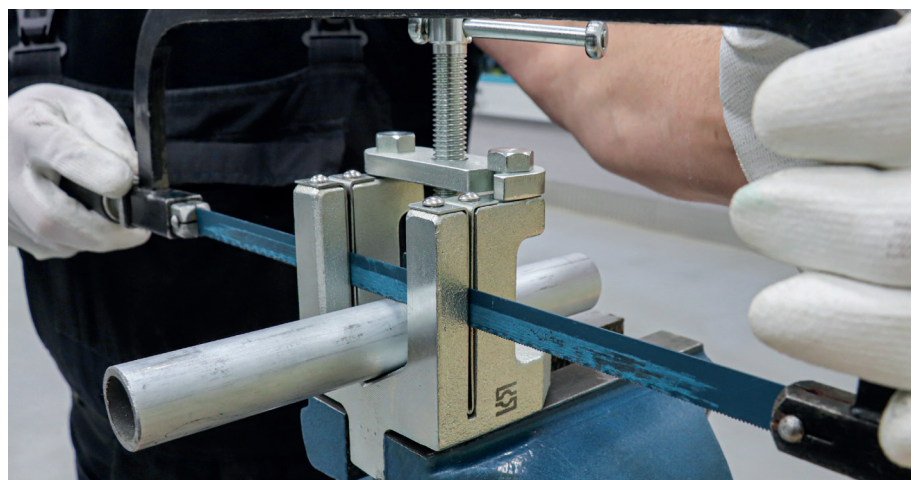
TUSD-MA-M642

Spare Parts / Accessories

Description	Ordering Codes
Round-Head-Rivet Kit 4 pcs.	Kit-SD-MA-S-Round-Head-Rivet-W5
SAW-Guide Kit 2 pcs.	Kit-SD-MA-S-Saw-Guide-W101
Barcked Bolt Kit 2 pcs.	Kit-SD-MA-S-Bolt-W32
Bracked-compl.	SD-MA-S-Bracked-compl.-W32

Parts assignment: www.stauff.com/en/category/025000/025022/025027/025022E

R



Tube Reamer Type TUD-MA

Product Description

The STAUFF universal internal and external tube reamer for tube diameters from 6 to 35 mm features high-quality sharpened cutting edges made of hardened special steel and ensures a flowing, "chatter-free" work process. Also available for tubes with an outer diameter from 10 to 54 mm.

Particularly convenient: An adapter for using the device with an electric drill at low speed is available for both sizes.

Product Features

- Easy and quick burr removal on steel and stainless steel tubes
- High-quality sharpened cutting edges made of hardened special steel
- Chatter-free working

Technical Data

- Dimensions TUD-MA-0635 (Ø x H): 48 mm x 60 mm
- Weight: 0,2 kg

- Dimensions TUD-MA-1054 (Ø x H): 70 mm x 90 mm
- Weight: 0,6 kg

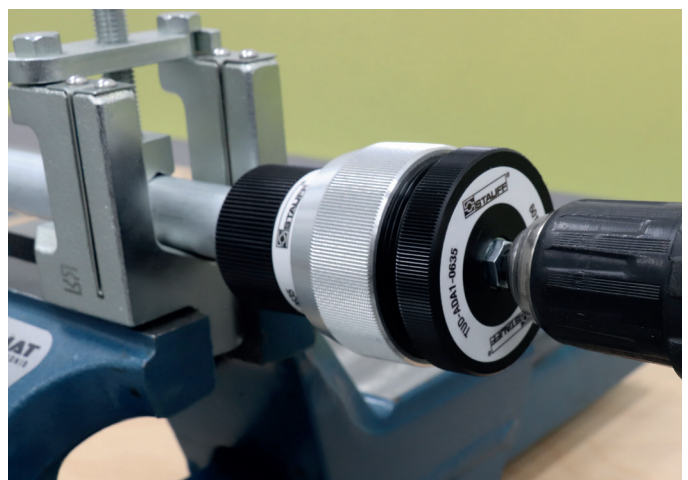
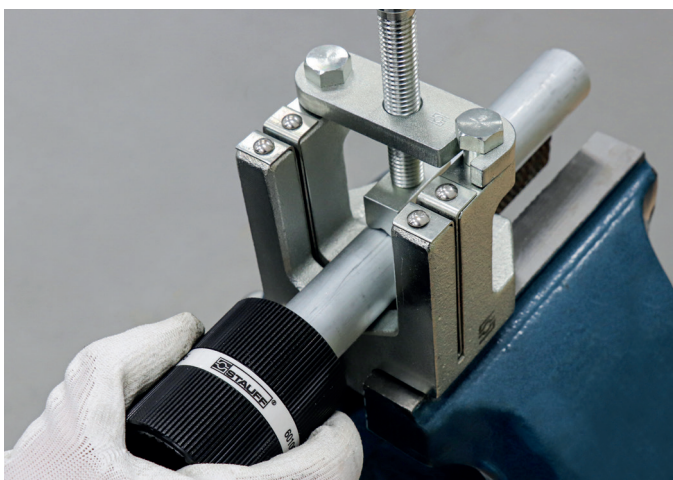
- Dimensions TUD-ADA1-0635 (Ø x H): 65 mm x 85 mm inkl. Welle
- Weight: 0,2 kg

- Dimensions TUD-ADA2-1054 (Ø x H): 91 mm x 92 mm inkl. Welle
- Weight: 0,4 kg

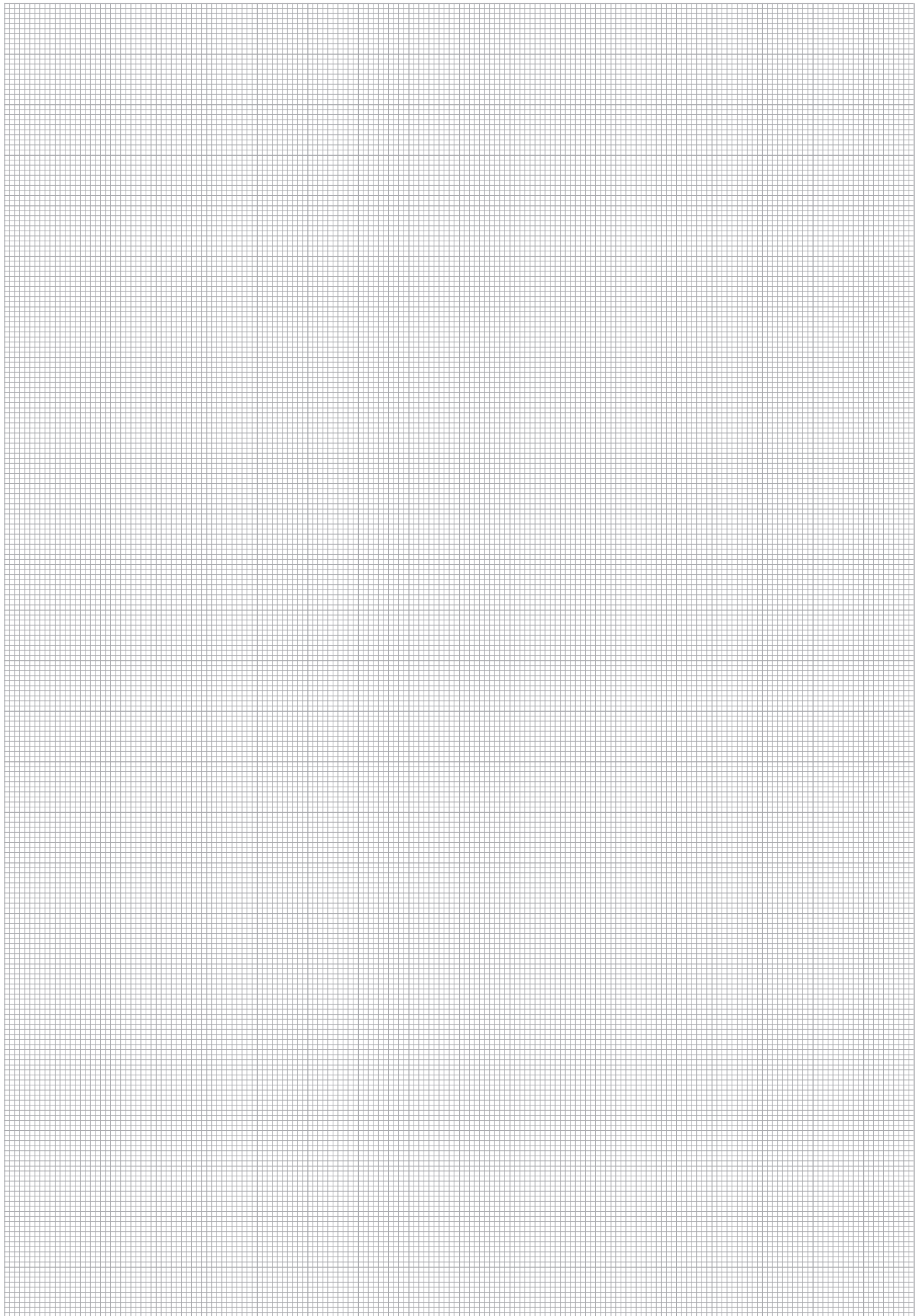


Ordering Codes

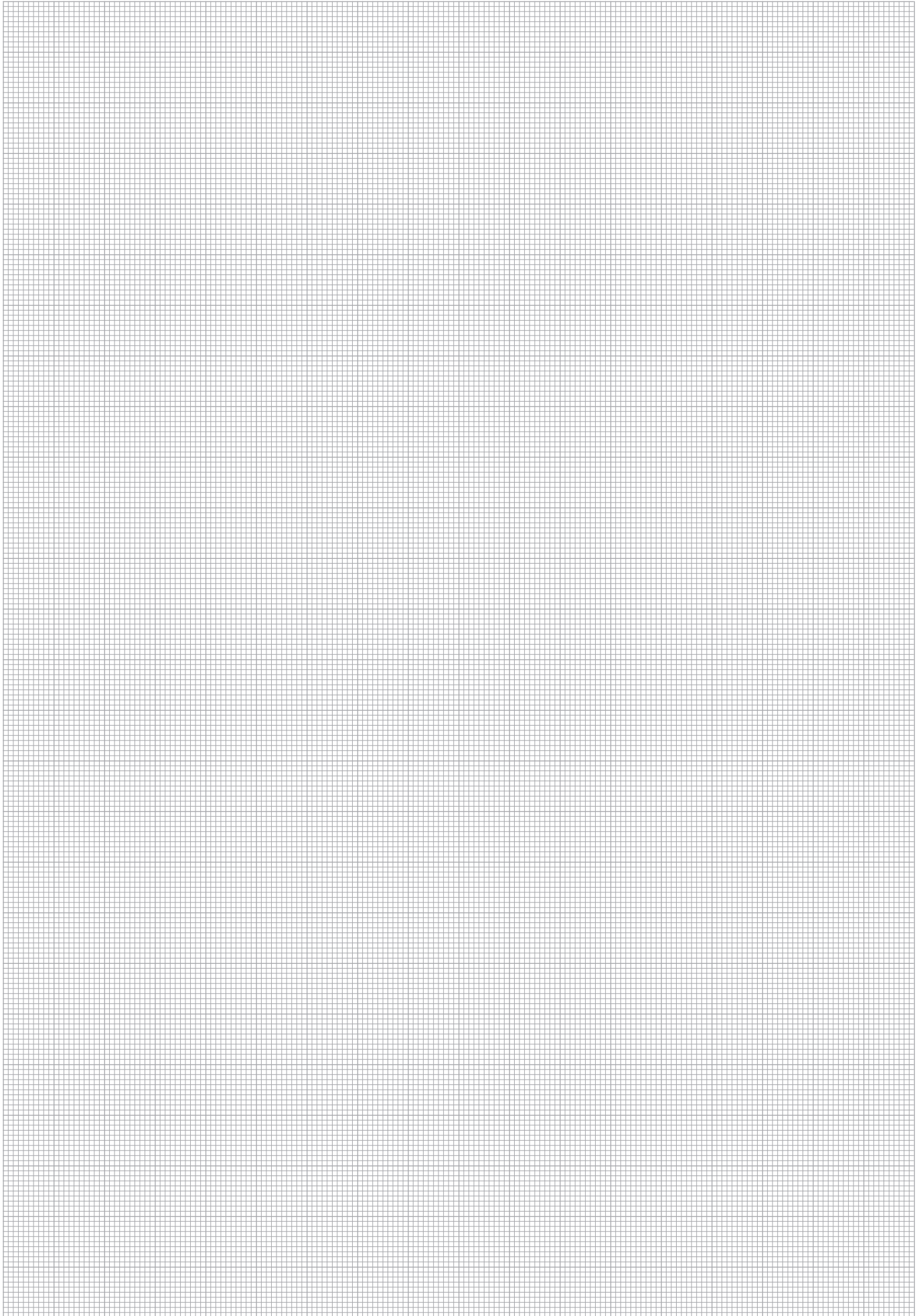
Description	Ordering Codes
Tube reamer 6-35mm	TUD-MA-0635
Adapter for Tube reamer 6-35mm	TUD-ADA1-0635
Tube reamer 10-54mm	TUD-MA-1054
Adapter for Tube reamer 10-54mm	TUD-ADA2-1054



R



R



R